



# wwPDB X-ray Structure Validation Summary Report ⓘ

Jun 17, 2024 – 12:06 PM EDT

PDB ID : 3UTP  
Title : 1E6 TCR specific for HLA-A\*0201-ALWGPDPAAA  
Authors : Rizkallah, P.J.; Cole, D.K.; Sewell, A.K.; Bulek, A.M.  
Deposited on : 2011-11-26  
Resolution : 2.57 Å(reported)

This is a wwPDB X-ray Structure Validation Summary Report for a publicly released PDB entry.

We welcome your comments at [validation@mail.wwpdb.org](mailto:validation@mail.wwpdb.org)

A user guide is available at

<https://www.wwpdb.org/validation/2017/XrayValidationReportHelp>

with specific help available everywhere you see the ⓘ symbol.

The types of validation reports are described at

<http://www.wwpdb.org/validation/2017/FAQs#types>.

---

The following versions of software and data (see [references ⓘ](#)) were used in the production of this report:

MolProbity : 4.02b-467  
Mogul : 2022.3.0, CSD as543be (2022)  
Xtriage (Phenix) : 1.20.1  
EDS : 2.37.1  
Percentile statistics : 20191225.v01 (using entries in the PDB archive December 25th 2019)  
Refmac : 5.8.0158  
CCP4 : 7.0.044 (Gargrove)  
Ideal geometry (proteins) : Engh & Huber (2001)  
Ideal geometry (DNA, RNA) : Parkinson et al. (1996)  
Validation Pipeline (wwPDB-VP) : 2.37.1

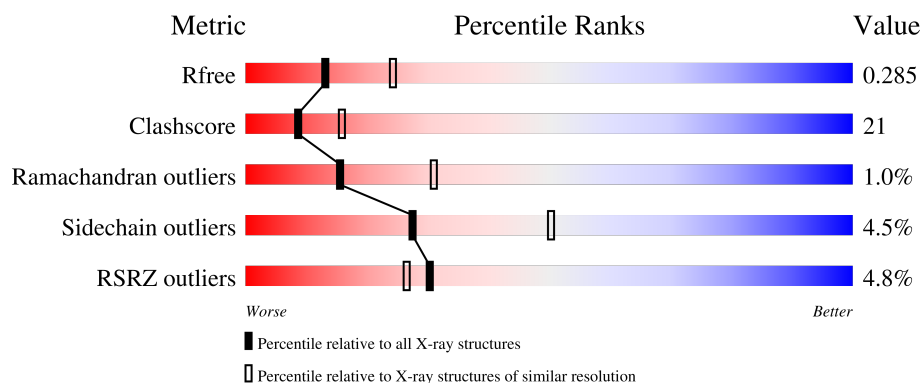
# 1 Overall quality at a glance

The following experimental techniques were used to determine the structure:

*X-RAY DIFFRACTION*

The reported resolution of this entry is 2.57 Å.

Percentile scores (ranging between 0-100) for global validation metrics of the entry are shown in the following graphic. The table shows the number of entries on which the scores are based.



Metric	Whole archive (#Entries)	Similar resolution (#Entries, resolution range(Å))
$R_{free}$	130704	3676 (2.60-2.56)
Clashscore	141614	4049 (2.60-2.56)
Ramachandran outliers	138981	3979 (2.60-2.56)
Sidechain outliers	138945	3979 (2.60-2.56)
RSRZ outliers	127900	3614 (2.60-2.56)

The table below summarises the geometric issues observed across the polymeric chains and their fit to the electron density. The red, orange, yellow and green segments of the lower bar indicate the fraction of residues that contain outliers for  $\geq 3$ , 2, 1 and 0 types of geometric quality criteria respectively. A grey segment represents the fraction of residues that are not modelled. The numeric value for each fraction is indicated below the corresponding segment, with a dot representing fractions  $\leq 5\%$ . The upper red bar (where present) indicates the fraction of residues that have poor fit to the electron density. The numeric value is given above the bar.

Mol	Chain	Length	Quality of chain
1	D	201	
1	K	201	
2	E	246	
2	L	246	

The following table lists non-polymeric compounds, carbohydrate monomers and non-standard

residues in protein, DNA, RNA chains that are outliers for geometric or electron-density-fit criteria:

Mol	Type	Chain	Res	Chirality	Geometry	Clashes	Electron density
4	SO4	D	204	-	-	-	X
4	SO4	E	248	-	-	X	-

## 2 Entry composition [i](#)

There are 6 unique types of molecules in this entry. The entry contains 7261 atoms, of which 0 are hydrogens and 0 are deuteriums.

In the tables below, the ZeroOcc column contains the number of atoms modelled with zero occupancy, the AltConf column contains the number of residues with at least one atom in alternate conformation and the Trace column contains the number of residues modelled with at most 2 atoms.

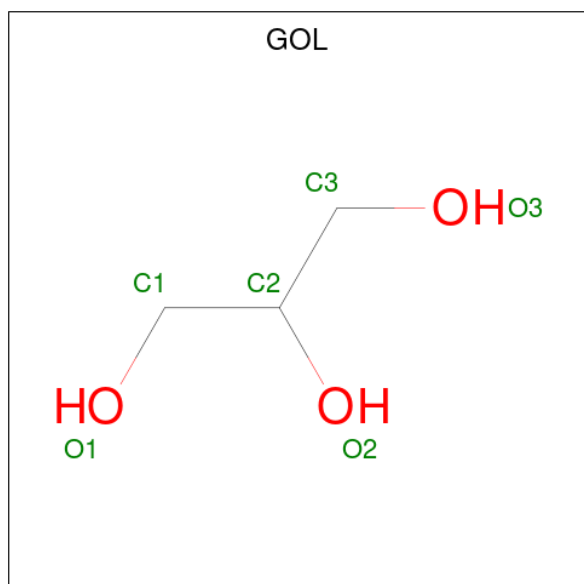
- Molecule 1 is a protein called 1E6 TCR alpha chain.

Mol	Chain	Residues	Atoms					ZeroOcc	AltConf	Trace
1	D	199	Total	C	N	O	S	0	0	0
			1573	986	259	318	10			
1	K	201	Total	C	N	O	S	0	0	0
			1586	994	261	321	10			

- Molecule 2 is a protein called 1E6 TCR beta chain.

Mol	Chain	Residues	Atoms					ZeroOcc	AltConf	Trace
2	E	246	Total	C	N	O	S	0	0	0
			1974	1249	341	374	10			
2	L	246	Total	C	N	O	S	0	0	0
			1974	1249	341	374	10			

- Molecule 3 is GLYCEROL (three-letter code: GOL) (formula:  $C_3H_8O_3$ ).



Mol	Chain	Residues	Atoms			ZeroOcc	AltConf
3	D	1	Total	C	O	0	0
			6	3	3		
3	K	1	Total	C	O	0	0
			6	3	3		

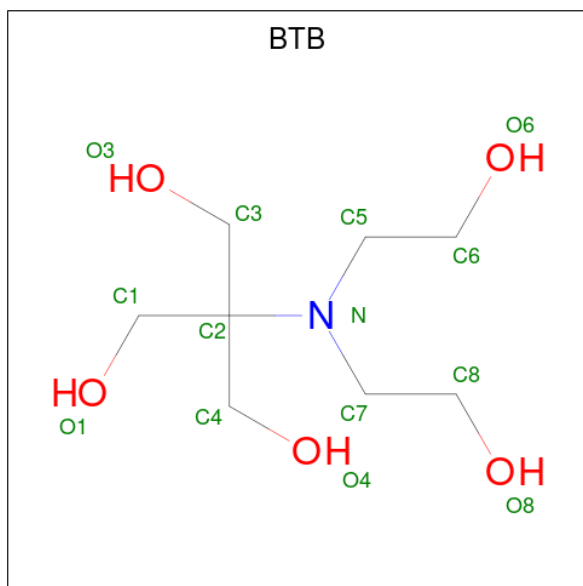
- Molecule 4 is SULFATE ION (three-letter code: SO4) (formula: O<sub>4</sub>S).



Mol	Chain	Residues	Atoms			ZeroOcc	AltConf
4	D	1	Total	O	S	0	0
			5	4	1		
4	D	1	Total	O	S	0	0
			5	4	1		
4	E	1	Total	O	S	0	0
			5	4	1		
4	E	1	Total	O	S	0	0
			5	4	1		
4	E	1	Total	O	S	0	0
			5	4	1		
4	K	1	Total	O	S	0	0
			5	4	1		
4	K	1	Total	O	S	0	0
			5	4	1		
4	L	1	Total	O	S	0	0
			5	4	1		
4	L	1	Total	O	S	0	0
			5	4	1		

- Molecule 5 is 2-[BIS-(2-HYDROXY-ETHYL)-AMINO]-2-HYDROXYMETHYL-PROPAN

E-1,3-DIOL (three-letter code: BTB) (formula:  $C_8H_{19}NO_5$ ).



Mol	Chain	Residues	Atoms				ZeroOcc	AltConf
5	E	1	Total	C	N	O	0	0
			14	8	1	5		

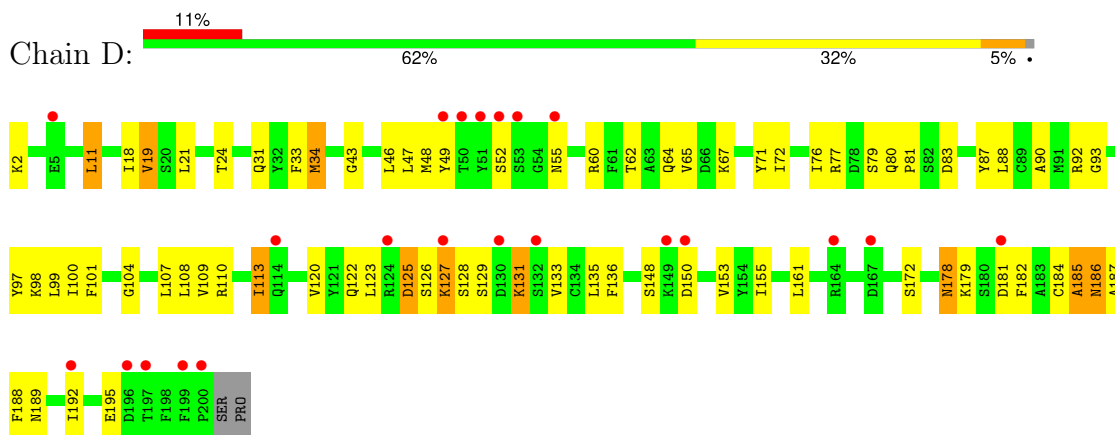
- Molecule 6 is water.

Mol	Chain	Residues	Atoms		ZeroOcc	AltConf
6	D	20	Total	O	0	0
			20	20		
6	E	22	Total	O	0	0
			22	22		
6	K	21	Total	O	0	0
			21	21		
6	L	20	Total	O	0	0
			20	20		

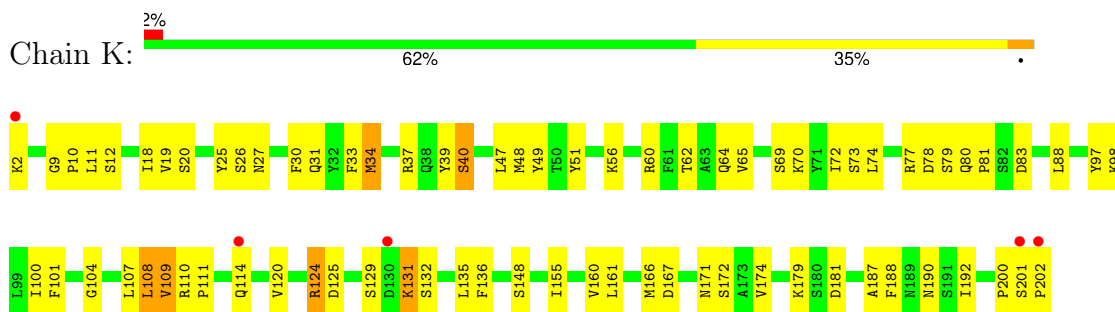
### 3 Residue-property plots [i](#)

These plots are drawn for all protein, RNA, DNA and oligosaccharide chains in the entry. The first graphic for a chain summarises the proportions of the various outlier classes displayed in the second graphic. The second graphic shows the sequence view annotated by issues in geometry and electron density. Residues are color-coded according to the number of geometric quality criteria for which they contain at least one outlier: green = 0, yellow = 1, orange = 2 and red = 3 or more. A red dot above a residue indicates a poor fit to the electron density ( $RSRZ > 2$ ). Stretches of 2 or more consecutive residues without any outlier are shown as a green connector. Residues present in the sample, but not in the model, are shown in grey.

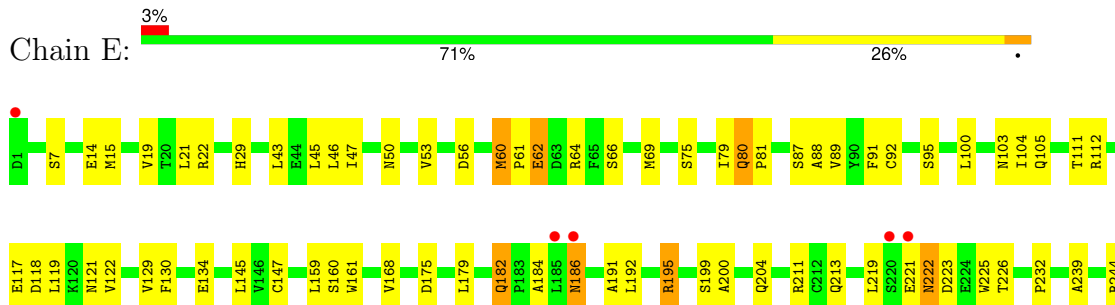
- Molecule 1: 1E6 TCR alpha chain



- Molecule 1: 1E6 TCR alpha chain

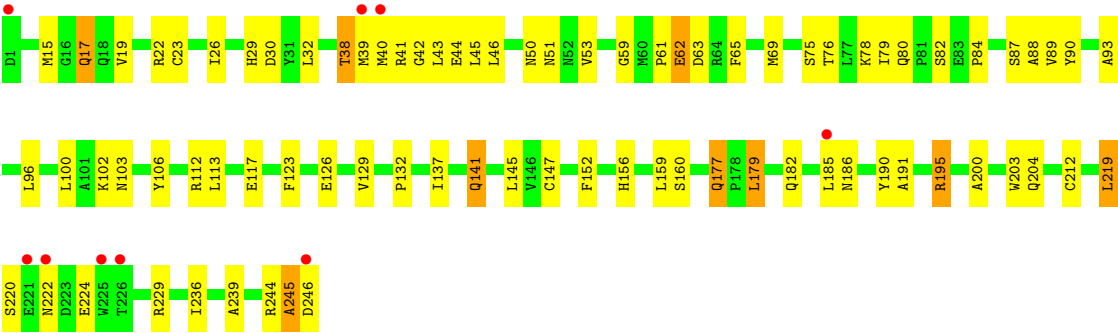


- Molecule 2: 1E6 TCR beta chain





● Molecule 2: 1E6 TCR beta chain





## 4 Data and refinement statistics

Property	Value	Source
Space group	C 1 2 1	Depositor
Cell constants a, b, c, $\alpha$ , $\beta$ , $\gamma$	192.03Å 43.26Å 124.71Å 90.00° 101.25° 90.00°	Depositor
Resolution (Å)	30.58 – 2.57 30.58 – 2.57	Depositor EDS
% Data completeness (in resolution range)	100.0 (30.58-2.57) 99.5 (30.58-2.57)	Depositor EDS
$R_{merge}$	(Not available)	Depositor
$R_{sym}$	0.08	Depositor
$\langle I/\sigma(I) \rangle$ <sup>1</sup>	1.98 (at 2.57Å)	Xtriage
Refinement program	REFMAC	Depositor
R, $R_{free}$	0.230 , 0.291 0.225 , 0.285	Depositor DCC
$R_{free}$ test set	1644 reflections (5.07%)	wwPDB-VP
Wilson B-factor (Å <sup>2</sup> )	54.1	Xtriage
Anisotropy	0.373	Xtriage
Bulk solvent $k_{sol}$ (e/Å <sup>3</sup> ), $B_{sol}$ (Å <sup>2</sup> )	0.31 , 44.5	EDS
L-test for twinning <sup>2</sup>	$\langle  L  \rangle = 0.49$ , $\langle L^2 \rangle = 0.32$	Xtriage
Estimated twinning fraction	No twinning to report.	Xtriage
$F_o, F_c$ correlation	0.93	EDS
Total number of atoms	7261	wwPDB-VP
Average B, all atoms (Å <sup>2</sup> )	57.0	wwPDB-VP

Xtriage's analysis on translational NCS is as follows: *The largest off-origin peak in the Patterson function is 4.66% of the height of the origin peak. No significant pseudotranslation is detected.*

<sup>1</sup>Intensities estimated from amplitudes.

<sup>2</sup>Theoretical values of  $\langle |L| \rangle$ ,  $\langle L^2 \rangle$  for acentric reflections are 0.5, 0.333 respectively for untwinned datasets, and 0.375, 0.2 for perfectly twinned datasets.

## 5 Model quality

### 5.1 Standard geometry

Bond lengths and bond angles in the following residue types are not validated in this section: SO4, BTB, GOL

The Z score for a bond length (or angle) is the number of standard deviations the observed value is removed from the expected value. A bond length (or angle) with  $|Z| > 5$  is considered an outlier worth inspection. RMSZ is the root-mean-square of all Z scores of the bond lengths (or angles).

Mol	Chain	Bond lengths		Bond angles	
		RMSZ	$\# Z  > 5$	RMSZ	$\# Z  > 5$
1	D	0.77	0/1609	0.48	0/2177
1	K	0.78	0/1623	0.50	0/2197
2	E	0.70	1/2029 (0.0%)	0.47	0/2759
2	L	0.76	2/2029 (0.1%)	0.48	0/2759
All	All	0.75	3/7290 (0.0%)	0.48	0/9892

All (3) bond length outliers are listed below:

Mol	Chain	Res	Type	Atoms	Z	Observed(Å)	Ideal(Å)
2	E	92	CYS	CB-SG	-6.74	1.70	1.82
2	L	147	CYS	CB-SG	-6.60	1.71	1.82
2	L	212	CYS	CB-SG	-6.03	1.72	1.82

There are no bond angle outliers.

There are no chirality outliers.

There are no planarity outliers.

### 5.2 Too-close contacts

In the following table, the Non-H and H(model) columns list the number of non-hydrogen atoms and hydrogen atoms in the chain respectively. The H(added) column lists the number of hydrogen atoms added and optimized by MolProbity. The Clashes column lists the number of clashes within the asymmetric unit, whereas Symm-Clashes lists symmetry-related clashes.

Mol	Chain	Non-H	H(model)	H(added)	Clashes	Symm-Clashes
1	D	1573	0	1489	89	0
1	K	1586	0	1501	82	0
2	E	1974	0	1887	64	0
2	L	1974	0	1887	77	1

*Continued on next page...*

*Continued from previous page...*

Mol	Chain	Non-H	H(model)	H(added)	Clashes	Symm-Clashes
3	D	6	0	8	0	0
3	K	6	0	8	0	0
4	D	10	0	0	1	0
4	E	15	0	0	2	0
4	K	10	0	0	0	0
4	L	10	0	0	1	0
5	E	14	0	19	0	0
6	D	20	0	0	0	0
6	E	22	0	0	3	0
6	K	21	0	0	1	0
6	L	20	0	0	0	0
All	All	7261	0	6799	288	1

The all-atom clashscore is defined as the number of clashes found per 1000 atoms (including hydrogen atoms). The all-atom clashscore for this structure is 21.

The worst 5 of 288 close contacts within the same asymmetric unit are listed below, sorted by their clash magnitude.

Atom-1	Atom-2	Interatomic distance (Å)	Clash overlap (Å)
1:D:33:PHE:CD1	1:D:72:ILE:HD11	1.94	1.03
1:K:98:LYS:HG3	2:L:45:LEU:HD23	1.39	1.00
1:K:129:SER:HA	1:K:131:LYS:HE3	1.48	0.93
1:D:64:GLN:HE22	1:K:18:ILE:H	1.20	0.88
2:E:118:ASP:HB3	6:E:257:HOH:O	1.74	0.87

All (1) symmetry-related close contacts are listed below. The label for Atom-2 includes the symmetry operator and encoded unit-cell translations to be applied.

Atom-1	Atom-2	Interatomic distance (Å)	Clash overlap (Å)
2:L:62:GLU:OE1	2:L:102:LYS:NZ[1_565]	2.04	0.16

## 5.3 Torsion angles [i](#)

### 5.3.1 Protein backbone [i](#)

In the following table, the Percentiles column shows the percent Ramachandran outliers of the chain as a percentile score with respect to all X-ray entries followed by that with respect to entries of similar resolution.

The Analysed column shows the number of residues for which the backbone conformation was

analysed, and the total number of residues.

Mol	Chain	Analysed	Favoured	Allowed	Outliers	Percentiles	
1	D	197/201 (98%)	179 (91%)	14 (7%)	4 (2%)	7	13
1	K	199/201 (99%)	184 (92%)	13 (6%)	2 (1%)	15	31
2	E	244/246 (99%)	220 (90%)	23 (9%)	1 (0%)	34	55
2	L	244/246 (99%)	229 (94%)	13 (5%)	2 (1%)	19	37
All	All	884/894 (99%)	812 (92%)	63 (7%)	9 (1%)	15	31

5 of 9 Ramachandran outliers are listed below:

Mol	Chain	Res	Type
1	D	185	ALA
2	L	62	GLU
1	D	127	LYS
1	D	189	ASN
1	K	200	PRO

### 5.3.2 Protein sidechains ⓘ

In the following table, the Percentiles column shows the percent sidechain outliers of the chain as a percentile score with respect to all X-ray entries followed by that with respect to entries of similar resolution.

The Analysed column shows the number of residues for which the sidechain conformation was analysed, and the total number of residues.

Mol	Chain	Analysed	Rotameric	Outliers	Percentiles	
1	D	180/182 (99%)	172 (96%)	8 (4%)	28	51
1	K	182/182 (100%)	173 (95%)	9 (5%)	25	46
2	E	216/216 (100%)	206 (95%)	10 (5%)	27	49
2	L	216/216 (100%)	207 (96%)	9 (4%)	30	53
All	All	794/796 (100%)	758 (96%)	36 (4%)	27	50

5 of 36 residues with a non-rotameric sidechain are listed below:

Mol	Chain	Res	Type
2	L	38	THR
2	L	219	LEU
2	L	80	GLN
2	L	179	LEU

*Continued on next page...*

*Continued from previous page...*

Mol	Chain	Res	Type
2	E	64	ARG

Sometimes sidechains can be flipped to improve hydrogen bonding and reduce clashes. 5 of 28 such sidechains are listed below:

Mol	Chain	Res	Type
1	K	64	GLN
2	L	215	GLN
1	K	178	ASN
2	L	177	GLN
1	K	171	ASN

### 5.3.3 RNA [i](#)

There are no RNA molecules in this entry.

## 5.4 Non-standard residues in protein, DNA, RNA chains [i](#)

There are no non-standard protein/DNA/RNA residues in this entry.

## 5.5 Carbohydrates [i](#)

There are no monosaccharides in this entry.

## 5.6 Ligand geometry [i](#)

12 ligands are modelled in this entry.

In the following table, the Counts columns list the number of bonds (or angles) for which Mogul statistics could be retrieved, the number of bonds (or angles) that are observed in the model and the number of bonds (or angles) that are defined in the Chemical Component Dictionary. The Link column lists molecule types, if any, to which the group is linked. The Z score for a bond length (or angle) is the number of standard deviations the observed value is removed from the expected value. A bond length (or angle) with  $|Z| > 2$  is considered an outlier worth inspection. RMSZ is the root-mean-square of all Z scores of the bond lengths (or angles).

Mol	Type	Chain	Res	Link	Bond lengths			Bond angles		
					Counts	RMSZ	$\# Z  > 2$	Counts	RMSZ	$\# Z  > 2$
4	SO4	K	203	-	4,4,4	0.35	0	6,6,6	0.19	0
4	SO4	L	247	-	4,4,4	0.36	0	6,6,6	0.08	0
3	GOL	K	1	-	5,5,5	0.49	0	5,5,5	0.26	0

Mol	Type	Chain	Res	Link	Bond lengths			Bond angles		
					Counts	RMSZ	# Z  > 2	Counts	RMSZ	# Z  > 2
4	SO4	E	249	-	4,4,4	0.33	0	6,6,6	0.14	0
4	SO4	D	1	-	4,4,4	0.60	0	6,6,6	0.11	0
4	SO4	L	248	-	4,4,4	0.23	0	6,6,6	0.07	0
5	BTB	E	247	-	13,13,13	1.30	2 (15%)	7,16,16	0.59	0
3	GOL	D	203	-	5,5,5	0.60	0	5,5,5	0.17	0
4	SO4	E	248	-	4,4,4	0.51	0	6,6,6	0.11	0
4	SO4	E	250	-	4,4,4	0.45	0	6,6,6	0.12	0
4	SO4	D	204	-	4,4,4	0.29	0	6,6,6	0.09	0
4	SO4	K	204	-	4,4,4	0.24	0	6,6,6	0.11	0

In the following table, the Chirals column lists the number of chiral outliers, the number of chiral centers analysed, the number of these observed in the model and the number defined in the Chemical Component Dictionary. Similar counts are reported in the Torsion and Rings columns. '-' means no outliers of that kind were identified.

Mol	Type	Chain	Res	Link	Chirals	Torsions	Rings
3	GOL	D	203	-	-	4/4/4/4	-
3	GOL	K	1	-	-	4/4/4/4	-
5	BTB	E	247	-	-	13/21/21/21	-

All (2) bond length outliers are listed below:

Mol	Chain	Res	Type	Atoms	Z	Observed(Å)	Ideal(Å)
5	E	247	BTB	C4-C2	3.07	1.56	1.53
5	E	247	BTB	C1-C2	2.03	1.55	1.53

There are no bond angle outliers.

There are no chirality outliers.

5 of 21 torsion outliers are listed below:

Mol	Chain	Res	Type	Atoms
3	D	203	GOL	O1-C1-C2-C3
5	E	247	BTB	N-C2-C3-O3
5	E	247	BTB	C1-C2-C4-O4
5	E	247	BTB	C3-C2-C4-O4
5	E	247	BTB	N-C2-C4-O4

There are no ring outliers.

3 monomers are involved in 4 short contacts:

Mol	Chain	Res	Type	Clashes	Symm-Clashes
4	D	1	SO4	1	0
4	L	248	SO4	1	0
4	E	248	SO4	2	0

## 5.7 Other polymers [i](#)

There are no such residues in this entry.

## 5.8 Polymer linkage issues [i](#)

There are no chain breaks in this entry.

## 6 Fit of model and data [i](#)

### 6.1 Protein, DNA and RNA chains [i](#)

In the following table, the column labelled ‘#RSRZ> 2’ contains the number (and percentage) of RSRZ outliers, followed by percent RSRZ outliers for the chain as percentile scores relative to all X-ray entries and entries of similar resolution. The OWAB column contains the minimum, median, 95<sup>th</sup> percentile and maximum values of the occupancy-weighted average B-factor per residue. The column labelled ‘Q< 0.9’ lists the number of (and percentage) of residues with an average occupancy less than 0.9.

Mol	Chain	Analysed	<RSRZ>	#RSRZ>2	OWAB(Å <sup>2</sup> )	Q<0.9
1	D	199/201 (99%)	0.55	22 (11%) 5 4	23, 53, 121, 156	0
1	K	201/201 (100%)	0.05	5 (2%) 57 53	24, 46, 87, 119	0
2	E	246/246 (100%)	0.18	7 (2%) 53 49	25, 55, 100, 137	0
2	L	246/246 (100%)	0.15	9 (3%) 41 37	26, 54, 92, 114	0
All	All	892/894 (99%)	0.23	43 (4%) 30 26	23, 52, 104, 156	0

The worst 5 of 43 RSRZ outliers are listed below:

Mol	Chain	Res	Type	RSRZ
1	D	51	TYR	9.2
2	L	246	ASP	5.9
1	D	49	TYR	5.8
1	D	52	SER	5.0
1	K	114	GLN	4.8

### 6.2 Non-standard residues in protein, DNA, RNA chains [i](#)

There are no non-standard protein/DNA/RNA residues in this entry.

### 6.3 Carbohydrates [i](#)

There are no monosaccharides in this entry.

### 6.4 Ligands [i](#)

In the following table, the Atoms column lists the number of modelled atoms in the group and the number defined in the chemical component dictionary. The B-factors column lists the minimum, median, 95<sup>th</sup> percentile and maximum values of B factors of atoms in the group. The column labelled ‘Q< 0.9’ lists the number of atoms with occupancy less than 0.9.



Mol	Type	Chain	Res	Atoms	RSCC	RSR	B-factors( $\text{\AA}^2$ )	Q<0.9
5	BTB	E	247	14/14	0.55	0.33	72,80,85,86	0
3	GOL	K	1	6/6	0.71	0.25	58,69,75,77	0
4	SO4	D	204	5/5	0.75	0.54	100,100,100,100	0
3	GOL	D	203	6/6	0.75	0.35	54,62,66,68	0
4	SO4	E	249	5/5	0.92	0.29	56,60,74,80	0
4	SO4	L	247	5/5	0.94	0.18	70,72,76,80	0
4	SO4	E	250	5/5	0.94	0.24	53,56,61,62	0
4	SO4	K	203	5/5	0.95	0.20	51,59,67,68	0
4	SO4	L	248	5/5	0.97	0.32	84,84,89,89	0
4	SO4	K	204	5/5	0.97	0.26	64,70,73,78	0
4	SO4	E	248	5/5	0.98	0.16	31,36,52,57	0
4	SO4	D	1	5/5	0.99	0.15	19,21,35,35	0

## 6.5 Other polymers [i](#)

There are no such residues in this entry.