



## wwPDB EM Validation Summary Report ⓘ

Feb 20, 2025 – 09:52 AM EST

PDB ID : 4UX1  
EMDB ID : EMD-2759  
Title : Cryo-EM structure of antagonist-bound E2P gastric H,K-ATPase (SCH.E2.AIF)  
Authors : Abe, K.; Tani, K.; Fujiyoshi, Y.  
Deposited on : 2014-08-18  
Resolution : 8.00 Å(reported)

This is a wwPDB EM Validation Summary Report for a publicly released PDB entry.

We welcome your comments at [validation@mail.wwpdb.org](mailto:validation@mail.wwpdb.org)

A user guide is available at

<https://www.wwpdb.org/validation/2017/EMValidationReportHelp>  
with specific help available everywhere you see the ⓘ symbol.

The types of validation reports are described at

<http://www.wwpdb.org/validation/2017/FAQs#types>.

---

The following versions of software and data (see [references ⓘ](#)) were used in the production of this report:

EMDB validation analysis : 0.0.1.dev117  
MolProbity : 4.02b-467  
Percentile statistics : 20231227.v01 (using entries in the PDB archive December 27th 2023)  
MapQ : 1.9.13  
Ideal geometry (proteins) : Engh & Huber (2001)  
Ideal geometry (DNA, RNA) : Parkinson et al. (1996)  
Validation Pipeline (wwPDB-VP) : 2.41.4

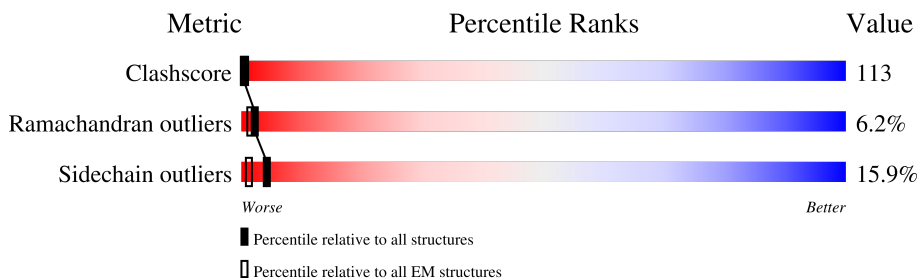
# 1 Overall quality at a glance

The following experimental techniques were used to determine the structure:

*ELECTRON CRYSTALLOGRAPHY*

The reported resolution of this entry is 8.00 Å.

Percentile scores (ranging between 0-100) for global validation metrics of the entry are shown in the following graphic. The table shows the number of entries on which the scores are based.



Metric	Whole archive (#Entries)	EM structures (#Entries)
Clashscore	210492	15764
Ramachandran outliers	207382	16835
Sidechain outliers	206894	16415

The table below summarises the geometric issues observed across the polymeric chains and their fit to the map. The red, orange, yellow and green segments of the bar indicate the fraction of residues that contain outliers for  $\geq 3$ , 2, 1 and 0 types of geometric quality criteria respectively. A grey segment represents the fraction of residues that are not modelled. The numeric value for each fraction is indicated below the corresponding segment, with a dot representing fractions  $\leq 5\%$ . The upper red bar (where present) indicates the fraction of residues that have poor fit to the EM map (all-atom inclusion  $< 40\%$ ). The numeric value is given above the bar.

Mol	Chain	Length	Quality of chain
1	A	1034	
2	B	290	

## 2 Entry composition

There are 2 unique types of molecules in this entry. The entry contains 9161 atoms, of which 0 are hydrogens and 0 are deuteriums.

In the tables below, the AltConf column contains the number of residues with at least one atom in alternate conformation and the Trace column contains the number of residues modelled with at most 2 atoms.

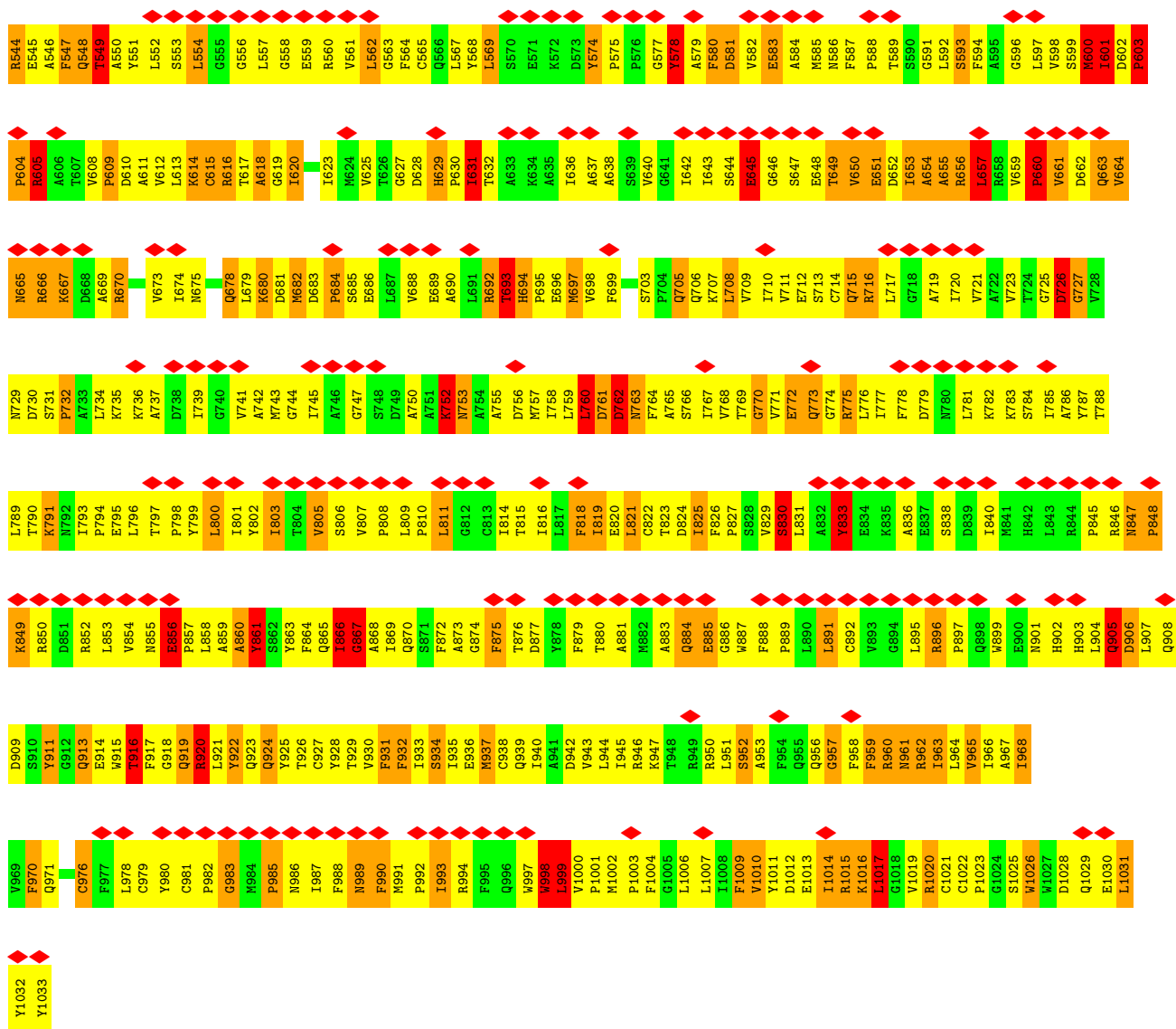
- Molecule 1 is a protein called POTASSIUM-TRANSPORTING ATPASE ALPHA CHAIN 1.

Mol	Chain	Residues	Atoms					AltConf	Trace
			Total	C	N	O	S		
1	A	993	7718	4927	1304	1434	53	0	0

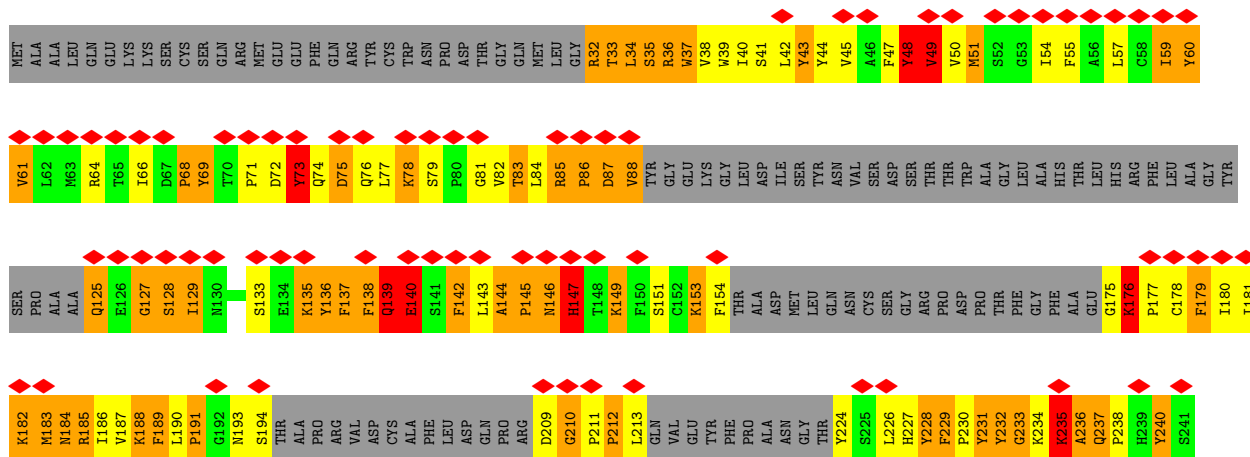
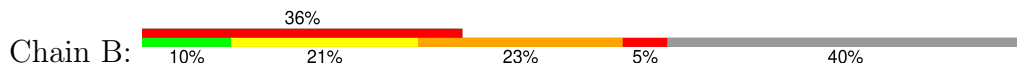
- Molecule 2 is a protein called POTASSIUM-TRANSPORTING ATPASE SUBUNIT BETA.

Mol	Chain	Residues	Atoms					AltConf	Trace
			Total	C	N	O	S		
2	B	175	1443	949	237	249	8	0	0





● Molecule 2: POTASSIUM-TRANSPORTING ATPASE SUBUNIT BETA



N242	P243	LEU	VAL	ALA	ALA	K248	L249	L250	N251	V252	P253	R254	N255	R256	D257	V258	V259	I260	V261	C262	K263	I264	L265	A266	E267	H268	V269	S270	F271	D272	N273	P274	H275	D276	P277	Y278	E279	G280	K281	V282	E283	F284	K285	L286	K287	I288	Q289	K290
------	------	-----	-----	-----	-----	------	------	------	------	------	------	------	------	------	------	------	------	------	------	------	------	------	------	------	------	------	------	------	------	------	------	------	------	------	------	------	------	------	------	------	------	------	------	------	------	------	------	------

## 4 Experimental information

Property	Value	Source
EM reconstruction method	CRYSTALLOGRAPHY	Depositor
Imposed symmetry	2D CRYSTAL, $a$ =Not provided Å, $b$ =Not provided Å, $c$ =Not provided Å, $\gamma$ =Not provided°, space group=Not provided	Depositor
Number of images used	Not provided	
Resolution determination method	DIFFRACTION PATTERN/LAYERLINES	Depositor
CTF correction method	Not provided	
Microscope	JEOL KYOTO-3000SFF	Depositor
Voltage (kV)	300	Depositor
Electron dose ( $e^-/\text{\AA}^2$ )	20	Depositor
Minimum defocus (nm)	808	Depositor
Maximum defocus (nm)	2997	Depositor
Magnification	40000	Depositor
Image detector	KODAK SO-163 FILM	Depositor
Maximum map value	6.195	Depositor
Minimum map value	-4.354	Depositor
Average map value	-0.003	Depositor
Map value standard deviation	0.993	Depositor
Recommended contour level	1.6	Depositor
Map size (Å)	143.08, 113.46, 322.0	wwPDB
Map dimensions	61, 73, 161	wwPDB
Map angles (°)	90.0, 90.0, 90.0	wwPDB
Pixel spacing (Å)	1.96, 1.86, 2.0	Depositor

## 5 Model quality

### 5.1 Standard geometry

The Z score for a bond length (or angle) is the number of standard deviations the observed value is removed from the expected value. A bond length (or angle) with  $|Z| > 5$  is considered an outlier worth inspection. RMSZ is the root-mean-square of all Z scores of the bond lengths (or angles).

Mol	Chain	Bond lengths		Bond angles	
		RMSZ	$\# Z  > 5$	RMSZ	$\# Z  > 5$
1	A	1.18	3/7876 (0.0%)	1.45	53/10694 (0.5%)
2	B	1.11	1/1486 (0.1%)	1.51	13/2008 (0.6%)
All	All	1.17	4/9362 (0.0%)	1.46	66/12702 (0.5%)

Chiral center outliers are detected by calculating the chiral volume of a chiral center and verifying if the center is modelled as a planar moiety or with the opposite hand. A planarity outlier is detected by checking planarity of atoms in a peptide group, atoms in a mainchain group or atoms of a sidechain that are expected to be planar.

Mol	Chain	#Chirality outliers	#Planarity outliers
1	A	0	287
2	B	0	58
All	All	0	345

All (4) bond length outliers are listed below:

Mol	Chain	Res	Type	Atoms	Z	Observed(Å)	Ideal(Å)
1	A	522	ARG	CZ-NH2	5.22	1.39	1.33
2	B	254	ARG	CZ-NH2	5.22	1.39	1.33
1	A	439	ARG	NE-CZ	5.08	1.39	1.33
1	A	846	ARG	NE-CZ	5.04	1.39	1.33

The worst 5 of 66 bond angle outliers are listed below:

Mol	Chain	Res	Type	Atoms	Z	Observed(°)	Ideal(°)
1	A	140	TYR	CB-CG-CD1	11.10	127.66	121.00
2	B	254	ARG	NE-CZ-NH1	9.32	124.96	120.30
2	B	232	TYR	CB-CG-CD1	-8.99	115.61	121.00
2	B	68	PRO	CA-N-CD	-8.70	99.32	111.50
1	A	716	ARG	NE-CZ-NH1	-8.13	116.23	120.30

There are no chirality outliers.



5 of 345 planarity outliers are listed below:

Mol	Chain	Res	Type	Group
1	A	41	LEU	Mainchain
1	A	43	ASN	Mainchain
1	A	46	LYS	Mainchain
1	A	47	GLU	Mainchain
1	A	48	MET	Mainchain

## 5.2 Too-close contacts [i](#)

In the following table, the Non-H and H(model) columns list the number of non-hydrogen atoms and hydrogen atoms in the chain respectively. The H(added) column lists the number of hydrogen atoms added and optimized by MolProbity. The Clashes column lists the number of clashes within the asymmetric unit, whereas Symm-Clashes lists symmetry-related clashes.

Mol	Chain	Non-H	H(model)	H(added)	Clashes	Symm-Clashes
1	A	7718	0	7752	1797	0
2	B	1443	0	1431	394	0
All	All	9161	0	9183	2079	0

The all-atom clashscore is defined as the number of clashes found per 1000 atoms (including hydrogen atoms). The all-atom clashscore for this structure is 113.

The worst 5 of 2079 close contacts within the same asymmetric unit are listed below, sorted by their clash magnitude.

Atom-1	Atom-2	Interatomic distance (Å)	Clash overlap (Å)
1:A:399:HIS:CD2	1:A:408:SER:HA	1.31	1.59
2:B:32:ARG:CZ	2:B:34:LEU:HD11	1.31	1.55
1:A:940:ILE:CD1	1:A:968:ILE:HG13	1.17	1.54
1:A:360:LEU:CD1	1:A:773:GLN:HG3	1.07	1.54
1:A:537:LEU:HG	1:A:538:PRO:CD	1.40	1.51

There are no symmetry-related clashes.

## 5.3 Torsion angles [i](#)

### 5.3.1 Protein backbone [i](#)

In the following table, the Percentiles column shows the percent Ramachandran outliers of the chain as a percentile score with respect to all PDB entries followed by that with respect to all EM entries.

The Analysed column shows the number of residues for which the backbone conformation was analysed, and the total number of residues.

Mol	Chain	Analysed	Favoured	Allowed	Outliers	Percentiles	
1	A	991/1034 (96%)	840 (85%)	95 (10%)	56 (6%)	1	14
2	B	163/290 (56%)	132 (81%)	16 (10%)	15 (9%)	0	8
All	All	1154/1324 (87%)	972 (84%)	111 (10%)	71 (6%)	2	13

5 of 71 Ramachandran outliers are listed below:

Mol	Chain	Res	Type
1	A	86	PRO
1	A	92	PRO
1	A	93	ARG
1	A	94	GLY
1	A	128	ALA

### 5.3.2 Protein sidechains ⓘ

In the following table, the Percentiles column shows the percent sidechain outliers of the chain as a percentile score with respect to all PDB entries followed by that with respect to all EM entries.

The Analysed column shows the number of residues for which the sidechain conformation was analysed, and the total number of residues.

Mol	Chain	Analysed	Rotameric	Outliers	Percentiles	
1	A	840/869 (97%)	714 (85%)	126 (15%)	2	11
2	B	162/254 (64%)	129 (80%)	33 (20%)	1	6
All	All	1002/1123 (89%)	843 (84%)	159 (16%)	4	10

5 of 159 residues with a non-rotameric sidechain are listed below:

Mol	Chain	Res	Type
1	A	937	MET
2	B	154	PHE
1	A	993	ILE
2	B	48	TYR
2	B	248	LYS

Sometimes sidechains can be flipped to improve hydrogen bonding and reduce clashes. 5 of 24 such sidechains are listed below:

Mol	Chain	Res	Type
1	A	847	ASN
1	A	919	GLN
1	A	884	GLN
1	A	924	GLN
1	A	224	ASN

### 5.3.3 RNA [i](#)

There are no RNA molecules in this entry.

### 5.4 Non-standard residues in protein, DNA, RNA chains [i](#)

There are no non-standard protein/DNA/RNA residues in this entry.

### 5.5 Carbohydrates [i](#)

There are no oligosaccharides in this entry.

### 5.6 Ligand geometry [i](#)

There are no ligands in this entry.

### 5.7 Other polymers [i](#)

There are no such residues in this entry.

### 5.8 Polymer linkage issues [i](#)

There are no chain breaks in this entry.

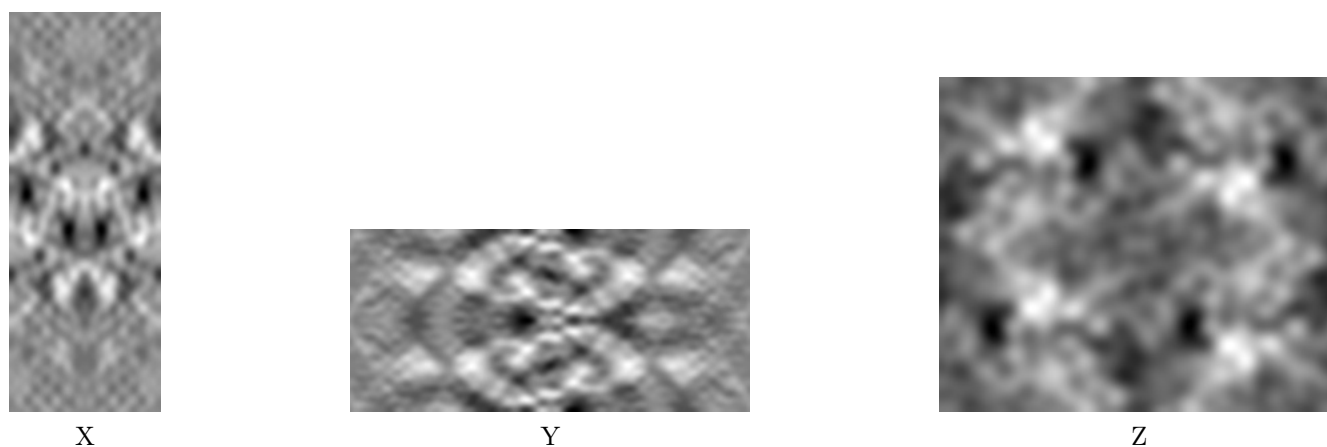
## 6 Map visualisation [i](#)

This section contains visualisations of the EMDB entry EMD-2759. These allow visual inspection of the internal detail of the map and identification of artifacts.

No raw map or half-maps were deposited for this entry and therefore no images, graphs, etc. pertaining to the raw map can be shown.

### 6.1 Orthogonal projections [i](#)

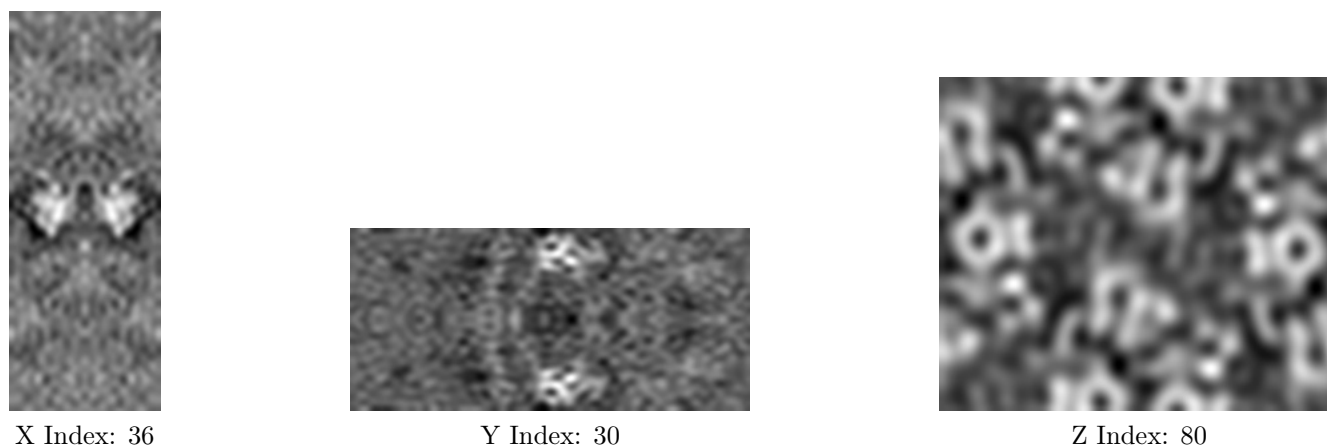
#### 6.1.1 Primary map



The images above show the map projected in three orthogonal directions.

### 6.2 Central slices [i](#)

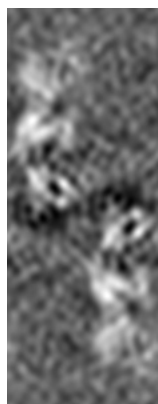
#### 6.2.1 Primary map



The images above show central slices of the map in three orthogonal directions.

## 6.3 Largest variance slices [i](#)

### 6.3.1 Primary map



X Index: 54



Y Index: 10

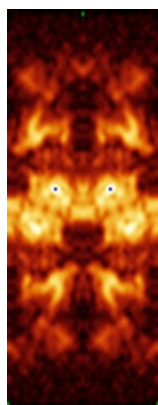


Z Index: 77

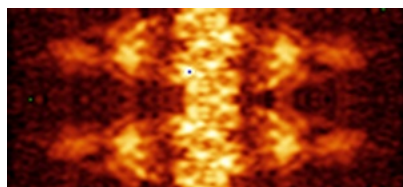
The images above show the largest variance slices of the map in three orthogonal directions.

## 6.4 Orthogonal standard-deviation projections (False-color) [i](#)

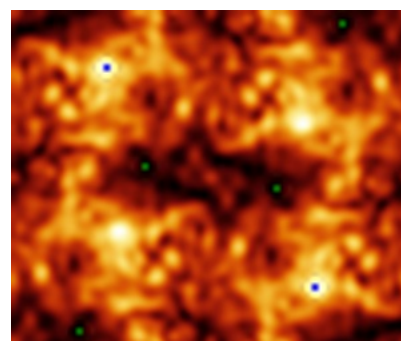
### 6.4.1 Primary map



X



Y



Z

The images above show the map standard deviation projections with false color in three orthogonal directions. Minimum values are shown in green, max in blue, and dark to light orange shades represent small to large values respectively.

## 6.5 Orthogonal surface views [i](#)

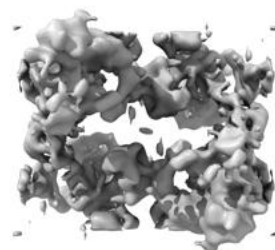
### 6.5.1 Primary map



X



Y



Z

The images above show the 3D surface view of the map at the recommended contour level 1.6. These images, in conjunction with the slice images, may facilitate assessment of whether an appropriate contour level has been provided.

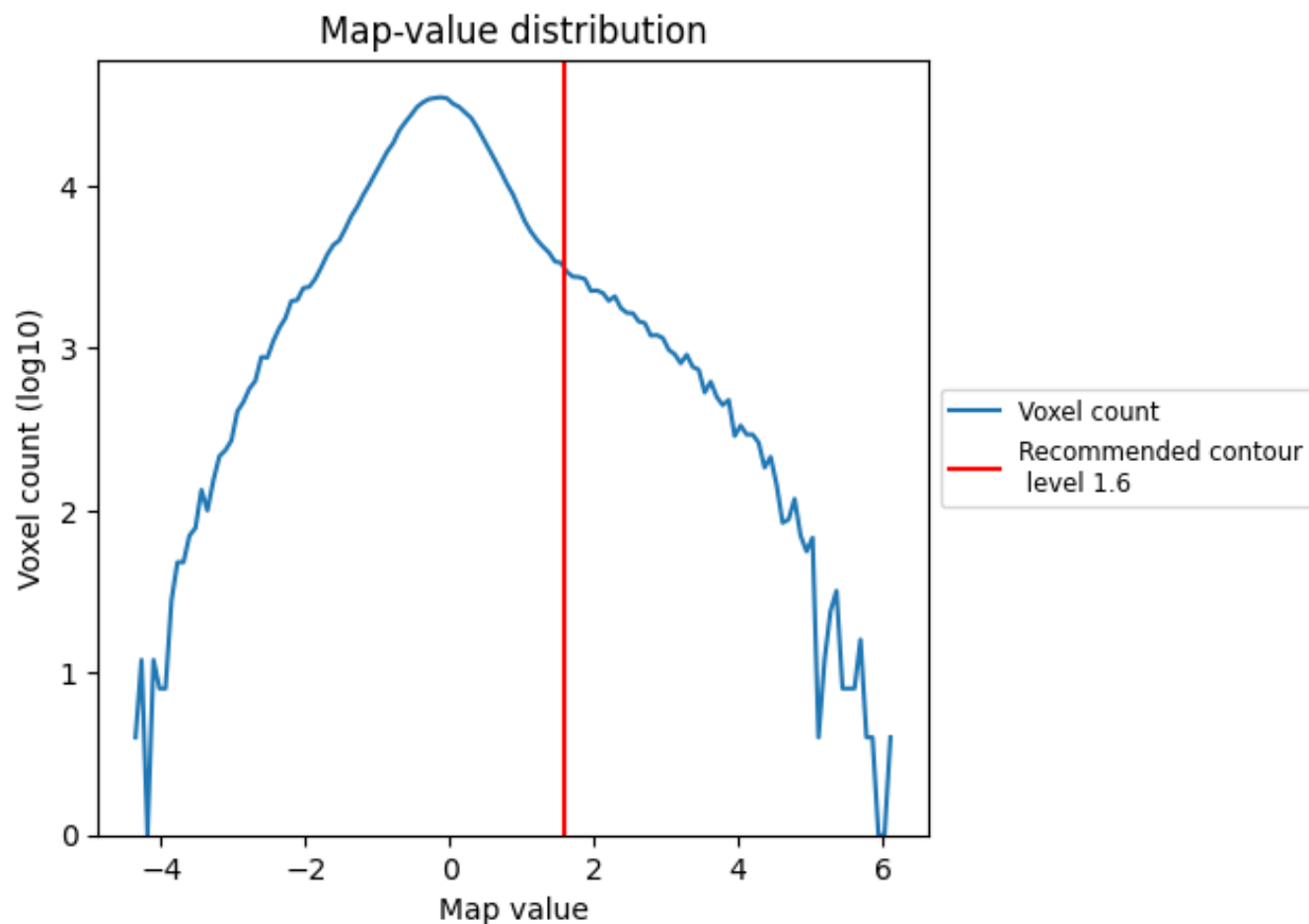
## 6.6 Mask visualisation [i](#)

This section was not generated. No masks/segmentation were deposited.

## 7 Map analysis [i](#)

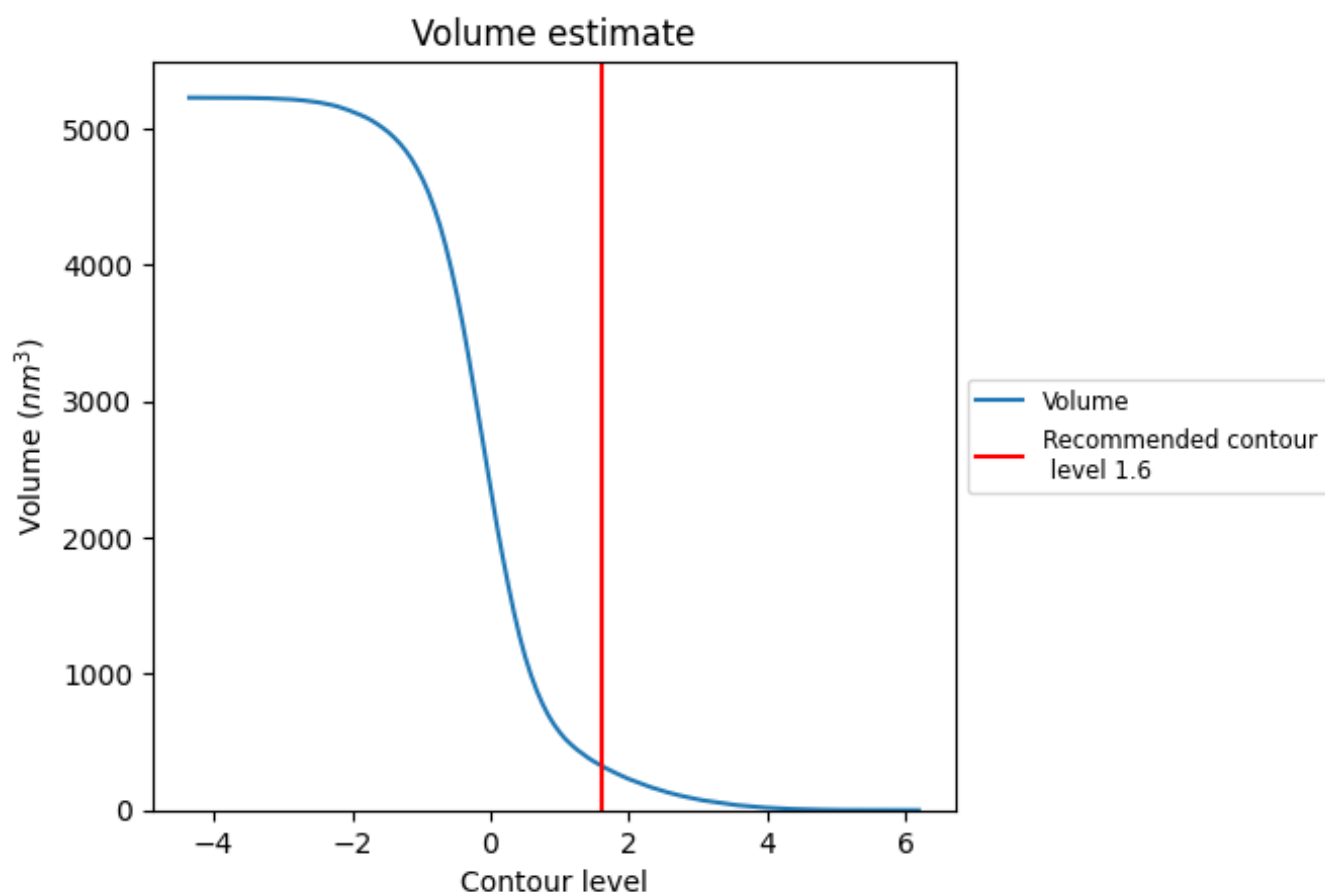
This section contains the results of statistical analysis of the map.

### 7.1 Map-value distribution [i](#)



The map-value distribution is plotted in 128 intervals along the x-axis. The y-axis is logarithmic. A spike in this graph at zero usually indicates that the volume has been masked.

## 7.2 Volume estimate [i](#)



The volume at the recommended contour level is 328 nm<sup>3</sup>; this corresponds to an approximate mass of 296 kDa.

The volume estimate graph shows how the enclosed volume varies with the contour level. The recommended contour level is shown as a vertical line and the intersection between the line and the curve gives the volume of the enclosed surface at the given level.

## 7.3 Rotationally averaged power spectrum [i](#)

This section was not generated. The rotationally averaged power spectrum is only generated for cubic maps.



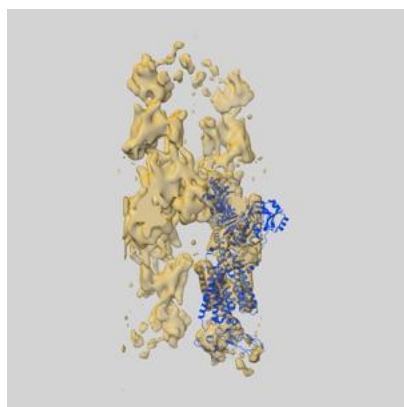
## 8 Fourier-Shell correlation ⓘ

This section was not generated. No FSC curve or half-maps provided.

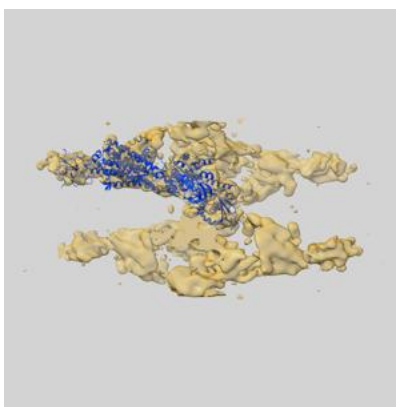
## 9 Map-model fit [i](#)

This section contains information regarding the fit between EMDB map EMD-2759 and PDB model 4UX1. Per-residue inclusion information can be found in [section 3](#) on [page 4](#).

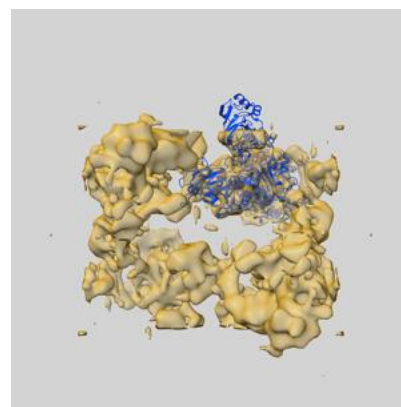
### 9.1 Map-model overlay [i](#)



X



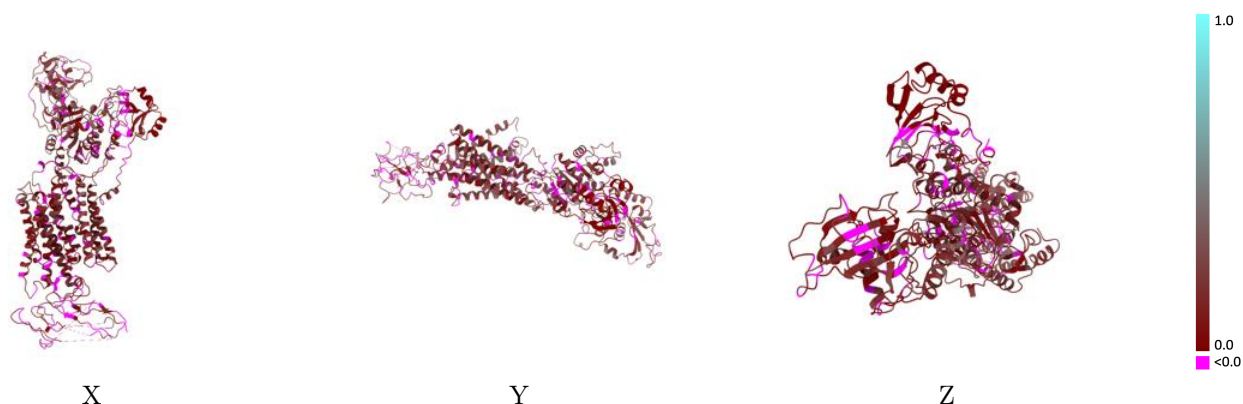
Y



Z

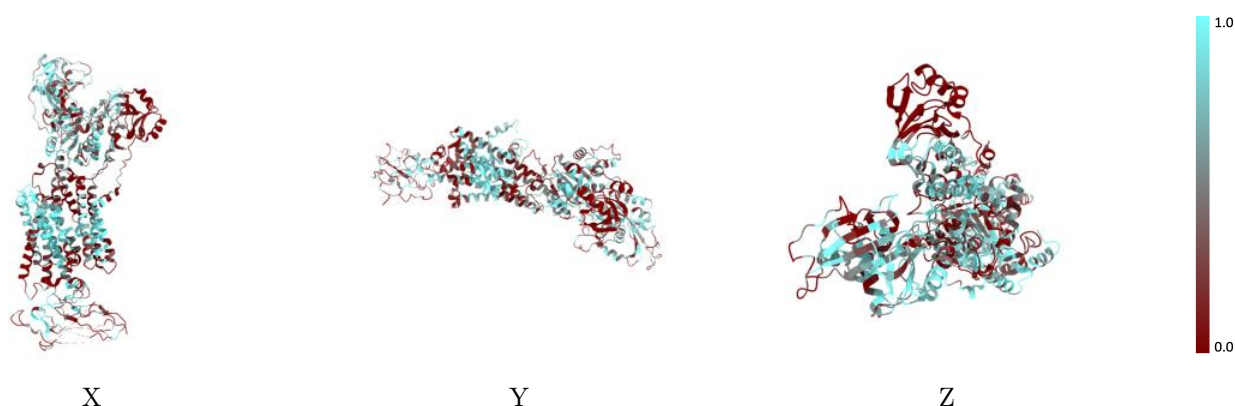
The images above show the 3D surface view of the map at the recommended contour level 1.6 at 50% transparency in yellow overlaid with a ribbon representation of the model coloured in blue. These images allow for the visual assessment of the quality of fit between the atomic model and the map.

## 9.2 Q-score mapped to coordinate model [i](#)



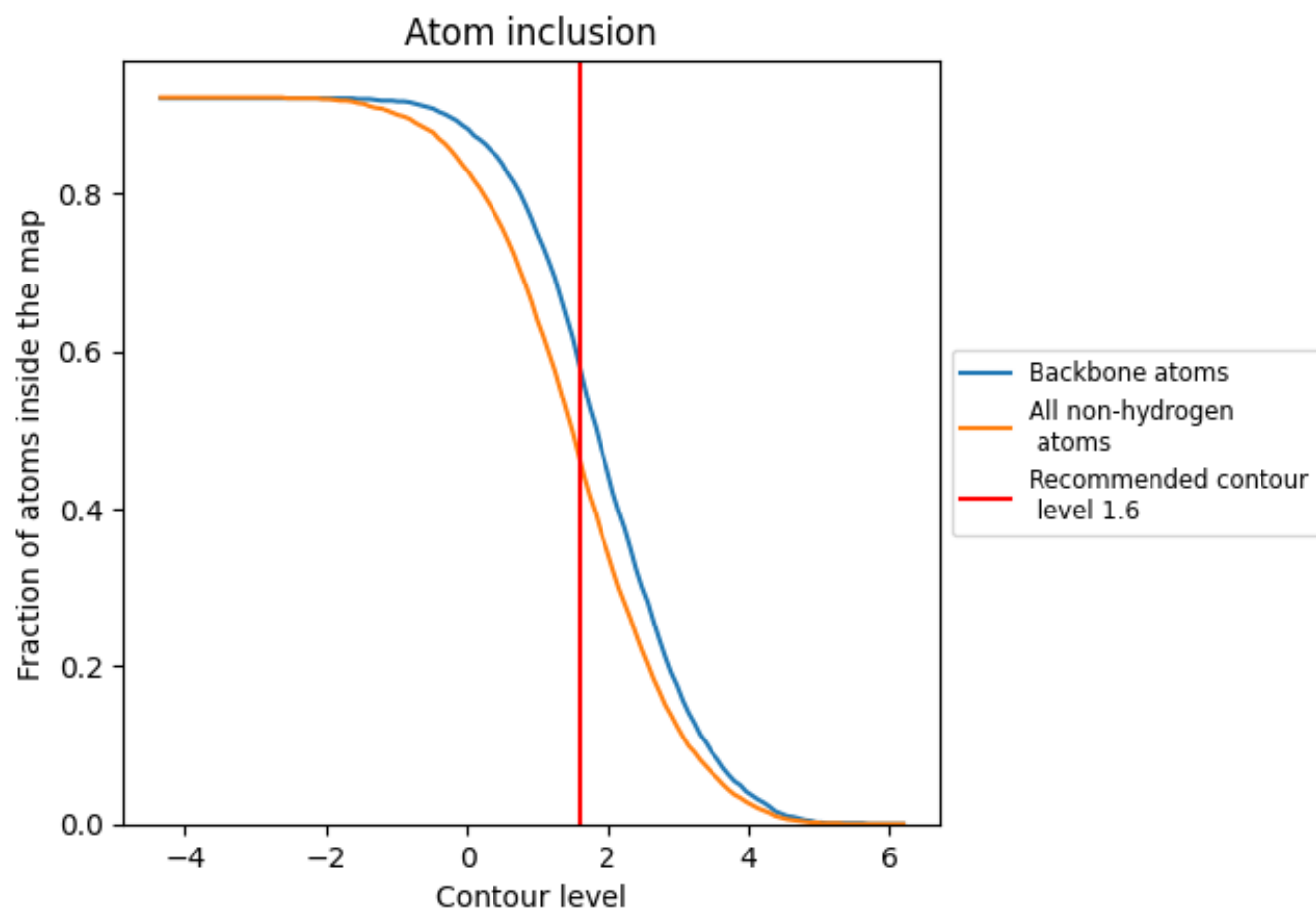
The images above show the model with each residue coloured according its Q-score. This shows their resolvability in the map with higher Q-score values reflecting better resolvability. Please note: Q-score is calculating the resolvability of atoms, and thus high values are only expected at resolutions at which atoms can be resolved. Low Q-score values may therefore be expected for many entries.

## 9.3 Atom inclusion mapped to coordinate model [i](#)



The images above show the model with each residue coloured according to its atom inclusion. This shows to what extent they are inside the map at the recommended contour level (1.6).

## 9.4 Atom inclusion [i](#)



At the recommended contour level, 58% of all backbone atoms, 46% of all non-hydrogen atoms, are inside the map.

9.5 Map-model fit summary ⓘ

The table lists the average atom inclusion at the recommended contour level (1.6) and Q-score for the entire model and for each chain.

Chain	Atom inclusion	Q-score
All	<div></div> 0.4630	<div></div> 0.1060
A	<div></div> 0.4780	<div></div> 0.1110
B	<div></div> 0.3810	<div></div> 0.0770

