



wwPDB X-ray Structure Validation Summary Report ⓘ

Dec 15, 2024 – 10:03 AM EST

PDB ID : 8VKD
Title : Crystal structure of dehaloperoxidase A in complex with substrate 4-nitrocatechol
Authors : Aktar, M.S.; de Serrano, V.S.; Ghiladi, R.A.; Franzen, S.
Deposited on : 2024-01-08
Resolution : 1.40 Å(reported)

This is a wwPDB X-ray Structure Validation Summary Report for a publicly released PDB entry.

We welcome your comments at validation@mail.wwpdb.org

A user guide is available at

<https://www.wwpdb.org/validation/2017/XrayValidationReportHelp>

with specific help available everywhere you see the ⓘ symbol.

The types of validation reports are described at

<http://www.wwpdb.org/validation/2017/FAQs#types>.

The following versions of software and data (see [references ⓘ](#)) were used in the production of this report:

MolProbity	:	4.02b-467
Mogul	:	2022.3.0, CSD as543be (2022)
Xtriage (Phenix)	:	1.21
EDS	:	3.0
buster-report	:	1.1.7 (2018)
Percentile statistics	:	20231227.v01 (using entries in the PDB archive December 27th 2023)
CCP4	:	9.0.004 (Gargrove)
Density-Fitness	:	1.0.11
Ideal geometry (proteins)	:	Engh & Huber (2001)
Ideal geometry (DNA, RNA)	:	Parkinson et al. (1996)
Validation Pipeline (wwPDB-VP)	:	2.40

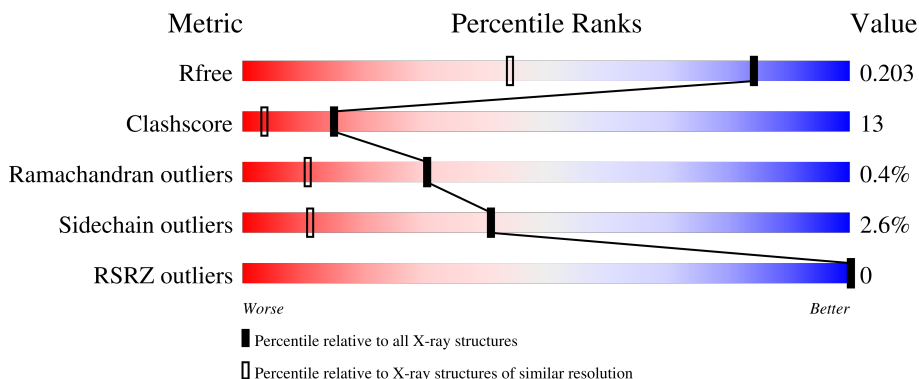
1 Overall quality at a glance

The following experimental techniques were used to determine the structure:

X-RAY DIFFRACTION



The reported resolution of this entry is 1.40 Å.

Percentile scores (ranging between 0-100) for global validation metrics of the entry are shown in the following graphic. The table shows the number of entries on which the scores are based.



Metric	Whole archive (#Entries)	Similar resolution (#Entries, resolution range(Å))
R_{free}	164625	2247 (1.40-1.40)
Clashscore	180529	2446 (1.40-1.40)
Ramachandran outliers	177936	2398 (1.40-1.40)
Sidechain outliers	177891	2397 (1.40-1.40)
RSRZ outliers	164620	2246 (1.40-1.40)

The table below summarises the geometric issues observed across the polymeric chains and their fit to the electron density. The red, orange, yellow and green segments of the lower bar indicate the fraction of residues that contain outliers for ≥ 3 , 2, 1 and 0 types of geometric quality criteria respectively. A grey segment represents the fraction of residues that are not modelled. The numeric value for each fraction is indicated below the corresponding segment, with a dot representing fractions $\leq 5\%$. The upper red bar (where present) indicates the fraction of residues that have poor fit to the electron density. The numeric value is given above the bar.

Mol	Chain	Length	Quality of chain
1	AAA	137	
1	BBB	137	

The following table lists non-polymeric compounds, carbohydrate monomers and non-standard residues in protein, DNA, RNA chains that are outliers for geometric or electron-density-fit criteria:

Mol	Type	Chain	Res	Chirality	Geometry	Clashes	Electron density
4	PEG	AAA	203[A]	-	-	X	-
4	PEG	AAA	206	-	-	X	-
5	4NC	AAA	204	-	-	X	-
5	4NC	BBB	202	-	-	X	-
6	DMS	AAA	205	-	-	X	-

2 Entry composition [i](#)

There are 8 unique types of molecules in this entry. The entry contains 2980 atoms, of which 0 are hydrogens and 0 are deuteriums.

In the tables below, the ZeroOcc column contains the number of atoms modelled with zero occupancy, the AltConf column contains the number of residues with at least one atom in alternate conformation and the Trace column contains the number of residues modelled with at most 2 atoms.

- Molecule 1 is a protein called Dehaloperoxidase A.

Mol	Chain	Residues	Atoms					ZeroOcc	AltConf	Trace
1	AAA	137	Total	C	N	O	S	0	28	0
			1334	824	241	261	8			
1	BBB	137	Total	C	N	O	S	0	25	0
			1284	797	224	256	7			

- Molecule 2 is PROTOPORPHYRIN IX CONTAINING FE (three-letter code: HEM) (formula: $C_{34}H_{32}FeN_4O_4$) (labeled as "Ligand of Interest" by depositor).



Mol	Chain	Residues	Atoms					ZeroOcc	AltConf
2	AAA	1	Total	C	Fe	N	O	0	0
			43	34	1	4	4		
2	BBB	1	Total	C	Fe	N	O	0	0
			43	34	1	4	4		

- Molecule 3 is GLYCEROL (three-letter code: GOL) (formula: $C_3H_8O_3$).



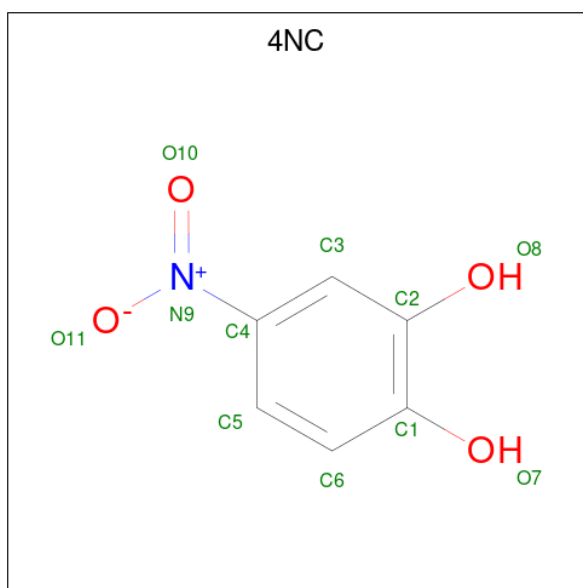
Mol	Chain	Residues	Atoms			ZeroOcc	AltConf
3	AAA	1	Total	C	O	0	0
			6	3	3		
3	AAA	1	Total	C	O	0	0
			6	3	3		

- Molecule 4 is DI(HYDROXYETHYL)ETHER (three-letter code: PEG) (formula: $C_4H_{10}O_3$).



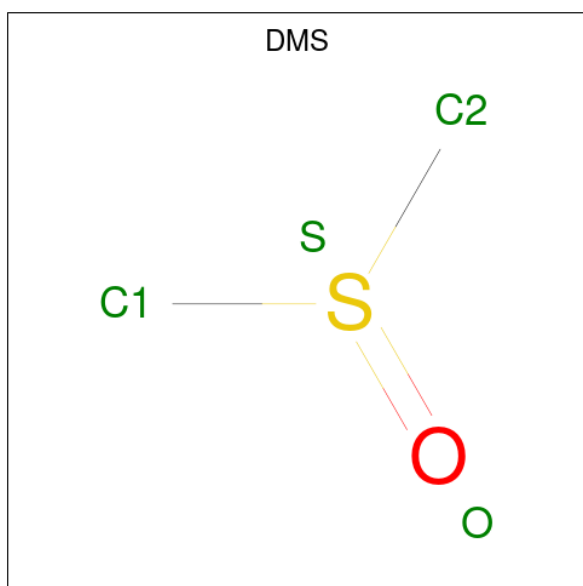
Mol	Chain	Residues	Atoms			ZeroOcc	AltConf
4	AAA	1	Total	C	O	0	1
			14	8	6		
4	AAA	1	Total	C	O	0	0
			7	4	3		

- Molecule 5 is 4-NITROCATECHOL (three-letter code: 4NC) (formula: $C_6H_5NO_4$).



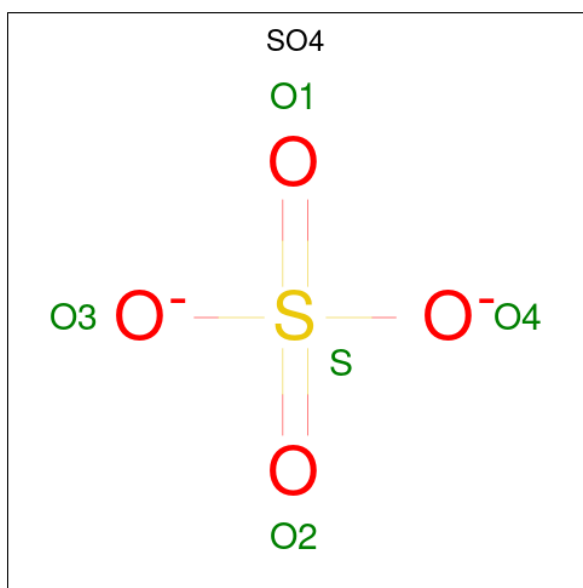
Mol	Chain	Residues	Atoms				ZeroOcc	AltConf
5	AAA	1	Total	C	N	O	0	0
			11	6	1	4		
5	BBB	1	Total	C	N	O	0	0
			11	6	1	4		

- Molecule 6 is DIMETHYL SULFOXIDE (three-letter code: DMS) (formula: C_2H_6OS).



Mol	Chain	Residues	Atoms				ZeroOcc	AltConf
6	AAA	1	Total	C	O	S	0	0
			4	2	1	1		

- Molecule 7 is SULFATE ION (three-letter code: SO4) (formula: O₄S).



Mol	Chain	Residues	Atoms			ZeroOcc	AltConf
7	AAA	1	Total	O	S	0	0
			5	4	1		
7	BBB	1	Total	O	S	0	0
			5	4	1		
7	BBB	1	Total	O	S	0	0
			5	4	1		

- Molecule 8 is water.

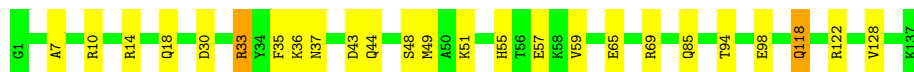
Mol	Chain	Residues	Atoms		ZeroOcc	AltConf
8	AAA	105	Total	O	0	0
			105	105		
8	BBB	97	Total	O	0	0
			97	97		

3 Residue-property plots [i](#)

These plots are drawn for all protein, RNA, DNA and oligosaccharide chains in the entry. The first graphic for a chain summarises the proportions of the various outlier classes displayed in the second graphic. The second graphic shows the sequence view annotated by issues in geometry and electron density. Residues are color-coded according to the number of geometric quality criteria for which they contain at least one outlier: green = 0, yellow = 1, orange = 2 and red = 3 or more. A red dot above a residue indicates a poor fit to the electron density ($RSRZ > 2$). Stretches of 2 or more consecutive residues without any outlier are shown as a green connector. Residues present in the sample, but not in the model, are shown in grey.

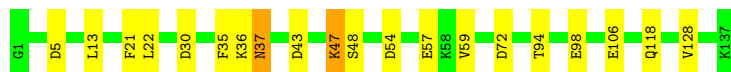
- Molecule 1: Dehaloperoxidase A

Chain AAA:  82% 17%



- Molecule 1: Dehaloperoxidase A

Chain BBB:  85% 13%



4 Data and refinement statistics

Property	Value	Source
Space group	P 21 21 21	Depositor
Cell constants a, b, c, α , β , γ	58.36Å 68.04Å 68.31Å 90.00° 90.00° 90.00°	Depositor
Resolution (Å)	44.41 – 1.40 44.41 – 1.40	Depositor EDS
% Data completeness (in resolution range)	94.7 (44.41-1.40) 93.8 (44.41-1.40)	Depositor EDS
R_{merge}	(Not available)	Depositor
R_{sym}	(Not available)	Depositor
$\langle I/\sigma(I) \rangle$ ¹	1.97 (at 1.40Å)	Xtriage
Refinement program	REFMAC 5.8.0267	Depositor
R, R_{free}	0.166 , 0.201 0.172 , 0.203	Depositor DCC
R_{free} test set	2580 reflections (5.02%)	wwPDB-VP
Wilson B-factor (Å ²)	11.9	Xtriage
Anisotropy	0.297	Xtriage
Bulk solvent k_{sol} (e/Å ³), B_{sol} (Å ²)	0.39 , 30.1	EDS
L-test for twinning ²	$\langle L \rangle = 0.44$, $\langle L^2 \rangle = 0.27$	Xtriage
Estimated twinning fraction	0.097 for -h,l,k	Xtriage
F_o, F_c correlation	0.97	EDS
Total number of atoms	2980	wwPDB-VP
Average B, all atoms (Å ²)	16.0	wwPDB-VP

Xtriage's analysis on translational NCS is as follows: *The largest off-origin peak in the Patterson function is 6.83% of the height of the origin peak. No significant pseudotranslation is detected.*

¹Intensities estimated from amplitudes.

²Theoretical values of $\langle |L| \rangle$, $\langle L^2 \rangle$ for acentric reflections are 0.5, 0.333 respectively for untwinned datasets, and 0.375, 0.2 for perfectly twinned datasets.

5 Model quality [i](#)

5.1 Standard geometry [i](#)

Bond lengths and bond angles in the following residue types are not validated in this section: 4NC, HEM, DMS, SO4, PEG, GOL

The Z score for a bond length (or angle) is the number of standard deviations the observed value is removed from the expected value. A bond length (or angle) with $|Z| > 5$ is considered an outlier worth inspection. RMSZ is the root-mean-square of all Z scores of the bond lengths (or angles).

Mol	Chain	Bond lengths		Bond angles	
		RMSZ	$\# Z > 5$	RMSZ	$\# Z > 5$
1	AAA	0.93	0/1355	0.95	0/1809
1	BBB	0.87	0/1314	0.95	1/1757 (0.1%)
All	All	0.90	0/2669	0.95	1/3566 (0.0%)

There are no bond length outliers.

All (1) bond angle outliers are listed below:

Mol	Chain	Res	Type	Atoms	Z	Observed(°)	Ideal(°)
1	BBB	5	ASP	CB-CG-OD2	-6.25	112.67	118.30

There are no chirality outliers.

There are no planarity outliers.

5.2 Too-close contacts [i](#)

In the following table, the Non-H and H(model) columns list the number of non-hydrogen atoms and hydrogen atoms in the chain respectively. The H(added) column lists the number of hydrogen atoms added and optimized by MolProbity. The Clashes column lists the number of clashes within the asymmetric unit, whereas Symm-Clashes lists symmetry-related clashes.

Mol	Chain	Non-H	H(model)	H(added)	Clashes	Symm-Clashes
1	AAA	1334	0	1281	48	0
1	BBB	1284	0	1234	22	0
2	AAA	43	0	30	3	0
2	BBB	43	0	30	0	0
3	AAA	12	0	16	3	0
4	AAA	21	0	29	15	0
5	AAA	11	0	3	5	0
5	BBB	11	0	2	7	0

Continued on next page...

Continued from previous page...

Mol	Chain	Non-H	H(model)	H(added)	Clashes	Symm-Clashes
6	AAA	4	0	6	5	0
7	AAA	5	0	0	0	0
7	BBB	10	0	0	0	0
8	AAA	105	0	0	9	0
8	BBB	97	0	0	7	0
All	All	2980	0	2631	74	0

The all-atom clashscore is defined as the number of clashes found per 1000 atoms (including hydrogen atoms). The all-atom clashscore for this structure is 13.

The worst 5 of 74 close contacts within the same asymmetric unit are listed below, sorted by their clash magnitude.

Atom-1	Atom-2	Interatomic distance (Å)	Clash overlap (Å)
5:AAA:204:4NC:H5	8:AAA:317:HOH:O	1.13	1.24
1:AAA:55[B]:HIS:CD2	2:AAA:201:HEM:O1A	1.93	1.21
5:AAA:204:4NC:C5	8:AAA:317:HOH:O	1.68	1.20
5:BBB:202:4NC:H5	8:BBB:326:HOH:O	0.98	1.15
1:AAA:69:ARG:NH1	4:AAA:206:PEG:H32	1.78	0.99

There are no symmetry-related clashes.

5.3 Torsion angles [i](#)

5.3.1 Protein backbone [i](#)

In the following table, the Percentiles column shows the percent Ramachandran outliers of the chain as a percentile score with respect to all X-ray entries followed by that with respect to entries of similar resolution.

The Analysed column shows the number of residues for which the backbone conformation was analysed, and the total number of residues.

Mol	Chain	Analysed	Favoured	Allowed	Outliers	Percentiles	
1	AAA	163/137 (119%)	159 (98%)	4 (2%)	0	100	100
1	BBB	160/137 (117%)	158 (99%)	1 (1%)	1 (1%)	22	6
All	All	323/274 (118%)	317 (98%)	5 (2%)	1 (0%)	30	17

All (1) Ramachandran outliers are listed below:

Mol	Chain	Res	Type
1	BBB	37	ASN

5.3.2 Protein sidechains [i](#)

In the following table, the Percentiles column shows the percent sidechain outliers of the chain as a percentile score with respect to all X-ray entries followed by that with respect to entries of similar resolution.

The Analysed column shows the number of residues for which the sidechain conformation was analysed, and the total number of residues.

Mol	Chain	Analysed	Rotameric	Outliers	Percentiles	
1	AAA	145/117 (124%)	138 (95%)	7 (5%)	21	3
1	BBB	142/117 (121%)	138 (97%)	4 (3%)	38	9
All	All	287/234 (123%)	276 (96%)	11 (4%)	41	5

5 of 11 residues with a non-rotameric sidechain are listed below:

Mol	Chain	Res	Type
1	BBB	30[A]	ASP
1	BBB	30[B]	ASP
1	BBB	47[B]	LYS
1	BBB	47[A]	LYS
1	AAA	37[B]	ASN

Sometimes sidechains can be flipped to improve hydrogen bonding and reduce clashes. There are no such sidechains identified.

5.3.3 RNA [i](#)

There are no RNA molecules in this entry.

5.4 Non-standard residues in protein, DNA, RNA chains [i](#)

There are no non-standard protein/DNA/RNA residues in this entry.

5.5 Carbohydrates [i](#)

There are no oligosaccharides in this entry.

5.6 Ligand geometry

13 ligands are modelled in this entry.

In the following table, the Counts columns list the number of bonds (or angles) for which Mogul statistics could be retrieved, the number of bonds (or angles) that are observed in the model and the number of bonds (or angles) that are defined in the Chemical Component Dictionary. The Link column lists molecule types, if any, to which the group is linked. The Z score for a bond length (or angle) is the number of standard deviations the observed value is removed from the expected value. A bond length (or angle) with $|Z| > 2$ is considered an outlier worth inspection. RMSZ is the root-mean-square of all Z scores of the bond lengths (or angles).

Mol	Type	Chain	Res	Link	Bond lengths			Bond angles		
					Counts	RMSZ	# Z > 2	Counts	RMSZ	# Z > 2
2	HEM	AAA	201	1,8	42,50,50	1.48	7 (16%)	46,82,82	1.77	12 (26%)
7	SO4	BBB	203	-	4,4,4	0.46	0	6,6,6	0.66	0
3	GOL	AAA	207	-	5,5,5	0.21	0	5,5,5	0.26	0
7	SO4	AAA	208	-	4,4,4	0.18	0	6,6,6	0.14	0
4	PEG	AAA	203[B]	-	6,6,6	0.14	0	5,5,5	0.21	0
5	4NC	BBB	202	-	11,11,11	0.71	1 (9%)	13,15,15	0.81	0
6	DMS	AAA	205	-	3,3,3	0.18	0	3,3,3	0.28	0
4	PEG	AAA	203[A]	-	6,6,6	0.43	0	5,5,5	0.37	0
7	SO4	BBB	204	-	4,4,4	0.76	0	6,6,6	0.26	0
2	HEM	BBB	201	1,8	42,50,50	1.47	8 (19%)	46,82,82	1.97	15 (32%)
5	4NC	AAA	204	-	11,11,11	0.65	0	13,15,15	0.71	0
4	PEG	AAA	206	-	6,6,6	0.70	0	5,5,5	0.61	0
3	GOL	AAA	202	-	5,5,5	0.28	0	5,5,5	0.93	0

In the following table, the Chirals column lists the number of chiral outliers, the number of chiral centers analysed, the number of these observed in the model and the number defined in the Chemical Component Dictionary. Similar counts are reported in the Torsion and Rings columns. '-' means no outliers of that kind were identified.

Mol	Type	Chain	Res	Link	Chirals	Torsions	Rings
2	HEM	AAA	201	1,8	-	0/12/54/54	-
3	GOL	AAA	207	-	-	2/4/4/4	-
4	PEG	AAA	203[B]	-	-	2/4/4/4	-
5	4NC	BBB	202	-	-	0/2/4/4	0/1/1/1
4	PEG	AAA	203[A]	-	-	3/4/4/4	-
2	HEM	BBB	201	1,8	-	4/12/54/54	-
5	4NC	AAA	204	-	-	0/2/4/4	0/1/1/1
4	PEG	AAA	206	-	-	4/4/4/4	-
3	GOL	AAA	202	-	-	2/4/4/4	-

The worst 5 of 16 bond length outliers are listed below:

Mol	Chain	Res	Type	Atoms	Z	Observed(Å)	Ideal(Å)
2	AAA	201	HEM	C1B-NB	-3.51	1.34	1.40
2	AAA	201	HEM	C4B-NB	-3.25	1.32	1.38
2	BBB	201	HEM	C1B-NB	-2.79	1.35	1.40
2	BBB	201	HEM	C4D-C3D	2.70	1.49	1.45
2	BBB	201	HEM	C4B-NB	-2.60	1.33	1.38

The worst 5 of 27 bond angle outliers are listed below:

Mol	Chain	Res	Type	Atoms	Z	Observed(°)	Ideal(°)
2	BBB	201	HEM	C4B-CHC-C1C	4.92	129.05	122.56
2	BBB	201	HEM	C3B-C4B-NB	-4.74	106.07	109.47
2	AAA	201	HEM	C1B-NB-C4B	4.05	110.00	105.21
2	BBB	201	HEM	C1B-NB-C4B	3.90	109.82	105.21
2	AAA	201	HEM	CHC-C4B-NB	3.59	128.30	124.44

There are no chirality outliers.

5 of 17 torsion outliers are listed below:

Mol	Chain	Res	Type	Atoms
3	AAA	207	GOL	O1-C1-C2-O2
3	AAA	207	GOL	O1-C1-C2-C3
4	AAA	203[B]	PEG	C4-C3-O2-C2
4	AAA	203[A]	PEG	C4-C3-O2-C2
4	AAA	203[A]	PEG	O1-C1-C2-O2

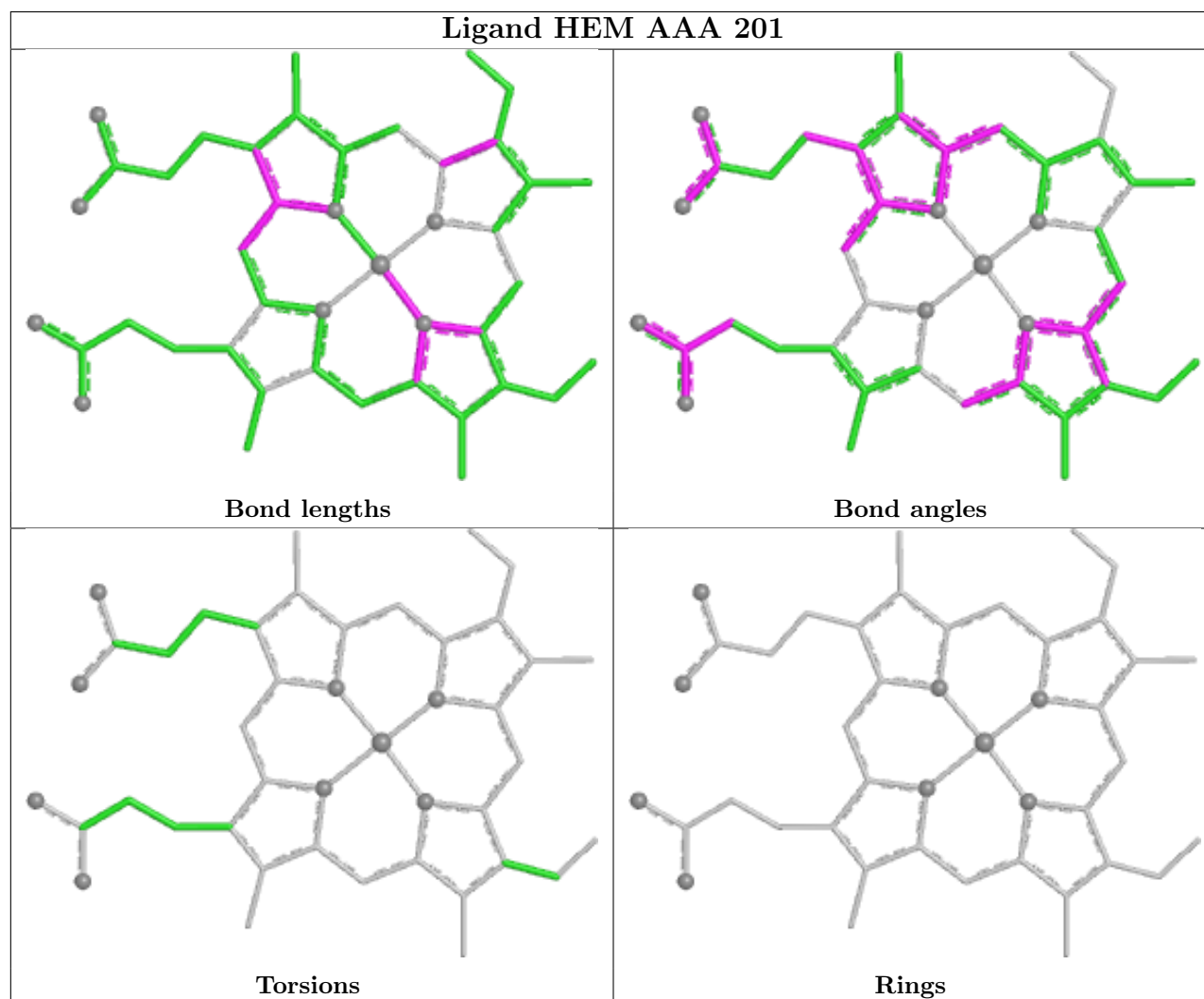
There are no ring outliers.

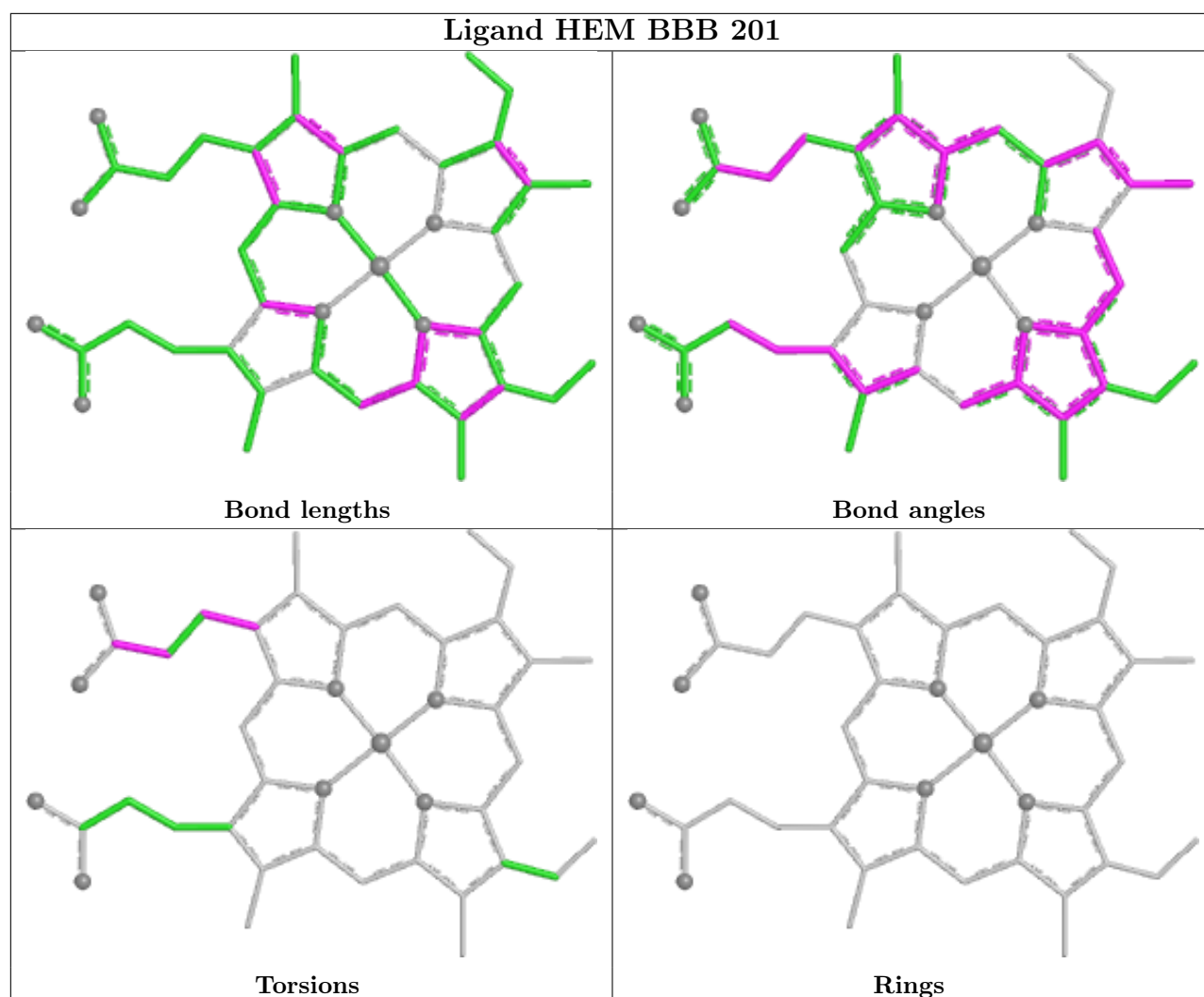
8 monomers are involved in 38 short contacts:

Mol	Chain	Res	Type	Clashes	Symm-Clashes
2	AAA	201	HEM	3	0
3	AAA	207	GOL	3	0
4	AAA	203[B]	PEG	1	0
5	BBB	202	4NC	7	0
6	AAA	205	DMS	5	0
4	AAA	203[A]	PEG	4	0
5	AAA	204	4NC	5	0
4	AAA	206	PEG	10	0

The following is a two-dimensional graphical depiction of Mogul quality analysis of bond lengths, bond angles, torsion angles, and ring geometry for all instances of the Ligand of Interest. In addition, ligands with molecular weight > 250 and outliers as shown on the validation Tables will

also be included. For torsion angles, if less than 5% of the Mogul distribution of torsion angles is within 10 degrees of the torsion angle in question, then that torsion angle is considered an outlier. Any bond that is central to one or more torsion angles identified as an outlier by Mogul will be highlighted in the graph. For rings, the root-mean-square deviation (RMSD) between the ring in question and similar rings identified by Mogul is calculated over all ring torsion angles. If the average RMSD is greater than 60 degrees and the minimal RMSD between the ring in question and any Mogul-identified rings is also greater than 60 degrees, then that ring is considered an outlier. The outliers are highlighted in purple. The color gray indicates Mogul did not find sufficient equivalents in the CSD to analyse the geometry.





5.7 Other polymers [i](#)

There are no such residues in this entry.

5.8 Polymer linkage issues [i](#)

There are no chain breaks in this entry.

6 Fit of model and data [i](#)

6.1 Protein, DNA and RNA chains [i](#)

In the following table, the column labelled ‘#RSRZ > 2’ contains the number (and percentage) of RSRZ outliers, followed by percent RSRZ outliers for the chain as percentile scores relative to all X-ray entries and entries of similar resolution. The OWAB column contains the minimum, median, 95th percentile and maximum values of the occupancy-weighted average B-factor per residue. The column labelled ‘Q < 0.9’ lists the number of (and percentage) of residues with an average occupancy less than 0.9.

Mol	Chain	Analysed	<RSRZ>	#RSRZ>2	OWAB(Å ²)	Q<0.9
1	AAA	137/137 (100%)	-1.07	0 100 100	5, 13, 29, 42	28 (20%)
1	BBB	137/137 (100%)	-1.25	0 100 100	4, 10, 26, 37	25 (18%)
All	All	274/274 (100%)	-1.16	0 100 100	4, 11, 26, 42	53 (19%)

There are no RSRZ outliers to report.

6.2 Non-standard residues in protein, DNA, RNA chains [i](#)

There are no non-standard protein/DNA/RNA residues in this entry.

6.3 Carbohydrates [i](#)

There are no monosaccharides in this entry.

6.4 Ligands [i](#)

In the following table, the Atoms column lists the number of modelled atoms in the group and the number defined in the chemical component dictionary. The B-factors column lists the minimum, median, 95th percentile and maximum values of B factors of atoms in the group. The column labelled ‘Q < 0.9’ lists the number of atoms with occupancy less than 0.9.

Mol	Type	Chain	Res	Atoms	RSCC	RSR	B-factors(Å ²)	Q<0.9
5	4NC	AAA	204	11/11	0.94	0.12	17,19,22,23	11
6	DMS	AAA	205	4/4	0.94	0.10	41,50,55,55	0
5	4NC	BBB	202	11/11	0.97	0.05	12,14,18,18	11
7	SO4	AAA	208	5/5	0.97	0.09	43,47,54,60	5
3	GOL	AAA	202	6/6	0.98	0.09	12,25,35,48	0
4	PEG	AAA	206	7/7	0.98	0.07	22,25,33,35	0
3	GOL	AAA	207	6/6	0.99	0.05	27,35,43,45	0

Continued on next page...

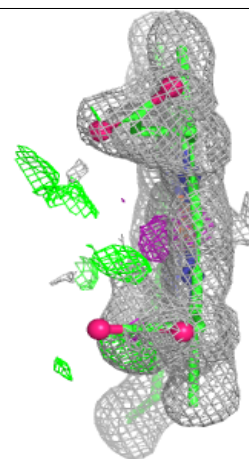
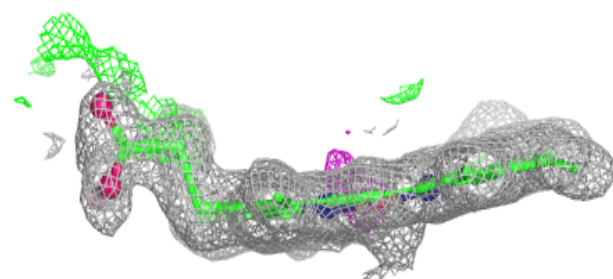
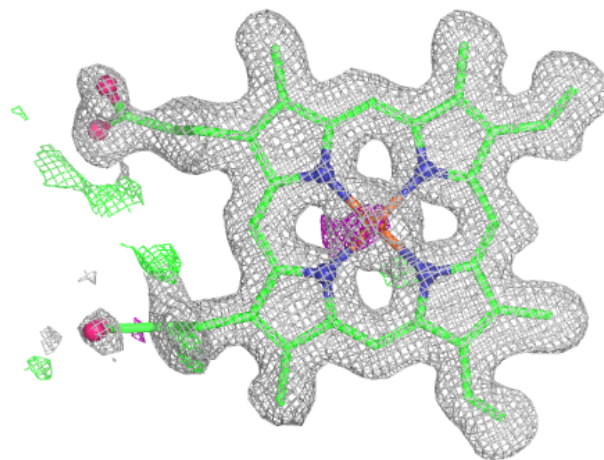
Continued from previous page...

Mol	Type	Chain	Res	Atoms	RSCC	RSR	B-factors(\AA^2)	Q<0.9
4	PEG	AAA	203[A]	7/7	0.99	0.05	15,19,21,22	7
4	PEG	AAA	203[B]	7/7	0.99	0.05	11,17,31,37	7
2	HEM	AAA	201	43/43	0.99	0.04	10,16,33,56	6
2	HEM	BBB	201	43/43	1.00	0.03	7,11,22,31	3
7	SO4	BBB	203	5/5	1.00	0.04	9,10,12,12	0
7	SO4	BBB	204	5/5	1.00	0.03	13,14,16,17	0

The following is a graphical depiction of the model fit to experimental electron density of all instances of the Ligand of Interest. In addition, ligands with molecular weight > 250 and outliers as shown on the geometry validation Tables will also be included. Each fit is shown from different orientation to approximate a three-dimensional view.

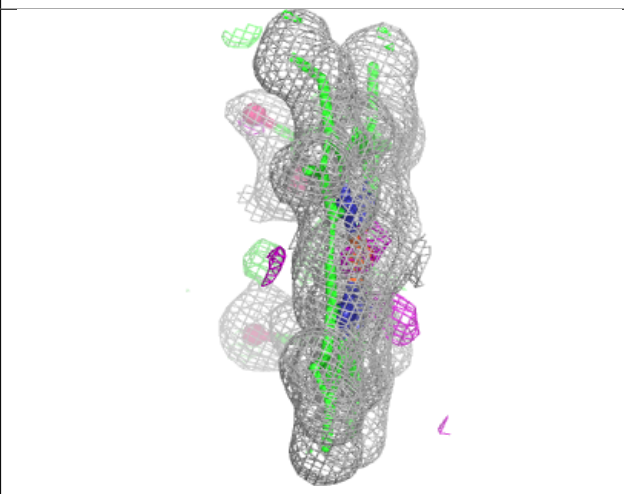
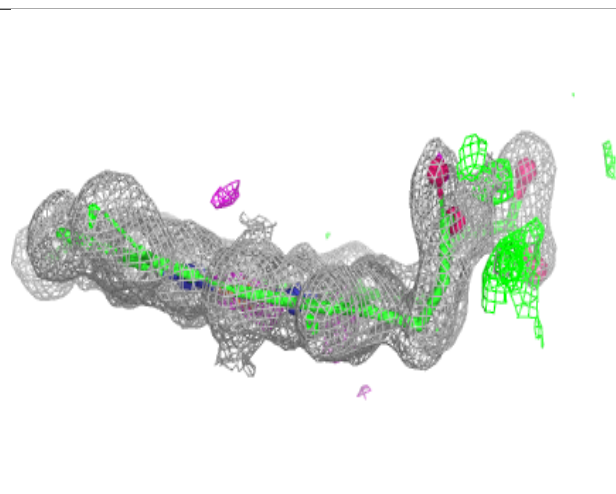
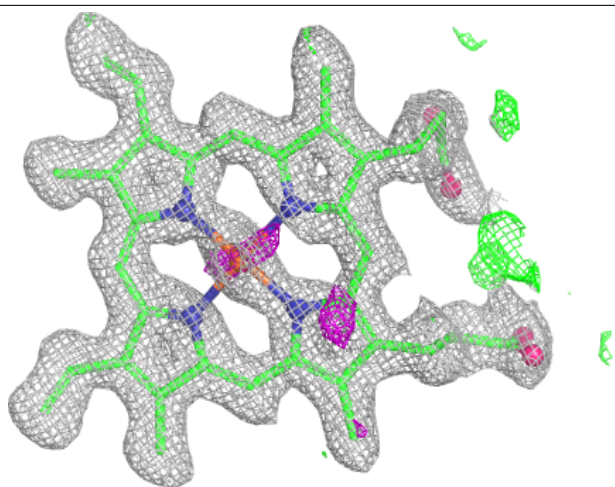
Electron density around HEM AAA 201:

2mF_o-DF_c (at 0.7 rmsd) in gray
mF_o-DF_c (at 3 rmsd) in purple (negative)
and green (positive)



Electron density around HEM BBB 201:

$2mF_o-DF_c$ (at 0.7 rmsd) in gray
 mF_o-DF_c (at 3 rmsd) in purple (negative)
and green (positive)



6.5 Other polymers [i](#)

There are no such residues in this entry.