



Full wwPDB EM Validation Report ⓘ

Jun 20, 2024 – 12:42 AM JST

PDB ID : 7W5W
EMDB ID : EMD-32322
Title : Cryo-EM structure of SoxS-dependent transcription activation complex with micF promoter DNA
Authors : Lin, W.; Feng, Y.
Deposited on : 2021-11-30
Resolution : 4.55 Å(reported)

This is a Full wwPDB EM Validation Report for a publicly released PDB entry.

We welcome your comments at validation@mail.wwpdb.org

A user guide is available at

<https://www.wwpdb.org/validation/2017/EMValidationReportHelp>
with specific help available everywhere you see the ⓘ symbol.

The types of validation reports are described at

<http://www.wwpdb.org/validation/2017/FAQs#types>.

The following versions of software and data (see [references ⓘ](#)) were used in the production of this report:

EMDB validation analysis : 0.0.1.dev92
MolProbity : 4.02b-467
Percentile statistics : 20191225.v01 (using entries in the PDB archive December 25th 2019)
MapQ : 1.9.13
Ideal geometry (proteins) : Engh & Huber (2001)
Ideal geometry (DNA, RNA) : Parkinson et al. (1996)
Validation Pipeline (wwPDB-VP) : 2.37.1

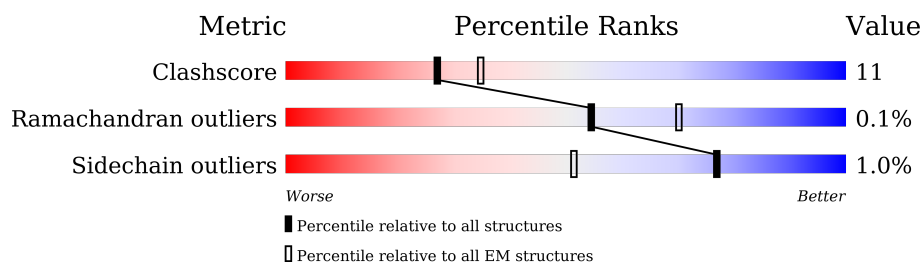
1 Overall quality at a glance

The following experimental techniques were used to determine the structure:

ELECTRON MICROSCOPY

The reported resolution of this entry is 4.55 Å.

Percentile scores (ranging between 0-100) for global validation metrics of the entry are shown in the following graphic. The table shows the number of entries on which the scores are based.




Metric	Whole archive (#Entries)	EM structures (#Entries)
Clashscore	158937	4297
Ramachandran outliers	154571	4023
Sidechain outliers	154315	3826

The table below summarises the geometric issues observed across the polymeric chains and their fit to the map. The red, orange, yellow and green segments of the bar indicate the fraction of residues that contain outliers for ≥ 3 , 2, 1 and 0 types of geometric quality criteria respectively. A grey segment represents the fraction of residues that are not modelled. The numeric value for each fraction is indicated below the corresponding segment, with a dot representing fractions $\leq 5\%$. The upper red bar (where present) indicates the fraction of residues that have poor fit to the EM map (all-atom inclusion $< 40\%$). The numeric value is given above the bar.

Mol	Chain	Length	Quality of chain
1	A	329	76% 18% 5%
1	B	329	57% 11% 31%
2	C	1342	82% 17% 1%
3	D	1407	76% 19% 5%
4	E	91	77% 10% 13%
5	F	613	65% 14% 22%
6	1	70	37% 53% 10%
7	2	70	39% 51% 10%

Continued on next page...

Continued from previous page...

Mol	Chain	Length	Quality of chain
8	J	107	 A horizontal bar chart showing the quality of chain J. The bar is divided into two segments: a green segment representing 69% and a yellow segment representing 31%. A small red flag icon is positioned at the start of the green segment. <div>69%31%</div>

2 Entry composition [i](#)

There are 10 unique types of molecules in this entry. The entry contains 33053 atoms, of which 0 are hydrogens and 0 are deuteriums.

In the tables below, the AltConf column contains the number of residues with at least one atom in alternate conformation and the Trace column contains the number of residues modelled with at most 2 atoms.

- Molecule 1 is a protein called DNA-directed RNA polymerase subunit alpha.

Mol	Chain	Residues	Atoms					AltConf	Trace
1	A	311	Total	C	N	O	S	0	0
			2418	1512	425	473	8		
1	B	228	Total	C	N	O	S	0	0
			1767	1100	312	349	6		

- Molecule 2 is a protein called DNA-directed RNA polymerase subunit beta.

Mol	Chain	Residues	Atoms					AltConf	Trace
2	C	1336	Total	C	N	O	S	0	0
			10528	6605	1831	2049	43		

There is a discrepancy between the modelled and reference sequences:

Chain	Residue	Modelled	Actual	Comment	Reference
C	516	VAL	ASP	engineered mutation	UNP P0A8V2

- Molecule 3 is a protein called DNA-directed RNA polymerase subunit beta'.

Mol	Chain	Residues	Atoms					AltConf	Trace
3	D	1335	Total	C	N	O	S	0	0
			10344	6495	1846	1954	49		

- Molecule 4 is a protein called DNA-directed RNA polymerase subunit omega.

Mol	Chain	Residues	Atoms					AltConf	Trace
4	E	79	Total	C	N	O	S	0	0
			627	382	118	126	1		

- Molecule 5 is a protein called RNA polymerase sigma factor RpoD.

Mol	Chain	Residues	Atoms					AltConf	Trace
5	F	481	Total	C	N	O	S	0	0
			3861	2408	689	741	23		

- Molecule 6 is a DNA chain called micF promoter DNA forward strand.

Mol	Chain	Residues	Atoms					AltConf	Trace
6	1	63	Total	C	N	O	P	0	0
			1288	614	247	365	62		

- Molecule 7 is a DNA chain called micF promoter DNA reverse strand.

Mol	Chain	Residues	Atoms					AltConf	Trace
7	2	63	Total	C	N	O	P	0	0
			1305	622	233	387	63		

- Molecule 8 is a protein called Regulatory protein SoxS.

Mol	Chain	Residues	Atoms					AltConf	Trace
8	J	107	Total	C	N	O	S	0	0
			912	579	170	160	3		

- Molecule 9 is ZINC ION (three-letter code: ZN) (formula: Zn) (labeled as "Ligand of Interest" by depositor).

Mol	Chain	Residues	Atoms		AltConf
9	D	2	Total	Zn	0
			2	2	

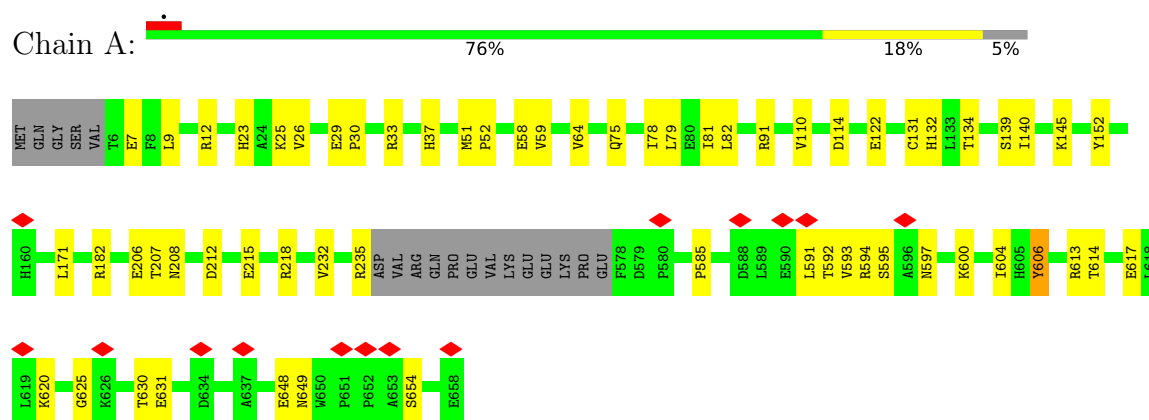
- Molecule 10 is MAGNESIUM ION (three-letter code: MG) (formula: Mg) (labeled as "Ligand of Interest" by depositor).

Mol	Chain	Residues	Atoms		AltConf
10	D	1	Total	Mg	0
			1	1	

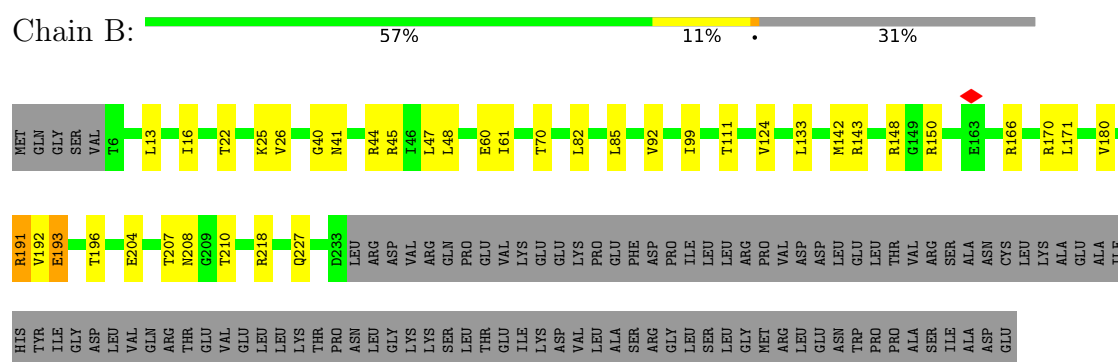
3 Residue-property plots [i](#)

These plots are drawn for all protein, RNA, DNA and oligosaccharide chains in the entry. The first graphic for a chain summarises the proportions of the various outlier classes displayed in the second graphic. The second graphic shows the sequence view annotated by issues in geometry and atom inclusion in map density. Residues are color-coded according to the number of geometric quality criteria for which they contain at least one outlier: green = 0, yellow = 1, orange = 2 and red = 3 or more. A red diamond above a residue indicates a poor fit to the EM map for this residue (all-atom inclusion < 40%). Stretches of 2 or more consecutive residues without any outlier are shown as a green connector. Residues present in the sample, but not in the model, are shown in grey.

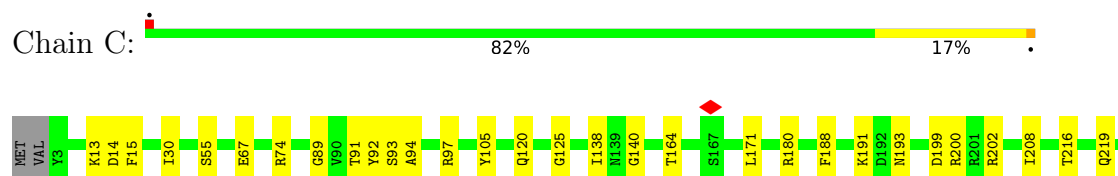
- Molecule 1: DNA-directed RNA polymerase subunit alpha

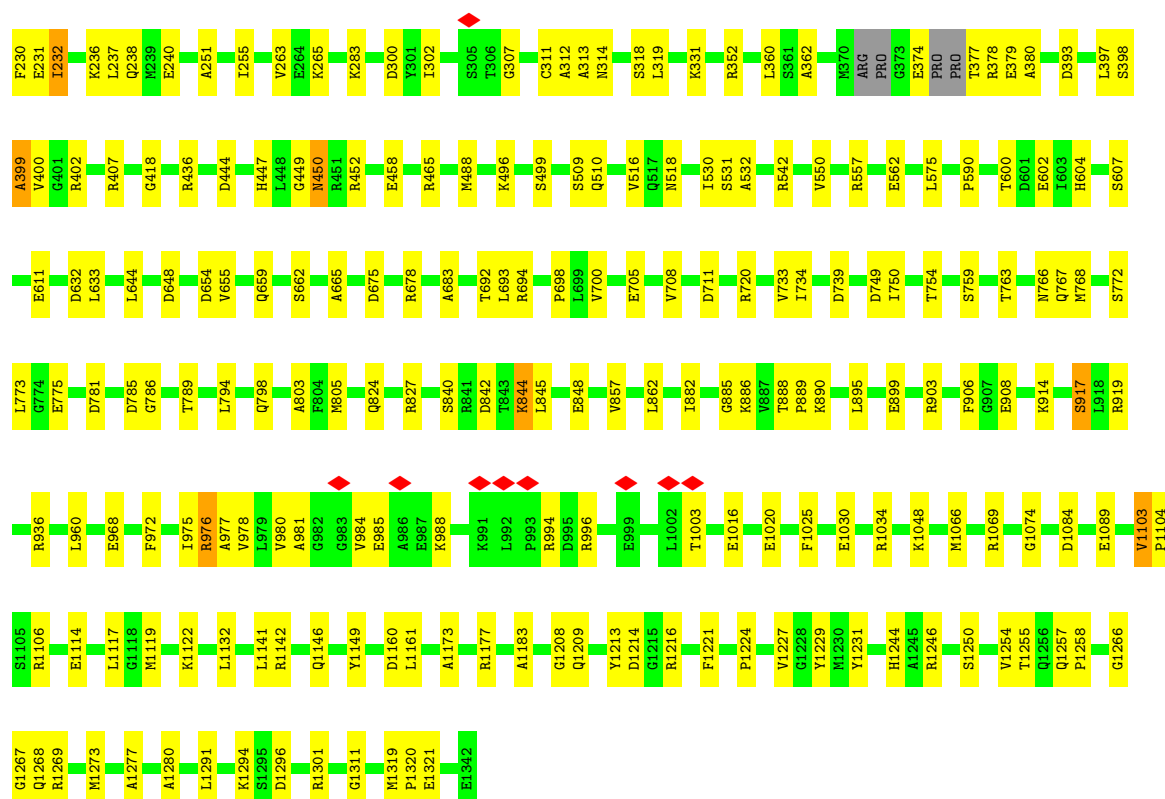


- Molecule 1: DNA-directed RNA polymerase subunit alpha

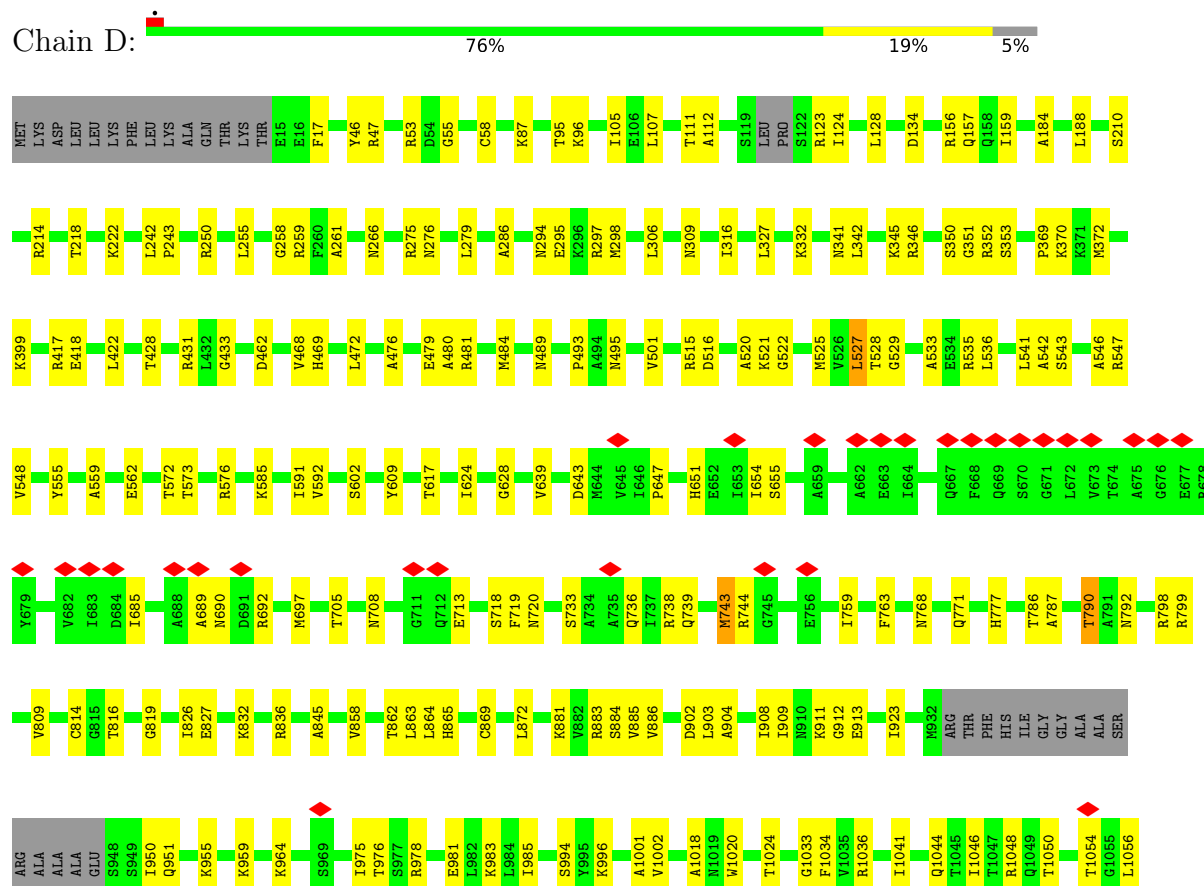


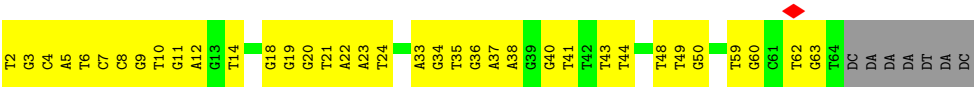
- Molecule 2: DNA-directed RNA polymerase subunit beta



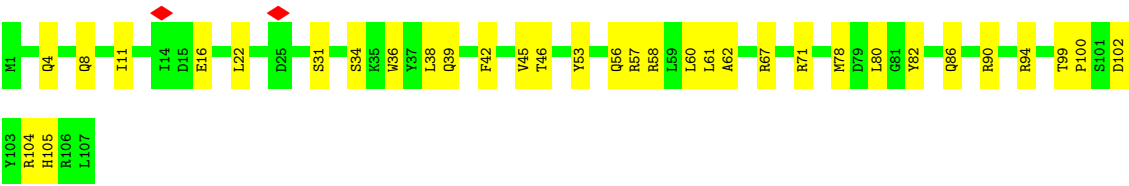


• Molecule 3: DNA-directed RNA polymerase subunit beta'





● Molecule 8: Regulatory protein SoxS



4 Experimental information

Property	Value	Source
EM reconstruction method	SINGLE PARTICLE	Depositor
Imposed symmetry	POINT, Not provided	
Number of particles used	89000	Depositor
Resolution determination method	FSC 0.143 CUT-OFF	Depositor
CTF correction method	NONE	Depositor
Microscope	FEI TITAN KRIOS	Depositor
Voltage (kV)	300	Depositor
Electron dose ($e^-/\text{\AA}^2$)	52	Depositor
Minimum defocus (nm)	Not provided	
Maximum defocus (nm)	Not provided	
Magnification	Not provided	
Image detector	GATAN K3 (6k x 4k)	Depositor
Maximum map value	0.068	Depositor
Minimum map value	-0.040	Depositor
Average map value	0.000	Depositor
Map value standard deviation	0.004	Depositor
Recommended contour level	0.005	Depositor
Map size (\AA)	264.0, 264.0, 264.0	wwPDB
Map dimensions	240, 240, 240	wwPDB
Map angles ($^\circ$)	90.0, 90.0, 90.0	wwPDB
Pixel spacing (\AA)	1.1, 1.1, 1.1	Depositor

5 Model quality [i](#)

5.1 Standard geometry [i](#)

Bond lengths and bond angles in the following residue types are not validated in this section: ZN, MG

The Z score for a bond length (or angle) is the number of standard deviations the observed value is removed from the expected value. A bond length (or angle) with $|Z| > 5$ is considered an outlier worth inspection. RMSZ is the root-mean-square of all Z scores of the bond lengths (or angles).

Mol	Chain	Bond lengths		Bond angles	
		RMSZ	# Z >5	RMSZ	# Z >5
1	A	0.34	0/2449	0.59	0/3318
1	B	0.33	0/1789	0.55	0/2425
2	C	0.38	0/10692	0.57	0/14421
3	D	0.36	0/10497	0.58	0/14171
4	E	0.32	0/629	0.52	0/847
5	F	0.30	0/3910	0.57	0/5256
6	1	0.73	0/1448	0.93	0/2231
7	2	0.73	0/1463	0.95	0/2261
8	J	0.28	0/932	0.53	0/1256
All	All	0.40	0/33809	0.62	0/46186

There are no bond length outliers.

There are no bond angle outliers.

There are no chirality outliers.

There are no planarity outliers.

5.2 Too-close contacts [i](#)

In the following table, the Non-H and H(model) columns list the number of non-hydrogen atoms and hydrogen atoms in the chain respectively. The H(added) column lists the number of hydrogen atoms added and optimized by MolProbity. The Clashes column lists the number of clashes within the asymmetric unit, whereas Symm-Clashes lists symmetry-related clashes.

Mol	Chain	Non-H	H(model)	H(added)	Clashes	Symm-Clashes
1	A	2418	0	2467	51	0
1	B	1767	0	1789	30	0
2	C	10528	0	10531	165	0
3	D	10344	0	10527	186	0

Continued on next page...

Continued from previous page...

Mol	Chain	Non-H	H(model)	H(added)	Clashes	Symm-Clashes
4	E	627	0	634	7	0
5	F	3861	0	3871	67	0
6	1	1288	0	707	117	0
7	2	1305	0	716	146	0
8	J	912	0	917	31	0
9	D	2	0	0	0	0
10	D	1	0	0	0	0
All	All	33053	0	32159	695	0

The all-atom clashscore is defined as the number of clashes found per 1000 atoms (including hydrogen atoms). The all-atom clashscore for this structure is 11.

All (695) close contacts within the same asymmetric unit are listed below, sorted by their clash magnitude.

Atom-1	Atom-2	Interatomic distance (Å)	Clash overlap (Å)
7:2:40:DG:C8	7:2:41:DT:H71	1.78	1.18
7:2:22:DA:H2''	7:2:23:DA:OP1	1.44	1.17
6:1:86:DT:N3	6:1:87:DG:C5	2.17	1.12
6:1:73:DG:N7	6:1:74:DA:N1	1.98	1.11
3:D:520:ALA:HB3	3:D:546:ALA:HB2	1.33	1.07
7:2:37:DA:C2	7:2:38:DA:C5	2.41	1.07
2:C:975:ILE:HD12	2:C:994:ARG:HH22	1.14	1.05
6:1:86:DT:C2	6:1:87:DG:C8	2.43	1.05
7:2:23:DA:H8	7:2:24:DT:H72	1.17	1.05
1:A:591:LEU:HD21	1:A:631:GLU:HB3	1.37	1.03
7:2:20:DG:H2''	7:2:21:DT:H71	1.38	1.01
1:A:593:VAL:HG12	8:J:16:GLU:HG2	1.41	1.01
6:1:84:DG:C8	6:1:85:DA:N7	2.29	1.00
2:C:377:THR:HG23	2:C:380:ALA:H	1.21	1.00
3:D:527:LEU:HD12	3:D:533:ALA:HA	1.44	1.00
7:2:40:DG:C4	7:2:41:DT:C6	2.51	0.98
1:B:193:GLU:N	1:B:193:GLU:OE2	1.97	0.98
7:2:37:DA:N3	7:2:38:DA:C8	2.31	0.98
7:2:37:DA:C2	7:2:38:DA:C4	2.52	0.98
6:1:83:DG:N2	7:2:9:DG:C2	2.32	0.97
1:A:591:LEU:HG	1:A:592:THR:H	1.30	0.96
2:C:374:GLU:N	2:C:374:GLU:OE2	1.99	0.94
7:2:35:DT:H6	7:2:35:DT:H5''	1.32	0.94
6:1:84:DG:N2	7:2:8:DC:C2	2.36	0.94
7:2:36:DG:C6	7:2:37:DA:N6	2.36	0.93
7:2:21:DT:H71	7:2:21:DT:OP2	1.68	0.93

Continued on next page...

Continued from previous page...

Atom-1	Atom-2	Interatomic distance (Å)	Clash overlap (Å)
1:B:191:ARG:HG2	1:B:191:ARG:HH11	1.34	0.92
6:1:56:DA:C2	7:2:35:DT:O4	2.23	0.91
7:2:36:DG:C5	7:2:37:DA:N6	2.39	0.91
5:F:166:VAL:O	5:F:167:ASP:HB3	1.70	0.91
6:1:84:DG:N7	6:1:85:DA:N7	2.20	0.89
7:2:2:DT:C6	7:2:3:DG:N7	2.41	0.88
7:2:33:DA:C2	7:2:34:DG:C2	2.61	0.88
7:2:23:DA:C8	7:2:24:DT:H72	2.08	0.88
2:C:977:ALA:O	2:C:980:VAL:HG12	1.74	0.88
6:1:84:DG:N2	7:2:8:DC:N3	2.21	0.87
1:A:593:VAL:HG12	8:J:16:GLU:CG	2.04	0.86
6:1:86:DT:C2	6:1:87:DG:N7	2.43	0.86
6:1:84:DG:O6	6:1:85:DA:N6	2.09	0.86
7:2:40:DG:C8	7:2:41:DT:C7	2.59	0.86
1:A:591:LEU:HD21	1:A:631:GLU:CB	2.05	0.86
7:2:21:DT:OP2	7:2:21:DT:C7	2.24	0.85
2:C:976:ARG:NH2	2:C:984:VAL:HG21	1.92	0.85
6:1:73:DG:C8	6:1:74:DA:C2	2.64	0.85
6:1:43:DA:C2	7:2:49:DT:N3	2.46	0.84
3:D:521:LYS:O	3:D:542:ALA:CB	2.26	0.83
7:2:43:DT:H4'	7:2:44:DT:OP1	1.78	0.83
2:C:975:ILE:HD12	2:C:994:ARG:NH2	1.93	0.82
6:1:73:DG:N7	6:1:74:DA:C2	2.47	0.82
6:1:81:DA:C2	7:2:10:DT:N3	2.47	0.82
6:1:81:DA:N1	7:2:10:DT:C4	2.47	0.82
2:C:975:ILE:O	2:C:978:VAL:HG12	1.80	0.81
7:2:8:DC:H2''	7:2:9:DG:C8	2.16	0.81
6:1:84:DG:C8	6:1:85:DA:C8	2.69	0.80
7:2:20:DG:H5''	7:2:20:DG:H8	1.47	0.79
7:2:35:DT:H5''	7:2:35:DT:C6	2.17	0.79
7:2:40:DG:C5	7:2:41:DT:C5	2.70	0.79
6:1:83:DG:N2	7:2:9:DG:N3	2.31	0.78
1:A:593:VAL:HG12	8:J:16:GLU:CB	2.14	0.78
5:F:98:VAL:CB	6:1:72:DG:H21	1.97	0.78
5:F:166:VAL:HA	5:F:262:VAL:HG12	1.64	0.78
6:1:81:DA:C6	7:2:9:DG:C6	2.72	0.77
7:2:37:DA:H2	7:2:38:DA:C4	1.99	0.77
3:D:525:MET:O	3:D:548:VAL:CB	2.33	0.77
7:2:20:DG:H5''	7:2:20:DG:C8	2.20	0.77
1:B:191:ARG:HG2	1:B:191:ARG:NH1	2.00	0.76
3:D:521:LYS:O	3:D:542:ALA:HB1	1.83	0.76

Continued on next page...

Continued from previous page...

Atom-1	Atom-2	Interatomic distance (Å)	Clash overlap (Å)
6:1:86:DT:O4	6:1:87:DG:O6	2.04	0.76
1:A:591:LEU:CD2	1:A:631:GLU:HB3	2.16	0.76
6:1:86:DT:C2	6:1:87:DG:C5	2.74	0.75
6:1:80:DC:O2	7:2:11:DG:N1	2.20	0.75
7:2:43:DT:C5	7:2:44:DT:C4	2.75	0.75
2:C:377:THR:HG22	2:C:380:ALA:CB	2.18	0.74
6:1:84:DG:C6	6:1:85:DA:N6	2.55	0.74
6:1:86:DT:N3	6:1:87:DG:N7	2.34	0.74
3:D:1179:PRO:HG2	3:D:1183:SER:O	1.88	0.74
3:D:1179:PRO:CD	3:D:1184:ASP:HA	2.18	0.74
1:A:591:LEU:HG	1:A:592:THR:N	2.02	0.73
7:2:40:DG:N7	7:2:41:DT:C7	2.52	0.73
6:1:51:DC:H1'	6:1:52:DC:H5'	1.69	0.73
6:1:58:DT:C2	7:2:34:DG:N2	2.57	0.72
6:1:86:DT:O2	6:1:87:DG:C8	2.40	0.72
6:1:81:DA:N1	7:2:10:DT:O4	2.22	0.72
2:C:377:THR:HG22	2:C:380:ALA:HB3	1.71	0.72
6:1:86:DT:C4	6:1:87:DG:C6	2.79	0.71
5:F:164:GLY:O	5:F:262:VAL:HB	1.90	0.70
6:1:43:DA:H2	7:2:49:DT:N3	1.87	0.70
6:1:86:DT:C4	7:2:5:DA:N1	2.59	0.70
6:1:86:DT:O2	6:1:87:DG:N9	2.24	0.70
7:2:2:DT:N1	7:2:3:DG:C8	2.60	0.70
5:F:161:LEU:O	5:F:164:GLY:CA	2.39	0.70
6:1:86:DT:N3	6:1:87:DG:C6	2.58	0.70
6:1:56:DA:N6	7:2:34:DG:O6	2.25	0.70
6:1:83:DG:C2	7:2:9:DG:C2	2.80	0.70
2:C:200:ARG:HB2	6:1:79:DT:H3	1.57	0.69
3:D:521:LYS:O	3:D:542:ALA:HB2	1.92	0.69
5:F:166:VAL:O	5:F:167:ASP:CB	2.40	0.69
7:2:2:DT:H1'	7:2:3:DG:C8	2.28	0.69
7:2:35:DT:H2''	7:2:36:DG:O5'	1.93	0.69
2:C:1254:VAL:HG23	2:C:1255:THR:HG23	1.74	0.69
5:F:505:ILE:CG2	7:2:21:DT:C7	2.71	0.69
5:F:596:ARG:HD2	5:F:599:ARG:HE	1.57	0.69
1:A:58:GLU:HB3	1:A:145:LYS:HB3	1.75	0.68
1:A:591:LEU:CG	1:A:592:THR:H	2.03	0.68
7:2:21:DT:OP2	7:2:21:DT:C6	2.46	0.68
7:2:40:DG:N3	7:2:41:DT:O4'	2.26	0.68
6:1:81:DA:H2	7:2:10:DT:H3	1.32	0.68
2:C:377:THR:CG2	2:C:380:ALA:H	2.01	0.68

Continued on next page...

Continued from previous page...

Atom-1	Atom-2	Interatomic distance (Å)	Clash overlap (Å)
6:1:58:DT:O2	7:2:34:DG:N2	2.27	0.68
2:C:377:THR:HG23	2:C:380:ALA:N	2.04	0.67
7:2:20:DG:H8	7:2:20:DG:C5'	2.06	0.67
1:A:591:LEU:HD11	1:A:631:GLU:HB3	1.77	0.67
2:C:360:LEU:HD11	2:C:378:ARG:HD2	1.75	0.67
1:A:182:ARG:HB3	1:A:206:GLU:HB3	1.77	0.67
5:F:505:ILE:HG23	7:2:21:DT:H72	1.76	0.67
7:2:43:DT:C4	7:2:44:DT:N3	2.63	0.67
7:2:21:DT:OP2	7:2:21:DT:H6	1.78	0.67
2:C:633:LEU:HD12	2:C:644:LEU:HB3	1.76	0.67
3:D:816:THR:H	3:D:883:ARG:HH22	1.44	0.66
7:2:33:DA:N1	7:2:34:DG:C2	2.64	0.66
7:2:50:DG:N7	8:J:90:ARG:NH1	2.43	0.66
3:D:790:THR:HB	7:2:12:DA:C6	2.31	0.66
5:F:161:LEU:O	5:F:164:GLY:N	2.29	0.66
3:D:827:GLU:HG2	3:D:994:SER:HB3	1.78	0.65
7:2:20:DG:H2''	7:2:21:DT:C7	2.22	0.65
2:C:590:PRO:HB2	2:C:655:VAL:HG21	1.79	0.64
3:D:643:ASP:HB3	3:D:720:ASN:HD21	1.62	0.64
7:2:35:DT:H2''	7:2:36:DG:O4'	1.98	0.64
7:2:43:DT:C2	7:2:44:DT:C2	2.85	0.64
1:B:92:VAL:HG13	1:B:148:ARG:HH21	1.63	0.64
2:C:516:VAL:HG23	2:C:516:VAL:O	1.98	0.64
7:2:23:DA:H2'	7:2:24:DT:H72	1.80	0.64
7:2:2:DT:C1'	7:2:3:DG:C8	2.80	0.64
1:A:33:ARG:HH21	1:B:150:ARG:HG3	1.63	0.64
2:C:985:GLU:HB3	2:C:988:LYS:HB3	1.81	0.64
6:1:51:DC:C4	6:1:52:DC:C5	2.86	0.64
7:2:37:DA:C2	7:2:38:DA:C8	2.86	0.63
1:A:37:HIS:HB2	1:B:45:ARG:HH22	1.62	0.63
2:C:255:ILE:HB	2:C:263:VAL:HB	1.81	0.63
4:E:22:VAL:HG12	4:E:25:ARG:HH22	1.63	0.63
7:2:20:DG:H2''	7:2:21:DT:OP2	1.98	0.63
3:D:520:ALA:CB	3:D:546:ALA:HB2	2.21	0.63
6:1:58:DT:N3	7:2:34:DG:N2	2.47	0.63
6:1:53:DT:H3'	6:1:54:DT:H71	1.82	0.62
3:D:279:LEU:HD13	3:D:295:GLU:HG2	1.82	0.62
7:2:23:DA:H2'	7:2:24:DT:C7	2.29	0.62
2:C:976:ARG:HH22	2:C:984:VAL:HG21	1.62	0.62
1:B:99:ILE:HD11	1:B:143:ARG:HB3	1.81	0.62
1:A:593:VAL:HG12	8:J:16:GLU:HB3	1.83	0.61

Continued on next page...

Continued from previous page...

Atom-1	Atom-2	Interatomic distance (Å)	Clash overlap (Å)
6:1:86:DT:C4	6:1:87:DG:C5	2.87	0.61
6:1:84:DG:C6	6:1:85:DA:C6	2.88	0.61
7:2:8:DC:H2''	7:2:9:DG:H8	1.66	0.61
3:D:1179:PRO:HD2	3:D:1184:ASP:CB	2.31	0.61
3:D:1179:PRO:HD2	3:D:1184:ASP:HA	1.83	0.61
6:1:51:DC:N3	6:1:52:DC:C5	2.69	0.61
1:B:166:ARG:HD2	1:B:170:ARG:HH21	1.65	0.61
3:D:515:ARG:NH2	3:D:718:SER:O	2.34	0.61
3:D:294:ASN:HD22	5:F:406:GLN:HE21	1.49	0.60
2:C:91:THR:HG22	2:C:138:ILE:HA	1.84	0.60
7:2:40:DG:N3	7:2:41:DT:C6	2.69	0.60
3:D:814:CYS:SG	3:D:883:ARG:NH2	2.75	0.60
7:2:37:DA:C2	7:2:38:DA:N7	2.69	0.60
5:F:119:ILE:HG23	5:F:375:ALA:HB1	1.83	0.60
6:1:86:DT:O4	6:1:87:DG:C6	2.55	0.60
7:2:2:DT:C6	7:2:3:DG:C8	2.90	0.60
3:D:527:LEU:HD12	3:D:533:ALA:CA	2.27	0.59
7:2:2:DT:C5	7:2:3:DG:N7	2.70	0.59
1:A:79:LEU:HD11	2:C:693:LEU:HD11	1.85	0.59
2:C:314:ASN:O	2:C:352:ARG:NH1	2.35	0.59
6:1:80:DC:N3	7:2:11:DG:O6	2.35	0.59
2:C:848:GLU:HG2	2:C:888:THR:HG22	1.84	0.59
3:D:1368:ASP:OD1	3:D:1371:ARG:NH1	2.36	0.59
6:1:84:DG:C5	6:1:85:DA:C5	2.90	0.59
8:J:71:ARG:O	8:J:104:ARG:NH2	2.35	0.59
3:D:884:SER:OG	3:D:885:VAL:N	2.35	0.58
1:B:41:ASN:ND2	2:C:1216:ARG:O	2.36	0.58
5:F:98:VAL:CB	6:1:72:DG:N2	2.66	0.58
7:2:40:DG:C5	7:2:41:DT:C6	2.91	0.58
3:D:527:LEU:CD1	3:D:533:ALA:HA	2.28	0.58
6:1:73:DG:C8	6:1:74:DA:N1	2.65	0.58
1:A:64:VAL:HG11	1:A:171:LEU:HD11	1.85	0.58
2:C:1294:LYS:HE2	3:D:472:LEU:HD23	1.85	0.58
6:1:72:DG:H2''	6:1:73:DG:O4'	2.02	0.58
7:2:43:DT:C5	7:2:44:DT:O4	2.57	0.58
3:D:105:ILE:HD11	3:D:242:LEU:HD23	1.86	0.58
5:F:166:VAL:CA	5:F:262:VAL:HG12	2.33	0.58
2:C:180:ARG:NH2	2:C:393:ASP:O	2.37	0.58
7:2:34:DG:H2''	7:2:35:DT:OP2	2.03	0.58
4:E:25:ARG:HE	4:E:64:LEU:HD22	1.68	0.58
6:1:73:DG:N7	6:1:74:DA:C6	2.70	0.57

Continued on next page...

Continued from previous page...

Atom-1	Atom-2	Interatomic distance (Å)	Clash overlap (Å)
3:D:845:ALA:HB3	3:D:881:LYS:HB3	1.84	0.57
2:C:886:LYS:H	2:C:917:SER:HB2	1.69	0.57
3:D:47:ARG:NH2	6:1:60:DG:OP1	2.37	0.57
3:D:902:ASP:HB2	3:D:909:ILE:HB	1.85	0.57
7:2:37:DA:N3	7:2:38:DA:N7	2.52	0.57
2:C:199:ASP:HB3	6:1:78:DG:H22	1.68	0.57
3:D:809:VAL:HG23	3:D:912:GLY:H	1.70	0.57
3:D:826:ILE:HG22	3:D:832:LYS:H	1.70	0.57
5:F:160:ASP:O	5:F:163:THR:HB	2.05	0.57
6:1:54:DT:C4	6:1:55:DC:C5	2.92	0.57
7:2:36:DG:H2'	7:2:37:DA:C8	2.40	0.57
3:D:493:PRO:HB3	3:D:904:ALA:HB2	1.85	0.57
7:2:59:DT:H72	8:J:39:GLN:HB3	1.86	0.57
2:C:360:LEU:HD21	2:C:378:ARG:HD3	1.86	0.57
3:D:428:THR:HG23	3:D:433:GLY:HA3	1.87	0.57
7:2:33:DA:N1	7:2:34:DG:N1	2.53	0.57
3:D:250:ARG:O	3:D:266:ASN:ND2	2.38	0.56
3:D:259:ARG:HG3	5:F:502:LYS:HG2	1.87	0.56
7:2:20:DG:C8	7:2:20:DG:C5'	2.85	0.56
7:2:23:DA:H2''	7:2:24:DT:H5'	1.87	0.56
2:C:1142:ARG:NH1	2:C:1161:LEU:O	2.38	0.56
6:1:84:DG:H2'	6:1:85:DA:C8	2.40	0.56
7:2:20:DG:C2'	7:2:21:DT:H71	2.24	0.56
2:C:360:LEU:HD11	2:C:378:ARG:CD	2.34	0.56
3:D:572:THR:OG1	3:D:573:THR:N	2.39	0.56
6:1:81:DA:C6	7:2:9:DG:O6	2.59	0.56
2:C:318:SER:OG	2:C:319:LEU:N	2.38	0.56
2:C:557:ARG:NH2	2:C:607:SER:O	2.39	0.56
8:J:53:TYR:HA	8:J:56:GLN:HB2	1.88	0.56
7:2:43:DT:C7	7:2:44:DT:O4	2.54	0.56
3:D:17:PHE:O	3:D:1355:ARG:NH1	2.39	0.56
1:A:606:TYR:OH	1:A:654:SER:O	2.24	0.56
3:D:286:ALA:O	5:F:373:ARG:NH1	2.39	0.56
6:1:77:DT:H73	6:1:77:DT:OP2	2.06	0.56
2:C:633:LEU:HB3	2:C:644:LEU:HD22	1.87	0.55
8:J:67:ARG:NH1	8:J:104:ARG:O	2.38	0.55
2:C:89:GLY:HA2	2:C:140:GLY:HA3	1.86	0.55
2:C:1311:GLY:O	4:E:31:GLN:NE2	2.39	0.55
3:D:156:ARG:HG2	3:D:157:GLN:HG3	1.88	0.55
3:D:959:LYS:HD2	3:D:985:ILE:HG13	1.88	0.55
3:D:1089:LEU:HD13	3:D:1094:ASP:HA	1.88	0.55

Continued on next page...

Continued from previous page...

Atom-1	Atom-2	Interatomic distance (Å)	Clash overlap (Å)
3:D:1179:PRO:HD2	3:D:1184:ASP:CA	2.36	0.55
4:E:4:VAL:HG13	4:E:5:THR:HG23	1.88	0.55
8:J:8:GLN:HA	8:J:11:ILE:HD12	1.87	0.55
3:D:1262:ARG:O	3:D:1279:GLN:NE2	2.40	0.55
5:F:505:ILE:HG23	7:2:21:DT:C7	2.35	0.55
3:D:522:GLY:O	3:D:525:MET:HG2	2.07	0.55
3:D:950:ILE:HB	3:D:1018:ALA:HB3	1.89	0.55
5:F:138:PRO:HD2	5:F:353:LEU:HD13	1.87	0.55
2:C:1296:ASP:O	2:C:1301:ARG:NH2	2.40	0.55
7:2:40:DG:C2	7:2:41:DT:N1	2.75	0.55
6:1:81:DA:N6	7:2:9:DG:C6	2.75	0.55
2:C:968:GLU:O	2:C:972:PHE:N	2.38	0.55
3:D:1163:VAL:HG23	3:D:1177:ILE:HG22	1.88	0.55
1:B:124:VAL:HG21	1:B:210:THR:HG22	1.88	0.54
3:D:1268:ASN:ND2	3:D:1301:THR:OG1	2.40	0.54
5:F:592:ALA:HA	5:F:595:LEU:HD12	1.90	0.54
4:E:2:ALA:N	4:E:5:THR:O	2.40	0.54
2:C:360:LEU:CD2	2:C:378:ARG:HD3	2.37	0.54
6:1:81:DA:H1'	6:1:82:DC:C6	2.43	0.54
3:D:790:THR:HB	7:2:12:DA:C5	2.43	0.54
3:D:332:LYS:HA	3:D:1328:THR:HG21	1.89	0.54
6:1:81:DA:N6	7:2:9:DG:O6	2.41	0.54
2:C:379:GLU:OE1	2:C:379:GLU:HA	2.07	0.54
6:1:51:DC:N3	6:1:52:DC:C4	2.75	0.54
3:D:733:SER:H	3:D:736:GLN:HB2	1.72	0.54
6:1:86:DT:N3	7:2:5:DA:C2	2.76	0.54
1:A:235:ARG:HA	1:B:218:ARG:HE	1.73	0.54
2:C:1069:ARG:NH2	2:C:1114:GLU:OE2	2.37	0.54
3:D:476:ALA:HA	3:D:479:GLU:HB2	1.89	0.54
5:F:161:LEU:O	5:F:164:GLY:HA3	2.08	0.54
2:C:191:LYS:O	2:C:193:ASN:ND2	2.41	0.53
2:C:1132:LEU:HD13	2:C:1177:ARG:HH21	1.72	0.53
3:D:799:ARG:HB3	3:D:1309:ILE:HD12	1.91	0.53
5:F:251:LYS:HA	5:F:254:GLU:HB2	1.91	0.53
2:C:675:ASP:OD2	3:D:744:ARG:NH1	2.41	0.53
7:2:2:DT:N1	7:2:3:DG:N7	2.55	0.53
6:1:56:DA:H1'	7:2:36:DG:H22	1.74	0.53
2:C:678:ARG:HD3	2:C:1106:ARG:HD2	1.90	0.53
3:D:214:ARG:HH12	3:D:218:THR:HB	1.74	0.53
2:C:93:SER:OG	2:C:94:ALA:N	2.40	0.53
2:C:1016:GLU:O	2:C:1020:GLU:N	2.34	0.53

Continued on next page...

Continued from previous page...

Atom-1	Atom-2	Interatomic distance (Å)	Clash overlap (Å)
3:D:369:PRO:HG2	3:D:372:MET:HB3	1.89	0.53
6:1:58:DT:H3	7:2:34:DG:N2	2.05	0.53
6:1:86:DT:O4	7:2:5:DA:N1	2.42	0.53
8:J:57:ARG:HD2	8:J:60:LEU:HD12	1.91	0.53
1:A:9:LEU:O	1:B:227:GLN:NE2	2.41	0.53
2:C:805:MET:SD	2:C:805:MET:N	2.82	0.53
3:D:46:TYR:OH	3:D:47:ARG:NH2	2.42	0.53
2:C:450:ASN:N	2:C:450:ASN:OD1	2.42	0.53
2:C:1268:GLN:OE1	3:D:352:ARG:NH1	2.42	0.53
1:A:592:THR:CG2	1:A:595:SER:HB2	2.39	0.52
2:C:1273:MET:HB3	3:D:428:THR:HB	1.91	0.52
3:D:275:ARG:HH11	3:D:298:MET:HB3	1.74	0.52
3:D:909:ILE:HD11	3:D:913:GLU:HB3	1.90	0.52
5:F:322:MET:N	5:F:322:MET:SD	2.83	0.52
1:A:23:HIS:HE1	1:A:25:LYS:HE3	1.74	0.52
1:A:597:ASN:OD1	1:A:600:LYS:NZ	2.42	0.52
1:A:91:ARG:HB3	1:A:122:GLU:HB3	1.91	0.52
2:C:232:ILE:HG23	2:C:237:LEU:HD13	1.91	0.52
5:F:589:GLN:NE2	8:J:82:TYR:O	2.43	0.52
1:A:51:MET:HE3	1:A:52:PRO:HD2	1.92	0.52
1:B:193:GLU:H	1:B:193:GLU:CD	2.11	0.52
2:C:240:GLU:HB3	2:C:283:LYS:HZ1	1.74	0.52
2:C:692:THR:OG1	2:C:694:ARG:O	2.27	0.52
3:D:547:ARG:HA	3:D:573:THR:HA	1.92	0.52
5:F:254:GLU:HA	5:F:257:LYS:HB2	1.92	0.52
7:2:7:DC:H2"	7:2:8:DC:C6	2.44	0.52
3:D:1046:ILE:HG21	3:D:1061:VAL:HA	1.92	0.52
6:1:84:DG:N2	7:2:8:DC:C4	2.78	0.52
7:2:19:DG:C2	7:2:20:DG:C6	2.98	0.52
2:C:720:ARG:NH2	2:C:749:ASP:OD1	2.43	0.51
3:D:1048:ARG:HH11	3:D:1059:LEU:HD23	1.75	0.51
5:F:161:LEU:O	5:F:165:PHE:N	2.42	0.51
6:1:86:DT:C2	6:1:87:DG:C4	2.98	0.51
2:C:230:PHE:HB3	2:C:237:LEU:HD11	1.92	0.51
6:1:37:DA:OP2	8:J:94:ARG:NH1	2.42	0.51
6:1:81:DA:C6	7:2:10:DT:O4	2.63	0.51
7:2:21:DT:H6	7:2:21:DT:P	2.34	0.51
2:C:886:LYS:HB3	2:C:917:SER:HA	1.92	0.51
3:D:1024:THR:HA	3:D:1125:PRO:HA	1.93	0.51
6:1:82:DC:C4	6:1:83:DG:C6	2.98	0.51
2:C:1296:ASP:OD2	3:D:345:LYS:NZ	2.43	0.51

Continued on next page...

Continued from previous page...

Atom-1	Atom-2	Interatomic distance (Å)	Clash overlap (Å)
3:D:123:ARG:HH21	3:D:1334:GLU:HG2	1.75	0.51
3:D:1173:ARG:HB2	3:D:1192:LYS:HD2	1.92	0.51
1:A:114:ASP:OD1	1:A:114:ASP:N	2.40	0.51
2:C:733:VAL:HG12	2:C:750:ILE:HA	1.92	0.51
3:D:124:ILE:O	3:D:128:LEU:N	2.41	0.51
6:1:76:DC:H3'	6:1:77:DT:H72	1.93	0.51
6:1:83:DG:N2	7:2:9:DG:C4	2.79	0.51
3:D:798:ARG:NH1	7:2:11:DG:OP1	2.44	0.51
7:2:40:DG:C5	7:2:41:DT:C7	2.94	0.51
3:D:53:ARG:NH2	3:D:87:LYS:O	2.44	0.51
3:D:1179:PRO:HD3	3:D:1184:ASP:HA	1.92	0.51
2:C:602:GLU:OE2	2:C:604:HIS:NE2	2.43	0.51
2:C:705:GLU:HB3	2:C:794:LEU:H	1.74	0.51
3:D:242:LEU:HD21	3:D:306:LEU:HD22	1.92	0.51
7:2:43:DT:N3	7:2:44:DT:N3	2.59	0.51
2:C:1103:VAL:HG13	2:C:1104:PRO:HD3	1.93	0.50
3:D:744:ARG:H	3:D:759:ILE:HD13	1.76	0.50
5:F:575:GLU:O	5:F:578:LYS:NZ	2.40	0.50
2:C:903:ARG:HG3	2:C:908:GLU:HB3	1.94	0.50
3:D:647:PRO:HG3	3:D:697:MET:HG2	1.93	0.50
3:D:708:ASN:HB3	3:D:713:GLU:HA	1.93	0.50
5:F:252:LEU:HA	5:F:255:VAL:HG12	1.93	0.50
6:1:84:DG:C5	6:1:85:DA:N7	2.79	0.50
6:1:84:DG:H2'	6:1:85:DA:H8	1.75	0.50
7:2:59:DT:C7	8:J:39:GLN:HB3	2.41	0.50
2:C:739:ASP:OD1	2:C:739:ASP:N	2.42	0.50
2:C:857:VAL:HG11	2:C:862:LEU:HD23	1.93	0.50
2:C:976:ARG:CZ	2:C:984:VAL:HG21	2.41	0.50
3:D:431:ARG:HD2	3:D:493:PRO:HG3	1.93	0.50
6:1:47:DA:N6	7:2:43:DT:O4	2.45	0.50
7:2:40:DG:C4	7:2:41:DT:C5	2.92	0.50
7:2:40:DG:C2	7:2:41:DT:C1'	2.94	0.50
2:C:798:GLN:HG2	2:C:827:ARG:HB3	1.93	0.50
3:D:690:ASN:O	3:D:738:ARG:NH1	2.43	0.50
5:F:161:LEU:C	5:F:164:GLY:H	2.15	0.50
5:F:359:LYS:O	5:F:363:ARG:NH1	2.44	0.50
6:1:55:DC:H2'	6:1:55:DC:O2	2.12	0.50
1:B:60:GLU:HG3	1:B:143:ARG:HE	1.77	0.49
2:C:377:THR:CG2	2:C:380:ALA:CB	2.89	0.49
2:C:1209:GLN:HG2	2:C:1224:PRO:HB2	1.94	0.49
3:D:651:HIS:HA	3:D:654:ILE:HB	1.94	0.49

Continued on next page...

Continued from previous page...

Atom-1	Atom-2	Interatomic distance (Å)	Clash overlap (Å)
5:F:283:GLN:HE22	5:F:343:LYS:HG2	1.77	0.49
6:1:29:DA:H5''	8:J:34:SER:HB3	1.93	0.49
2:C:518:ASN:N	2:C:518:ASN:OD1	2.45	0.49
3:D:983:LYS:HB3	3:D:985:ILE:HD11	1.94	0.49
6:1:86:DT:C4	6:1:87:DG:O6	2.64	0.49
6:1:51:DC:H2''	6:1:52:DC:O5'	2.12	0.49
7:2:43:DT:C4	7:2:44:DT:C4	3.00	0.49
3:D:107:LEU:HA	3:D:276:ASN:HD21	1.77	0.49
5:F:591:GLU:O	5:F:595:LEU:N	2.42	0.49
5:F:157:ARG:NH1	5:F:159:SER:OG	2.40	0.49
7:2:60:DG:O6	8:J:36:TRP:NE1	2.45	0.49
2:C:125:GLY:HA2	2:C:499:SER:HB2	1.94	0.49
2:C:848:GLU:HG3	2:C:889:PRO:HD2	1.93	0.49
3:D:1175:LEU:HB2	3:D:1190:ILE:HD12	1.93	0.49
5:F:593:LYS:HD3	5:F:596:ARG:HB2	1.95	0.49
6:1:86:DT:O4	7:2:5:DA:C6	2.66	0.49
7:2:3:DG:H2''	7:2:4:DC:O4'	2.12	0.49
2:C:55:SER:OG	2:C:465:ARG:NH1	2.45	0.49
1:A:591:LEU:CD1	1:A:631:GLU:HB3	2.43	0.49
2:C:842:ASP:OD1	2:C:842:ASP:N	2.43	0.49
7:2:21:DT:OP2	7:2:21:DT:C5	2.66	0.49
2:C:164:THR:HG23	2:C:171:LEU:HD11	1.95	0.48
2:C:648:ASP:OD1	2:C:648:ASP:N	2.42	0.48
3:D:242:LEU:HD12	3:D:243:PRO:HD2	1.95	0.48
3:D:417:ARG:NH2	4:E:43:ASN:O	2.43	0.48
3:D:1273:ASP:N	3:D:1273:ASP:OD1	2.46	0.48
3:D:743:MET:HB2	3:D:759:ILE:HG23	1.94	0.48
1:A:593:VAL:CG1	8:J:16:GLU:HB3	2.42	0.48
2:C:890:LYS:HB2	2:C:914:LYS:HB2	1.95	0.48
3:D:468:VAL:O	3:D:469:HIS:ND1	2.46	0.48
3:D:555:TYR:HD2	3:D:585:LYS:HB3	1.79	0.48
3:D:787:ALA:HA	3:D:790:THR:OG1	2.13	0.48
3:D:1002:VAL:H	3:D:1020:TRP:HB3	1.78	0.48
7:2:40:DG:N7	7:2:41:DT:H73	2.29	0.48
2:C:632:ASP:N	2:C:632:ASP:OD1	2.42	0.48
3:D:1048:ARG:HE	3:D:1050:THR:HG22	1.79	0.48
3:D:1258:ARG:O	3:D:1258:ARG:NH1	2.45	0.48
6:1:83:DG:H2''	6:1:84:DG:O5'	2.14	0.48
2:C:530:ILE:HD11	2:C:575:LEU:HD23	1.95	0.48
2:C:975:ILE:CD1	2:C:994:ARG:HH22	2.04	0.48
3:D:1159:ILE:HG21	3:D:1179:PRO:HG3	1.95	0.48

Continued on next page...

Continued from previous page...

Atom-1	Atom-2	Interatomic distance (Å)	Clash overlap (Å)
3:D:1230:THR:HA	3:D:1233:ILE:HD12	1.95	0.48
2:C:1122:LYS:HD3	2:C:1229:TYR:CZ	2.49	0.48
5:F:555:GLU:HG3	5:F:590:ILE:HD12	1.94	0.48
7:2:37:DA:C2	7:2:38:DA:N9	2.81	0.48
2:C:14:ASP:OD2	2:C:15:PHE:N	2.47	0.48
2:C:1146:GLN:HE22	2:C:1160:ASP:HA	1.79	0.48
3:D:417:ARG:HG2	3:D:418:GLU:HG2	1.96	0.48
3:D:689:ALA:HB2	3:D:692:ARG:HH21	1.79	0.48
7:2:40:DG:N2	7:2:41:DT:H1'	2.29	0.48
2:C:557:ARG:NH1	2:C:611:GLU:OE2	2.46	0.48
3:D:294:ASN:OD1	3:D:297:ARG:NH1	2.47	0.48
5:F:399:LEU:HD22	5:F:447:ALA:HB2	1.95	0.48
1:A:593:VAL:CG1	8:J:16:GLU:CB	2.88	0.47
3:D:255:LEU:HD11	3:D:261:ALA:HB2	1.96	0.47
5:F:234:THR:HG21	5:F:248:GLU:HG2	1.96	0.47
1:A:617:GLU:HA	1:A:620:LYS:HB2	1.96	0.47
2:C:444:ASP:N	2:C:444:ASP:OD1	2.46	0.47
5:F:131:GLN:HB2	5:F:261:LEU:HD21	1.95	0.47
6:1:43:DA:H2	7:2:49:DT:C2	2.31	0.47
6:1:51:DC:H42	6:1:52:DC:H41	1.62	0.47
6:1:87:DG:H2''	6:1:88:DC:H6	1.79	0.47
5:F:119:ILE:HA	5:F:122:ARG:HB2	1.95	0.47
2:C:30:ILE:HD13	2:C:575:LEU:HD21	1.95	0.47
2:C:231:GLU:O	2:C:238:GLN:N	2.46	0.47
2:C:1258:PRO:HG2	3:D:346:ARG:HB2	1.95	0.47
3:D:624:ILE:O	3:D:628:GLY:N	2.48	0.47
5:F:492:ASP:OD1	5:F:492:ASP:N	2.47	0.47
6:1:88:DC:H2''	6:1:89:DA:H5'	1.97	0.47
2:C:397:LEU:HB2	2:C:418:GLY:HA2	1.96	0.47
3:D:1067:ARG:HH12	3:D:1076:PRO:HG3	1.80	0.47
6:1:43:DA:C2	7:2:49:DT:C2	3.03	0.47
6:1:82:DC:H42	7:2:9:DG:H1	1.61	0.47
3:D:685:ILE:O	3:D:692:ARG:NH2	2.46	0.47
6:1:85:DA:H2''	6:1:86:DT:H73	1.97	0.47
3:D:786:THR:HG23	3:D:787:ALA:N	2.28	0.47
3:D:1081:VAL:HB	3:D:1085:GLY:HA2	1.96	0.47
5:F:305:LEU:HB3	5:F:315:TRP:HB2	1.96	0.47
5:F:480:PRO:HA	5:F:483:LEU:HD12	1.96	0.47
5:F:492:ASP:O	5:F:496:LYS:N	2.47	0.47
5:F:589:GLN:HG2	8:J:78:MET:HB2	1.97	0.47
3:D:903:LEU:HD22	3:D:1249:ASN:HD22	1.79	0.47

Continued on next page...

Continued from previous page...

Atom-1	Atom-2	Interatomic distance (Å)	Clash overlap (Å)
8:J:22:LEU:H	8:J:58:ARG:HH22	1.62	0.47
2:C:772:SER:OG	2:C:775:GLU:OE1	2.28	0.47
2:C:899:GLU:O	2:C:903:ARG:N	2.44	0.47
6:1:42:DA:C2	6:1:43:DA:C4	3.02	0.47
7:2:33:DA:C6	7:2:34:DG:N1	2.83	0.47
3:D:134:ASP:HB3	3:D:159:ILE:HD11	1.96	0.47
3:D:1034:PHE:HB2	3:D:1081:VAL:HG23	1.97	0.47
1:A:585:PRO:HA	1:A:606:TYR:HA	1.98	0.46
3:D:768:ASN:HB3	3:D:771:GLN:HG3	1.96	0.46
8:J:62:ALA:HB2	8:J:80:LEU:HD21	1.96	0.46
2:C:975:ILE:HD13	2:C:994:ARG:HH12	1.79	0.46
5:F:305:LEU:HD12	5:F:315:TRP:HA	1.96	0.46
7:2:33:DA:C2	7:2:34:DG:N3	2.83	0.46
2:C:208:ILE:HG23	2:C:362:ALA:HB1	1.97	0.46
3:D:1109:LEU:HD13	3:D:1113:VAL:HB	1.96	0.46
6:1:55:DC:O2	6:1:55:DC:C2'	2.62	0.46
1:B:191:ARG:NH1	1:B:191:ARG:CG	2.73	0.46
2:C:654:ASP:OD1	2:C:659:GLN:NE2	2.48	0.46
3:D:1148:ARG:NH1	6:1:83:DG:OP1	2.48	0.46
5:F:268:TYR:O	5:F:272:SER:N	2.47	0.46
1:B:47:LEU:HD21	1:B:180:VAL:HG11	1.97	0.46
2:C:980:VAL:HG13	2:C:981:ALA:N	2.30	0.46
8:J:58:ARG:HB3	8:J:80:LEU:HG	1.97	0.46
2:C:447:HIS:HD2	2:C:449:GLY:H	1.62	0.46
5:F:581:ASP:OD1	5:F:581:ASP:N	2.49	0.46
1:A:630:THR:OG1	1:A:631:GLU:OE1	2.31	0.46
1:B:191:ARG:HD2	1:B:192:VAL:N	2.30	0.46
3:D:886:VAL:HA	3:D:1258:ARG:HD3	1.98	0.46
3:D:978:ARG:NH2	3:D:1197:ASN:OD1	2.42	0.46
2:C:251:ALA:O	2:C:265:LYS:NZ	2.41	0.46
3:D:495:ASN:OD1	3:D:495:ASN:N	2.48	0.46
3:D:1220:ILE:HG22	3:D:1229:VAL:HG22	1.98	0.46
6:1:84:DG:N2	7:2:7:DC:C2	2.84	0.46
1:A:648:GLU:HG2	1:A:649:ASN:H	1.80	0.46
1:B:16:ILE:HG12	1:B:26:VAL:HG12	1.98	0.46
3:D:591:ILE:HG23	3:D:592:VAL:HG13	1.98	0.46
3:D:705:THR:HG21	3:D:719:PHE:H	1.80	0.46
1:A:207:THR:OG1	1:A:208:ASN:N	2.49	0.45
1:A:604:ILE:HD11	1:A:613:ARG:HG2	1.97	0.45
1:B:13:LEU:HD21	1:B:16:ILE:HD11	1.98	0.45
1:B:207:THR:OG1	1:B:208:ASN:N	2.49	0.45

Continued on next page...

Continued from previous page...

Atom-1	Atom-2	Interatomic distance (Å)	Clash overlap (Å)
2:C:786:GLY:H	2:C:789:THR:HB	1.81	0.45
3:D:342:LEU:HD11	3:D:1352:ILE:HB	1.98	0.45
3:D:559:ALA:HB3	3:D:562:GLU:HB3	1.97	0.45
1:A:75:GLN:HB2	1:A:132:HIS:HB2	1.97	0.45
3:D:836:ARG:HG3	3:D:869:CYS:HB3	1.98	0.45
3:D:964:LYS:O	3:D:976:THR:OG1	2.28	0.45
8:J:31:SER:HB3	8:J:38:LEU:HD22	1.99	0.45
1:A:614:THR:HG23	1:A:617:GLU:H	1.81	0.45
3:D:520:ALA:HB2	3:D:543:SER:HB3	1.98	0.45
3:D:1063:ASP:HA	3:D:1103:GLY:HA3	1.98	0.45
1:B:48:LEU:HD11	3:D:535:ARG:HG2	1.98	0.45
6:1:84:DG:C5	6:1:85:DA:C6	3.04	0.45
1:A:215:GLU:HA	1:A:218:ARG:HB3	1.97	0.45
2:C:120:GLN:HE22	2:C:488:MET:HB3	1.82	0.45
6:1:88:DC:H2''	6:1:89:DA:C8	2.52	0.45
7:2:43:DT:C6	7:2:44:DT:C4	3.04	0.45
6:1:44:DA:C6	6:1:45:DA:N1	2.84	0.45
7:2:22:DA:C2'	7:2:23:DA:OP1	2.32	0.45
7:2:37:DA:N3	7:2:38:DA:N9	2.64	0.45
2:C:377:THR:HG22	2:C:380:ALA:HB2	1.94	0.45
2:C:562:GLU:OE1	2:C:662:SER:OG	2.30	0.45
3:D:1261:LEU:HD21	3:D:1306:LEU:HD12	1.99	0.45
2:C:216:THR:H	2:C:219:GLN:HB2	1.81	0.45
2:C:1141:LEU:HD21	2:C:1173:ALA:HB2	1.99	0.45
6:1:51:DC:H42	6:1:52:DC:N4	2.15	0.45
6:1:86:DT:O2	6:1:87:DG:C4	2.69	0.45
8:J:99:THR:OG1	8:J:102:ASP:OD2	2.35	0.45
3:D:528:THR:OG1	3:D:529:GLY:N	2.49	0.45
3:D:816:THR:O	3:D:883:ARG:NH1	2.47	0.45
6:1:51:DC:H1'	6:1:52:DC:C5'	2.44	0.45
3:D:609:TYR:HB3	3:D:617:THR:HG21	1.97	0.44
3:D:1057:SER:OG	3:D:1058:SER:N	2.50	0.44
3:D:353:SER:HB3	3:D:372:MET:HE1	1.99	0.44
3:D:1036:ARG:HE	3:D:1081:VAL:HG11	1.81	0.44
3:D:1307:LEU:HD11	3:D:1311:LYS:HD2	1.99	0.44
5:F:372:ALA:O	5:F:376:LYS:NZ	2.50	0.44
1:B:207:THR:HG1	1:B:208:ASN:H	1.66	0.44
3:D:259:ARG:NH2	5:F:499:LYS:O	2.50	0.44
3:D:975:ILE:HD13	3:D:1001:ALA:HB3	1.99	0.44
3:D:1033:GLY:HA2	3:D:1114:GLN:HE21	1.81	0.44
3:D:1041:ILE:HB	3:D:1044:GLN:HB2	2.00	0.44

Continued on next page...

Continued from previous page...

Atom-1	Atom-2	Interatomic distance (Å)	Clash overlap (Å)
7:2:43:DT:H71	7:2:44:DT:O4	2.17	0.44
2:C:960:LEU:HB3	2:C:1025:PHE:HE1	1.82	0.44
3:D:309:ASN:ND2	3:D:316:ILE:O	2.37	0.44
2:C:665:ALA:HB2	2:C:683:ALA:HB2	2.00	0.44
3:D:1181:ASP:OD1	3:D:1181:ASP:N	2.51	0.44
6:1:86:DT:O2	6:1:87:DG:O4'	2.36	0.44
2:C:550:VAL:O	3:D:777:HIS:NE2	2.37	0.44
5:F:442:SER:OG	5:F:446:GLN:OE1	2.35	0.44
6:1:41:DC:H42	7:2:50:DG:H1	1.65	0.44
2:C:496:LYS:HB3	2:C:496:LYS:HE2	1.79	0.44
2:C:734:ILE:HG22	2:C:749:ASP:HB2	2.00	0.44
1:A:134:THR:HB	2:C:773:LEU:HD22	1.98	0.44
1:B:82:LEU:HD13	1:B:85:LEU:HD12	1.99	0.44
2:C:13:LYS:HD2	2:C:1149:TYR:HB2	1.99	0.44
2:C:452:ARG:NH2	2:C:458:GLU:OE2	2.50	0.44
6:1:84:DG:O6	7:2:6:DT:O4	2.35	0.44
2:C:436:ARG:O	2:C:436:ARG:NH1	2.50	0.43
3:D:210:SER:O	3:D:214:ARG:N	2.51	0.43
3:D:863:LEU:HD22	3:D:865:HIS:HD2	1.83	0.43
8:J:104:ARG:HD2	8:J:105:HIS:CE1	2.53	0.43
2:C:917:SER:O	2:C:919:ARG:NH1	2.51	0.43
2:C:936:ARG:HH12	5:F:495:ARG:HD3	1.83	0.43
2:C:1277:ALA:HB2	3:D:428:THR:HG21	1.99	0.43
6:1:84:DG:H2''	6:1:85:DA:O4'	2.18	0.43
7:2:19:DG:N1	7:2:20:DG:O6	2.51	0.43
1:A:212:ASP:OD2	1:A:215:GLU:N	2.51	0.43
2:C:232:ILE:HG13	2:C:331:LYS:HA	2.00	0.43
2:C:1280:ALA:O	3:D:431:ARG:NH2	2.45	0.43
3:D:350:SER:OG	3:D:351:GLY:N	2.52	0.43
2:C:302:ILE:HD12	2:C:307:GLY:HA2	2.01	0.43
5:F:376:LYS:HE2	5:F:376:LYS:HB2	1.87	0.43
2:C:14:ASP:HA	2:C:1183:ALA:HB3	2.00	0.43
6:1:86:DT:H2''	6:1:87:DG:O5'	2.18	0.43
7:2:59:DT:C7	8:J:39:GLN:CB	2.97	0.43
1:A:29:GLU:HA	1:A:30:PRO:HA	1.82	0.43
5:F:161:LEU:HD12	5:F:164:GLY:HA3	2.00	0.43
7:2:2:DT:C1'	7:2:3:DG:H8	2.28	0.43
1:A:110:VAL:HB	1:A:131:CYS:H	1.83	0.43
1:A:591:LEU:CG	1:A:631:GLU:HB3	2.49	0.43
1:B:61:ILE:HG23	1:B:142:MET:HB3	2.01	0.43
2:C:67:GLU:OE2	2:C:105:TYR:OH	2.36	0.43

Continued on next page...

Continued from previous page...

Atom-1	Atom-2	Interatomic distance (Å)	Clash overlap (Å)
2:C:705:GLU:HA	2:C:708:VAL:HG12	2.01	0.43
2:C:1103:VAL:HG11	3:D:639:VAL:HG11	2.01	0.43
3:D:399:LYS:HA	3:D:399:LYS:HD2	1.85	0.43
2:C:844:LYS:HD2	2:C:845:LEU:HG	2.00	0.43
2:C:895:LEU:HD13	2:C:899:GLU:HB2	2.00	0.43
3:D:1164:SER:HB2	3:D:1176:VAL:HG23	2.01	0.43
3:D:981:GLU:HB2	3:D:996:LYS:HA	2.01	0.43
6:1:83:DG:C2	7:2:9:DG:N2	2.87	0.43
2:C:1269:ARG:HB3	7:2:14:DT:H5'	2.00	0.43
3:D:573:THR:HG23	3:D:576:ARG:H	1.83	0.43
6:1:84:DG:H2''	6:1:85:DA:C5'	2.48	0.43
2:C:1244:HIS:NE2	2:C:1266:GLY:O	2.52	0.42
3:D:258:GLY:O	3:D:259:ARG:NH1	2.52	0.42
3:D:481:ARG:NH1	4:E:3:ARG:O	2.52	0.42
3:D:1259:GLN:HE21	3:D:1262:ARG:HE	1.67	0.42
1:B:40:GLY:O	1:B:44:ARG:N	2.46	0.42
2:C:509:SER:OG	2:C:510:GLN:N	2.52	0.42
3:D:422:LEU:HB2	3:D:469:HIS:HB2	2.01	0.42
3:D:516:ASP:OD1	3:D:516:ASP:N	2.47	0.42
3:D:739:GLN:HB3	3:D:744:ARG:HB3	2.01	0.42
7:2:18:DG:C8	7:2:19:DG:C8	3.07	0.42
2:C:300:ASP:OD1	2:C:313:ALA:N	2.51	0.42
2:C:754:THR:N	2:C:767:GLN:OE1	2.50	0.42
2:C:840:SER:HG	2:C:1048:LYS:H	1.65	0.42
3:D:370:LYS:HE2	3:D:370:LYS:HB2	1.70	0.42
3:D:480:ALA:HA	3:D:484:MET:HG3	2.01	0.42
5:F:572:THR:H	5:F:575:GLU:HB2	1.83	0.42
8:J:4:GLN:HG3	8:J:45:VAL:HG13	2.02	0.42
2:C:975:ILE:CD1	2:C:994:ARG:HH12	2.32	0.42
3:D:1061:VAL:HB	3:D:1105:ALA:HB3	2.02	0.42
5:F:138:PRO:HA	5:F:141:ILE:HD12	2.01	0.42
7:2:4:DC:N4	7:2:5:DA:N6	2.68	0.42
1:A:78:ILE:HA	1:A:81:ILE:HD12	2.02	0.42
1:A:232:VAL:HA	1:B:218:ARG:HG3	2.02	0.42
1:A:591:LEU:CG	1:A:592:THR:N	2.73	0.42
3:D:536:LEU:HG	3:D:541:LEU:HB2	2.02	0.42
3:D:787:ALA:O	3:D:790:THR:OG1	2.33	0.42
5:F:240:ARG:HH12	5:F:353:LEU:HA	1.84	0.42
2:C:202:ARG:HH12	7:2:6:DT:H3'	1.84	0.42
2:C:360:LEU:CD1	2:C:378:ARG:CD	2.98	0.42
3:D:184:ALA:O	3:D:188:LEU:N	2.49	0.42

Continued on next page...

Continued from previous page...

Atom-1	Atom-2	Interatomic distance (Å)	Clash overlap (Å)
3:D:1318:SER:OG	3:D:1319:PHE:N	2.53	0.42
1:B:25:LYS:HE3	1:B:204:GLU:HG3	2.01	0.42
3:D:858:VAL:HG23	3:D:862:THR:HG23	2.00	0.42
3:D:863:LEU:HD12	3:D:908:ILE:HG23	2.02	0.42
6:1:86:DT:C2	6:1:87:DG:N9	2.80	0.42
3:D:786:THR:CG2	3:D:787:ALA:N	2.83	0.42
2:C:1257:GLN:OE1	3:D:341:ASN:ND2	2.53	0.41
3:D:479:GLU:OE2	3:D:1361:THR:OG1	2.32	0.41
3:D:489:ASN:OD1	3:D:489:ASN:N	2.53	0.41
3:D:651:HIS:O	3:D:655:SER:N	2.48	0.41
5:F:390:ILE:HD12	5:F:435:ILE:HD11	2.02	0.41
8:J:99:THR:HA	8:J:100:PRO:HD3	1.93	0.41
2:C:542:ARG:NH1	6:1:79:DT:OP1	2.52	0.41
2:C:906:PHE:HD2	5:F:611:LEU:HG	1.86	0.41
2:C:1214:ASP:HB2	2:C:1221:PHE:HE2	1.84	0.41
3:D:501:VAL:HG23	3:D:602:SER:HB3	2.01	0.41
6:1:88:DC:C2'	6:1:89:DA:C8	3.03	0.41
7:2:33:DA:C6	7:2:34:DG:C6	3.08	0.41
2:C:398:SER:O	2:C:400:VAL:N	2.54	0.41
2:C:768:MET:O	2:C:785:ASP:N	2.47	0.41
2:C:803:ALA:HA	2:C:1227:VAL:HG22	2.02	0.41
2:C:1066:MET:O	2:C:1074:GLY:N	2.53	0.41
2:C:1296:ASP:HB3	2:C:1321:GLU:H	1.86	0.41
3:D:218:THR:O	3:D:222:LYS:N	2.46	0.41
8:J:42:PHE:O	8:J:46:THR:OG1	2.37	0.41
2:C:759:SER:HG	2:C:763:THR:H	1.64	0.41
3:D:55:GLY:H	3:D:58:CYS:HB2	1.84	0.41
3:D:95:THR:OG1	3:D:96:LYS:N	2.49	0.41
1:A:594:ARG:HH12	1:A:625:GLY:HA3	1.85	0.41
3:D:462:ASP:N	3:D:462:ASP:OD1	2.52	0.41
3:D:522:GLY:O	3:D:525:MET:SD	2.79	0.41
3:D:799:ARG:NH2	3:D:1146:GLU:OE1	2.54	0.41
5:F:513:ASP:OD1	5:F:513:ASP:N	2.52	0.41
7:2:62:DT:H2'	7:2:63:DG:C8	2.56	0.41
1:A:7:GLU:O	1:B:150:ARG:NH2	2.53	0.41
2:C:1089:GLU:HA	2:C:1213:TYR:HE2	1.86	0.41
3:D:911:LYS:HE2	3:D:911:LYS:HB3	1.83	0.41
5:F:462:LYS:HD3	5:F:465:ARG:HH21	1.85	0.41
2:C:1291:LEU:HD13	3:D:345:LYS:HD2	2.02	0.41
3:D:214:ARG:HD2	3:D:214:ARG:HA	1.87	0.41
5:F:355:ILE:HG22	5:F:359:LYS:HE3	2.03	0.41

Continued on next page...

Continued from previous page...

Atom-1	Atom-2	Interatomic distance (Å)	Clash overlap (Å)
6:1:68:DA:H2''	6:1:69:DA:H5'	2.03	0.41
2:C:74:ARG:N	2:C:97:ARG:O	2.54	0.41
2:C:882:ILE:HD11	2:C:885:GLY:HA2	2.03	0.41
2:C:1246:ARG:HD2	2:C:1267:GLY:N	2.35	0.41
5:F:557:LYS:HB2	5:F:560:ARG:HH21	1.86	0.41
7:2:37:DA:C4	7:2:38:DA:C8	3.07	0.41
1:B:133:LEU:HD23	1:B:133:LEU:HA	1.87	0.41
2:C:236:LYS:HD3	2:C:236:LYS:HA	1.84	0.41
2:C:711:ASP:OD1	2:C:711:ASP:N	2.48	0.41
2:C:1319:MET:HA	2:C:1320:PRO:HD3	1.96	0.41
3:D:111:THR:OG1	3:D:112:ALA:N	2.54	0.41
3:D:819:GLY:O	3:D:881:LYS:NZ	2.45	0.41
3:D:1284:ARG:HA	3:D:1287:ILE:HG12	2.03	0.41
5:F:315:TRP:HZ2	5:F:337:VAL:HG11	1.86	0.41
6:1:86:DT:C4	6:1:87:DG:N7	2.88	0.41
7:2:4:DC:N3	7:2:5:DA:C5	2.89	0.41
7:2:40:DG:N3	7:2:41:DT:C1'	2.83	0.41
2:C:1117:LEU:HD23	2:C:1117:LEU:HA	1.90	0.41
3:D:1348:LYS:HD3	3:D:1348:LYS:HA	1.90	0.41
8:J:61:LEU:HD12	8:J:61:LEU:HA	1.92	0.41
1:A:59:VAL:HG11	1:A:82:LEU:HD11	2.03	0.40
1:A:139:SER:OG	1:A:140:ILE:N	2.54	0.40
1:A:152:TYR:CZ	2:C:824:GLN:HG2	2.55	0.40
2:C:1084:ASP:HB2	2:C:1216:ARG:HG2	2.02	0.40
2:C:1119:MET:HE1	2:C:1208:GLY:HA3	2.03	0.40
3:D:923:ILE:HD11	3:D:1253:ILE:HG12	2.02	0.40
2:C:311:CYS:SG	2:C:312:ALA:N	2.95	0.40
2:C:766:ASN:OD1	2:C:767:GLN:N	2.53	0.40
2:C:1030:GLU:O	2:C:1034:ARG:N	2.52	0.40
5:F:157:ARG:HA	5:F:157:ARG:HD3	1.91	0.40
5:F:374:ARG:HA	5:F:377:LYS:HG3	2.02	0.40
6:1:44:DA:N1	6:1:45:DA:C2	2.89	0.40
6:1:56:DA:C2	7:2:35:DT:C4	3.04	0.40
6:1:87:DG:C2	7:2:5:DA:C2	3.09	0.40
7:2:40:DG:N9	7:2:41:DT:H71	2.26	0.40
1:B:171:LEU:HD23	1:B:171:LEU:HA	1.89	0.40
2:C:399:ALA:HA	2:C:402:ARG:HB3	2.02	0.40
6:1:43:DA:C2	7:2:49:DT:C4	3.08	0.40
7:2:48:DT:O4	8:J:86:GLN:NE2	2.41	0.40
2:C:13:LYS:HB2	2:C:1149:TYR:HB2	2.03	0.40
2:C:407:ARG:HD3	2:C:407:ARG:HA	1.82	0.40

Continued on next page...

Continued from previous page...

Atom-1	Atom-2	Interatomic distance (Å)	Clash overlap (Å)
2:C:531:SER:OG	2:C:532:ALA:N	2.54	0.40
2:C:698:PRO:HB3	2:C:1231:TYR:CZ	2.56	0.40
5:F:370:ALA:HA	5:F:373:ARG:HB3	2.03	0.40
6:1:35:DG:H2'	6:1:36:DA:C8	2.57	0.40
2:C:1246:ARG:NH2	2:C:1250:SER:O	2.54	0.40
3:D:327:LEU:HD23	3:D:327:LEU:HA	1.82	0.40
3:D:864:LEU:HD21	3:D:872:LEU:HD11	2.03	0.40
3:D:1054:THR:HG23	3:D:1056:LEU:H	1.86	0.40
3:D:1247:LYS:HE2	3:D:1247:LYS:HB2	1.84	0.40
3:D:1332:LEU:O	3:D:1336:ALA:N	2.54	0.40
5:F:324:LYS:HA	5:F:325:PRO:HD3	1.90	0.40
6:1:72:DG:H2''	6:1:73:DG:C5'	2.51	0.40
7:2:35:DT:H2'	7:2:36:DG:C8	2.57	0.40

There are no symmetry-related clashes.

5.3 Torsion angles [i](#)

5.3.1 Protein backbone [i](#)

In the following table, the Percentiles column shows the percent Ramachandran outliers of the chain as a percentile score with respect to all PDB entries followed by that with respect to all EM entries.

The Analysed column shows the number of residues for which the backbone conformation was analysed, and the total number of residues.

Mol	Chain	Analysed	Favoured	Allowed	Outliers	Percentiles	
1	A	307/329 (93%)	282 (92%)	25 (8%)	0	100	100
1	B	226/329 (69%)	211 (93%)	15 (7%)	0	100	100
2	C	1330/1342 (99%)	1252 (94%)	77 (6%)	1 (0%)	51	85
3	D	1327/1407 (94%)	1237 (93%)	89 (7%)	1 (0%)	51	85
4	E	77/91 (85%)	74 (96%)	3 (4%)	0	100	100
5	F	473/613 (77%)	427 (90%)	43 (9%)	3 (1%)	25	65
8	J	105/107 (98%)	102 (97%)	3 (3%)	0	100	100
All	All	3845/4218 (91%)	3585 (93%)	255 (7%)	5 (0%)	54	85

All (5) Ramachandran outliers are listed below:

Mol	Chain	Res	Type
2	C	399	ALA
5	F	507	MET
5	F	298	PRO
3	D	1184	ASP
5	F	167	ASP

5.3.2 Protein sidechains ⓘ

In the following table, the Percentiles column shows the percent sidechain outliers of the chain as a percentile score with respect to all PDB entries followed by that with respect to all EM entries.

The Analysed column shows the number of residues for which the sidechain conformation was analysed, and the total number of residues.

Mol	Chain	Analysed	Rotameric	Outliers	Percentiles	
1	A	269/286 (94%)	266 (99%)	3 (1%)	73	85
1	B	196/286 (68%)	190 (97%)	6 (3%)	40	62
2	C	1149/1157 (99%)	1136 (99%)	13 (1%)	73	85
3	D	1107/1168 (95%)	1100 (99%)	7 (1%)	86	92
4	E	67/75 (89%)	67 (100%)	0	100	100
5	F	415/540 (77%)	411 (99%)	4 (1%)	76	86
8	J	99/99 (100%)	99 (100%)	0	100	100
All	All	3302/3611 (91%)	3269 (99%)	33 (1%)	77	86

All (33) residues with a non-rotameric sidechain are listed below:

Mol	Chain	Res	Type
1	A	12	ARG
1	A	26	VAL
1	A	606	TYR
1	B	22	THR
1	B	70	THR
1	B	111	THR
1	B	191	ARG
1	B	193	GLU
1	B	196	THR
2	C	92	TYR
2	C	188	PHE
2	C	232	ILE
2	C	450	ASN

Continued on next page...

Continued from previous page...

Mol	Chain	Res	Type
2	C	600	THR
2	C	700	VAL
2	C	781	ASP
2	C	844	LYS
2	C	917	SER
2	C	976	ARG
2	C	996	ARG
2	C	1003	THR
2	C	1103	VAL
3	D	527	LEU
3	D	743	MET
3	D	763	PHE
3	D	790	THR
3	D	792	ASN
3	D	951	GLN
3	D	955	LYS
5	F	148	TYR
5	F	329	LYS
5	F	374	ARG
5	F	449	THR

Sometimes sidechains can be flipped to improve hydrogen bonding and reduce clashes. All (31) such sidechains are listed below:

Mol	Chain	Res	Type
1	B	37	HIS
2	C	120	GLN
2	C	193	ASN
2	C	406	ASN
2	C	613	ASN
2	C	955	GLN
2	C	1157	GLN
2	C	1220	GLN
2	C	1257	GLN
3	D	157	GLN
3	D	232	ASN
3	D	341	ASN
3	D	488	ASN
3	D	606	ASN
3	D	702	GLN
3	D	716	GLN
3	D	720	ASN
3	D	1010	GLN

Continued on next page...

Continued from previous page...

Mol	Chain	Res	Type
3	D	1114	GLN
3	D	1259	GLN
3	D	1268	ASN
4	E	43	ASN
5	F	128	ASN
5	F	210	ASN
5	F	283	GLN
5	F	309	ASN
5	F	406	GLN
5	F	518	HIS
5	F	568	ASN
8	J	85	GLN
8	J	105	HIS

5.3.3 RNA [i](#)

There are no RNA molecules in this entry.

5.4 Non-standard residues in protein, DNA, RNA chains [i](#)

There are no non-standard protein/DNA/RNA residues in this entry.

5.5 Carbohydrates [i](#)

There are no monosaccharides in this entry.

5.6 Ligand geometry [i](#)

Of 3 ligands modelled in this entry, 3 are monoatomic - leaving 0 for Mogul analysis.

There are no bond length outliers.

There are no bond angle outliers.

There are no chirality outliers.

There are no torsion outliers.

There are no ring outliers.

No monomer is involved in short contacts.

5.7 Other polymers [i](#)

There are no such residues in this entry.

5.8 Polymer linkage issues [i](#)

There are no chain breaks in this entry.

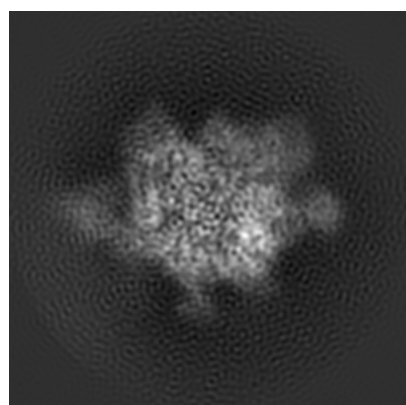
6 Map visualisation [i](#)

This section contains visualisations of the EMDB entry EMD-32322. These allow visual inspection of the internal detail of the map and identification of artifacts.

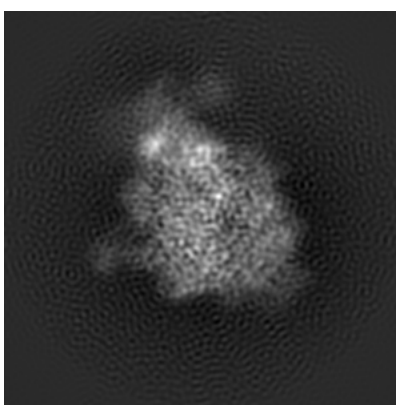
No raw map or half-maps were deposited for this entry and therefore no images, graphs, etc. pertaining to the raw map can be shown.

6.1 Orthogonal projections [i](#)

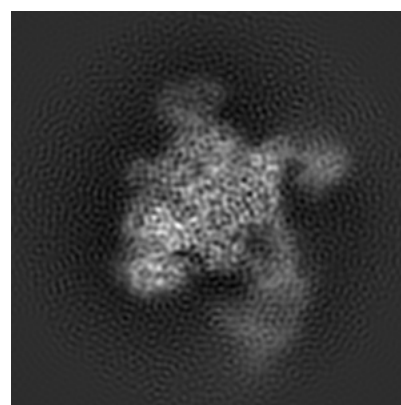
6.1.1 Primary map



X



Y

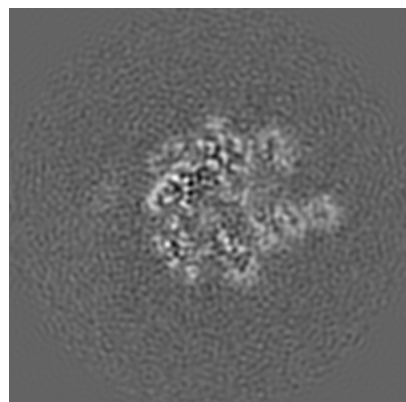


Z

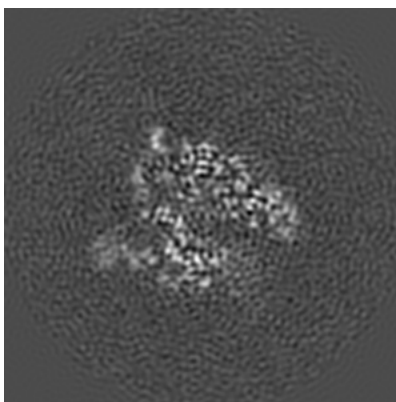
The images above show the map projected in three orthogonal directions.

6.2 Central slices [i](#)

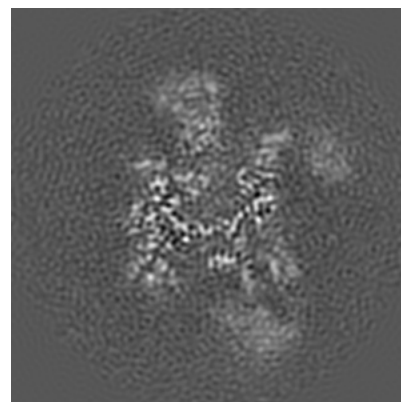
6.2.1 Primary map



X Index: 120



Y Index: 120

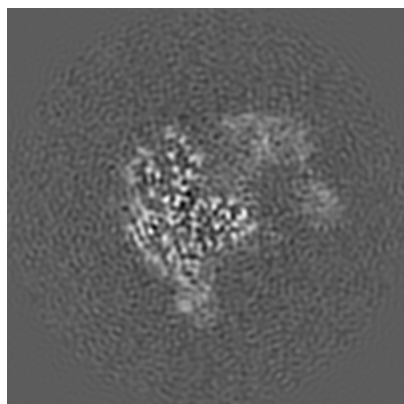


Z Index: 120

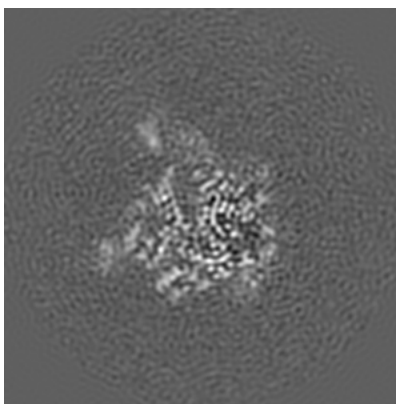
The images above show central slices of the map in three orthogonal directions.

6.3 Largest variance slices [i](#)

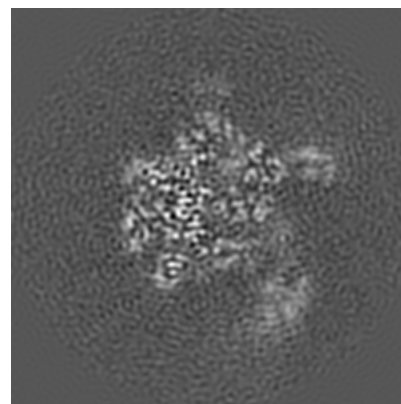
6.3.1 Primary map



X Index: 96



Y Index: 106

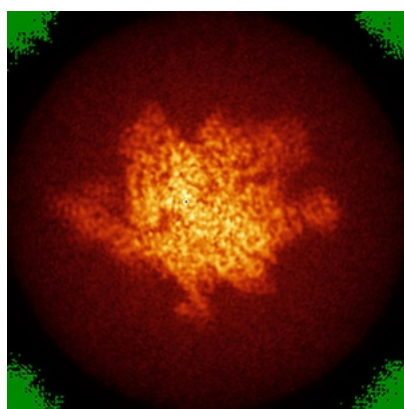


Z Index: 106

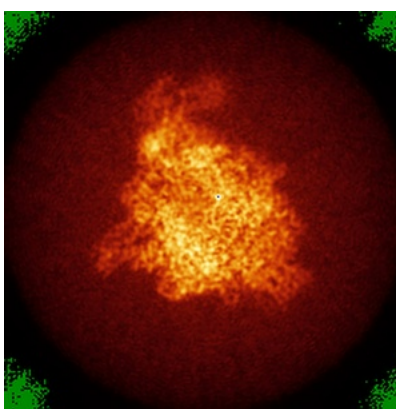
The images above show the largest variance slices of the map in three orthogonal directions.

6.4 Orthogonal standard-deviation projections (False-color) [i](#)

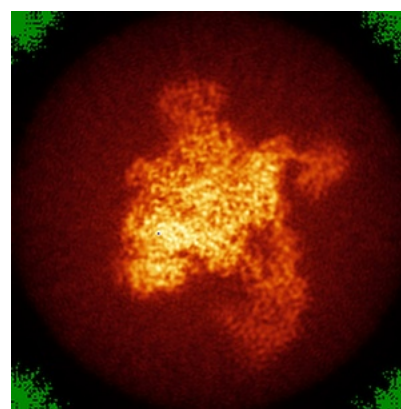
6.4.1 Primary map



X



Y

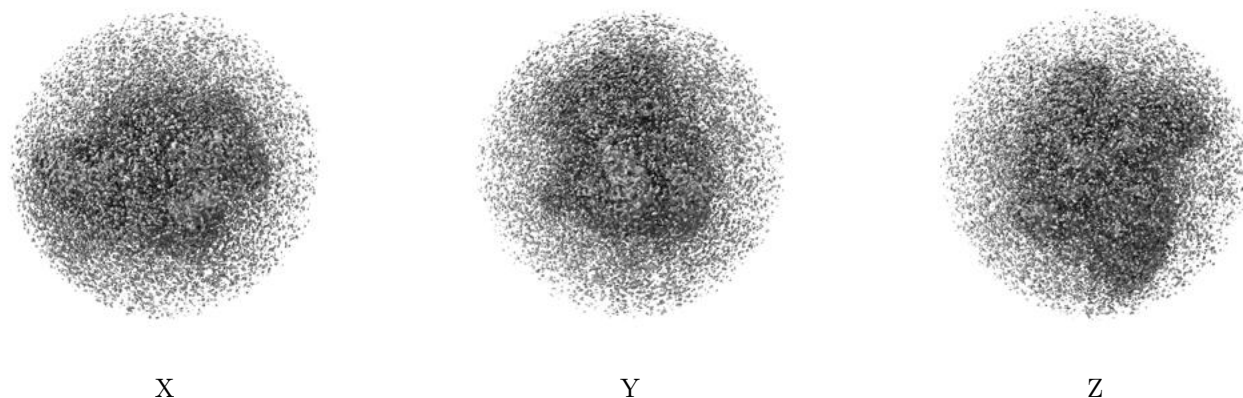


Z

The images above show the map standard deviation projections with false color in three orthogonal directions. Minimum values are shown in green, max in blue, and dark to light orange shades represent small to large values respectively.

6.5 Orthogonal surface views [i](#)

6.5.1 Primary map



The images above show the 3D surface view of the map at the recommended contour level 0.005. These images, in conjunction with the slice images, may facilitate assessment of whether an appropriate contour level has been provided.

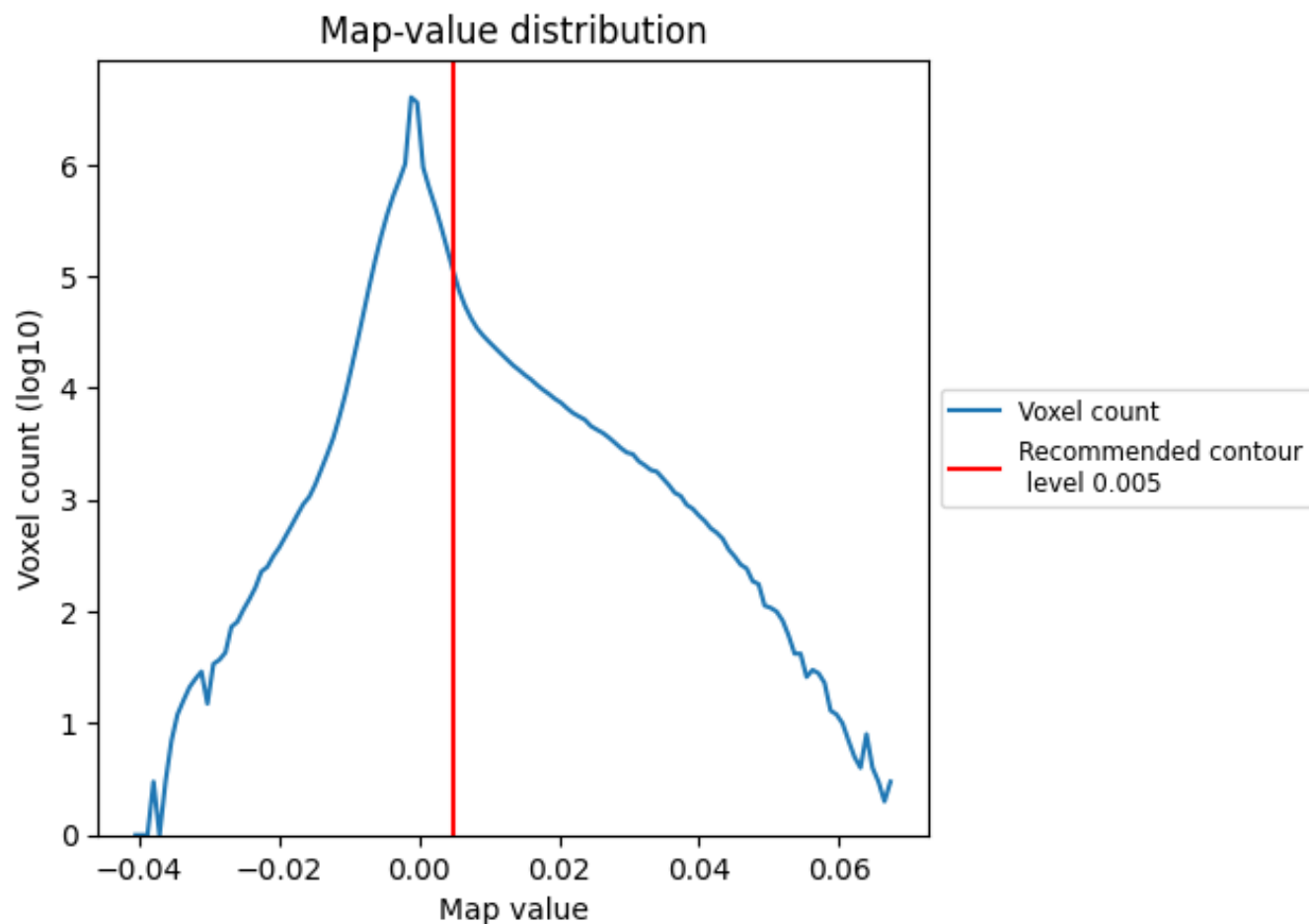
6.6 Mask visualisation [i](#)

This section was not generated. No masks/segmentation were deposited.

7 Map analysis [i](#)

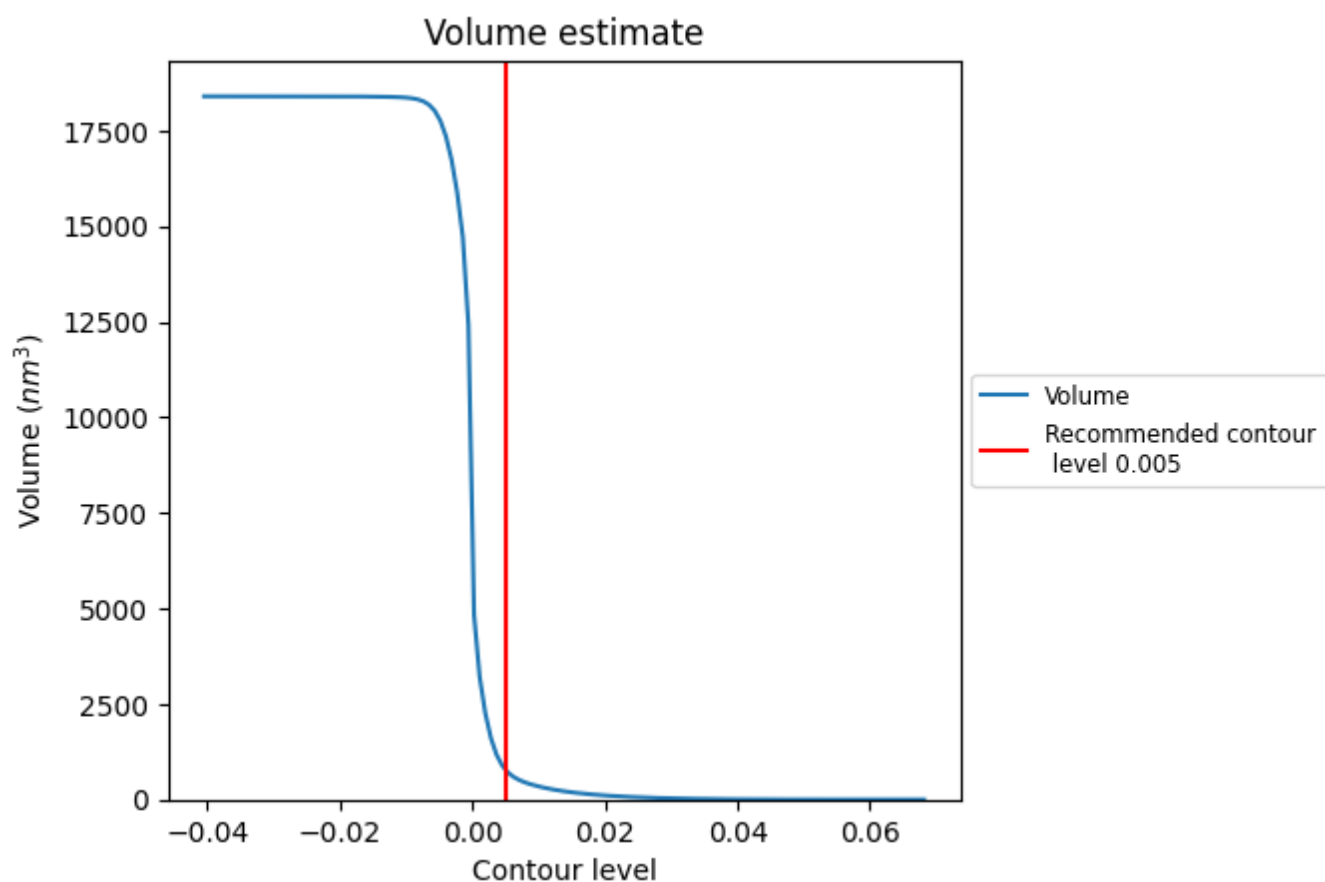
This section contains the results of statistical analysis of the map.

7.1 Map-value distribution [i](#)



The map-value distribution is plotted in 128 intervals along the x-axis. The y-axis is logarithmic. A spike in this graph at zero usually indicates that the volume has been masked.

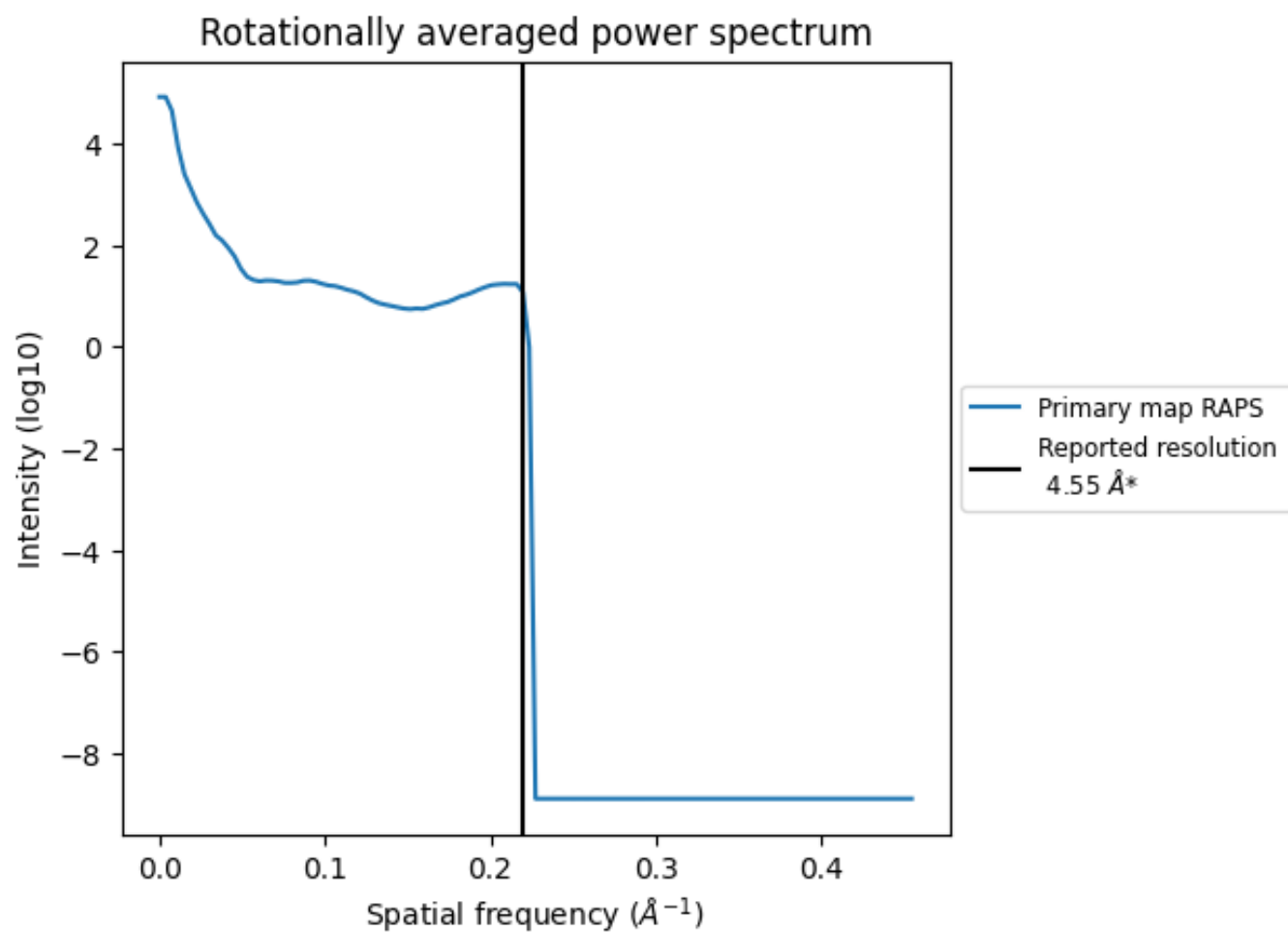
7.2 Volume estimate [i](#)



The volume at the recommended contour level is 793 nm³; this corresponds to an approximate mass of 717 kDa.

The volume estimate graph shows how the enclosed volume varies with the contour level. The recommended contour level is shown as a vertical line and the intersection between the line and the curve gives the volume of the enclosed surface at the given level.

7.3 Rotationally averaged power spectrum ⓘ



*Reported resolution corresponds to spatial frequency of 0.220 Å⁻¹

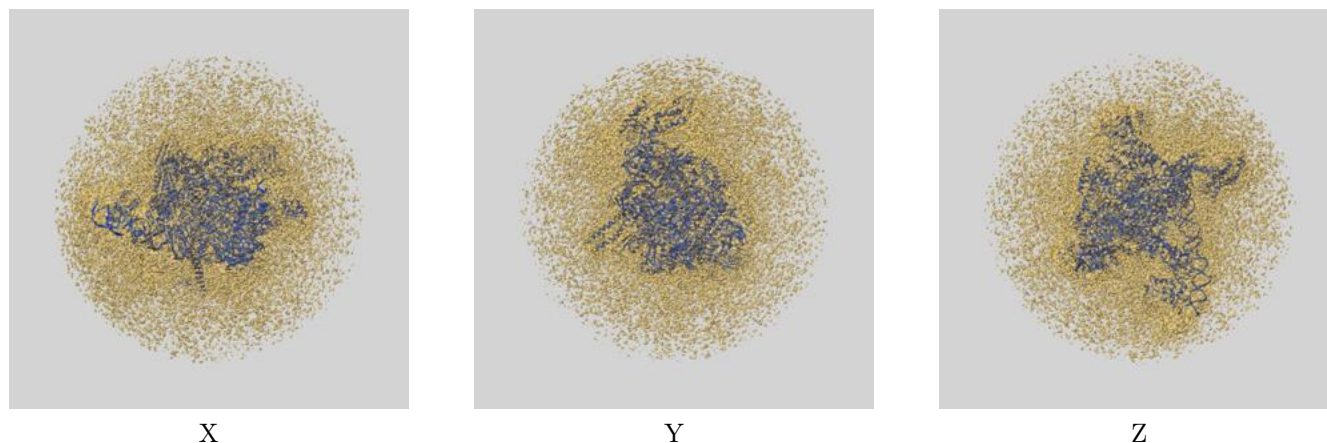
8 Fourier-Shell correlation ⓘ

This section was not generated. No FSC curve or half-maps provided.

9 Map-model fit [i](#)

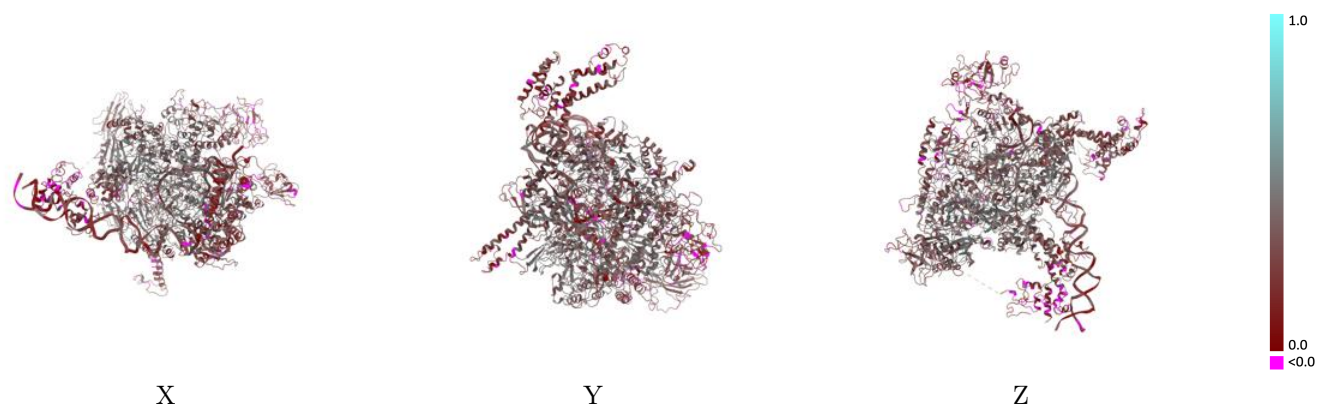
This section contains information regarding the fit between EMDB map EMD-32322 and PDB model 7W5W. Per-residue inclusion information can be found in [section 3](#) on [page 6](#).

9.1 Map-model overlay [i](#)



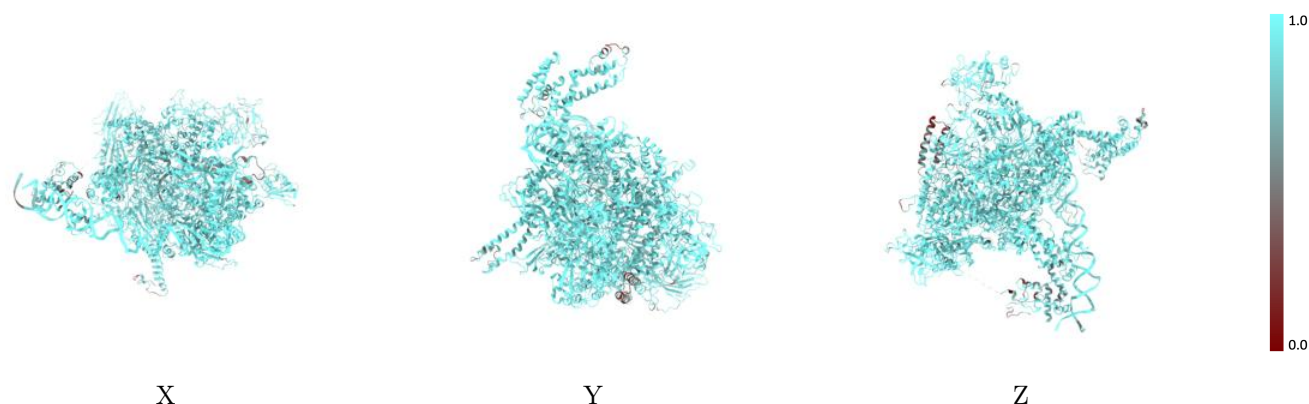
The images above show the 3D surface view of the map at the recommended contour level 0.005 at 50% transparency in yellow overlaid with a ribbon representation of the model coloured in blue. These images allow for the visual assessment of the quality of fit between the atomic model and the map.

9.2 Q-score mapped to coordinate model [i](#)



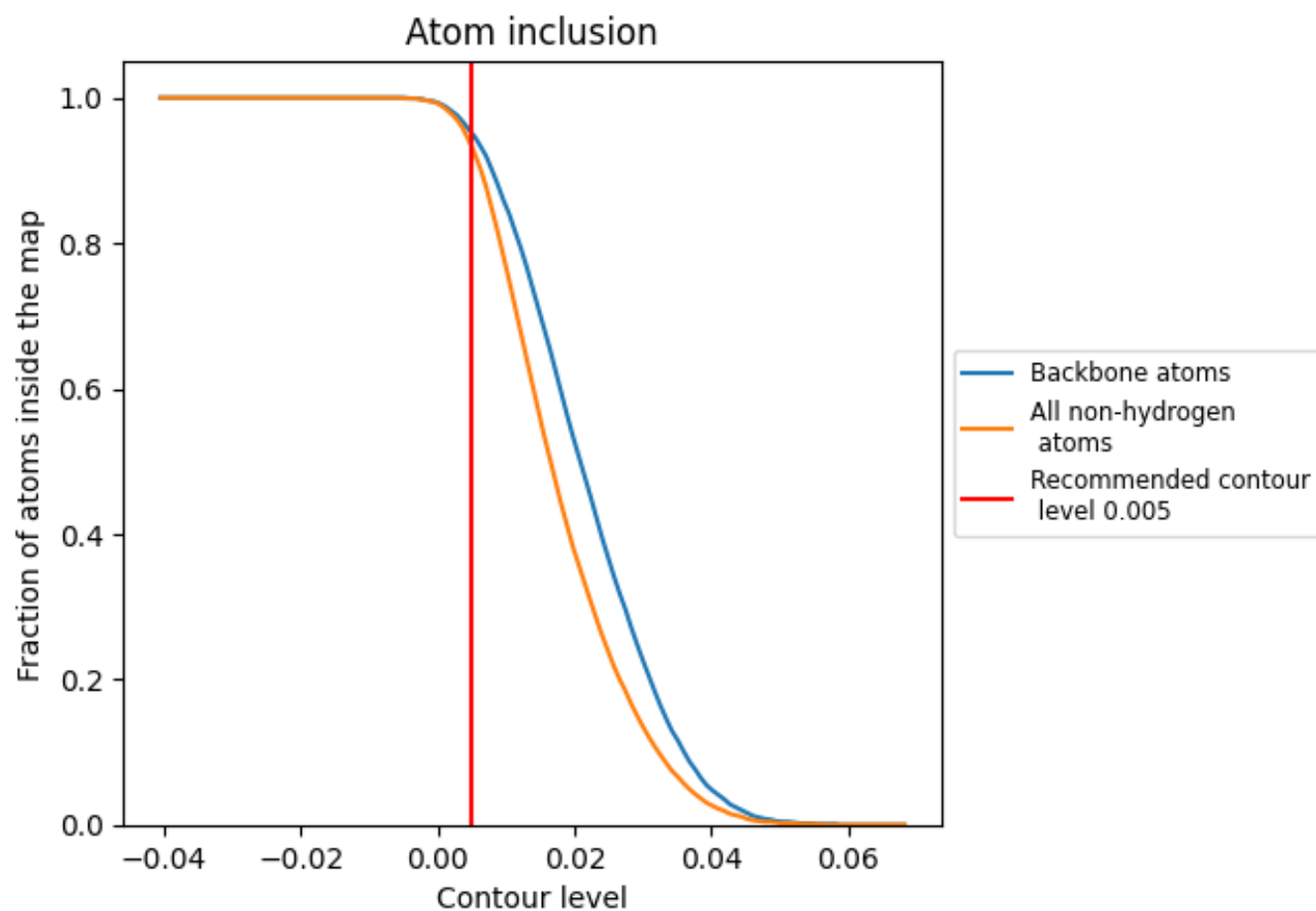
The images above show the model with each residue coloured according its Q-score. This shows their resolvability in the map with higher Q-score values reflecting better resolvability. Please note: Q-score is calculating the resolvability of atoms, and thus high values are only expected at resolutions at which atoms can be resolved. Low Q-score values may therefore be expected for many entries.

9.3 Atom inclusion mapped to coordinate model [i](#)



The images above show the model with each residue coloured according to its atom inclusion. This shows to what extent they are inside the map at the recommended contour level (0.005).

9.4 Atom inclusion [i](#)



At the recommended contour level, 95% of all backbone atoms, 93% of all non-hydrogen atoms, are inside the map.

9.5 Map-model fit summary ⓘ

The table lists the average atom inclusion at the recommended contour level (0.005) and Q-score for the entire model and for each chain.

Chain	Atom inclusion	Q-score
All	<div><div></div>0.9330</div>	<div><div></div>0.3320</div>
1	<div><div></div>0.9580</div>	<div><div></div>0.2510</div>
2	<div><div></div>0.9010</div>	<div><div></div>0.2420</div>
A	<div><div></div>0.8910</div>	<div><div></div>0.3260</div>
B	<div><div></div>0.9560</div>	<div><div></div>0.3410</div>
C	<div><div></div>0.9550</div>	<div><div></div>0.3760</div>
D	<div><div></div>0.9250</div>	<div><div></div>0.3420</div>
E	<div><div></div>0.9480</div>	<div><div></div>0.3640</div>
F	<div><div></div>0.9190</div>	<div><div></div>0.2740</div>
J	<div><div></div>0.8850</div>	<div><div></div>0.1670</div>

1.0

0.0

<0.0