



wwPDB X-ray Structure Validation Summary Report ⓘ

Nov 11, 2024 – 09:46 AM EST

PDB ID : 3WE7
Title : Crystal Structure of Diacetylchitobiose Deacetylase from *Pyrococcus horikoshii*
Authors : Mine, S.; Nakamura, T.; Fukuda, Y.; Inoue, T.; Uegaki, K.; Sato, T.
Deposited on : 2013-07-01
Resolution : 1.55 Å(reported)

This is a wwPDB X-ray Structure Validation Summary Report for a publicly released PDB entry.

We welcome your comments at validation@mail.wwpdb.org

A user guide is available at

<https://www.wwpdb.org/validation/2017/XrayValidationReportHelp>

with specific help available everywhere you see the ⓘ symbol.

The types of validation reports are described at

<http://www.wwpdb.org/validation/2017/FAQs#types>.

The following versions of software and data (see [references ⓘ](#)) were used in the production of this report:

MolProbity	:	4.02b-467
Mogul	:	2022.3.0, CSD as543be (2022)
Xtriage (Phenix)	:	1.20.1
EDS	:	3.0
Percentile statistics	:	20231227.v01 (using entries in the PDB archive December 27th 2023)
CCP4	:	9.0.003 (Gargrove)
Density-Fitness	:	1.0.11
Ideal geometry (proteins)	:	Engh & Huber (2001)
Ideal geometry (DNA, RNA)	:	Parkinson et al. (1996)
Validation Pipeline (wwPDB-VP)	:	2.39

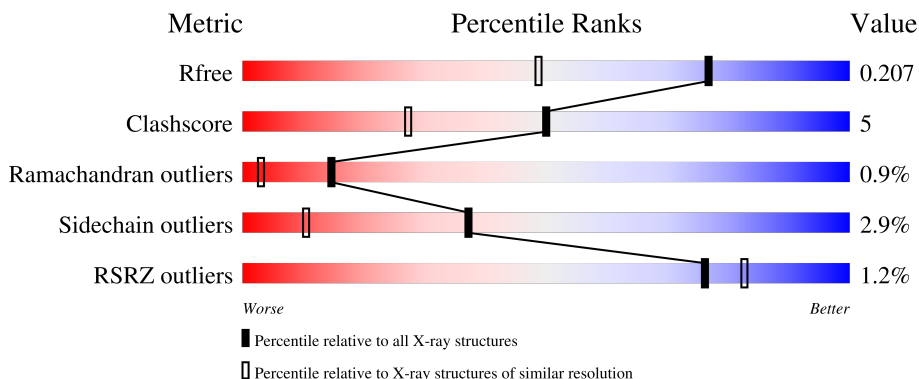
1 Overall quality at a glance

The following experimental techniques were used to determine the structure:

X-RAY DIFFRACTION

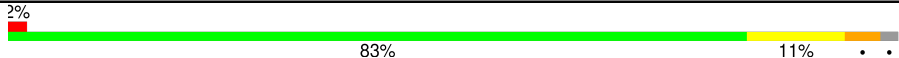
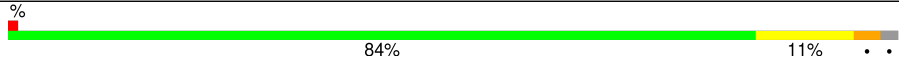

The reported resolution of this entry is 1.55 Å.

Percentile scores (ranging between 0-100) for global validation metrics of the entry are shown in the following graphic. The table shows the number of entries on which the scores are based.



Metric	Whole archive (#Entries)	Similar resolution (#Entries, resolution range(Å))
R_{free}	164625	1935 (1.56-1.56)
Clashscore	180529	2073 (1.56-1.56)
Ramachandran outliers	177936	2037 (1.56-1.56)
Sidechain outliers	177891	2034 (1.56-1.56)
RSRZ outliers	164620	1935 (1.56-1.56)

The table below summarises the geometric issues observed across the polymeric chains and their fit to the electron density. The red, orange, yellow and green segments of the lower bar indicate the fraction of residues that contain outliers for ≥ 3 , 2, 1 and 0 types of geometric quality criteria respectively. A grey segment represents the fraction of residues that are not modelled. The numeric value for each fraction is indicated below the corresponding segment, with a dot representing fractions $\leq 5\%$. The upper red bar (where present) indicates the fraction of residues that have poor fit to the electron density. The numeric value is given above the bar.

Mol	Chain	Length	Quality of chain
1	A	272	
1	B	272	
1	C	272	

The following table lists non-polymeric compounds, carbohydrate monomers and non-standard residues in protein, DNA, RNA chains that are outliers for geometric or electron-density-fit criteria:

Mol	Type	Chain	Res	Chirality	Geometry	Clashes	Electron density
3	GOL	A	302	-	X	X	-
3	GOL	B	302	-	X	-	-
3	GOL	C	303	-	X	X	-
6	HEZ	B	306	-	-	X	-

2 Entry composition

There are 7 unique types of molecules in this entry. The entry contains 7295 atoms, of which 0 are hydrogens and 0 are deuteriums.

In the tables below, the ZeroOcc column contains the number of atoms modelled with zero occupancy, the AltConf column contains the number of residues with at least one atom in alternate conformation and the Trace column contains the number of residues modelled with at most 2 atoms.

- Molecule 1 is a protein called Putative uncharacterized protein PH0499.

Mol	Chain	Residues	Atoms					ZeroOcc	AltConf	Trace
1	A	267	Total	C	N	O	S	0	6	0
			2235	1437	367	420	11			
1	B	267	Total	C	N	O	S	0	4	0
			2219	1429	363	416	11			
1	C	267	Total	C	N	O	S	0	2	0
			2204	1421	361	411	11			

- Molecule 2 is ZINC ION (three-letter code: ZN) (formula: Zn).

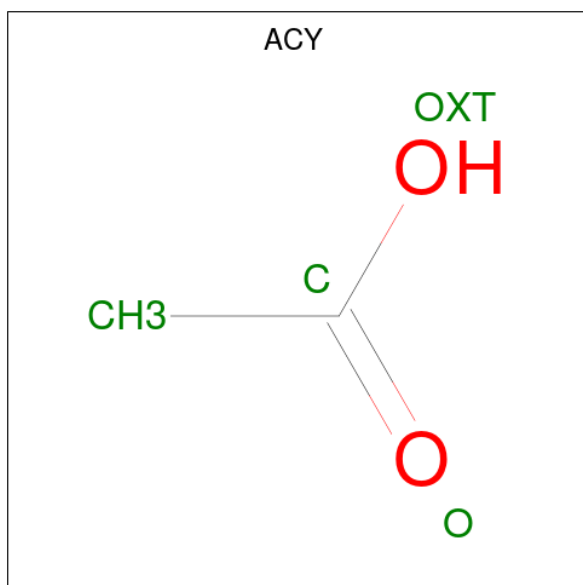
Mol	Chain	Residues	Atoms		ZeroOcc	AltConf
2	A	1	Total	Zn	0	0
			1	1		
2	B	1	Total	Zn	0	0
			1	1		
2	C	1	Total	Zn	0	0
			1	1		

- Molecule 3 is GLYCEROL (three-letter code: GOL) (formula: C₃H₈O₃).



Mol	Chain	Residues	Atoms			ZeroOcc	AltConf
3	A	1	Total	C	O	0	0
			6	3	3		
3	B	1	Total	C	O	0	0
			6	3	3		
3	B	1	Total	C	O	0	1
			18	9	9		
3	C	1	Total	C	O	0	0
			6	3	3		

- Molecule 4 is ACETIC ACID (three-letter code: ACY) (formula: $C_2H_4O_2$).

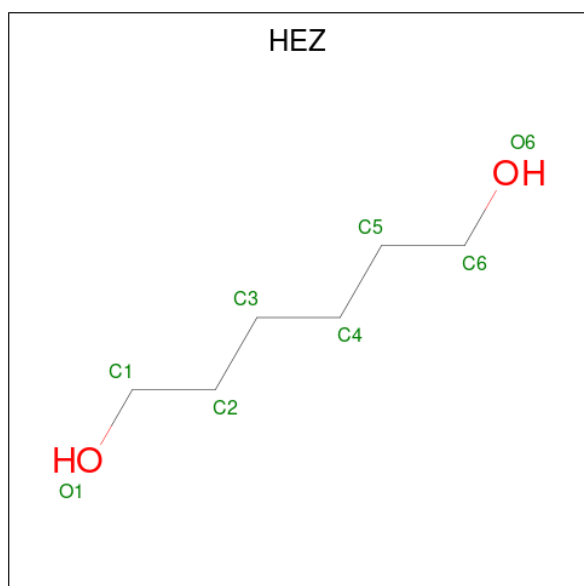


Mol	Chain	Residues	Atoms	ZeroOcc	AltConf
4	A	1	Total C O 4 2 2	0	0
4	B	1	Total C O 4 2 2	0	0
4	C	1	Total C O 4 2 2	0	0

- Molecule 5 is SODIUM ION (three-letter code: NA) (formula: Na).

Mol	Chain	Residues	Atoms	ZeroOcc	AltConf
5	B	1	Total Na 1 1	0	0
5	C	1	Total Na 1 1	0	0

- Molecule 6 is HEXANE-1,6-DIOL (three-letter code: HEZ) (formula: C₆H₁₄O₂).



Mol	Chain	Residues	Atoms	ZeroOcc	AltConf
6	B	1	Total C O 8 6 2	0	0
6	B	1	Total C O 8 6 2	0	0
6	C	1	Total C O 8 6 2	0	0
6	C	1	Total C O 8 6 2	0	0

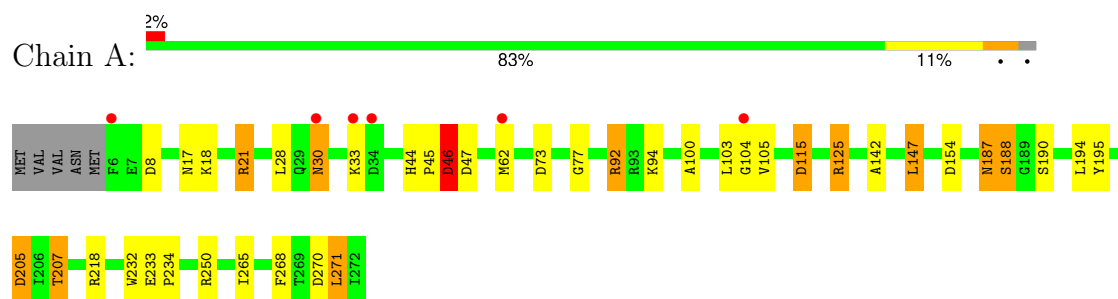
- Molecule 7 is water.

Mol	Chain	Residues	Atoms		ZeroOcc	AltConf
7	A	205	Total 207	O 207	0	2
7	B	175	Total 178	O 178	0	3
7	C	167	Total 167	O 167	0	0

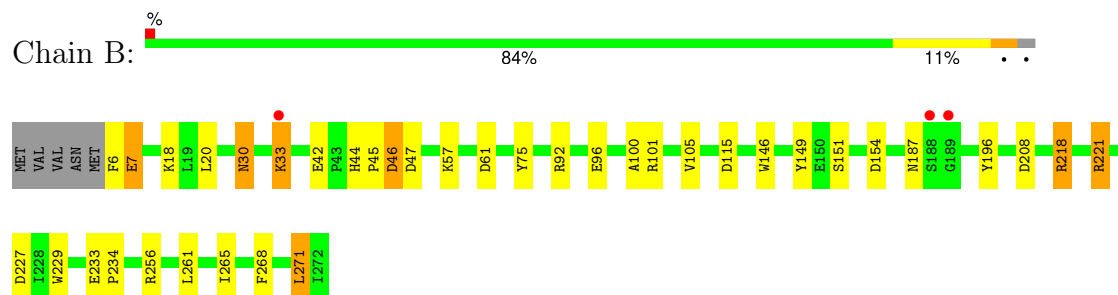
3 Residue-property plots [i](#)

These plots are drawn for all protein, RNA, DNA and oligosaccharide chains in the entry. The first graphic for a chain summarises the proportions of the various outlier classes displayed in the second graphic. The second graphic shows the sequence view annotated by issues in geometry and electron density. Residues are color-coded according to the number of geometric quality criteria for which they contain at least one outlier: green = 0, yellow = 1, orange = 2 and red = 3 or more. A red dot above a residue indicates a poor fit to the electron density ($RSRZ > 2$). Stretches of 2 or more consecutive residues without any outlier are shown as a green connector. Residues present in the sample, but not in the model, are shown in grey.

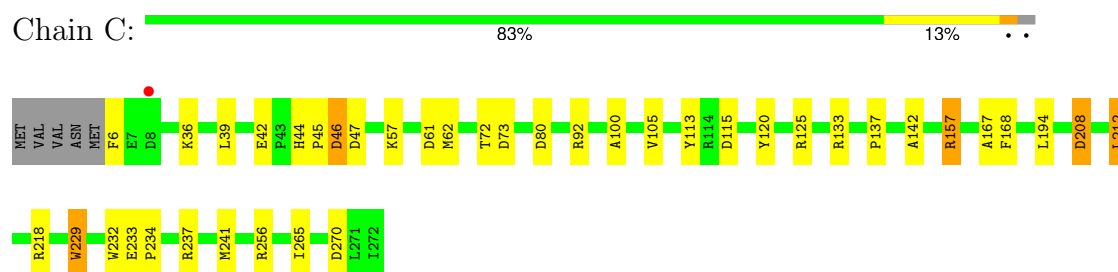
• Molecule 1: Putative uncharacterized protein PH0499



• Molecule 1: Putative uncharacterized protein PH0499



• Molecule 1: Putative uncharacterized protein PH0499



4 Data and refinement statistics

Property	Value	Source
Space group	P 32 2 1	Depositor
Cell constants a, b, c, α , β , γ	77.37Å 77.37Å 230.22Å 90.00° 90.00° 120.00°	Depositor
Resolution (Å)	29.62 – 1.55 29.62 – 1.55	Depositor EDS
% Data completeness (in resolution range)	98.4 (29.62-1.55) 98.5 (29.62-1.55)	Depositor EDS
R_{merge}	(Not available)	Depositor
R_{sym}	(Not available)	Depositor
$\langle I/\sigma(I) \rangle$ ¹	2.58 (at 1.54Å)	Xtriage
Refinement program	REFMAC 5.6.0117	Depositor
R, R_{free}	0.173 , 0.207 0.172 , 0.207	Depositor DCC
R_{free} test set	5850 reflections (5.01%)	wwPDB-VP
Wilson B-factor (Å ²)	17.5	Xtriage
Anisotropy	0.130	Xtriage
Bulk solvent k_{sol} (e/Å ³), B_{sol} (Å ²)	0.34 , 32.1	EDS
L-test for twinning ²	$\langle L \rangle = 0.49$, $\langle L^2 \rangle = 0.32$	Xtriage
Estimated twinning fraction	0.024 for -h,-k,l	Xtriage
F_o, F_c correlation	0.97	EDS
Total number of atoms	7295	wwPDB-VP
Average B, all atoms (Å ²)	25.0	wwPDB-VP

Xtriage's analysis on translational NCS is as follows: *The largest off-origin peak in the Patterson function is 5.35% of the height of the origin peak. No significant pseudotranslation is detected.*

¹Intensities estimated from amplitudes.

²Theoretical values of $\langle |L| \rangle$, $\langle L^2 \rangle$ for acentric reflections are 0.5, 0.333 respectively for untwinned datasets, and 0.375, 0.2 for perfectly twinned datasets.

5 Model quality

5.1 Standard geometry

Bond lengths and bond angles in the following residue types are not validated in this section: ZN, GOL, NA, HEZ, ACY

The Z score for a bond length (or angle) is the number of standard deviations the observed value is removed from the expected value. A bond length (or angle) with $|Z| > 5$ is considered an outlier worth inspection. RMSZ is the root-mean-square of all Z scores of the bond lengths (or angles).

Mol	Chain	Bond lengths		Bond angles	
		RMSZ	$\# Z > 5$	RMSZ	$\# Z > 5$
1	A	1.19	3/2294 (0.1%)	1.22	19/3105 (0.6%)
1	B	1.24	4/2278 (0.2%)	1.24	16/3084 (0.5%)
1	C	1.19	3/2263 (0.1%)	1.24	14/3063 (0.5%)
All	All	1.21	10/6835 (0.1%)	1.23	49/9252 (0.5%)

Chiral center outliers are detected by calculating the chiral volume of a chiral center and verifying if the center is modelled as a planar moiety or with the opposite hand. A planarity outlier is detected by checking planarity of atoms in a peptide group, atoms in a mainchain group or atoms of a sidechain that are expected to be planar.

Mol	Chain	#Chirality outliers	#Planarity outliers
1	A	0	2

The worst 5 of 10 bond length outliers are listed below:

Mol	Chain	Res	Type	Atoms	Z	Observed(Å)	Ideal(Å)
1	A	104	GLY	N-CA	7.86	1.57	1.46
1	B	208	ASP	CB-CG	6.06	1.64	1.51
1	B	146	TRP	NE1-CE2	-5.91	1.29	1.37
1	A	92	ARG	CZ-NH1	5.81	1.40	1.33
1	C	232	TRP	CD2-CE2	5.42	1.47	1.41

The worst 5 of 49 bond angle outliers are listed below:

Mol	Chain	Res	Type	Atoms	Z	Observed(°)	Ideal(°)
1	C	61	ASP	CB-CG-OD2	-12.74	106.83	118.30
1	A	103	LEU	C-N-CA	-11.96	97.17	122.30
1	B	101	ARG	NE-CZ-NH1	10.64	125.62	120.30
1	C	125	ARG	NE-CZ-NH1	9.23	124.91	120.30
1	C	125	ARG	NE-CZ-NH2	-8.50	116.05	120.30

There are no chirality outliers.

All (2) planarity outliers are listed below:

Mol	Chain	Res	Type	Group
1	A	125	ARG	Sidechain
1	A	190[B]	SER	Peptide

5.2 Too-close contacts ⓘ

In the following table, the Non-H and H(model) columns list the number of non-hydrogen atoms and hydrogen atoms in the chain respectively. The H(added) column lists the number of hydrogen atoms added and optimized by MolProbity. The Clashes column lists the number of clashes within the asymmetric unit, whereas Symm-Clashes lists symmetry-related clashes.

Mol	Chain	Non-H	H(model)	H(added)	Clashes	Symm-Clashes
1	A	2235	0	2168	22	0
1	B	2219	0	2159	21	0
1	C	2204	0	2149	24	0
2	A	1	0	0	0	0
2	B	1	0	0	0	0
2	C	1	0	0	0	0
3	A	6	0	8	7	0
3	B	24	0	31	4	0
3	C	6	0	8	8	0
4	A	4	0	3	0	0
4	B	4	0	3	0	0
4	C	4	0	3	0	0
5	B	1	0	0	0	0
5	C	1	0	0	0	0
6	B	16	0	28	6	0
6	C	16	0	28	4	0
7	A	207	0	0	0	0
7	B	178	0	0	4	0
7	C	167	0	0	4	0
All	All	7295	0	6588	70	0

The all-atom clashscore is defined as the number of clashes found per 1000 atoms (including hydrogen atoms). The all-atom clashscore for this structure is 5.

The worst 5 of 70 close contacts within the same asymmetric unit are listed below, sorted by their clash magnitude.

Atom-1	Atom-2	Interatomic distance (Å)	Clash overlap (Å)
3:B:303[C]:GOL:O3	7:B:459:HOH:O	1.63	1.11
1:C:92:ARG:HH12	3:C:303:GOL:H32	1.03	1.08
1:A:92:ARG:HH12	3:A:302:GOL:H11	0.93	1.07
1:A:92:ARG:NH1	3:A:302:GOL:H11	1.77	0.98
1:B:30:ASN:O	1:B:33:LYS:HG3	1.69	0.91

There are no symmetry-related clashes.

5.3 Torsion angles [i](#)

5.3.1 Protein backbone [i](#)

In the following table, the Percentiles column shows the percent Ramachandran outliers of the chain as a percentile score with respect to all X-ray entries followed by that with respect to entries of similar resolution.

The Analysed column shows the number of residues for which the backbone conformation was analysed, and the total number of residues.

Mol	Chain	Analysed	Favoured	Allowed	Outliers	Percentiles	
1	A	271/272 (100%)	258 (95%)	10 (4%)	3 (1%)	12	2
1	B	269/272 (99%)	264 (98%)	3 (1%)	2 (1%)	19	5
1	C	267/272 (98%)	263 (98%)	2 (1%)	2 (1%)	19	5
All	All	807/816 (99%)	785 (97%)	15 (2%)	7 (1%)	14	3

5 of 7 Ramachandran outliers are listed below:

Mol	Chain	Res	Type
1	A	188	SER
1	A	46	ASP
1	B	46	ASP
1	C	46	ASP
1	A	265	ILE

5.3.2 Protein sidechains [i](#)

In the following table, the Percentiles column shows the percent sidechain outliers of the chain as a percentile score with respect to all X-ray entries followed by that with respect to entries of similar resolution.

The Analysed column shows the number of residues for which the sidechain conformation was

analysed, and the total number of residues.

Mol	Chain	Analysed	Rotameric	Outliers	Percentiles
1	A	245/244 (100%)	235 (96%)	10 (4%)	26 4
1	B	243/244 (100%)	234 (96%)	9 (4%)	29 5
1	C	241/244 (99%)	237 (98%)	4 (2%)	56 29
All	All	729/732 (100%)	706 (97%)	23 (3%)	37 8

5 of 23 residues with a non-rotameric sidechain are listed below:

Mol	Chain	Res	Type
1	B	75	TYR
1	B	221	ARG
1	B	218	ARG
1	B	271	LEU
1	A	187[A]	ASN

Sometimes sidechains can be flipped to improve hydrogen bonding and reduce clashes. All (2) such sidechains are listed below:

Mol	Chain	Res	Type
1	B	30	ASN
1	B	187	ASN

5.3.3 RNA [i](#)

There are no RNA molecules in this entry.

5.4 Non-standard residues in protein, DNA, RNA chains [i](#)

There are no non-standard protein/DNA/RNA residues in this entry.

5.5 Carbohydrates [i](#)

There are no oligosaccharides in this entry.

5.6 Ligand geometry [i](#)

Of 18 ligands modelled in this entry, 5 are monoatomic - leaving 13 for Mogul analysis.

In the following table, the Counts columns list the number of bonds (or angles) for which Mogul statistics could be retrieved, the number of bonds (or angles) that are observed in the model and the number of bonds (or angles) that are defined in the Chemical Component Dictionary. The Link column lists molecule types, if any, to which the group is linked. The Z score for a bond length (or angle) is the number of standard deviations the observed value is removed from the expected value. A bond length (or angle) with $|Z| > 2$ is considered an outlier worth inspection. RMSZ is the root-mean-square of all Z scores of the bond lengths (or angles).

Mol	Type	Chain	Res	Link	Bond lengths			Bond angles		
					Counts	RMSZ	# $ Z > 2$	Counts	RMSZ	# $ Z > 2$
3	GOL	B	303[C]	-	5,5,5	0.73	0	5,5,5	0.90	0
3	GOL	A	302	-	5,5,5	2.63	3 (60%)	5,5,5	2.65	3 (60%)
3	GOL	B	303[A]	-	5,5,5	0.44	0	5,5,5	0.92	0
3	GOL	C	303	-	5,5,5	1.97	3 (60%)	5,5,5	2.51	2 (40%)
4	ACY	B	304	2	3,3,3	1.40	0	3,3,3	0.73	0
6	HEZ	C	306	-	7,7,7	0.34	0	6,6,6	0.74	0
3	GOL	B	303[B]	-	5,5,5	0.75	0	5,5,5	0.36	0
4	ACY	C	302	2	3,3,3	1.03	0	3,3,3	1.14	0
3	GOL	B	302	-	5,5,5	2.27	3 (60%)	5,5,5	3.73	5 (100%)
6	HEZ	B	307	-	7,7,7	0.33	0	6,6,6	1.16	0
4	ACY	A	303	2	3,3,3	1.15	0	3,3,3	0.51	0
6	HEZ	B	306	-	7,7,7	0.29	0	6,6,6	0.74	0
6	HEZ	C	305	-	7,7,7	0.39	0	6,6,6	1.33	1 (16%)

In the following table, the Chirals column lists the number of chiral outliers, the number of chiral centers analysed, the number of these observed in the model and the number defined in the Chemical Component Dictionary. Similar counts are reported in the Torsion and Rings columns. '-' means no outliers of that kind were identified.

Mol	Type	Chain	Res	Link	Chirals	Torsions	Rings
3	GOL	B	303[C]	-	-	4/4/4/4	-
3	GOL	A	302	-	-	2/4/4/4	-
3	GOL	B	303[A]	-	-	4/4/4/4	-
3	GOL	C	303	-	-	1/4/4/4	-
6	HEZ	C	306	-	-	3/5/5/5	-
3	GOL	B	303[B]	-	-	1/4/4/4	-
3	GOL	B	302	-	-	3/4/4/4	-
6	HEZ	B	307	-	-	3/5/5/5	-
6	HEZ	B	306	-	-	5/5/5/5	-
6	HEZ	C	305	-	-	3/5/5/5	-

The worst 5 of 9 bond length outliers are listed below:

Mol	Chain	Res	Type	Atoms	Z	Observed(Å)	Ideal(Å)
3	A	302	GOL	O3-C3	4.09	1.59	1.42
3	A	302	GOL	O2-C2	3.64	1.53	1.43
3	B	302	GOL	O2-C2	3.10	1.52	1.43
3	B	302	GOL	O1-C1	3.02	1.55	1.42
3	C	303	GOL	O1-C1	2.93	1.54	1.42

The worst 5 of 11 bond angle outliers are listed below:

Mol	Chain	Res	Type	Atoms	Z	Observed(°)	Ideal(°)
3	B	302	GOL	O2-C2-C1	5.20	130.70	109.18
3	C	303	GOL	O1-C1-C2	3.81	127.51	110.38
3	B	302	GOL	O2-C2-C3	-3.78	93.55	109.18
3	A	302	GOL	O3-C3-C2	3.60	126.57	110.38
3	A	302	GOL	O2-C2-C3	3.59	124.04	109.18

There are no chirality outliers.

5 of 29 torsion outliers are listed below:

Mol	Chain	Res	Type	Atoms
3	B	302	GOL	C1-C2-C3-O3
3	B	302	GOL	O2-C2-C3-O3
3	B	303[A]	GOL	C1-C2-C3-O3
3	B	303[C]	GOL	O1-C1-C2-C3
3	B	303[C]	GOL	C1-C2-C3-O3

There are no ring outliers.

8 monomers are involved in 29 short contacts:

Mol	Chain	Res	Type	Clashes	Symm-Clashes
3	B	303[C]	GOL	1	0
3	A	302	GOL	7	0
3	B	303[A]	GOL	1	0
3	C	303	GOL	8	0
6	C	306	HEZ	2	0
3	B	302	GOL	2	0
6	B	306	HEZ	6	0
6	C	305	HEZ	2	0

5.7 Other polymers

There are no such residues in this entry.

5.8 Polymer linkage issues ⓘ

There are no chain breaks in this entry.

6 Fit of model and data [i](#)

6.1 Protein, DNA and RNA chains [i](#)

In the following table, the column labelled ‘#RSRZ> 2’ contains the number (and percentage) of RSRZ outliers, followed by percent RSRZ outliers for the chain as percentile scores relative to all X-ray entries and entries of similar resolution. The OWAB column contains the minimum, median, 95th percentile and maximum values of the occupancy-weighted average B-factor per residue. The column labelled ‘Q< 0.9’ lists the number of (and percentage) of residues with an average occupancy less than 0.9.

Mol	Chain	Analysed	<RSRZ>	#RSRZ>2	OWAB(Å ²)	Q<0.9
1	A	267/272 (98%)	0.03	6 (2%) 62 70	10, 23, 46, 76	6 (2%)
1	B	267/272 (98%)	-0.31	3 (1%) 77 84	8, 19, 39, 66	4 (1%)
1	C	267/272 (98%)	-0.22	1 (0%) 89 92	9, 22, 37, 57	2 (0%)
All	All	801/816 (98%)	-0.17	10 (1%) 76 82	8, 21, 42, 76	12 (1%)

The worst 5 of 10 RSRZ outliers are listed below:

Mol	Chain	Res	Type	RSRZ
1	A	6	PHE	4.1
1	B	188	SER	3.2
1	B	189	GLY	2.7
1	A	33	LYS	2.6
1	A	34	ASP	2.6

6.2 Non-standard residues in protein, DNA, RNA chains [i](#)

There are no non-standard protein/DNA/RNA residues in this entry.

6.3 Carbohydrates [i](#)

There are no monosaccharides in this entry.

6.4 Ligands [i](#)

In the following table, the Atoms column lists the number of modelled atoms in the group and the number defined in the chemical component dictionary. The B-factors column lists the minimum, median, 95th percentile and maximum values of B factors of atoms in the group. The column labelled ‘Q< 0.9’ lists the number of atoms with occupancy less than 0.9.

Mol	Type	Chain	Res	Atoms	RSCC	RSR	B-factors(\AA^2)	Q<0.9
3	GOL	B	303[A]	6/6	0.71	0.14	13,17,18,19	6
3	GOL	B	303[B]	6/6	0.71	0.14	16,21,24,30	6
3	GOL	B	303[C]	6/6	0.71	0.14	15,20,26,29	6
6	HEZ	B	307	8/8	0.81	0.13	41,44,49,49	0
6	HEZ	C	306	8/8	0.84	0.15	41,48,56,61	0
6	HEZ	B	306	8/8	0.87	0.12	49,51,53,53	0
3	GOL	A	302	6/6	0.89	0.14	19,27,30,45	0
6	HEZ	C	305	8/8	0.89	0.11	31,37,42,43	0
3	GOL	B	302	6/6	0.89	0.12	22,30,33,34	0
3	GOL	C	303	6/6	0.90	0.12	26,38,41,55	0
4	ACY	B	304	4/4	0.92	0.12	22,26,28,28	0
5	NA	B	305	1/1	0.93	0.08	32,32,32,32	0
4	ACY	C	302	4/4	0.95	0.09	23,27,30,30	0
4	ACY	A	303	4/4	0.96	0.08	21,29,29,30	0
5	NA	C	304	1/1	0.97	0.07	30,30,30,30	0
2	ZN	A	301	1/1	1.00	0.03	20,20,20,20	0
2	ZN	B	301	1/1	1.00	0.02	17,17,17,17	0
2	ZN	C	301	1/1	1.00	0.04	21,21,21,21	0

6.5 Other polymers [i](#)

There are no such residues in this entry.