



Full wwPDB X-ray Structure Validation Report ⓘ

Jun 16, 2024 – 12:39 PM EDT

PDB ID : 4X7M
Title : Crystal structure of S. aureus TarM G117R mutant in complex with UDP and UDP-GlcNAc
Authors : Worrall, L.J.; Sobhanifar, S.; Strynadka, N.C.
Deposited on : 2014-12-09
Resolution : 2.40 Å(reported)

This is a Full wwPDB X-ray Structure Validation Report for a publicly released PDB entry.

We welcome your comments at validation@mail.wwpdb.org

A user guide is available at

<https://www.wwpdb.org/validation/2017/XrayValidationReportHelp>

with specific help available everywhere you see the ⓘ symbol.

The types of validation reports are described at

<http://www.wwpdb.org/validation/2017/FAQs#types>.

The following versions of software and data (see [references ⓘ](#)) were used in the production of this report:

MolProbity	:	4.02b-467
Mogul	:	1.8.5 (274361), CSD as541be (2020)
Xtriage (Phenix)	:	1.13
EDS	:	2.37.1
buster-report	:	1.1.7 (2018)
Percentile statistics	:	20191225.v01 (using entries in the PDB archive December 25th 2019)
Refmac	:	5.8.0158
CCP4	:	7.0.044 (Gargrove)
Ideal geometry (proteins)	:	Engh & Huber (2001)
Ideal geometry (DNA, RNA)	:	Parkinson et al. (1996)
Validation Pipeline (wwPDB-VP)	:	2.37.1

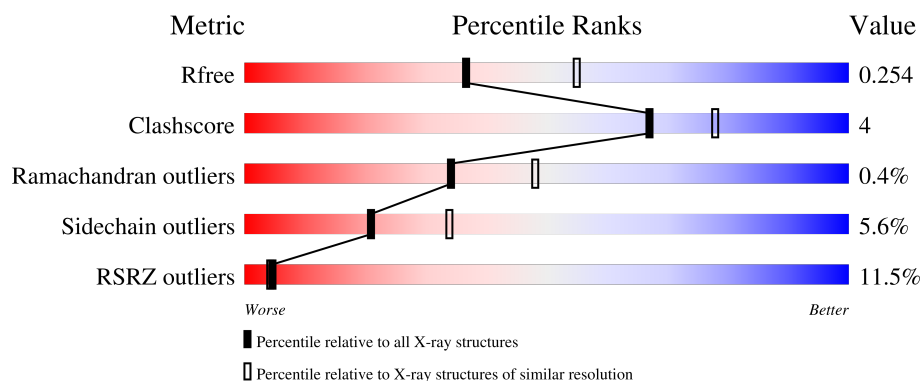
1 Overall quality at a glance

The following experimental techniques were used to determine the structure:

X-RAY DIFFRACTION

The reported resolution of this entry is 2.40 Å.

Percentile scores (ranging between 0-100) for global validation metrics of the entry are shown in the following graphic. The table shows the number of entries on which the scores are based.



Metric	Whole archive (#Entries)	Similar resolution (#Entries, resolution range(Å))
R_{free}	130704	3907 (2.40-2.40)
Clashscore	141614	4398 (2.40-2.40)
Ramachandran outliers	138981	4318 (2.40-2.40)
Sidechain outliers	138945	4319 (2.40-2.40)
RSRZ outliers	127900	3811 (2.40-2.40)

The table below summarises the geometric issues observed across the polymeric chains and their fit to the electron density. The red, orange, yellow and green segments of the lower bar indicate the fraction of residues that contain outliers for ≥ 3 , 2, 1 and 0 types of geometric quality criteria respectively. A grey segment represents the fraction of residues that are not modelled. The numeric value for each fraction is indicated below the corresponding segment, with a dot representing fractions $\leq 5\%$. The upper red bar (where present) indicates the fraction of residues that have poor fit to the electron density. The numeric value is given above the bar.

Mol	Chain	Length	Quality of chain
1	A	493	<div> <div>4%</div> <div>86%</div> <div>13%</div> </div>
1	B	493	<div> <div>19%</div> <div>86%</div> <div>14%</div> </div>

2 Entry composition [i](#)

There are 4 unique types of molecules in this entry. The entry contains 8181 atoms, of which 0 are hydrogens and 0 are deuteriums.

In the tables below, the ZeroOcc column contains the number of atoms modelled with zero occupancy, the AltConf column contains the number of residues with at least one atom in alternate conformation and the Trace column contains the number of residues modelled with at most 2 atoms.

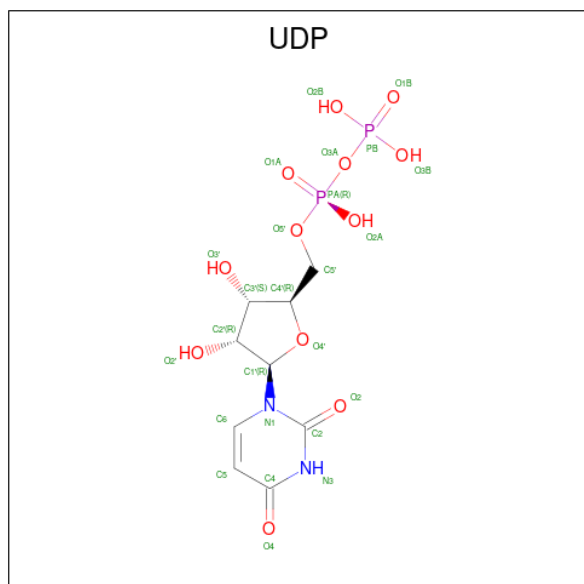
- Molecule 1 is a protein called TarM.

Mol	Chain	Residues	Atoms					ZeroOcc	AltConf	Trace
1	A	493	Total	C	N	O	S	0	0	0
			4024	2573	680	752	19			
1	B	493	Total	C	N	O	S	0	0	0
			4034	2582	681	752	19			

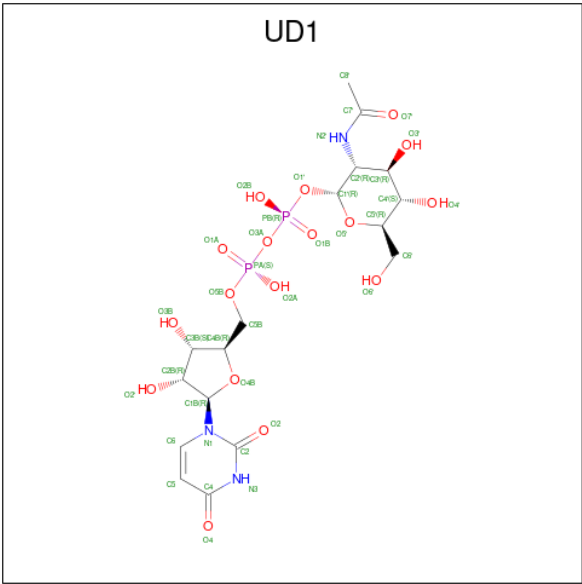
There are 2 discrepancies between the modelled and reference sequences:

Chain	Residue	Modelled	Actual	Comment	Reference
A	117	ARG	GLY	engineered mutation	UNP H0AM96
B	117	ARG	GLY	engineered mutation	UNP H0AM96

- Molecule 2 is URIDINE-5'-DIPHOSPHATE (three-letter code: UDP) (formula: $C_9H_{14}N_2O_{12}P_2$).



- Molecule 3 is URIDINE-DIPHOSPHATE-N-ACETYLGLUCOSAMINE (three-letter code: UD1) (formula: C₁₇H₂₇N₃O₁₇P₂).



Mol	Chain	Residues	Atoms					ZeroOcc	AltConf
			Total	C	N	O	P		
3	B	1	39	17	3	17	2	0	0

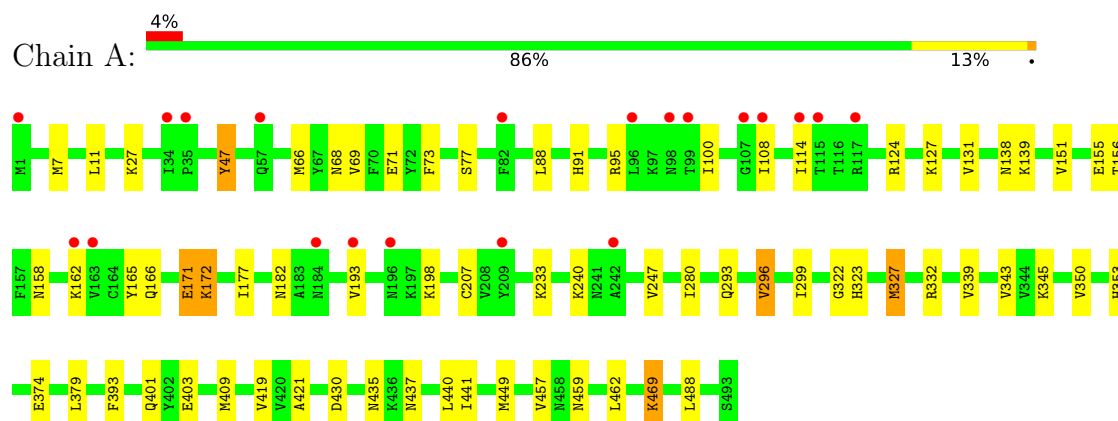
- Molecule 4 is water.

Mol	Chain	Residues	Atoms		ZeroOcc	AltConf
4	A	37	Total	O	0	0
			37	37		
4	B	22	Total	O	0	0
			22	22		

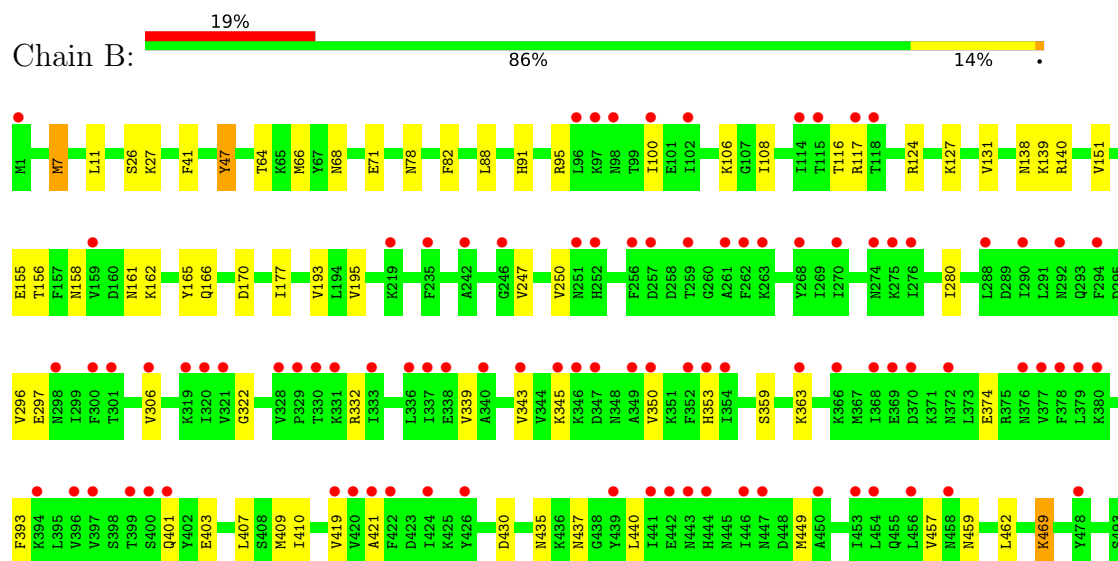
3 Residue-property plots [i](#)

These plots are drawn for all protein, RNA, DNA and oligosaccharide chains in the entry. The first graphic for a chain summarises the proportions of the various outlier classes displayed in the second graphic. The second graphic shows the sequence view annotated by issues in geometry and electron density. Residues are color-coded according to the number of geometric quality criteria for which they contain at least one outlier: green = 0, yellow = 1, orange = 2 and red = 3 or more. A red dot above a residue indicates a poor fit to the electron density ($RSRZ > 2$). Stretches of 2 or more consecutive residues without any outlier are shown as a green connector. Residues present in the sample, but not in the model, are shown in grey.

• Molecule 1: TarM



• Molecule 1: TarM



4 Data and refinement statistics

Property	Value	Source
Space group	P 1	Depositor
Cell constants a, b, c, α , β , γ	44.07Å 90.94Å 94.44Å 109.27° 99.03° 101.53°	Depositor
Resolution (Å)	46.04 – 2.40 46.04 – 2.40	Depositor EDS
% Data completeness (in resolution range)	95.3 (46.04-2.40) 95.3 (46.04-2.40)	Depositor EDS
R_{merge}	0.03	Depositor
R_{sym}	(Not available)	Depositor
$\langle I/\sigma(I) \rangle$ ¹	2.21 (at 2.39Å)	Xtriage
Refinement program	BUSTER, REFMAC	Depositor
R, R_{free}	0.233 , 0.274 0.252 , 0.254	Depositor DCC
R_{free} test set	2504 reflections (5.10%)	wwPDB-VP
Wilson B-factor (Å ²)	51.1	Xtriage
Anisotropy	0.297	Xtriage
Bulk solvent k_{sol} (e/Å ³), B_{sol} (Å ²)	0.30 , 63.6	EDS
L-test for twinning ²	$\langle L \rangle = 0.48$, $\langle L^2 \rangle = 0.31$	Xtriage
Estimated twinning fraction	No twinning to report.	Xtriage
F_o, F_c correlation	0.93	EDS
Total number of atoms	8181	wwPDB-VP
Average B, all atoms (Å ²)	90.0	wwPDB-VP

Xtriage's analysis on translational NCS is as follows: *The largest off-origin peak in the Patterson function is 4.90% of the height of the origin peak. No significant pseudotranslation is detected.*

¹Intensities estimated from amplitudes.

²Theoretical values of $\langle |L| \rangle$, $\langle L^2 \rangle$ for acentric reflections are 0.5, 0.333 respectively for untwinned datasets, and 0.375, 0.2 for perfectly twinned datasets.

5 Model quality [i](#)

5.1 Standard geometry [i](#)

Bond lengths and bond angles in the following residue types are not validated in this section: UD1, UDP

The Z score for a bond length (or angle) is the number of standard deviations the observed value is removed from the expected value. A bond length (or angle) with $|Z| > 5$ is considered an outlier worth inspection. RMSZ is the root-mean-square of all Z scores of the bond lengths (or angles).

Mol	Chain	Bond lengths		Bond angles	
		RMSZ	$\# Z > 5$	RMSZ	$\# Z > 5$
1	A	0.51	0/4100	0.71	0/5505
1	B	0.49	0/4111	0.72	0/5518
All	All	0.50	0/8211	0.71	0/11023

There are no bond length outliers.

There are no bond angle outliers.

There are no chirality outliers.

There are no planarity outliers.

5.2 Too-close contacts [i](#)

In the following table, the Non-H and H(model) columns list the number of non-hydrogen atoms and hydrogen atoms in the chain respectively. The H(added) column lists the number of hydrogen atoms added and optimized by MolProbity. The Clashes column lists the number of clashes within the asymmetric unit, whereas Symm-Clashes lists symmetry-related clashes.

Mol	Chain	Non-H	H(model)	H(added)	Clashes	Symm-Clashes
1	A	4024	0	4038	30	0
1	B	4034	0	4056	34	0
2	A	25	0	11	0	0
3	B	39	0	25	4	0
4	A	37	0	0	3	0
4	B	22	0	0	1	0
All	All	8181	0	8130	64	0

The all-atom clashscore is defined as the number of clashes found per 1000 atoms (including hydrogen atoms). The all-atom clashscore for this structure is 4.

All (64) close contacts within the same asymmetric unit are listed below, sorted by their clash

magnitude.

Atom-1	Atom-2	Interatomic distance (Å)	Clash overlap (Å)
1:B:88:LEU:CD2	1:B:151:VAL:HG11	2.16	0.74
1:B:250:VAL:HG12	3:B:501:UD1:H8'3	1.67	0.74
1:B:88:LEU:HD23	1:B:151:VAL:HG11	1.69	0.73
1:A:343:VAL:HG12	1:A:350:VAL:HG11	1.70	0.73
1:B:64:THR:HG21	4:B:608:HOH:O	1.90	0.71
1:B:343:VAL:HG12	1:B:350:VAL:HG11	1.71	0.71
1:A:332:ARG:HG3	1:A:401:GLN:HG2	1.79	0.64
1:B:332:ARG:HG3	1:B:401:GLN:HG2	1.80	0.63
1:B:403:GLU:HG3	3:B:501:UD1:O3'	2.01	0.60
1:A:156:THR:HB	1:A:165:TYR:HB3	1.84	0.59
1:B:156:THR:HB	1:B:165:TYR:HB3	1.85	0.58
1:A:296:VAL:HG12	1:A:299:ILE:HD11	1.87	0.57
1:B:11:LEU:HD12	1:B:66:MET:HE3	1.87	0.56
1:B:177:ILE:HG12	1:B:193:VAL:HG12	1.87	0.56
1:B:7:MET:HG2	1:B:41:PHE:HZ	1.72	0.54
1:A:403:GLU:HG3	4:A:637:HOH:O	2.08	0.53
1:A:68:ASN:HB3	1:A:71:GLU:HB2	1.89	0.53
1:A:108:ILE:HG12	1:A:124:ARG:HG3	1.90	0.53
1:A:339:VAL:HG21	1:A:449:MET:HE2	1.90	0.53
1:A:177:ILE:HG12	1:A:193:VAL:HG12	1.91	0.53
1:B:108:ILE:HG12	1:B:124:ARG:HG3	1.90	0.53
1:B:140:ARG:HD2	1:B:161:ASN:OD1	2.10	0.52
1:B:403:GLU:HG3	3:B:501:UD1:HO3'	1.76	0.51
1:B:306:VAL:HG11	1:B:410:ILE:HG21	1.94	0.50
1:B:339:VAL:HG21	1:B:449:MET:HE2	1.93	0.50
1:A:207:CYS:HB2	1:A:233:LYS:HG2	1.93	0.49
1:A:171:GLU:HG3	1:A:172:LYS:HD2	1.95	0.49
1:A:11:LEU:HB2	1:A:66:MET:HE2	1.95	0.49
1:A:323:HIS:HE1	4:A:609:HOH:O	1.96	0.48
1:B:403:GLU:HA	3:B:501:UD1:H8'2	1.94	0.48
1:B:7:MET:HG2	1:B:41:PHE:CZ	2.48	0.48
1:B:247:VAL:HG13	1:B:280:ILE:HG22	1.96	0.48
1:A:11:LEU:HD12	1:A:66:MET:HE3	1.96	0.47
1:B:68:ASN:HB3	1:B:71:GLU:HB2	1.95	0.47
1:A:158:ASN:HD21	1:A:162:LYS:HB2	1.78	0.47
1:A:293:GLN:HG2	4:A:606:HOH:O	2.13	0.47
1:B:78:ASN:OD1	1:B:170:ASP:HB2	2.14	0.47
1:B:155:GLU:HG2	1:B:166:GLN:HG2	1.97	0.47
1:A:88:LEU:HD23	1:A:151:VAL:HG11	1.95	0.47
1:B:437:ASN:HB3	1:B:469:LYS:HB3	1.97	0.47
1:B:158:ASN:HD21	1:B:162:LYS:HB2	1.81	0.45

Continued on next page...

Continued from previous page...

Atom-1	Atom-2	Interatomic distance (Å)	Clash overlap (Å)
1:A:91:HIS:O	1:A:95:ARG:HG2	2.17	0.45
1:B:26:SER:OG	1:B:64:THR:HB	2.16	0.45
1:B:339:VAL:HG11	1:B:449:MET:HE3	1.99	0.45
1:A:437:ASN:HB3	1:A:469:LYS:HB3	1.99	0.45
1:A:155:GLU:HG2	1:A:166:GLN:HG2	2.00	0.44
1:A:322:GLY:HA3	1:A:393:PHE:CD2	2.52	0.44
1:A:247:VAL:HG13	1:A:280:ILE:HG22	2.00	0.44
1:B:322:GLY:HA3	1:B:393:PHE:CD2	2.53	0.44
1:A:327:MET:HE3	1:A:379:LEU:HD22	1.99	0.43
1:A:88:LEU:CD2	1:A:151:VAL:HG11	2.49	0.43
1:B:91:HIS:O	1:B:95:ARG:HG2	2.19	0.43
1:A:409:MET:HE2	1:A:419:VAL:HG11	2.01	0.42
1:A:47:TYR:CE1	1:A:66:MET:HE1	2.55	0.42
1:B:332:ARG:CG	1:B:401:GLN:HG2	2.47	0.42
1:A:339:VAL:HG11	1:A:449:MET:HE3	2.02	0.42
1:B:47:TYR:CE1	1:B:66:MET:HE1	2.55	0.42
1:B:11:LEU:HB2	1:B:66:MET:HE2	2.02	0.41
1:A:69:VAL:O	1:A:73:PHE:HD2	2.03	0.41
1:B:409:MET:HE2	1:B:419:VAL:HG11	2.02	0.41
1:A:409:MET:HE3	1:A:421:ALA:CB	2.50	0.40
1:B:409:MET:HE3	1:B:421:ALA:CB	2.52	0.40
1:A:441:ILE:HG21	1:A:449:MET:HB2	2.04	0.40
1:B:116:THR:O	1:B:117:ARG:CB	2.69	0.40

There are no symmetry-related clashes.

5.3 Torsion angles [i](#)

5.3.1 Protein backbone [i](#)

In the following table, the Percentiles column shows the percent Ramachandran outliers of the chain as a percentile score with respect to all X-ray entries followed by that with respect to entries of similar resolution.

The Analysed column shows the number of residues for which the backbone conformation was analysed, and the total number of residues.

Mol	Chain	Analysed	Favoured	Allowed	Outliers	Percentiles
1	A	491/493 (100%)	465 (95%)	25 (5%)	1 (0%)	47 62
1	B	491/493 (100%)	470 (96%)	18 (4%)	3 (1%)	25 36

Continued on next page...

Continued from previous page...

Mol	Chain	Analysed	Favoured	Allowed	Outliers	Percentiles
All	All	982/986 (100%)	935 (95%)	43 (4%)	4 (0%)	34 48

All (4) Ramachandran outliers are listed below:

Mol	Chain	Res	Type
1	B	407	LEU
1	A	127	LYS
1	B	127	LYS
1	B	359	SER

5.3.2 Protein sidechains ⓘ

In the following table, the Percentiles column shows the percent sidechain outliers of the chain as a percentile score with respect to all X-ray entries followed by that with respect to entries of similar resolution.

The Analysed column shows the number of residues for which the sidechain conformation was analysed, and the total number of residues.

Mol	Chain	Analysed	Rotameric	Outliers	Percentiles
1	A	447/450 (99%)	420 (94%)	27 (6%)	19 31
1	B	449/450 (100%)	426 (95%)	23 (5%)	24 39
All	All	896/900 (100%)	846 (94%)	50 (6%)	21 34

All (50) residues with a non-rotameric sidechain are listed below:

Mol	Chain	Res	Type
1	A	7	MET
1	A	27	LYS
1	A	47	TYR
1	A	77	SER
1	A	100	ILE
1	A	114	ILE
1	A	131	VAL
1	A	138	ASN
1	A	139	LYS
1	A	171	GLU
1	A	172	LYS
1	A	182	ASN
1	A	198	LYS
1	A	240	LYS

Continued on next page...

Continued from previous page...

Mol	Chain	Res	Type
1	A	296	VAL
1	A	327	MET
1	A	345	LYS
1	A	353	HIS
1	A	374	GLU
1	A	430	ASP
1	A	435	ASN
1	A	440	LEU
1	A	457	VAL
1	A	459	ASN
1	A	462	LEU
1	A	469	LYS
1	A	488	LEU
1	B	7	MET
1	B	27	LYS
1	B	47	TYR
1	B	82	PHE
1	B	100	ILE
1	B	106	LYS
1	B	131	VAL
1	B	138	ASN
1	B	139	LYS
1	B	195	VAL
1	B	296	VAL
1	B	297	GLU
1	B	345	LYS
1	B	353	HIS
1	B	363	LYS
1	B	374	GLU
1	B	430	ASP
1	B	435	ASN
1	B	440	LEU
1	B	457	VAL
1	B	459	ASN
1	B	462	LEU
1	B	469	LYS

Sometimes sidechains can be flipped to improve hydrogen bonding and reduce clashes. All (7) such sidechains are listed below:

Mol	Chain	Res	Type
1	A	24	ASN
1	A	196	ASN

Continued on next page...

Continued from previous page...

Mol	Chain	Res	Type
1	A	323	HIS
1	A	459	ASN
1	B	182	ASN
1	B	241	ASN
1	B	459	ASN

5.3.3 RNA [i](#)

There are no RNA molecules in this entry.

5.4 Non-standard residues in protein, DNA, RNA chains [i](#)

There are no non-standard protein/DNA/RNA residues in this entry.

5.5 Carbohydrates [i](#)

There are no monosaccharides in this entry.

5.6 Ligand geometry [i](#)

2 ligands are modelled in this entry.

In the following table, the Counts columns list the number of bonds (or angles) for which Mogul statistics could be retrieved, the number of bonds (or angles) that are observed in the model and the number of bonds (or angles) that are defined in the Chemical Component Dictionary. The Link column lists molecule types, if any, to which the group is linked. The Z score for a bond length (or angle) is the number of standard deviations the observed value is removed from the expected value. A bond length (or angle) with $|Z| > 2$ is considered an outlier worth inspection. RMSZ is the root-mean-square of all Z scores of the bond lengths (or angles).

Mol	Type	Chain	Res	Link	Bond lengths			Bond angles		
					Counts	RMSZ	$\# Z > 2$	Counts	RMSZ	$\# Z > 2$
3	UD1	B	501	-	38,41,41	1.42	7 (18%)	57,62,62	1.54	10 (17%)
2	UDP	A	500	-	24,26,26	0.55	0	37,40,40	0.71	0

In the following table, the Chirals column lists the number of chiral outliers, the number of chiral centers analysed, the number of these observed in the model and the number defined in the Chemical Component Dictionary. Similar counts are reported in the Torsion and Rings columns. '-' means no outliers of that kind were identified.

Mol	Type	Chain	Res	Link	Chirals	Torsions	Rings
3	UD1	B	501	-	-	11/26/63/63	0/3/3/3
2	UDP	A	500	-	-	4/16/32/32	0/2/2/2

All (7) bond length outliers are listed below:

Mol	Chain	Res	Type	Atoms	Z	Observed(Å)	Ideal(Å)
3	B	501	UD1	C3'-C2'	3.10	1.59	1.53
3	B	501	UD1	O5'-C1'	2.69	1.48	1.41
3	B	501	UD1	C1'-C2'	2.49	1.57	1.53
3	B	501	UD1	C6-N1	2.36	1.43	1.38
3	B	501	UD1	C6-C5	2.20	1.40	1.35
3	B	501	UD1	C2'-N2'	2.06	1.49	1.45
3	B	501	UD1	PB-O1'	2.03	1.65	1.60

All (10) bond angle outliers are listed below:

Mol	Chain	Res	Type	Atoms	Z	Observed(°)	Ideal(°)
3	B	501	UD1	C4-N3-C2	-4.57	120.55	126.58
3	B	501	UD1	N3-C2-N1	3.72	119.82	114.89
3	B	501	UD1	C5-C4-N3	3.55	120.15	114.84
3	B	501	UD1	O4B-C4B-C5B	-3.35	98.36	109.37
3	B	501	UD1	O5'-C1'-O1'	-2.82	107.69	111.36
3	B	501	UD1	O4-C4-C5	-2.76	120.30	125.16
3	B	501	UD1	PB-O1'-C1'	2.55	129.61	119.74
3	B	501	UD1	O1'-C1'-C2'	2.50	112.93	108.40
3	B	501	UD1	C2'-N2'-C7'	2.12	128.34	123.18
3	B	501	UD1	C1'-O5'-C5'	2.06	117.74	113.69

There are no chirality outliers.

All (15) torsion outliers are listed below:

Mol	Chain	Res	Type	Atoms
2	A	500	UDP	C5'-O5'-PA-O1A
3	B	501	UD1	O5'-C1'-O1'-PB
3	B	501	UD1	O5'-C5'-C6'-O6'
3	B	501	UD1	C4'-C5'-C6'-O6'
3	B	501	UD1	C1'-O1'-PB-O3A
3	B	501	UD1	C8'-C7'-N2'-C2'
3	B	501	UD1	O7'-C7'-N2'-C2'
3	B	501	UD1	C1'-O1'-PB-O2B
2	A	500	UDP	PB-O3A-PA-O5'
3	B	501	UD1	PA-O3A-PB-O1'

Continued on next page...

Continued from previous page...

Mol	Chain	Res	Type	Atoms
2	A	500	UDP	C5'-O5'-PA-O3A
3	B	501	UD1	C5B-O5B-PA-O3A
3	B	501	UD1	O4B-C4B-C5B-O5B
2	A	500	UDP	O4'-C4'-C5'-O5'
3	B	501	UD1	PA-O3A-PB-O1B

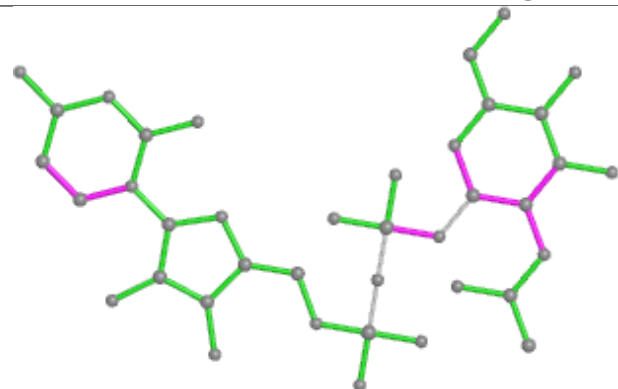
There are no ring outliers.

1 monomer is involved in 4 short contacts:

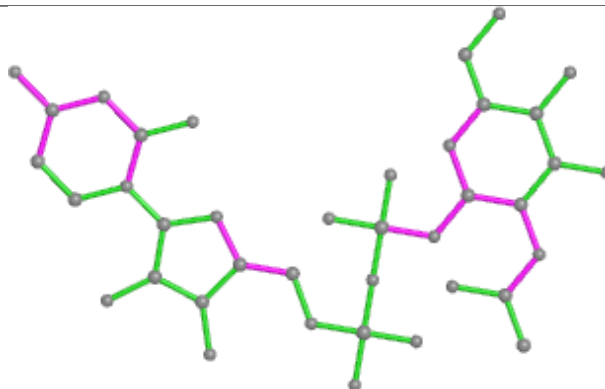
Mol	Chain	Res	Type	Clashes	Symm-Clashes
3	B	501	UD1	4	0

The following is a two-dimensional graphical depiction of Mogul quality analysis of bond lengths, bond angles, torsion angles, and ring geometry for all instances of the Ligand of Interest. In addition, ligands with molecular weight > 250 and outliers as shown on the validation Tables will also be included. For torsion angles, if less than 5% of the Mogul distribution of torsion angles is within 10 degrees of the torsion angle in question, then that torsion angle is considered an outlier. Any bond that is central to one or more torsion angles identified as an outlier by Mogul will be highlighted in the graph. For rings, the root-mean-square deviation (RMSD) between the ring in question and similar rings identified by Mogul is calculated over all ring torsion angles. If the average RMSD is greater than 60 degrees and the minimal RMSD between the ring in question and any Mogul-identified rings is also greater than 60 degrees, then that ring is considered an outlier. The outliers are highlighted in purple. The color gray indicates Mogul did not find sufficient equivalents in the CSD to analyse the geometry.

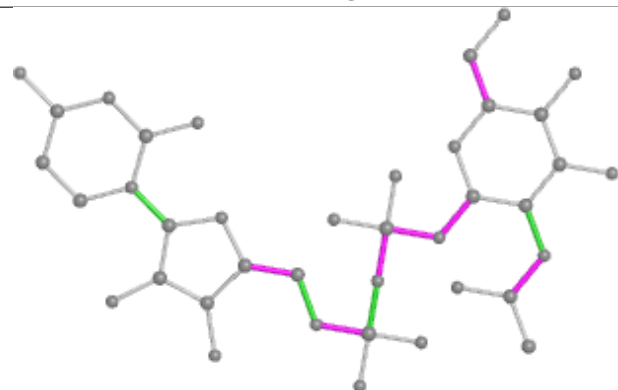
Ligand UD1 B 501



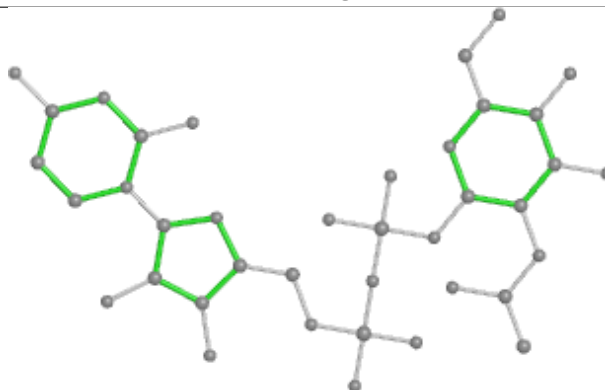
Bond lengths



Bond angles

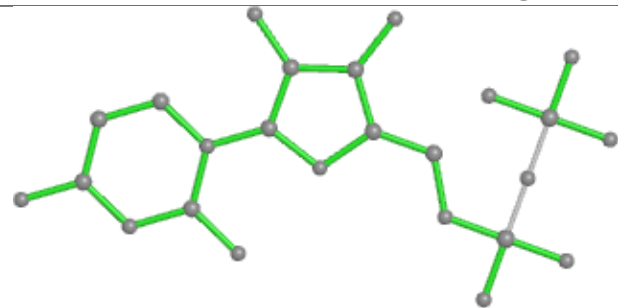


Torsions

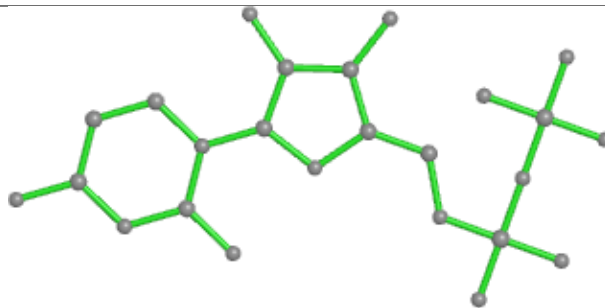


Rings

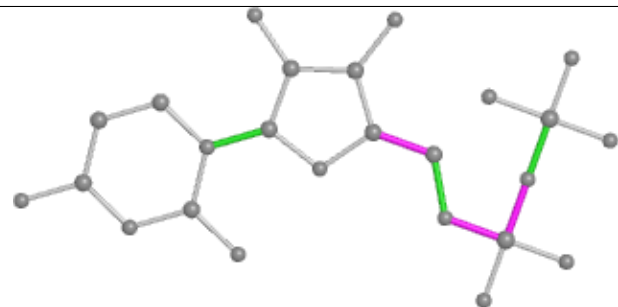
Ligand UDP A 500



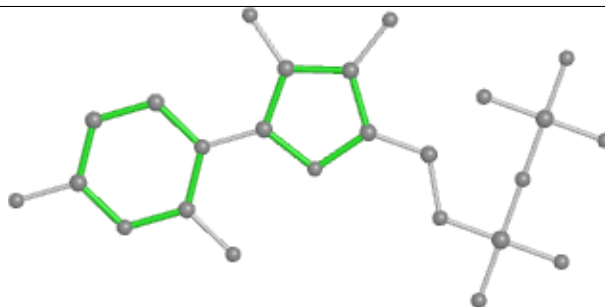
Bond lengths



Bond angles



Torsions



Rings

5.7 Other polymers [i](#)

There are no such residues in this entry.

5.8 Polymer linkage issues [i](#)

There are no chain breaks in this entry.

6 Fit of model and data

6.1 Protein, DNA and RNA chains

In the following table, the column labelled ‘#RSRZ > 2’ contains the number (and percentage) of RSRZ outliers, followed by percent RSRZ outliers for the chain as percentile scores relative to all X-ray entries and entries of similar resolution. The OWAB column contains the minimum, median, 95th percentile and maximum values of the occupancy-weighted average B-factor per residue. The column labelled ‘Q < 0.9’ lists the number of (and percentage) of residues with an average occupancy less than 0.9.

Mol	Chain	Analysed	<RSRZ>	#RSRZ>2	OWAB(Å ²)	Q<0.9
1	A	493/493 (100%)	0.22	20 (4%) 37 36	33, 78, 131, 154	0
1	B	493/493 (100%)	0.89	93 (18%) 1 1	34, 94, 161, 193	0
All	All	986/986 (100%)	0.55	113 (11%) 4 4	33, 85, 147, 193	0

All (113) RSRZ outliers are listed below:

Mol	Chain	Res	Type	RSRZ
1	B	368	ILE	10.6
1	B	444	HIS	8.0
1	B	370	ASP	7.2
1	B	262	PHE	7.2
1	B	378	PHE	7.0
1	B	345	LYS	6.8
1	B	343	VAL	6.8
1	B	443	ASN	6.2
1	B	270	ILE	6.2
1	B	366	LYS	5.9
1	B	114	ILE	5.7
1	B	319	LYS	5.6
1	B	447	ASN	5.2
1	B	354	ILE	5.1
1	B	376	ASN	4.9
1	B	340	ALA	4.9
1	B	336	LEU	4.9
1	B	338	GLU	4.8
1	B	439	TYR	4.6
1	B	329	PRO	4.5
1	A	82	PHE	4.5
1	B	320	ILE	4.4
1	B	276	ILE	4.3
1	B	400	SER	4.3

Continued on next page...

Continued from previous page...

Mol	Chain	Res	Type	RSRZ
1	B	347	ASP	4.2
1	B	397	VAL	4.2
1	B	442	GLU	4.2
1	B	331	LYS	4.0
1	B	369	GLU	4.0
1	B	333	ILE	3.9
1	A	99	THR	3.8
1	B	263	LYS	3.7
1	B	454	LEU	3.7
1	B	420	VAL	3.7
1	B	377	VAL	3.6
1	A	115	THR	3.6
1	B	401	GLN	3.6
1	B	292	ASN	3.4
1	B	321	VAL	3.4
1	B	115	THR	3.4
1	B	159	VAL	3.4
1	A	96	LEU	3.3
1	B	330	THR	3.3
1	A	117	ARG	3.3
1	B	453	ILE	3.3
1	B	379	LEU	3.2
1	B	1	MET	3.2
1	B	372	ASN	3.2
1	B	426	TYR	3.1
1	B	246	GLY	3.1
1	B	294	PHE	3.0
1	B	394	LYS	3.0
1	B	290	ILE	3.0
1	B	256	PHE	3.0
1	B	251	ASN	3.0
1	B	298	ASN	3.0
1	B	422	PHE	2.9
1	B	261	ALA	2.9
1	B	268	TYR	2.9
1	B	350	VAL	2.8
1	B	337	ILE	2.8
1	B	352	PHE	2.8
1	A	114	ILE	2.8
1	A	184	ASN	2.7
1	B	257	ASP	2.7
1	B	346	LYS	2.7

Continued on next page...

Continued from previous page...

Mol	Chain	Res	Type	RSRZ
1	B	288	LEU	2.7
1	B	380	LYS	2.7
1	B	306	VAL	2.6
1	B	446	ILE	2.6
1	B	97	LYS	2.6
1	B	252	HIS	2.6
1	B	96	LEU	2.6
1	A	98	ASN	2.6
1	A	163	VAL	2.6
1	B	274	ASN	2.6
1	B	275	LYS	2.5
1	B	117	ARG	2.5
1	A	242	ALA	2.5
1	B	219	LYS	2.5
1	B	353	HIS	2.5
1	B	300	PHE	2.5
1	B	399	THR	2.5
1	B	424	ILE	2.5
1	B	456	LEU	2.4
1	B	118	THR	2.4
1	B	242	ALA	2.4
1	A	209	TYR	2.4
1	B	328	VAL	2.4
1	B	102	ILE	2.4
1	B	235	PHE	2.4
1	A	35	PRO	2.4
1	B	259	THR	2.3
1	B	98	ASN	2.3
1	B	450	ALA	2.3
1	B	100	ILE	2.3
1	B	441	ILE	2.3
1	A	196	ASN	2.3
1	A	34	ILE	2.2
1	A	57	GLN	2.2
1	B	349	ALA	2.2
1	A	1	MET	2.2
1	A	162	LYS	2.2
1	B	478	TYR	2.1
1	A	107	GLY	2.1
1	B	419	VAL	2.1
1	B	421	ALA	2.1
1	A	108	ILE	2.1

Continued on next page...

Continued from previous page...

Mol	Chain	Res	Type	RSRZ
1	B	458	ASN	2.1
1	B	363	LYS	2.1
1	A	193	VAL	2.1
1	B	396	VAL	2.1
1	B	301	THR	2.0

6.2 Non-standard residues in protein, DNA, RNA chains [i](#)

There are no non-standard protein/DNA/RNA residues in this entry.

6.3 Carbohydrates [i](#)

There are no monosaccharides in this entry.

6.4 Ligands [i](#)

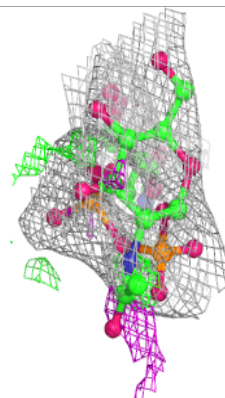
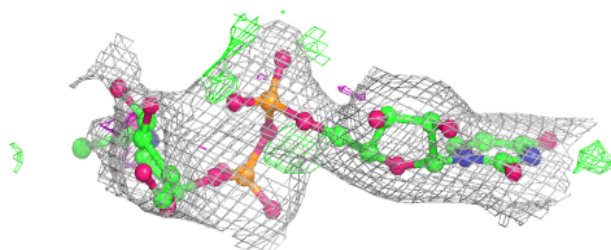
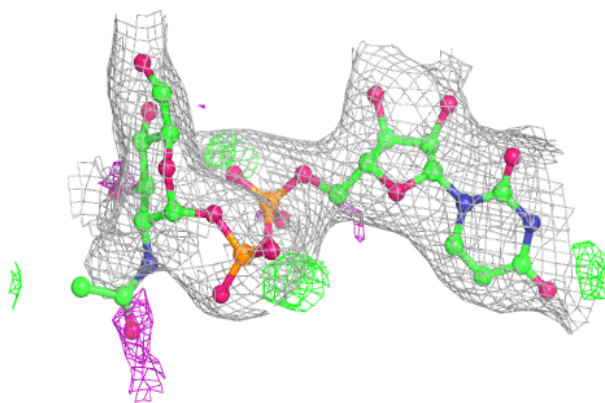
In the following table, the Atoms column lists the number of modelled atoms in the group and the number defined in the chemical component dictionary. The B-factors column lists the minimum, median, 95th percentile and maximum values of B factors of atoms in the group. The column labelled 'Q< 0.9' lists the number of atoms with occupancy less than 0.9.

Mol	Type	Chain	Res	Atoms	RSCC	RSR	B-factors(\AA^2)	Q<0.9
3	UD1	B	501	39/39	0.93	0.17	61,70,91,94	0
2	UDP	A	500	25/25	0.96	0.12	52,62,71,73	0

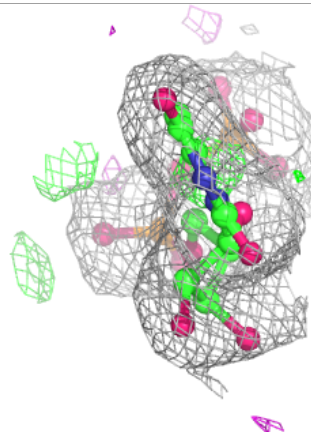
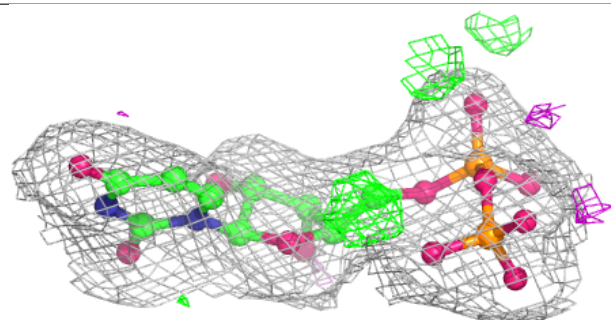
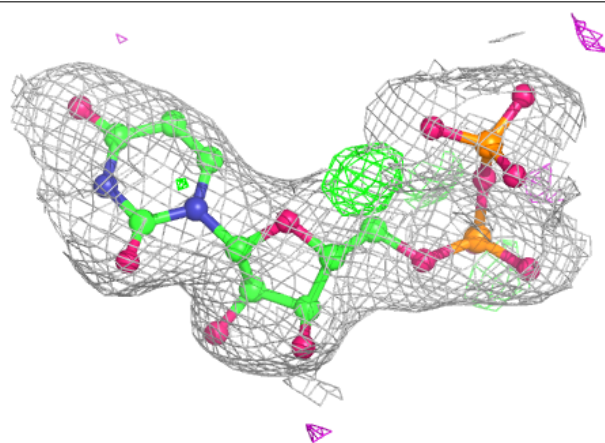
The following is a graphical depiction of the model fit to experimental electron density of all instances of the Ligand of Interest. In addition, ligands with molecular weight > 250 and outliers as shown on the geometry validation Tables will also be included. Each fit is shown from different orientation to approximate a three-dimensional view.

Electron density around UD1 B 501:

$2mF_o-DF_c$ (at 0.7 rmsd) in gray
 mF_o-DF_c (at 3 rmsd) in purple (negative)
and green (positive)

**Electron density around UDP A 500:**

$2mF_o-DF_c$ (at 0.7 rmsd) in gray
 mF_o-DF_c (at 3 rmsd) in purple (negative)
and green (positive)



6.5 Other polymers [i](#)

There are no such residues in this entry.