



wwPDB X-ray Structure Validation Summary Report ⓘ

Mar 22, 2025 – 02:18 PM EDT

PDB ID : 4Y0H
Title : Gamma-aminobutyric acid aminotransferase inactivated by (1S,3S)-3-amino-4-difluoromethylenyl-1-cyclopentanoic acid (CPP-115)
Authors : Rui, W.; Ruslan, S.; Hyunbeom, L.; Emma, H.D.; Jose, I.J.; Neil, K.; Richard, B.S.; Dali, L.
Deposited on : 2015-02-06
Resolution : 1.63 Å(reported)

This is a wwPDB X-ray Structure Validation Summary Report for a publicly released PDB entry.

We welcome your comments at validation@mail.wwpdb.org

A user guide is available at

<https://www.wwpdb.org/validation/2017/XrayValidationReportHelp>

with specific help available everywhere you see the ⓘ symbol.

The types of validation reports are described at

<http://www.wwpdb.org/validation/2017/FAQs#types>.

The following versions of software and data (see [references ⓘ](#)) were used in the production of this report:

MolProbity	:	4.02b-467
Mogul	:	2022.3.0, CSD as543be (2022)
Xtriage (Phenix)	:	1.21
EDS	:	3.0
Percentile statistics	:	20231227.v01 (using entries in the PDB archive December 27th 2023)
CCP4	:	9.0.004 (Gargrove)
Density-Fitness	:	1.0.11
Ideal geometry (proteins)	:	Engh & Huber (2001)
Ideal geometry (DNA, RNA)	:	Parkinson et al. (1996)
Validation Pipeline (wwPDB-VP)	:	2.41.4

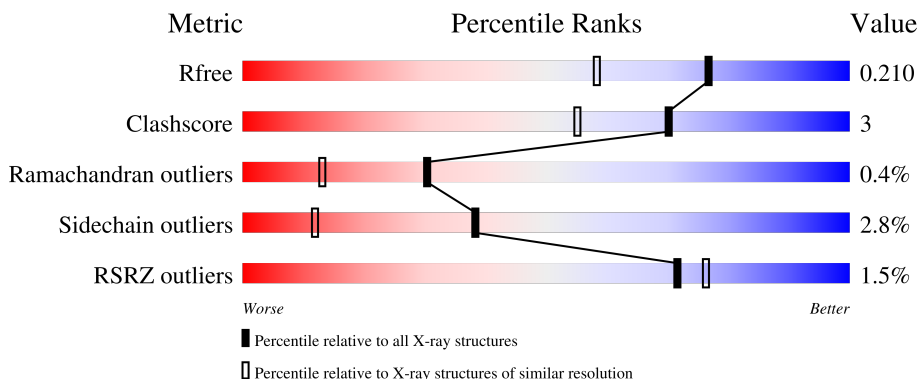
1 Overall quality at a glance ⓘ

The following experimental techniques were used to determine the structure:

X-RAY DIFFRACTION

The reported resolution of this entry is 1.63 Å.

Percentile scores (ranging between 0-100) for global validation metrics of the entry are shown in the following graphic. The table shows the number of entries on which the scores are based.



Metric	Whole archive (#Entries)	Similar resolution (#Entries, resolution range(Å))
R_{free}	164625	1015 (1.64-1.64)
Clashscore	180529	1093 (1.64-1.64)
Ramachandran outliers	177936	1077 (1.64-1.64)
Sidechain outliers	177891	1077 (1.64-1.64)
RSRZ outliers	164620	1015 (1.64-1.64)

The table below summarises the geometric issues observed across the polymeric chains and their fit to the electron density. The red, orange, yellow and green segments of the lower bar indicate the fraction of residues that contain outliers for ≥ 3 , 2, 1 and 0 types of geometric quality criteria respectively. A grey segment represents the fraction of residues that are not modelled. The numeric value for each fraction is indicated below the corresponding segment, with a dot representing fractions $\leq 5\%$. The upper red bar (where present) indicates the fraction of residues that have poor fit to the electron density. The numeric value is given above the bar.

Mol	Chain	Length	Quality of chain
1	A	463	<div> <div>2%</div> <div>88%</div> <div>10%</div> </div>
1	B	463	<div> <div>%</div> <div>90%</div> <div>8%</div> </div>
1	C	463	<div> <div>%</div> <div>90%</div> <div>10%</div> </div>
1	D	463	<div> <div>2%</div> <div>92%</div> <div>8%</div> </div>

2 Entry composition

There are 5 unique types of molecules in this entry. The entry contains 15894 atoms, of which 0 are hydrogens and 0 are deuteriums.

In the tables below, the ZeroOcc column contains the number of atoms modelled with zero occupancy, the AltConf column contains the number of residues with at least one atom in alternate conformation and the Trace column contains the number of residues modelled with at most 2 atoms.

- Molecule 1 is a protein called 4-aminobutyrate aminotransferase, mitochondrial.

Mol	Chain	Residues	Atoms					ZeroOcc	AltConf	Trace
1	A	461	Total	C	N	O	S	0	14	0
			3739	2387	646	681	25			
1	B	462	Total	C	N	O	S	0	12	0
			3742	2382	649	686	25			
1	C	462	Total	C	N	O	S	0	10	0
			3724	2375	644	680	25			
1	D	463	Total	C	N	O	S	0	16	0
			3768	2407	648	687	26			

There are 8 discrepancies between the modelled and reference sequences:

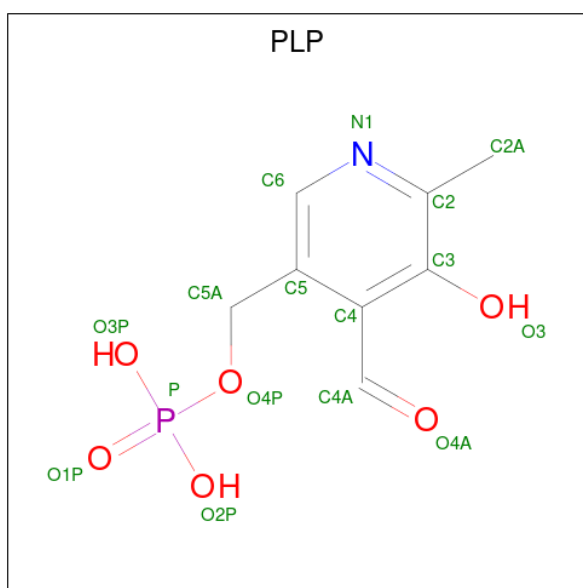
Chain	Residue	Modelled	Actual	Comment	Reference
A	10	GLY	-	expression tag	UNP P80147
A	158	GLU	GLN	conflict	UNP P80147
B	10	GLY	-	expression tag	UNP P80147
B	158	GLU	GLN	conflict	UNP P80147
C	10	GLY	-	expression tag	UNP P80147
C	158	GLU	GLN	conflict	UNP P80147
D	10	GLY	-	expression tag	UNP P80147
D	158	GLU	GLN	conflict	UNP P80147

- Molecule 2 is FE2/S2 (INORGANIC) CLUSTER (three-letter code: FES) (formula: Fe₂S₂).



Mol	Chain	Residues	Atoms			ZeroOcc	AltConf
2	A	1	Total	Fe	S	0	0
			4	2	2		
2	C	1	Total	Fe	S	0	0
			4	2	2		

- Molecule 3 is PYRIDOXAL-5'-PHOSPHATE (three-letter code: PLP) (formula: $C_8H_{10}NO_6P$).



Mol	Chain	Residues	Atoms					ZeroOcc	AltConf
3	A	1	Total	C	N	O	P	0	0
			15	8	1	5	1		
3	B	1	Total	C	N	O	P	0	0
			15	8	1	5	1		

Continued on next page...

Continued from previous page...

Mol	Chain	Residues	Atoms					ZeroOcc	AltConf
3	C	1	Total	C	N	O	P	0	0
			15	8	1	5	1		
3	D	1	Total	C	N	O	P	0	0
			15	8	1	5	1		

- Molecule 4 is GLYCEROL (three-letter code: GOL) (formula: $C_3H_8O_3$).



Mol	Chain	Residues	Atoms			ZeroOcc	AltConf
4	B	1	Total	C	O	0	0
			6	3	3		
4	C	1	Total	C	O	0	0
			6	3	3		

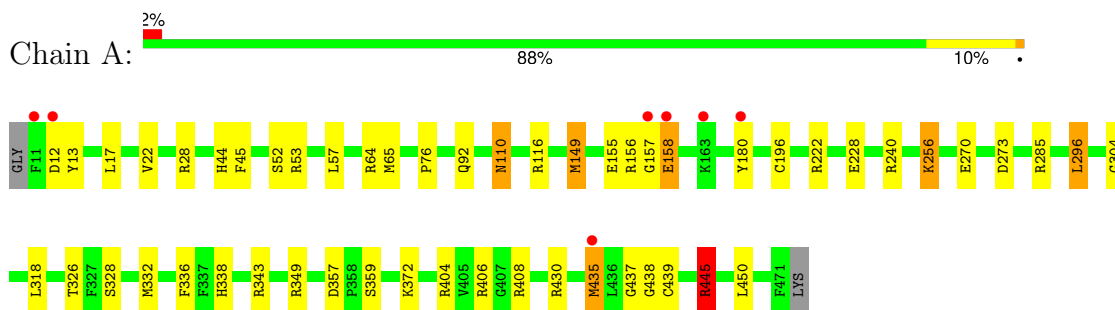
- Molecule 5 is water.

Mol	Chain	Residues	Atoms		ZeroOcc	AltConf
5	A	213	Total	O	0	0
			213	213		
5	B	159	Total	O	0	0
			159	159		
5	C	199	Total	O	0	0
			199	199		
5	D	270	Total	O	0	0
			270	270		

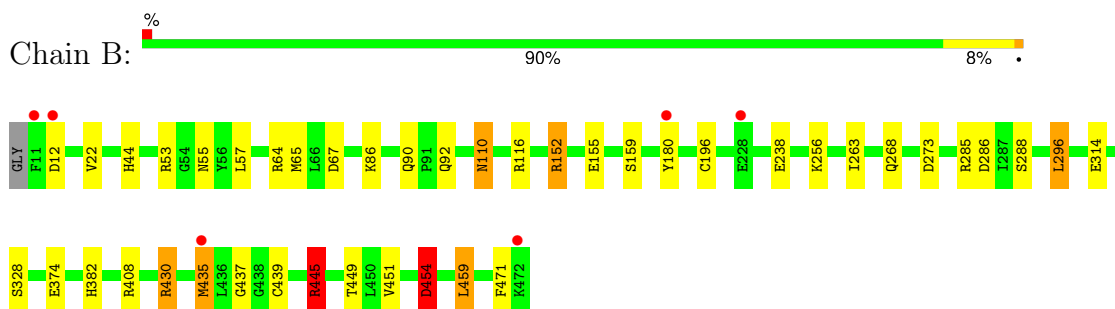
3 Residue-property plots [i](#)

These plots are drawn for all protein, RNA, DNA and oligosaccharide chains in the entry. The first graphic for a chain summarises the proportions of the various outlier classes displayed in the second graphic. The second graphic shows the sequence view annotated by issues in geometry and electron density. Residues are color-coded according to the number of geometric quality criteria for which they contain at least one outlier: green = 0, yellow = 1, orange = 2 and red = 3 or more. A red dot above a residue indicates a poor fit to the electron density ($RSRZ > 2$). Stretches of 2 or more consecutive residues without any outlier are shown as a green connector. Residues present in the sample, but not in the model, are shown in grey.

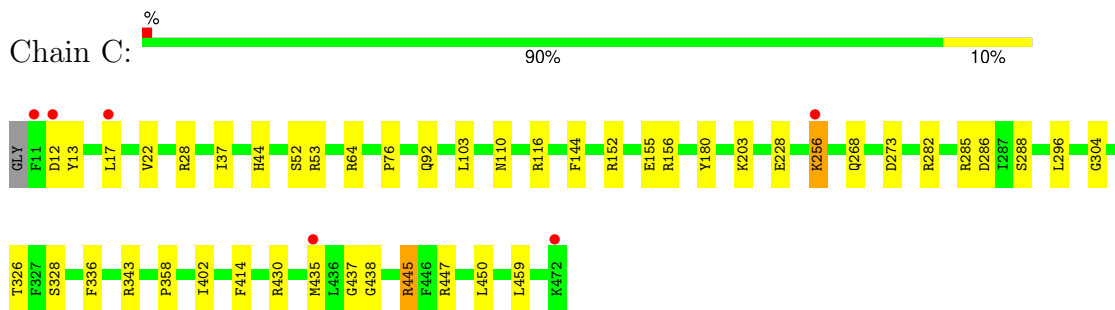
- Molecule 1: 4-aminobutyrate aminotransferase, mitochondrial



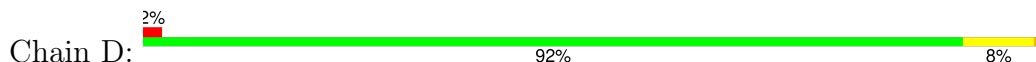
- Molecule 1: 4-aminobutyrate aminotransferase, mitochondrial

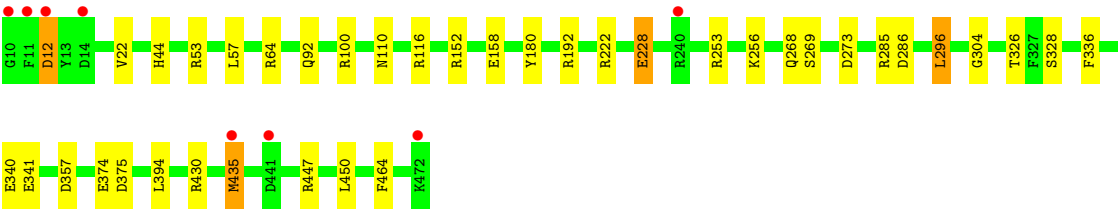


- Molecule 1: 4-aminobutyrate aminotransferase, mitochondrial



- Molecule 1: 4-aminobutyrate aminotransferase, mitochondrial





4 Data and refinement statistics

Property	Value	Source
Space group	P 1 21 1	Depositor
Cell constants a, b, c, α , β , γ	69.50Å 226.92Å 71.44Å 90.00° 108.67° 90.00°	Depositor
Resolution (Å)	53.96 – 1.63 53.96 – 1.63	Depositor EDS
% Data completeness (in resolution range)	96.8 (53.96-1.63) 96.9 (53.96-1.63)	Depositor EDS
R_{merge}	(Not available)	Depositor
R_{sym}	(Not available)	Depositor
$\langle I/\sigma(I) \rangle$ ¹	2.67 (at 1.63Å)	Xtriage
Refinement program	REFMAC 5.8.0073, PHENIX	Depositor
R, R_{free}	0.176 , 0.203 0.186 , 0.210	Depositor DCC
R_{free} test set	12646 reflections (5.03%)	wwPDB-VP
Wilson B-factor (Å ²)	16.2	Xtriage
Anisotropy	0.018	Xtriage
Bulk solvent k_{sol} (e/Å ³), B_{sol} (Å ²)	0.37 , 31.5	EDS
L-test for twinning ²	$\langle L \rangle = 0.49$, $\langle L^2 \rangle = 0.33$	Xtriage
Estimated twinning fraction	0.017 for l,-k,h	Xtriage
F_o, F_c correlation	0.96	EDS
Total number of atoms	15894	wwPDB-VP
Average B, all atoms (Å ²)	19.0	wwPDB-VP

Xtriage's analysis on translational NCS is as follows: *The largest off-origin peak in the Patterson function is 3.12% of the height of the origin peak. No significant pseudotranslation is detected.*

¹Intensities estimated from amplitudes.

²Theoretical values of $\langle |L| \rangle$, $\langle L^2 \rangle$ for acentric reflections are 0.5, 0.333 respectively for untwinned datasets, and 0.375, 0.2 for perfectly twinned datasets.

5 Model quality [i](#)

5.1 Standard geometry [i](#)

Bond lengths and bond angles in the following residue types are not validated in this section: FES, GOL, PLP

The Z score for a bond length (or angle) is the number of standard deviations the observed value is removed from the expected value. A bond length (or angle) with $|Z| > 5$ is considered an outlier worth inspection. RMSZ is the root-mean-square of all Z scores of the bond lengths (or angles).

Mol	Chain	Bond lengths		Bond angles	
		RMSZ	# Z >5	RMSZ	# Z >5
1	A	1.01	2/3858 (0.1%)	1.11	23/5205 (0.4%)
1	B	1.02	3/3837 (0.1%)	1.11	17/5183 (0.3%)
1	C	1.05	0/3819	1.12	19/5158 (0.4%)
1	D	1.08	2/3878 (0.1%)	1.08	15/5234 (0.3%)
All	All	1.04	7/15392 (0.0%)	1.10	74/20780 (0.4%)

Chiral center outliers are detected by calculating the chiral volume of a chiral center and verifying if the center is modelled as a planar moiety or with the opposite hand. A planarity outlier is detected by checking planarity of atoms in a peptide group, atoms in a mainchain group or atoms of a sidechain that are expected to be planar.

Mol	Chain	#Chirality outliers	#Planarity outliers
1	B	0	1

The worst 5 of 7 bond length outliers are listed below:

Mol	Chain	Res	Type	Atoms	Z	Observed(Å)	Ideal(Å)
1	D	374	GLU	CD-OE1	-6.25	1.18	1.25
1	A	359	SER	CB-OG	-5.72	1.34	1.42
1	B	12	ASP	CB-CG	5.67	1.63	1.51
1	D	341	GLU	CD-OE1	5.41	1.31	1.25
1	A	196	CYS	CB-SG	-5.22	1.73	1.81

The worst 5 of 74 bond angle outliers are listed below:

Mol	Chain	Res	Type	Atoms	Z	Observed(°)	Ideal(°)
1	C	445	ARG	NE-CZ-NH2	18.38	129.49	120.30
1	A	445	ARG	NE-CZ-NH2	17.79	129.19	120.30
1	A	445	ARG	NE-CZ-NH1	-16.70	111.95	120.30
1	B	445	ARG	NE-CZ-NH2	14.61	127.60	120.30

Continued on next page...

Continued from previous page...

Mol	Chain	Res	Type	Atoms	Z	Observed(°)	Ideal(°)
1	B	445	ARG	NE-CZ-NH1	-13.85	113.38	120.30

There are no chirality outliers.

All (1) planarity outliers are listed below:

Mol	Chain	Res	Type	Group
1	B	471	PHE	Peptide

5.2 Too-close contacts [i](#)

In the following table, the Non-H and H(model) columns list the number of non-hydrogen atoms and hydrogen atoms in the chain respectively. The H(added) column lists the number of hydrogen atoms added and optimized by MolProbity. The Clashes column lists the number of clashes within the asymmetric unit, whereas Symm-Clashes lists symmetry-related clashes.

Mol	Chain	Non-H	H(model)	H(added)	Clashes	Symm-Clashes
1	A	3739	0	3713	31	0
1	B	3742	0	3655	29	0
1	C	3724	0	3654	22	0
1	D	3768	0	3695	17	0
2	A	4	0	0	0	0
2	C	4	0	0	0	0
3	A	15	0	6	0	0
3	B	15	0	6	0	0
3	C	15	0	6	0	0
3	D	15	0	6	0	0
4	B	6	0	7	3	0
4	C	6	0	8	0	0
5	A	213	0	0	4	0
5	B	159	0	0	1	0
5	C	199	0	0	3	0
5	D	270	0	0	3	0
All	All	15894	0	14756	99	0

The all-atom clashscore is defined as the number of clashes found per 1000 atoms (including hydrogen atoms). The all-atom clashscore for this structure is 3.

The worst 5 of 99 close contacts within the same asymmetric unit are listed below, sorted by their clash magnitude.

Atom-1	Atom-2	Interatomic distance (Å)	Clash overlap (Å)
1:A:53[B]:ARG:HG3	1:A:53[B]:ARG:HH11	1.12	1.05
1:D:53[B]:ARG:HG2	1:D:53[B]:ARG:HH11	1.12	1.03
1:D:228:GLU:HG3	5:D:696:HOH:O	1.59	1.01
1:B:65:MET:HB2	1:B:435[B]:MET:HE2	1.47	0.96
1:A:155:GLU:OE1	1:A:180:TYR:OH	1.87	0.91

There are no symmetry-related clashes.

5.3 Torsion angles [i](#)

5.3.1 Protein backbone [i](#)

In the following table, the Percentiles column shows the percent Ramachandran outliers of the chain as a percentile score with respect to all X-ray entries followed by that with respect to entries of similar resolution.

The Analysed column shows the number of residues for which the backbone conformation was analysed, and the total number of residues.

Mol	Chain	Analysed	Favoured	Allowed	Outliers	Percentiles	
1	A	473/463 (102%)	453 (96%)	17 (4%)	3 (1%)	22	7
1	B	472/463 (102%)	455 (96%)	16 (3%)	1 (0%)	44	26
1	C	470/463 (102%)	454 (97%)	14 (3%)	2 (0%)	30	13
1	D	477/463 (103%)	461 (97%)	15 (3%)	1 (0%)	44	26
All	All	1892/1852 (102%)	1823 (96%)	62 (3%)	7 (0%)	30	13

5 of 7 Ramachandran outliers are listed below:

Mol	Chain	Res	Type
1	A	158	GLU
1	A	328	SER
1	B	328	SER
1	D	328	SER
1	C	328	SER

5.3.2 Protein sidechains [i](#)

In the following table, the Percentiles column shows the percent sidechain outliers of the chain as a percentile score with respect to all X-ray entries followed by that with respect to entries of similar resolution.

The Analysed column shows the number of residues for which the sidechain conformation was analysed, and the total number of residues.

Mol	Chain	Analysed	Rotameric	Outliers	Percentiles	
1	A	410/401 (102%)	398 (97%)	12 (3%)	37	11
1	B	403/401 (100%)	388 (96%)	15 (4%)	29	5
1	C	402/401 (100%)	390 (97%)	12 (3%)	36	10
1	D	406/401 (101%)	395 (97%)	11 (3%)	40	12
All	All	1621/1604 (101%)	1571 (97%)	50 (3%)	38	9

5 of 50 residues with a non-rotameric sidechain are listed below:

Mol	Chain	Res	Type
1	C	92	GLN
1	C	288	SER
1	D	435[B]	MET
1	C	110	ASN
1	C	228[B]	GLU

Sometimes sidechains can be flipped to improve hydrogen bonding and reduce clashes. 5 of 13 such sidechains are listed below:

Mol	Chain	Res	Type
1	C	55	ASN
1	C	110	ASN
1	D	338	HIS
1	D	55	ASN
1	D	110	ASN

5.3.3 RNA ⓘ

There are no RNA molecules in this entry.

5.4 Non-standard residues in protein, DNA, RNA chains ⓘ

There are no non-standard protein/DNA/RNA residues in this entry.

5.5 Carbohydrates ⓘ

There are no oligosaccharides in this entry.

5.6 Ligand geometry

8 ligands are modelled in this entry.

In the following table, the Counts columns list the number of bonds (or angles) for which Mogul statistics could be retrieved, the number of bonds (or angles) that are observed in the model and the number of bonds (or angles) that are defined in the Chemical Component Dictionary. The Link column lists molecule types, if any, to which the group is linked. The Z score for a bond length (or angle) is the number of standard deviations the observed value is removed from the expected value. A bond length (or angle) with $|Z| > 2$ is considered an outlier worth inspection. RMSZ is the root-mean-square of all Z scores of the bond lengths (or angles).

Mol	Type	Chain	Res	Link	Bond lengths			Bond angles		
					Counts	RMSZ	# Z > 2	Counts	RMSZ	# Z > 2
3	PLP	C	503	1	15,15,16	2.88	4 (26%)	21,22,23	1.69	7 (33%)
3	PLP	B	502	1	15,15,16	2.95	5 (33%)	21,22,23	1.41	3 (14%)
3	PLP	A	502	1	15,15,16	2.25	6 (40%)	21,22,23	2.11	8 (38%)
4	GOL	C	502	-	5,5,5	0.66	0	5,5,5	1.18	0
2	FES	A	501	1	0,4,4	-	-	-		
2	FES	C	501	1	0,4,4	-	-	-		
3	PLP	D	501	1	15,15,16	2.11	5 (33%)	21,22,23	2.12	5 (23%)
4	GOL	B	501	-	5,5,5	1.08	1 (20%)	5,5,5	1.69	2 (40%)

In the following table, the Chirals column lists the number of chiral outliers, the number of chiral centers analysed, the number of these observed in the model and the number defined in the Chemical Component Dictionary. Similar counts are reported in the Torsion and Rings columns. '-' means no outliers of that kind were identified.

Mol	Type	Chain	Res	Link	Chirals	Torsions	Rings
3	PLP	C	503	1	-	0/6/6/8	0/1/1/1
3	PLP	B	502	1	-	0/6/6/8	0/1/1/1
3	PLP	A	502	1	-	0/6/6/8	0/1/1/1
4	GOL	C	502	-	-	2/4/4/4	-
2	FES	A	501	1	-	-	0/1/1/1
2	FES	C	501	1	-	-	0/1/1/1
3	PLP	D	501	1	-	0/6/6/8	0/1/1/1
4	GOL	B	501	-	-	1/4/4/4	-

The worst 5 of 21 bond length outliers are listed below:

Mol	Chain	Res	Type	Atoms	Z	Observed(Å)	Ideal(Å)
3	C	503	PLP	C3-C2	8.36	1.49	1.41
3	B	502	PLP	C5-C4	7.34	1.48	1.40
3	B	502	PLP	C3-C2	6.50	1.47	1.41

Continued on next page...

Continued from previous page...

Mol	Chain	Res	Type	Atoms	Z	Observed(Å)	Ideal(Å)
3	D	501	PLP	C3-C2	5.69	1.46	1.41
3	A	502	PLP	C5-C4	5.43	1.46	1.40

The worst 5 of 25 bond angle outliers are listed below:

Mol	Chain	Res	Type	Atoms	Z	Observed(°)	Ideal(°)
3	D	501	PLP	C4A-C4-C5	5.75	126.87	120.94
3	A	502	PLP	C6-C5-C4	5.43	122.55	118.10
3	D	501	PLP	O4P-C5A-C5	4.53	117.84	109.36
3	A	502	PLP	O3P-P-O2P	3.67	121.55	107.80
3	A	502	PLP	O4P-C5A-C5	3.24	115.43	109.36

There are no chirality outliers.

All (3) torsion outliers are listed below:

Mol	Chain	Res	Type	Atoms
4	B	501	GOL	C1-C2-C3-O3
4	C	502	GOL	C1-C2-C3-O3
4	C	502	GOL	O2-C2-C3-O3

There are no ring outliers.

1 monomer is involved in 3 short contacts:

Mol	Chain	Res	Type	Clashes	Symm-Clashes
4	B	501	GOL	3	0

5.7 Other polymers [i](#)

There are no such residues in this entry.

5.8 Polymer linkage issues [i](#)

There are no chain breaks in this entry.

6 Fit of model and data [i](#)

6.1 Protein, DNA and RNA chains [i](#)

In the following table, the column labelled ‘#RSRZ> 2’ contains the number (and percentage) of RSRZ outliers, followed by percent RSRZ outliers for the chain as percentile scores relative to all X-ray entries and entries of similar resolution. The OWAB column contains the minimum, median, 95th percentile and maximum values of the occupancy-weighted average B-factor per residue. The column labelled ‘Q< 0.9’ lists the number of (and percentage) of residues with an average occupancy less than 0.9.

Mol	Chain	Analysed	<RSRZ>	#RSRZ>2	OWAB(Å ²)	Q<0.9
1	A	461/463 (99%)	-0.30	7 (1%) 71 76	6, 17, 33, 65	14 (3%)
1	B	462/463 (99%)	-0.09	6 (1%) 74 79	8, 19, 33, 86	12 (2%)
1	C	462/463 (99%)	-0.20	6 (1%) 74 79	5, 17, 31, 51	10 (2%)
1	D	463/463 (100%)	-0.33	8 (1%) 69 74	6, 15, 28, 84	16 (3%)
All	All	1848/1852 (99%)	-0.23	27 (1%) 71 76	5, 17, 31, 86	52 (2%)

The worst 5 of 27 RSRZ outliers are listed below:

Mol	Chain	Res	Type	RSRZ
1	B	11	PHE	9.6
1	D	11	PHE	7.8
1	D	10	GLY	6.8
1	C	11	PHE	5.4
1	B	472	LYS	4.6

6.2 Non-standard residues in protein, DNA, RNA chains [i](#)

There are no non-standard protein/DNA/RNA residues in this entry.

6.3 Carbohydrates [i](#)

There are no monosaccharides in this entry.

6.4 Ligands [i](#)

In the following table, the Atoms column lists the number of modelled atoms in the group and the number defined in the chemical component dictionary. The B-factors column lists the minimum, median, 95th percentile and maximum values of B factors of atoms in the group. The column labelled ‘Q< 0.9’ lists the number of atoms with occupancy less than 0.9.

Mol	Type	Chain	Res	Atoms	RSCC	RSR	B-factors(\AA^2)	Q<0.9
4	GOL	B	501	6/6	0.86	0.16	23,38,46,49	0
4	GOL	C	502	6/6	0.86	0.14	36,47,48,48	0
3	PLP	B	502	15/16	0.97	0.07	13,16,19,22	0
3	PLP	D	501	15/16	0.98	0.06	10,14,17,24	0
3	PLP	C	503	15/16	0.99	0.04	10,12,15,21	0
3	PLP	A	502	15/16	0.99	0.04	12,15,19,20	0
2	FES	A	501	4/4	1.00	0.02	13,13,13,13	0
2	FES	C	501	4/4	1.00	0.02	11,11,11,12	0

6.5 Other polymers [i](#)

There are no such residues in this entry.