



Full wwPDB X-ray Structure Validation Report ⓘ

Mar 31, 2025 – 08:39 PM JST

PDB ID : 5Y2F / pdb_00005y2f
Title : Human SIRT6 in complex with allosteric activator MDL-801
Authors : Zhang, J.; Huang, Z.; Song, K.
Deposited on : 2017-07-25
Resolution : 2.53 Å(reported)

This is a Full wwPDB X-ray Structure Validation Report for a publicly released PDB entry.

We welcome your comments at validation@mail.wwpdb.org

A user guide is available at

<https://www.wwpdb.org/validation/2017/XrayValidationReportHelp>

with specific help available everywhere you see the ⓘ symbol.

The types of validation reports are described at

<http://www.wwpdb.org/validation/2017/FAQs#types>.

The following versions of software and data (see [references ⓘ](#)) were used in the production of this report:

MolProbity : 4.02b-467
Mogul : 1.8.5 (274361), CSD as541be (2020)
Xtriage (Phenix) : 2.0rc1
EDS : 3.0
buster-report : 1.1.7 (2018)
Percentile statistics : 20231227.v01 (using entries in the PDB archive December 27th 2023)
CCP4 : 9.0.006 (Gargrove)
Density-Fitness : 1.0.12
Ideal geometry (proteins) : Engh & Huber (2001)
Ideal geometry (DNA, RNA) : Parkinson et al. (1996)
Validation Pipeline (wwPDB-VP) : 2.42

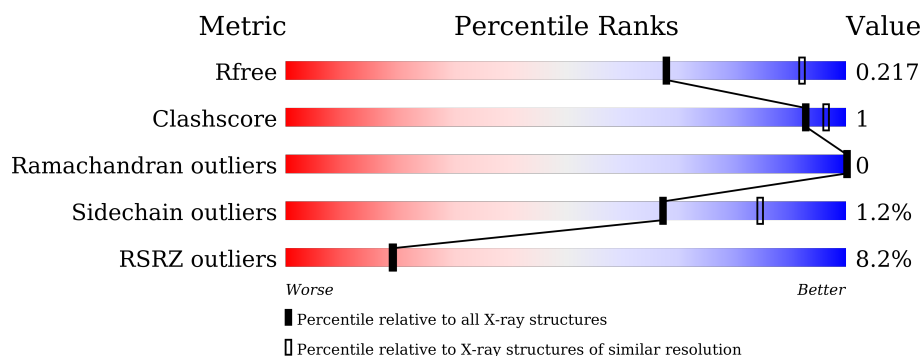
1 Overall quality at a glance

The following experimental techniques were used to determine the structure:

X-RAY DIFFRACTION

The reported resolution of this entry is 2.53 Å.

Percentile scores (ranging between 0-100) for global validation metrics of the entry are shown in the following graphic. The table shows the number of entries on which the scores are based.



Metric	Whole archive (#Entries)	Similar resolution (#Entries, resolution range(Å))
R_{free}	164625	6935 (2.54-2.50)
Clashscore	180529	7778 (2.54-2.50)
Ramachandran outliers	177936	7674 (2.54-2.50)
Sidechain outliers	177891	7676 (2.54-2.50)
RSRZ outliers	164620	6935 (2.54-2.50)

The table below summarises the geometric issues observed across the polymeric chains and their fit to the electron density. The red, orange, yellow and green segments of the lower bar indicate the fraction of residues that contain outliers for ≥ 3 , 2, 1 and 0 types of geometric quality criteria respectively. A grey segment represents the fraction of residues that are not modelled. The numeric value for each fraction is indicated below the corresponding segment, with a dot representing fractions $\leq 5\%$. The upper red bar (where present) indicates the fraction of residues that have poor fit to the electron density. The numeric value is given above the bar.

Mol	Chain	Length	Quality of chain
1	A	316	<div> <div>7%</div> <div>91%</div> <div>6%</div> </div>
2	C	9	<div> <div>33%</div> <div>89%</div> <div>11%</div> </div>

2 Entry composition [i](#)

There are 10 unique types of molecules in this entry. The entry contains 2669 atoms, of which 0 are hydrogens and 0 are deuteriums.

In the tables below, the ZeroOcc column contains the number of atoms modelled with zero occupancy, the AltConf column contains the number of residues with at least one atom in alternate conformation and the Trace column contains the number of residues modelled with at most 2 atoms.

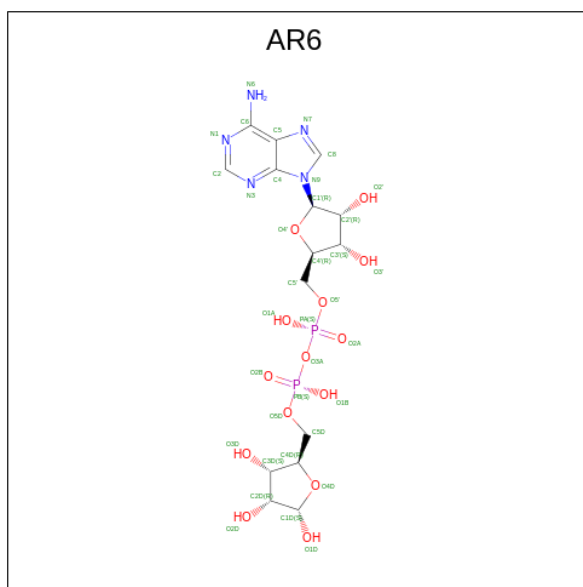
- Molecule 1 is a protein called NAD-dependent protein deacetylase sirtuin-6.

Mol	Chain	Residues	Atoms					ZeroOcc	AltConf	Trace
1	A	297	Total	C	N	O	S	0	1	0
			2326	1462	431	422	11			

- Molecule 2 is a protein called 9-mer peptide QTARKSTGG.

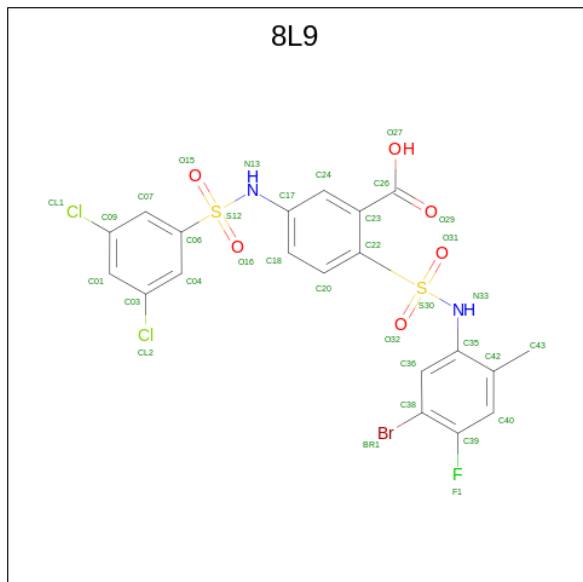
Mol	Chain	Residues	Atoms				ZeroOcc	AltConf	Trace
2	C	8	Total	C	N	O	0	0	0
			53	30	12	11			

- Molecule 3 is [(2R,3S,4R,5R)-5-(6-AMINOPURIN-9-YL)-3,4-DIHYDROXY-OXOLAN-2-YL]METHYL[HYDROXY-[(2R,3S,4R,5S)-3,4,5-TRIHYDROXYOXOLAN-2-YL]METHOXY]PHOSPHORYL] HYDROGEN PHOSPHATE (CCD ID: AR6) (formula: C₁₅H₂₃N₅O₁₄P₂).



Mol	Chain	Residues	Atoms					ZeroOcc	AltConf
3	A	1	Total	C	N	O	P	0	0
			36	15	5	14	2		

- Molecule 4 is 5-[[3,5-bis(chloranyl)phenyl]sulfonylamino]-2-[(5-bromanyl-4-fluoranyl-2-methyl-phenyl)sulfamoyl]benzoic acid (CCD ID: 8L9) (formula: $C_{20}H_{14}BrCl_2FN_2O_6S_2$).

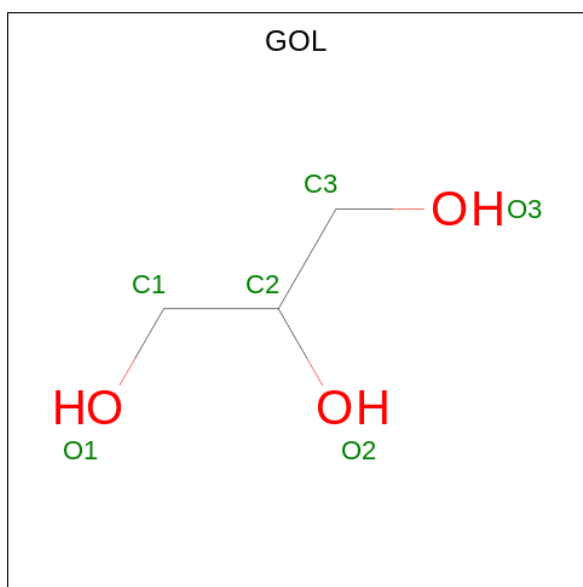


Mol	Chain	Residues	Atoms								ZeroOcc	AltConf
4	A	1	Total	Br	C	Cl	F	N	O	S	0	0
			34	1	20	2	1	2	6	2		

- Molecule 5 is ZINC ION (CCD ID: ZN) (formula: Zn).

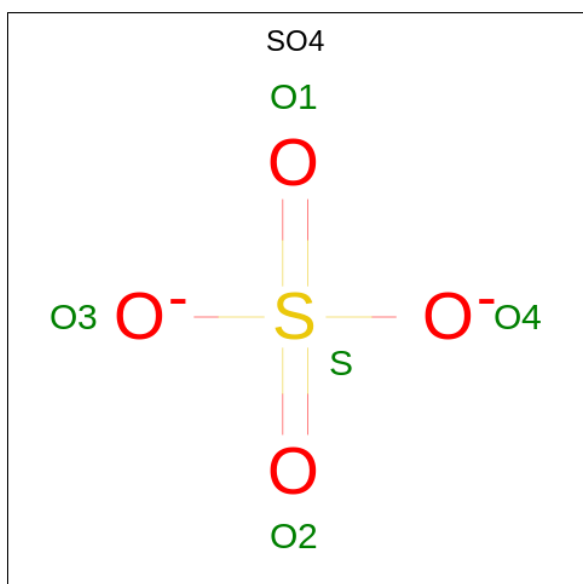
Mol	Chain	Residues	Atoms		ZeroOcc	AltConf
5	A	1	Total	Zn	0	0
			1	1		

- Molecule 6 is GLYCEROL (CCD ID: GOL) (formula: $C_3H_8O_3$).



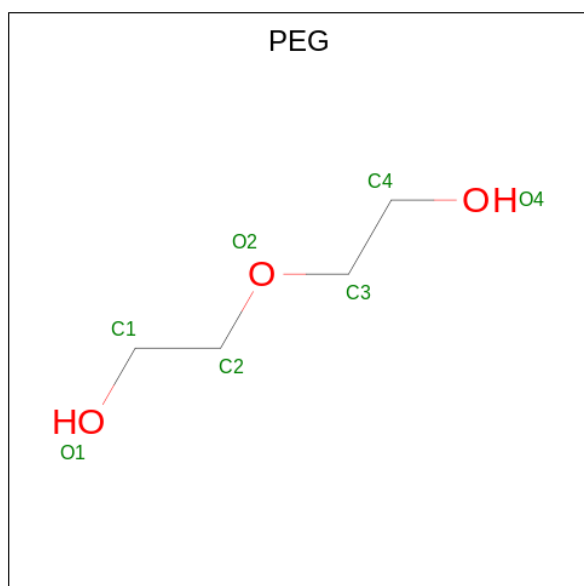
Mol	Chain	Residues	Atoms			ZeroOcc	AltConf
6	A	1	Total	C	O	0	0
			6	3	3		
6	A	1	Total	C	O	0	0
			6	3	3		
6	A	1	Total	C	O	0	0
			6	3	3		
6	A	1	Total	C	O	0	0
			6	3	3		
6	A	1	Total	C	O	0	0
			6	3	3		

- Molecule 7 is SULFATE ION (CCD ID: SO4) (formula: O₄S).



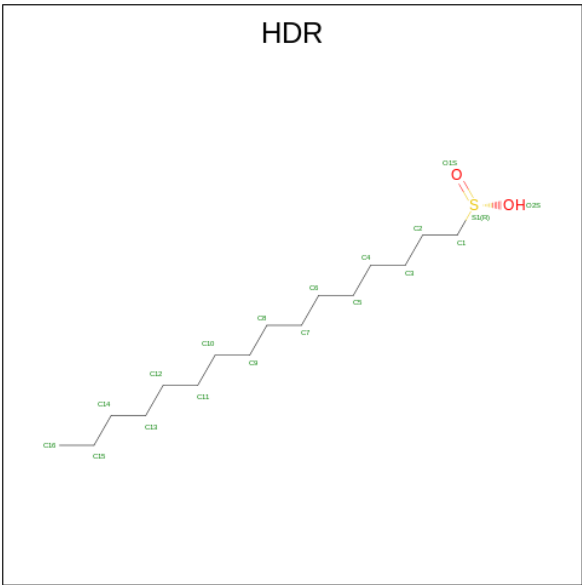
Mol	Chain	Residues	Atoms	ZeroOcc	AltConf
7	A	1	Total O S 5 4 1	0	0
7	A	1	Total O S 5 4 1	0	0
7	A	1	Total O S 5 4 1	0	0
7	A	1	Total O S 5 4 1	0	0
7	A	1	Total O S 5 4 1	0	0
7	A	1	Total O S 5 4 1	0	0
7	C	1	Total O S 5 4 1	0	0

- Molecule 8 is DI(HYDROXYETHYL)ETHER (CCD ID: PEG) (formula: C₄H₁₀O₃).



Mol	Chain	Residues	Atoms	ZeroOcc	AltConf
8	A	1	Total C O 7 4 3	0	0

- Molecule 9 is HEXADECANE-1-SULFINIC ACID (CCD ID: HDR) (formula: C₁₆H₃₄O₂S).



Mol	Chain	Residues	Atoms			ZeroOcc	AltConf
9	C	1	Total	C	S	0	0
			15	14	1		

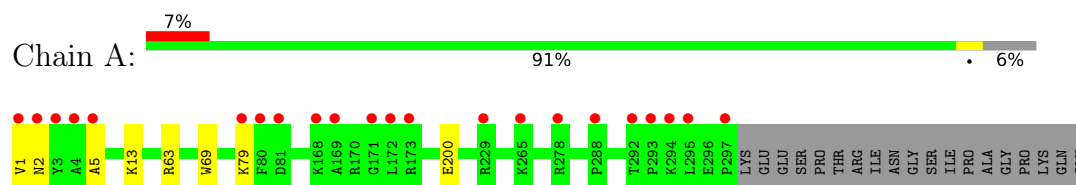
- Molecule 10 is water.

Mol	Chain	Residues	Atoms		ZeroOcc	AltConf
10	A	125	Total	O	0	0
			125	125		
10	C	7	Total	O	0	0
			7	7		

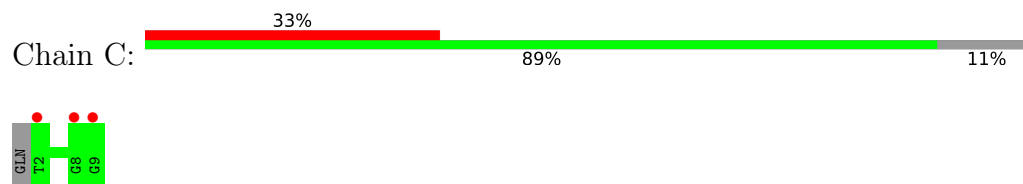
3 Residue-property plots [i](#)

These plots are drawn for all protein, RNA, DNA and oligosaccharide chains in the entry. The first graphic for a chain summarises the proportions of the various outlier classes displayed in the second graphic. The second graphic shows the sequence view annotated by issues in geometry and electron density. Residues are color-coded according to the number of geometric quality criteria for which they contain at least one outlier: green = 0, yellow = 1, orange = 2 and red = 3 or more. A red dot above a residue indicates a poor fit to the electron density ($RSRZ > 2$). Stretches of 2 or more consecutive residues without any outlier are shown as a green connector. Residues present in the sample, but not in the model, are shown in grey.

- Molecule 1: NAD-dependent protein deacetylase sirtuin-6



- Molecule 2: 9-mer peptide QTARKSTGG



4 Data and refinement statistics

Property	Value	Source
Space group	P 41 3 2	Depositor
Cell constants a, b, c, α , β , γ	162.42Å 162.42Å 162.42Å 90.00° 90.00° 90.00°	Depositor
Resolution (Å)	114.85 – 2.53 114.85 – 2.53	Depositor EDS
% Data completeness (in resolution range)	98.7 (114.85-2.53) 98.7 (114.85-2.53)	Depositor EDS
R_{merge}	0.14	Depositor
R_{sym}	(Not available)	Depositor
$\langle I/\sigma(I) \rangle$ ¹	2.11 (at 2.52Å)	Xtriage
Refinement program	REFMAC 5.8.0135	Depositor
R, R_{free}	0.175 , 0.217 0.183 , 0.217	Depositor DCC
R_{free} test set	1269 reflections (5.09%)	wwPDB-VP
Wilson B-factor (Å ²)	60.5	Xtriage
Anisotropy	0.000	Xtriage
Bulk solvent k_{sol} (e/Å ³), B_{sol} (Å ²)	0.33 , 43.9	EDS
L-test for twinning ²	$\langle L \rangle = 0.49$, $\langle L^2 \rangle = 0.33$	Xtriage
Estimated twinning fraction	No twinning to report.	Xtriage
F_o, F_c correlation	0.95	EDS
Total number of atoms	2669	wwPDB-VP
Average B, all atoms (Å ²)	70.0	wwPDB-VP

Xtriage's analysis on translational NCS is as follows: *The largest off-origin peak in the Patterson function is 2.08% of the height of the origin peak. No significant pseudotranslation is detected.*

¹Intensities estimated from amplitudes.

²Theoretical values of $\langle |L| \rangle$, $\langle L^2 \rangle$ for acentric reflections are 0.5, 0.333 respectively for untwinned datasets, and 0.375, 0.2 for perfectly twinned datasets.

5 Model quality [i](#)

5.1 Standard geometry [i](#)

Bond lengths and bond angles in the following residue types are not validated in this section: 8L9, ZN, AR6, PEG, SO4, HDR, GOL

The Z score for a bond length (or angle) is the number of standard deviations the observed value is removed from the expected value. A bond length (or angle) with $|Z| > 5$ is considered an outlier worth inspection. RMSZ is the root-mean-square of all Z scores of the bond lengths (or angles).

Mol	Chain	Bond lengths		Bond angles	
		RMSZ	# Z >5	RMSZ	# Z >5
1	A	0.50	0/2378	0.74	0/3226
2	C	0.70	0/52	0.94	0/67
All	All	0.50	0/2430	0.74	0/3293

There are no bond length outliers.

There are no bond angle outliers.

There are no chirality outliers.

There are no planarity outliers.

5.2 Too-close contacts [i](#)

In the following table, the Non-H and H(model) columns list the number of non-hydrogen atoms and hydrogen atoms in the chain respectively. The H(added) column lists the number of hydrogen atoms added and optimized by MolProbity. The Clashes column lists the number of clashes within the asymmetric unit, whereas Symm-Clashes lists symmetry-related clashes.

Mol	Chain	Non-H	H(model)	H(added)	Clashes	Symm-Clashes
1	A	2326	0	2350	5	0
2	C	53	0	53	0	0
3	A	36	0	21	3	0
4	A	34	0	0	2	0
5	A	1	0	0	0	0
6	A	30	0	40	2	0
7	A	30	0	0	0	0
7	C	5	0	0	0	0
8	A	7	0	10	0	0
9	C	15	0	0	0	0
10	A	125	0	0	0	0

Continued on next page...

Continued from previous page...

Mol	Chain	Non-H	H(model)	H(added)	Clashes	Symm-Clashes
10	C	7	0	0	0	0
All	All	2669	0	2474	7	0

The all-atom clashscore is defined as the number of clashes found per 1000 atoms (including hydrogen atoms). The all-atom clashscore for this structure is 1.

All (7) close contacts within the same asymmetric unit are listed below, sorted by their clash magnitude.

Atom-1	Atom-2	Interatomic distance (Å)	Clash overlap (Å)
1:A:63:ARG:HH12	3:A:401:AR6:C5D	2.18	0.56
4:A:402:8L9:BR1	6:A:408:GOL:H32	2.64	0.53
1:A:63:ARG:HH12	3:A:401:AR6:H5DA	1.75	0.51
1:A:1:VAL:HG21	1:A:13:LYS:NZ	2.26	0.49
4:A:402:8L9:BR1	6:A:408:GOL:C3	3.17	0.48
1:A:2:ASN:HB2	1:A:5:ALA:HB3	2.00	0.44
1:A:63:ARG:HH12	3:A:401:AR6:H5D	1.83	0.43

There are no symmetry-related clashes.

5.3 Torsion angles [i](#)

5.3.1 Protein backbone [i](#)

In the following table, the Percentiles column shows the percent Ramachandran outliers of the chain as a percentile score with respect to all X-ray entries followed by that with respect to entries of similar resolution.

The Analysed column shows the number of residues for which the backbone conformation was analysed, and the total number of residues.

Mol	Chain	Analysed	Favoured	Allowed	Outliers	Percentiles	
1	A	296/316 (94%)	291 (98%)	5 (2%)	0	100	100
2	C	6/9 (67%)	6 (100%)	0	0	100	100
All	All	302/325 (93%)	297 (98%)	5 (2%)	0	100	100

There are no Ramachandran outliers to report.

5.3.2 Protein sidechains [i](#)

In the following table, the Percentiles column shows the percent sidechain outliers of the chain as a percentile score with respect to all X-ray entries followed by that with respect to entries of similar resolution.

The Analysed column shows the number of residues for which the sidechain conformation was analysed, and the total number of residues.

Mol	Chain	Analysed	Rotameric	Outliers	Percentiles	
1	A	250/265 (94%)	247 (99%)	3 (1%)	67	85
2	C	5/6 (83%)	5 (100%)	0	100	100
All	All	255/271 (94%)	252 (99%)	3 (1%)	67	85

All (3) residues with a non-rotameric sidechain are listed below:

Mol	Chain	Res	Type
1	A	69	TRP
1	A	79	LYS
1	A	200	GLU

Sometimes sidechains can be flipped to improve hydrogen bonding and reduce clashes. There are no such sidechains identified.

5.3.3 RNA [i](#)

There are no RNA molecules in this entry.

5.4 Non-standard residues in protein, DNA, RNA chains [i](#)

There are no non-standard protein/DNA/RNA residues in this entry.

5.5 Carbohydrates [i](#)

There are no oligosaccharides in this entry.

5.6 Ligand geometry [i](#)

Of 17 ligands modelled in this entry, 1 is monoatomic - leaving 16 for Mogul analysis.

In the following table, the Counts columns list the number of bonds (or angles) for which Mogul statistics could be retrieved, the number of bonds (or angles) that are observed in the model and

the number of bonds (or angles) that are defined in the Chemical Component Dictionary. The Link column lists molecule types, if any, to which the group is linked. The Z score for a bond length (or angle) is the number of standard deviations the observed value is removed from the expected value. A bond length (or angle) with $|Z| > 2$ is considered an outlier worth inspection. RMSZ is the root-mean-square of all Z scores of the bond lengths (or angles).

Mol	Type	Chain	Res	Link	Bond lengths			Bond angles		
					Counts	RMSZ	# Z > 2	Counts	RMSZ	# Z > 2
9	HDR	C	101	2	14,14,18	1.82	1 (7%)	13,13,18	1.04	1 (7%)
7	SO4	A	409	-	4,4,4	0.37	0	6,6,6	0.15	0
6	GOL	A	406	-	5,5,5	0.36	0	5,5,5	0.26	0
6	GOL	A	404	-	5,5,5	0.45	0	5,5,5	0.40	0
7	SO4	A	410	-	4,4,4	0.36	0	6,6,6	0.11	0
3	AR6	A	401	-	34,39,39	0.98	2 (5%)	40,60,60	1.66	7 (17%)
6	GOL	A	408	-	5,5,5	0.42	0	5,5,5	0.55	0
4	8L9	A	402	-	36,36,36	1.69	3 (8%)	54,55,55	1.44	6 (11%)
6	GOL	A	407	-	5,5,5	0.37	0	5,5,5	0.39	0
7	SO4	A	413	-	4,4,4	0.36	0	6,6,6	0.26	0
7	SO4	C	102	-	4,4,4	0.33	0	6,6,6	0.15	0
7	SO4	A	411	-	4,4,4	0.33	0	6,6,6	0.29	0
7	SO4	A	414	-	4,4,4	0.39	0	6,6,6	0.18	0
8	PEG	A	415	-	6,6,6	0.65	0	5,5,5	0.52	0
7	SO4	A	412	-	4,4,4	0.44	0	6,6,6	0.32	0
6	GOL	A	405	-	5,5,5	0.31	0	5,5,5	0.58	0

In the following table, the Chirals column lists the number of chiral outliers, the number of chiral centers analysed, the number of these observed in the model and the number defined in the Chemical Component Dictionary. Similar counts are reported in the Torsion and Rings columns. '-' means no outliers of that kind were identified.

Mol	Type	Chain	Res	Link	Chirals	Torsions	Rings
9	HDR	C	101	2	-	7/12/12/16	-
6	GOL	A	406	-	-	2/4/4/4	-
6	GOL	A	404	-	-	4/4/4/4	-
3	AR6	A	401	-	-	8/18/54/54	0/4/4/4
6	GOL	A	408	-	-	0/4/4/4	-
4	8L9	A	402	-	-	11/26/26/26	0/3/3/3
6	GOL	A	407	-	-	2/4/4/4	-
8	PEG	A	415	-	-	3/4/4/4	-
6	GOL	A	405	-	-	2/4/4/4	-

All (6) bond length outliers are listed below:

Mol	Chain	Res	Type	Atoms	Z	Observed(Å)	Ideal(Å)
9	C	101	HDR	C1-S1	-6.72	1.57	1.80
4	A	402	8L9	S30-N33	5.90	1.73	1.63
4	A	402	8L9	S12-N13	4.50	1.71	1.63
4	A	402	8L9	C20-C22	2.32	1.41	1.39
3	A	401	AR6	O4'-C1'	2.23	1.44	1.41
3	A	401	AR6	O5D-C5D	-2.19	1.36	1.44

All (14) bond angle outliers are listed below:

Mol	Chain	Res	Type	Atoms	Z	Observed(°)	Ideal(°)
3	A	401	AR6	O1D-C1D-O4D	-4.97	104.77	111.13
3	A	401	AR6	N3-C2-N1	-3.95	122.51	128.68
3	A	401	AR6	O4D-C4D-C5D	-3.94	96.40	109.37
4	A	402	8L9	O31-S30-C22	-3.45	101.99	107.66
4	A	402	8L9	C06-S12-N13	-3.43	102.52	106.83
4	A	402	8L9	C42-C35-N33	3.33	123.83	120.38
4	A	402	8L9	O32-S30-O31	-2.85	116.04	119.55
9	C	101	HDR	C3-C2-C1	-2.80	108.10	113.09
4	A	402	8L9	C09-C01-C03	2.68	120.50	117.37
3	A	401	AR6	O1B-PB-O5D	-2.64	95.51	107.75
4	A	402	8L9	C40-C39-C38	-2.44	119.61	122.02
3	A	401	AR6	O1B-PB-O2B	2.23	123.28	112.24
3	A	401	AR6	C3'-C2'-C1'	2.15	104.21	100.98
3	A	401	AR6	N6-C6-N1	2.12	122.97	118.57

There are no chirality outliers.

All (39) torsion outliers are listed below:

Mol	Chain	Res	Type	Atoms
3	A	401	AR6	PB-O3A-PA-O5'
3	A	401	AR6	C5D-O5D-PB-O3A
6	A	404	GOL	C1-C2-C3-O3
6	A	406	GOL	O1-C1-C2-O2
6	A	406	GOL	O1-C1-C2-C3
6	A	407	GOL	C1-C2-C3-O3
4	A	402	8L9	C17-N13-S12-O15
4	A	402	8L9	C17-N13-S12-O16
8	A	415	PEG	O2-C3-C4-O4
4	A	402	8L9	C17-N13-S12-C06
8	A	415	PEG	O1-C1-C2-O2
9	C	101	HDR	C9-C10-C11-C12
4	A	402	8L9	C22-C23-C26-O27

Continued on next page...

Continued from previous page...

Mol	Chain	Res	Type	Atoms
4	A	402	8L9	C22-C23-C26-O29
6	A	404	GOL	O1-C1-C2-C3
6	A	405	GOL	C1-C2-C3-O3
4	A	402	8L9	C04-C06-S12-O15
4	A	402	8L9	C07-C06-S12-O15
9	C	101	HDR	C7-C8-C9-C10
6	A	404	GOL	O2-C2-C3-O3
9	C	101	HDR	C5-C6-C7-C8
6	A	407	GOL	O2-C2-C3-O3
4	A	402	8L9	C07-C06-S12-N13
4	A	402	8L9	C24-C23-C26-O29
4	A	402	8L9	C04-C06-S12-N13
4	A	402	8L9	C24-C23-C26-O27
8	A	415	PEG	C1-C2-O2-C3
6	A	404	GOL	O1-C1-C2-O2
9	C	101	HDR	S1-C1-C2-C3
3	A	401	AR6	C5D-O5D-PB-O1B
3	A	401	AR6	C5D-O5D-PB-O2B
9	C	101	HDR	C3-C4-C5-C6
6	A	405	GOL	O2-C2-C3-O3
3	A	401	AR6	O4'-C4'-C5'-O5'
3	A	401	AR6	PA-O3A-PB-O2B
9	C	101	HDR	C11-C12-C13-C14
9	C	101	HDR	C2-C3-C4-C5
3	A	401	AR6	O4D-C4D-C5D-O5D
3	A	401	AR6	PA-O3A-PB-O1B

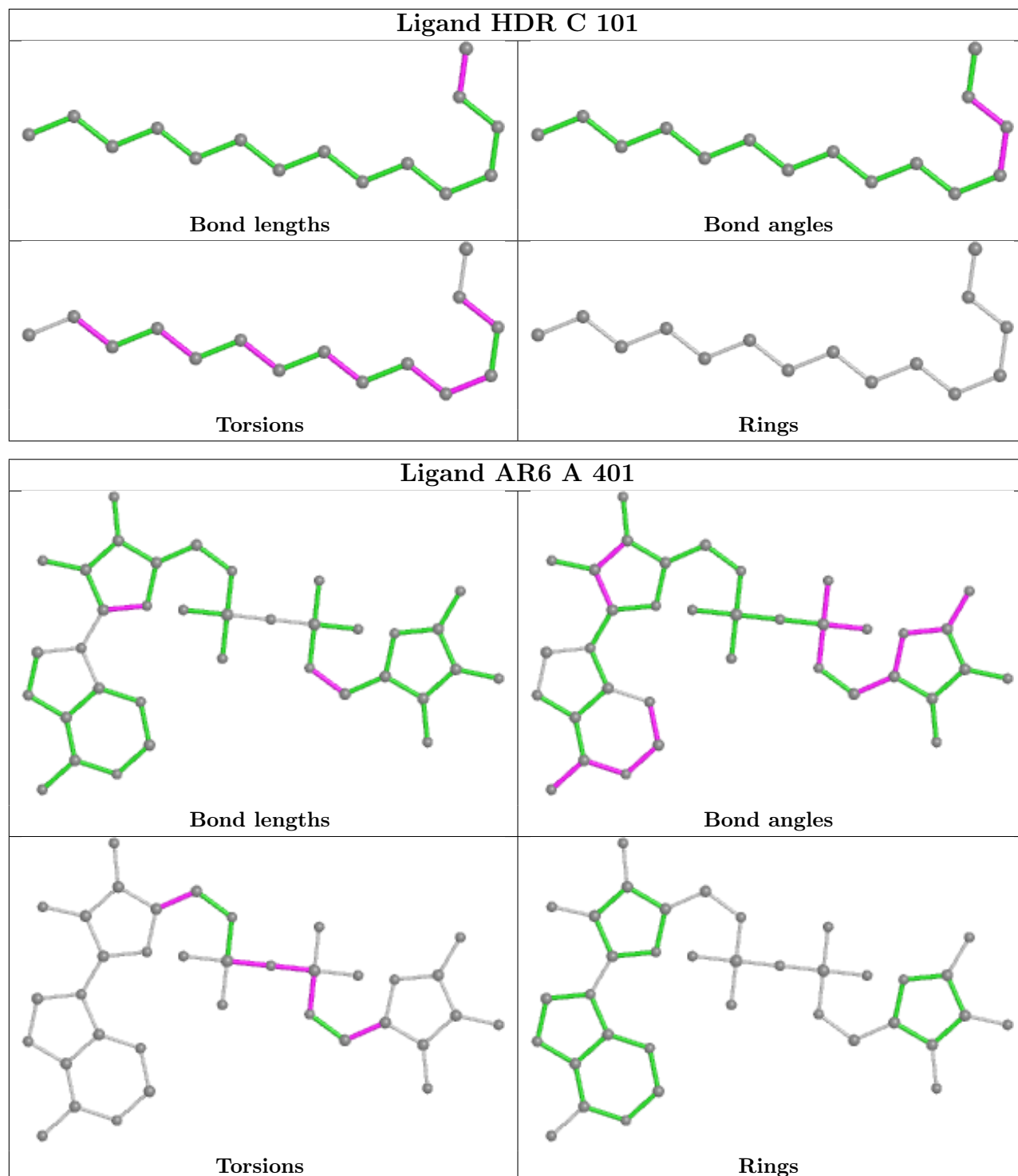
There are no ring outliers.

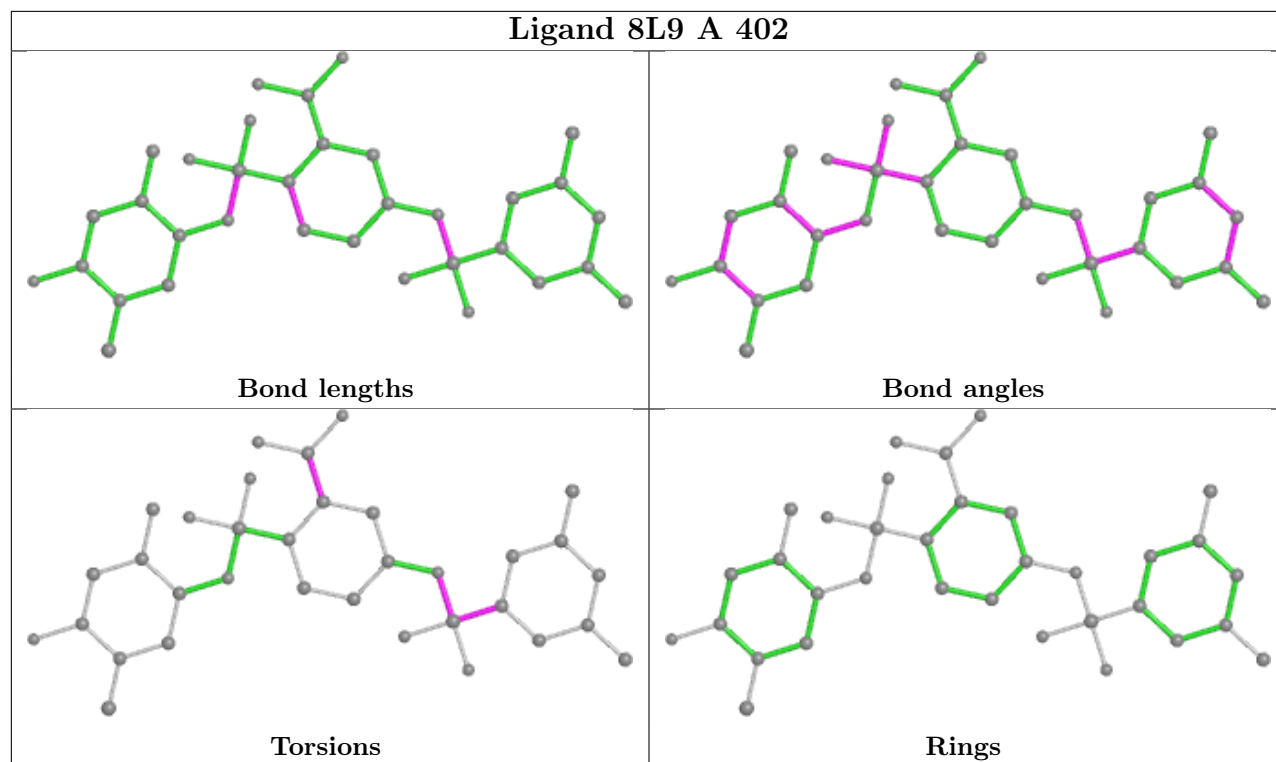
3 monomers are involved in 5 short contacts:

Mol	Chain	Res	Type	Clashes	Symm-Clashes
3	A	401	AR6	3	0
6	A	408	GOL	2	0
4	A	402	8L9	2	0

The following is a two-dimensional graphical depiction of Mogul quality analysis of bond lengths, bond angles, torsion angles, and ring geometry for all instances of the Ligand of Interest. In addition, ligands with molecular weight > 250 and outliers as shown on the validation Tables will also be included. For torsion angles, if less than 5% of the Mogul distribution of torsion angles is within 10 degrees of the torsion angle in question, then that torsion angle is considered an outlier. Any bond that is central to one or more torsion angles identified as an outlier by Mogul will be highlighted in the graph. For rings, the root-mean-square deviation (RMSD) between the ring

in question and similar rings identified by Mogul is calculated over all ring torsion angles. If the average RMSD is greater than 60 degrees and the minimal RMSD between the ring in question and any Mogul-identified rings is also greater than 60 degrees, then that ring is considered an outlier. The outliers are highlighted in purple. The color gray indicates Mogul did not find sufficient equivalents in the CSD to analyse the geometry.





5.7 Other polymers [i](#)

There are no such residues in this entry.

5.8 Polymer linkage issues [i](#)

There are no chain breaks in this entry.

6 Fit of model and data

6.1 Protein, DNA and RNA chains

In the following table, the column labelled ‘#RSRZ > 2’ contains the number (and percentage) of RSRZ outliers, followed by percent RSRZ outliers for the chain as percentile scores relative to all X-ray entries and entries of similar resolution. The OWAB column contains the minimum, median, 95th percentile and maximum values of the occupancy-weighted average B-factor per residue. The column labelled ‘Q < 0.9’ lists the number of (and percentage) of residues with an average occupancy less than 0.9.

Mol	Chain	Analysed	<RSRZ>	#RSRZ>2	OWAB(Å ²)	Q<0.9
1	A	297/316 (93%)	0.22	22 (7%) 22 21	27, 59, 122, 161	1 (0%)
2	C	8/9 (88%)	1.42	3 (37%) 1 1	49, 78, 122, 133	0
All	All	305/325 (93%)	0.25	25 (8%) 19 19	27, 59, 122, 161	1 (0%)

All (25) RSRZ outliers are listed below:

Mol	Chain	Res	Type	RSRZ
1	A	4	ALA	6.5
1	A	3	TYR	6.4
1	A	295	LEU	6.3
1	A	297	PRO	6.0
2	C	9	GLY	6.0
1	A	1	VAL	5.0
1	A	294	LYS	4.1
1	A	80	PHE	4.0
2	C	8	GLY	3.3
1	A	169	ALA	3.2
2	C	2	THR	3.2
1	A	293	PRO	3.1
1	A	173	ARG	3.0
1	A	229	ARG	3.0
1	A	79	LYS	2.9
1	A	265	LYS	2.6
1	A	171	GLY	2.6
1	A	172	LEU	2.5
1	A	168	LYS	2.4
1	A	5	ALA	2.3
1	A	292	THR	2.3
1	A	288	PRO	2.3
1	A	2	ASN	2.2
1	A	278	ARG	2.1

Continued on next page...

Continued from previous page...

Mol	Chain	Res	Type	RSRZ
1	A	81	ASP	2.1

6.2 Non-standard residues in protein, DNA, RNA chains [i](#)

There are no non-standard protein/DNA/RNA residues in this entry.

6.3 Carbohydrates [i](#)

There are no monosaccharides in this entry.

6.4 Ligands [i](#)

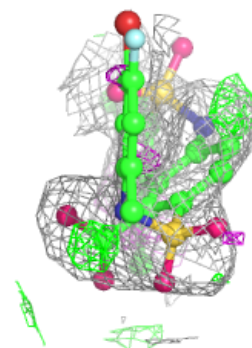
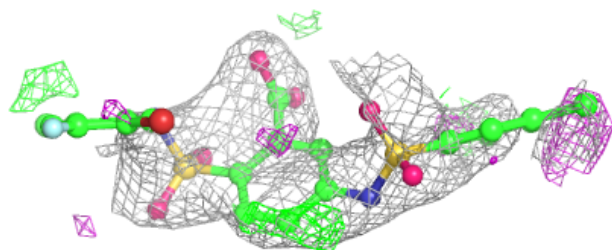
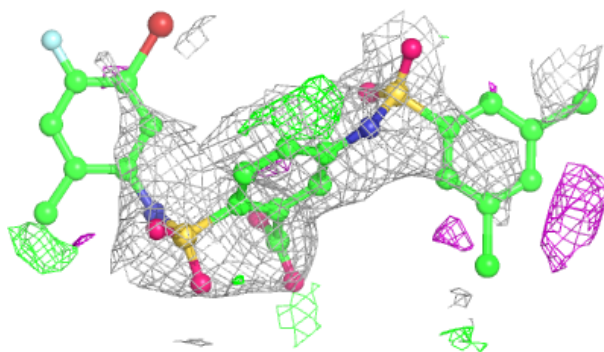
In the following table, the Atoms column lists the number of modelled atoms in the group and the number defined in the chemical component dictionary. The B-factors column lists the minimum, median, 95th percentile and maximum values of B factors of atoms in the group. The column labelled 'Q< 0.9' lists the number of atoms with occupancy less than 0.9.

Mol	Type	Chain	Res	Atoms	RSCC	RSR	B-factors(Å ²)	Q<0.9
7	SO4	A	409	5/5	0.63	0.12	129,143,147,148	0
6	GOL	A	407	6/6	0.67	0.22	121,127,132,135	0
7	SO4	A	410	5/5	0.74	0.14	146,157,158,164	0
6	GOL	A	406	6/6	0.76	0.24	132,133,137,139	0
7	SO4	A	413	5/5	0.77	0.14	114,121,122,125	0
6	GOL	A	408	6/6	0.78	0.24	116,136,139,143	0
7	SO4	C	102	5/5	0.80	0.13	145,148,164,171	0
4	8L9	A	402	34/34	0.82	0.20	107,164,190,238	0
7	SO4	A	414	5/5	0.83	0.09	124,128,136,138	0
7	SO4	A	412	5/5	0.88	0.11	99,111,124,127	0
7	SO4	A	411	5/5	0.89	0.12	126,128,139,143	0
8	PEG	A	415	7/7	0.90	0.24	98,108,117,118	0
6	GOL	A	405	6/6	0.91	0.20	103,109,112,115	0
6	GOL	A	404	6/6	0.92	0.15	71,81,88,88	0
9	HDR	C	101	15/19	0.96	0.15	54,61,99,100	0
3	AR6	A	401	36/36	0.98	0.05	36,44,49,50	0
5	ZN	A	403	1/1	0.99	0.03	63,63,63,63	0

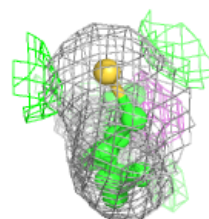
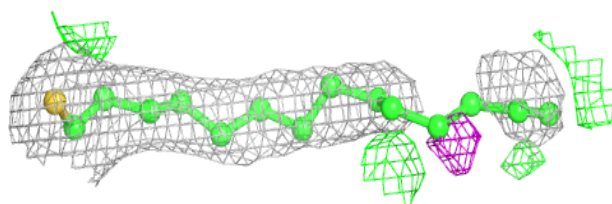
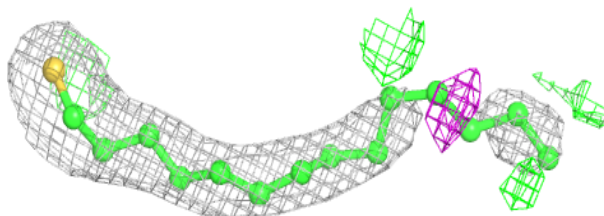
The following is a graphical depiction of the model fit to experimental electron density of all instances of the Ligand of Interest. In addition, ligands with molecular weight > 250 and outliers as shown on the geometry validation Tables will also be included. Each fit is shown from different orientation to approximate a three-dimensional view.

Electron density around 8L9 A 402:

$2mF_o-DF_c$ (at 0.7 rmsd) in gray
 mF_o-DF_c (at 3 rmsd) in purple (negative)
and green (positive)

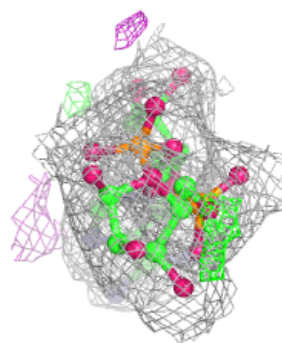
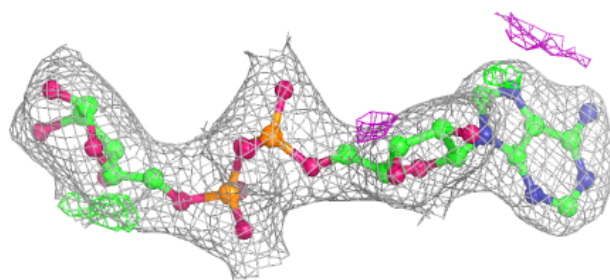
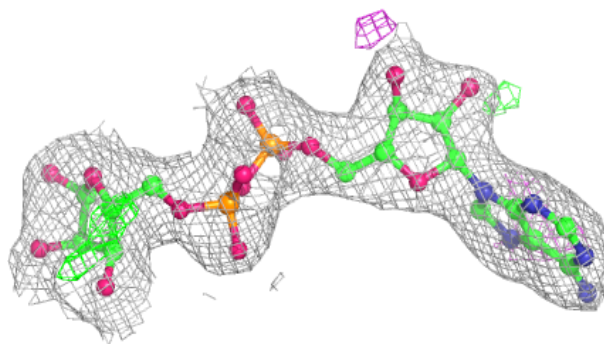
**Electron density around HDR C 101:**

$2mF_o-DF_c$ (at 0.7 rmsd) in gray
 mF_o-DF_c (at 3 rmsd) in purple (negative)
and green (positive)



Electron density around AR6 A 401:

$2mF_o-DF_c$ (at 0.7 rmsd) in gray
 mF_o-DF_c (at 3 rmsd) in purple (negative)
and green (positive)



6.5 Other polymers [i](#)

There are no such residues in this entry.