



# wwPDB X-ray Structure Validation Summary Report ⓘ

Nov 11, 2024 – 06:09 PM EST

PDB ID : 1YO8  
Title : Structure of the C-terminal domain of human thrombospondin-2  
Authors : Carlson, C.B.; Bernstein, D.A.; Annis, D.S.; Misenheimer, T.M.; Hannah, B.A.; Mosher, D.F.; Keck, J.L.  
Deposited on : 2005-01-26  
Resolution : 2.60 Å(reported)

This is a wwPDB X-ray Structure Validation Summary Report for a publicly released PDB entry.

We welcome your comments at [validation@mail.wwpdb.org](mailto:validation@mail.wwpdb.org)

A user guide is available at

<https://www.wwpdb.org/validation/2017/XrayValidationReportHelp>

with specific help available everywhere you see the ⓘ symbol.

The types of validation reports are described at

<http://www.wwpdb.org/validation/2017/FAQs#types>.

---

The following versions of software and data (see [references ⓘ](#)) were used in the production of this report:

MolProbity	:	4.02b-467
Mogul	:	2022.3.0, CSD as543be (2022)
Xtriage (Phenix)	:	1.20.1
EDS	:	3.0
Percentile statistics	:	20231227.v01 (using entries in the PDB archive December 27th 2023)
CCP4	:	9.0.003 (Gargrove)
Density-Fitness	:	1.0.11
Ideal geometry (proteins)	:	Engh & Huber (2001)
Ideal geometry (DNA, RNA)	:	Parkinson et al. (1996)
Validation Pipeline (wwPDB-VP)	:	2.39

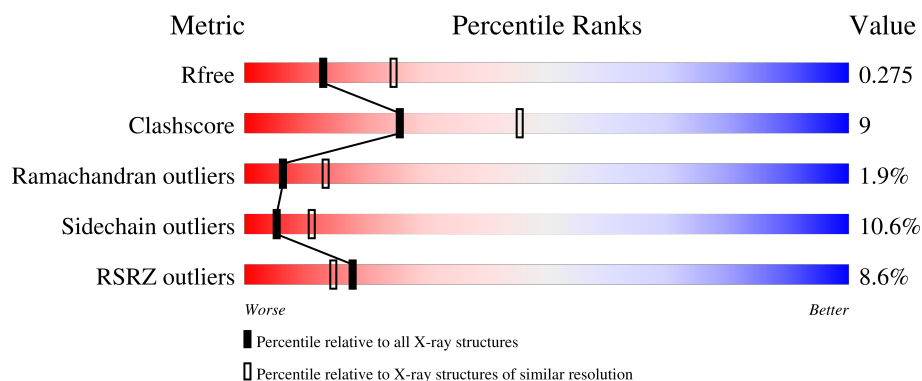
# 1 Overall quality at a glance

The following experimental techniques were used to determine the structure:

*X-RAY DIFFRACTION*

The reported resolution of this entry is 2.60 Å.

Percentile scores (ranging between 0-100) for global validation metrics of the entry are shown in the following graphic. The table shows the number of entries on which the scores are based.



Metric	Whole archive (#Entries)	Similar resolution (#Entries, resolution range(Å))
$R_{free}$	164625	3775 (2.60-2.60)
Clashscore	180529	4181 (2.60-2.60)
Ramachandran outliers	177936	4129 (2.60-2.60)
Sidechain outliers	177891	4129 (2.60-2.60)
RSRZ outliers	164620	3775 (2.60-2.60)

The table below summarises the geometric issues observed across the polymeric chains and their fit to the electron density. The red, orange, yellow and green segments of the lower bar indicate the fraction of residues that contain outliers for  $\geq 3$ , 2, 1 and 0 types of geometric quality criteria respectively. A grey segment represents the fraction of residues that are not modelled. The numeric value for each fraction is indicated below the corresponding segment, with a dot representing fractions  $\leq 5\%$ . The upper red bar (where present) indicates the fraction of residues that have poor fit to the electron density. The numeric value is given above the bar.

Mol	Chain	Length	Quality of chain
1	A	634	<div> <div>8%</div> <div>71%</div> <div>23%</div> <div>• •</div> </div>
2	B	3	<div>100%</div>
3	C	2	<div>50%</div> <div>50%</div>

The following table lists non-polymeric compounds, carbohydrate monomers and non-standard residues in protein, DNA, RNA chains that are outliers for geometric or electron-density-fit criteria:

Mol	Type	Chain	Res	Chirality	Geometry	Clashes	Electron density
2	MAN	B	3	X	-	-	-

## 2 Entry composition

There are 6 unique types of molecules in this entry. The entry contains 5085 atoms, of which 0 are hydrogens and 0 are deuteriums.

In the tables below, the ZeroOcc column contains the number of atoms modelled with zero occupancy, the AltConf column contains the number of residues with at least one atom in alternate conformation and the Trace column contains the number of residues modelled with at most 2 atoms.

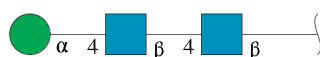
- Molecule 1 is a protein called thrombospondin-2.

Mol	Chain	Residues	Atoms						ZeroOcc	AltConf	Trace
1	A	621	Total	C	N	O	S	Se	0	0	0
			4844	2949	837	1017	36	5			

There are 17 discrepancies between the modelled and reference sequences:

Chain	Residue	Modelled	Actual	Comment	Reference
A	548	ALA	-	cloning artifact	UNP P35442
A	549	ASP	-	cloning artifact	UNP P35442
A	550	PRO	-	cloning artifact	UNP P35442
A	675	MSE	MET	modified residue	UNP P35442
A	964	MSE	MET	modified residue	UNP P35442
A	1041	MSE	MET	modified residue	UNP P35442
A	1134	MSE	MET	modified residue	UNP P35442
A	1159	MSE	MET	modified residue	UNP P35442
A	1173	ALA	-	expression tag	UNP P35442
A	1174	ALA	-	expression tag	UNP P35442
A	1175	GLY	-	expression tag	UNP P35442
A	1176	HIS	-	expression tag	UNP P35442
A	1177	HIS	-	expression tag	UNP P35442
A	1178	HIS	-	expression tag	UNP P35442
A	1179	HIS	-	expression tag	UNP P35442
A	1180	HIS	-	expression tag	UNP P35442
A	1181	HIS	-	expression tag	UNP P35442

- Molecule 2 is an oligosaccharide called alpha-D-mannopyranose-(1-4)-2-acetamido-2-deoxy-beta-D-glucopyranose-(1-4)-2-acetamido-2-deoxy-beta-D-glucopyranose.



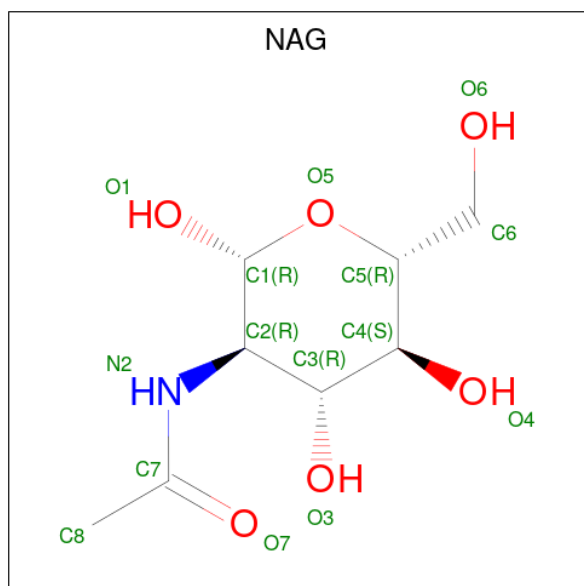
Mol	Chain	Residues	Atoms				ZeroOcc	AltConf	Trace
2	B	3	Total	C	N	O	0	0	0
			39	22	2	15			

- Molecule 3 is an oligosaccharide called 2-acetamido-2-deoxy-beta-D-glucopyranose-(1-4)-2-acetamido-2-deoxy-beta-D-glucopyranose.



Mol	Chain	Residues	Atoms				ZeroOcc	AltConf	Trace
3	C	2	Total	C	N	O	0	0	0
			28	16	2	10			

- Molecule 4 is 2-acetamido-2-deoxy-beta-D-glucopyranose (three-letter code: NAG) (formula:  $C_8H_{15}NO_6$ ).



Mol	Chain	Residues	Atoms				ZeroOcc	AltConf
4	A	1	Total	C	N	O	0	0
			14	8	1	5		
4	A	1	Total	C	N	O	0	0
			14	8	1	5		

- Molecule 5 is CALCIUM ION (three-letter code: CA) (formula: Ca).

Mol	Chain	Residues	Atoms		ZeroOcc	AltConf
5	A	30	Total 30	Ca 30	0	0

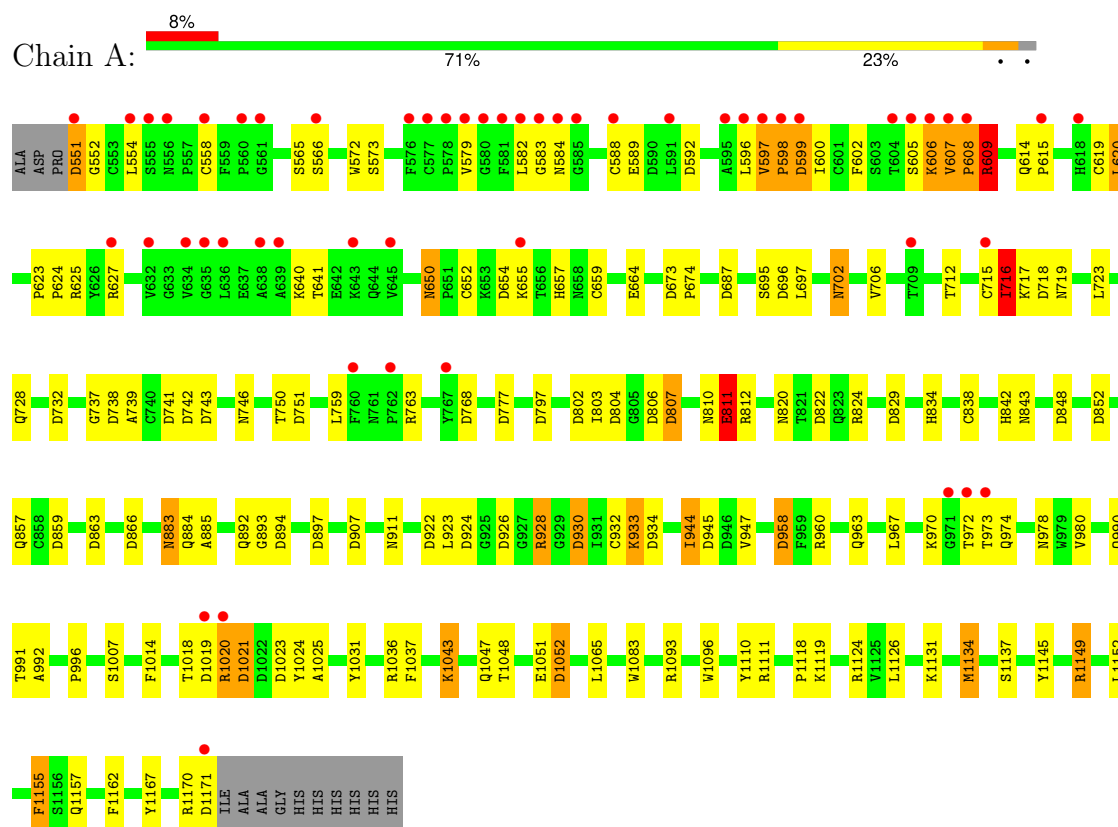
- Molecule 6 is water.

Mol	Chain	Residues	Atoms		ZeroOcc	AltConf
6	A	116	Total 116	O 116	0	0

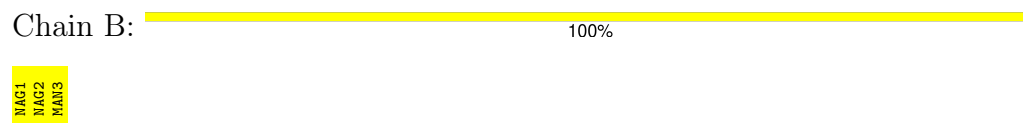
### 3 Residue-property plots [i](#)

These plots are drawn for all protein, RNA, DNA and oligosaccharide chains in the entry. The first graphic for a chain summarises the proportions of the various outlier classes displayed in the second graphic. The second graphic shows the sequence view annotated by issues in geometry and electron density. Residues are color-coded according to the number of geometric quality criteria for which they contain at least one outlier: green = 0, yellow = 1, orange = 2 and red = 3 or more. A red dot above a residue indicates a poor fit to the electron density ( $RSRZ > 2$ ). Stretches of 2 or more consecutive residues without any outlier are shown as a green connector. Residues present in the sample, but not in the model, are shown in grey.

- Molecule 1: thrombospondin-2



- Molecule 2: alpha-D-mannopyranose-(1-4)-2-acetamido-2-deoxy-beta-D-glucopyranose-(1-4)-2-acetamido-2-deoxy-beta-D-glucopyranose



- Molecule 3: 2-acetamido-2-deoxy-beta-D-glucopyranose-(1-4)-2-acetamido-2-deoxy-beta-D-glucopyranose







## 4 Data and refinement statistics

Property	Value	Source
Space group	I 2 2 2	Depositor
Cell constants a, b, c, $\alpha$ , $\beta$ , $\gamma$	93.44Å 121.59Å 155.33Å 90.00° 90.00° 90.00°	Depositor
Resolution (Å)	20.00 – 2.60 20.00 – 2.60	Depositor EDS
% Data completeness (in resolution range)	95.0 (20.00-2.60) 94.7 (20.00-2.60)	Depositor EDS
$R_{merge}$	(Not available)	Depositor
$R_{sym}$	0.08	Depositor
$\langle I/\sigma(I) \rangle$ <sup>1</sup>	3.59 (at 2.60Å)	Xtriage
Refinement program	REFMAC 5.1.24	Depositor
R, $R_{free}$	0.218 , 0.284 0.216 , 0.275	Depositor DCC
$R_{free}$ test set	2575 reflections (9.86%)	wwPDB-VP
Wilson B-factor (Å <sup>2</sup> )	41.8	Xtriage
Anisotropy	0.803	Xtriage
Bulk solvent $k_{sol}$ (e/Å <sup>3</sup> ), $B_{sol}$ (Å <sup>2</sup> )	0.32 , 31.9	EDS
L-test for twinning <sup>2</sup>	$\langle  L  \rangle = 0.49$ , $\langle L^2 \rangle = 0.32$	Xtriage
Estimated twinning fraction	No twinning to report.	Xtriage
$F_o, F_c$ correlation	0.93	EDS
Total number of atoms	5085	wwPDB-VP
Average B, all atoms (Å <sup>2</sup> )	68.0	wwPDB-VP

Xtriage's analysis on translational NCS is as follows: *The largest off-origin peak in the Patterson function is 3.52% of the height of the origin peak. No significant pseudotranslation is detected.*

<sup>1</sup>Intensities estimated from amplitudes.

<sup>2</sup>Theoretical values of  $\langle |L| \rangle$ ,  $\langle L^2 \rangle$  for acentric reflections are 0.5, 0.333 respectively for untwinned datasets, and 0.375, 0.2 for perfectly twinned datasets.

## 5 Model quality [i](#)

### 5.1 Standard geometry [i](#)

Bond lengths and bond angles in the following residue types are not validated in this section: MAN, NAG, CA

The Z score for a bond length (or angle) is the number of standard deviations the observed value is removed from the expected value. A bond length (or angle) with  $|Z| > 5$  is considered an outlier worth inspection. RMSZ is the root-mean-square of all Z scores of the bond lengths (or angles).

Mol	Chain	Bond lengths		Bond angles	
		RMSZ	$\# Z  > 5$	RMSZ	$\# Z  > 5$
1	A	0.57	0/4962	0.87	27/6755 (0.4%)

There are no bond length outliers.

The worst 5 of 27 bond angle outliers are listed below:

Mol	Chain	Res	Type	Atoms	Z	Observed(°)	Ideal(°)
1	A	696	ASP	CB-CG-OD2	6.86	124.47	118.30
1	A	866	ASP	CB-CG-OD2	6.72	124.35	118.30
1	A	738	ASP	CB-CG-OD2	6.51	124.16	118.30
1	A	797	ASP	CB-CG-OD2	5.89	123.60	118.30
1	A	718	ASP	CB-CG-OD2	5.88	123.59	118.30

There are no chirality outliers.

There are no planarity outliers.

### 5.2 Too-close contacts [i](#)

In the following table, the Non-H and H(model) columns list the number of non-hydrogen atoms and hydrogen atoms in the chain respectively. The H(added) column lists the number of hydrogen atoms added and optimized by MolProbity. The Clashes column lists the number of clashes within the asymmetric unit, whereas Symm-Clashes lists symmetry-related clashes.

Mol	Chain	Non-H	H(model)	H(added)	Clashes	Symm-Clashes
1	A	4844	0	4248	87	0
2	B	39	0	34	0	0
3	C	28	0	25	0	0
4	A	28	0	26	5	0
5	A	30	0	0	0	0
6	A	116	0	0	1	0

*Continued on next page...*

*Continued from previous page...*

Mol	Chain	Non-H	H(model)	H(added)	Clashes	Symm-Clashes
All	All	5085	0	4333	87	0

The all-atom clashscore is defined as the number of clashes found per 1000 atoms (including hydrogen atoms). The all-atom clashscore for this structure is 9.

The worst 5 of 87 close contacts within the same asymmetric unit are listed below, sorted by their clash magnitude.

Atom-1	Atom-2	Interatomic distance (Å)	Clash overlap (Å)
1:A:597:VAL:HB	1:A:598:PRO:CD	1.90	1.02
1:A:597:VAL:HB	1:A:598:PRO:HD3	1.03	0.99
1:A:597:VAL:CB	1:A:598:PRO:HD3	1.93	0.97
1:A:719:ASN:H	1:A:728:GLN:HE22	1.25	0.83
1:A:608:PRO:O	1:A:609:ARG:HB2	1.79	0.81

There are no symmetry-related clashes.

## 5.3 Torsion angles [i](#)

### 5.3.1 Protein backbone [i](#)

In the following table, the Percentiles column shows the percent Ramachandran outliers of the chain as a percentile score with respect to all X-ray entries followed by that with respect to entries of similar resolution.

The Analysed column shows the number of residues for which the backbone conformation was analysed, and the total number of residues.

Mol	Chain	Analysed	Favoured	Allowed	Outliers	Percentiles
1	A	619/634 (98%)	550 (89%)	57 (9%)	12 (2%)	<b>6</b> <b>13</b>

5 of 12 Ramachandran outliers are listed below:

Mol	Chain	Res	Type
1	A	597	VAL
1	A	598	PRO
1	A	609	ARG
1	A	716	ILE
1	A	584	ASN

### 5.3.2 Protein sidechains ⓘ

In the following table, the Percentiles column shows the percent sidechain outliers of the chain as a percentile score with respect to all X-ray entries followed by that with respect to entries of similar resolution.

The Analysed column shows the number of residues for which the sidechain conformation was analysed, and the total number of residues.

Mol	Chain	Analysed	Rotameric	Outliers	Percentiles
1	A	540/544 (99%)	483 (89%)	57 (11%)	5 11

5 of 57 residues with a non-rotameric sidechain are listed below:

Mol	Chain	Res	Type
1	A	811	GLU
1	A	1155	PHE
1	A	923	LEU
1	A	1149	ARG
1	A	1065	LEU

Sometimes sidechains can be flipped to improve hydrogen bonding and reduce clashes. 5 of 10 such sidechains are listed below:

Mol	Chain	Res	Type
1	A	990	GLN
1	A	1091	GLN
1	A	1113	HIS
1	A	834	HIS
1	A	842	HIS

### 5.3.3 RNA ⓘ

There are no RNA molecules in this entry.

## 5.4 Non-standard residues in protein, DNA, RNA chains ⓘ

There are no non-standard protein/DNA/RNA residues in this entry.

## 5.5 Carbohydrates ⓘ

5 monosaccharides are modelled in this entry.

In the following table, the Counts columns list the number of bonds (or angles) for which Mogul statistics could be retrieved, the number of bonds (or angles) that are observed in the model and the number of bonds (or angles) that are defined in the Chemical Component Dictionary. The Link column lists molecule types, if any, to which the group is linked. The Z score for a bond length (or angle) is the number of standard deviations the observed value is removed from the expected value. A bond length (or angle) with  $|Z| > 2$  is considered an outlier worth inspection. RMSZ is the root-mean-square of all Z scores of the bond lengths (or angles).

Mol	Type	Chain	Res	Link	Bond lengths			Bond angles		
					Counts	RMSZ	$\# Z  > 2$	Counts	RMSZ	$\# Z  > 2$
2	NAG	B	1	1,2	14,14,15	0.76	1 (7%)	17,19,21	1.29	1 (5%)
2	NAG	B	2	2	14,14,15	0.65	0	17,19,21	0.95	1 (5%)
2	MAN	B	3	2	11,11,12	0.63	0	15,15,17	1.83	3 (20%)
3	NAG	C	1	1,3	14,14,15	0.71	0	17,19,21	1.14	1 (5%)
3	NAG	C	2	3	14,14,15	0.50	0	17,19,21	0.70	0

In the following table, the Chirals column lists the number of chiral outliers, the number of chiral centers analysed, the number of these observed in the model and the number defined in the Chemical Component Dictionary. Similar counts are reported in the Torsion and Rings columns. '-' means no outliers of that kind were identified.

Mol	Type	Chain	Res	Link	Chirals	Torsions	Rings
2	NAG	B	1	1,2	-	4/6/23/26	0/1/1/1
2	NAG	B	2	2	-	4/6/23/26	0/1/1/1
2	MAN	B	3	2	1/1/4/5	0/2/19/22	0/1/1/1
3	NAG	C	1	1,3	-	4/6/23/26	0/1/1/1
3	NAG	C	2	3	-	4/6/23/26	0/1/1/1

All (1) bond length outliers are listed below:

Mol	Chain	Res	Type	Atoms	Z	Observed(Å)	Ideal(Å)
2	B	1	NAG	C1-C2	2.24	1.55	1.52

The worst 5 of 6 bond angle outliers are listed below:

Mol	Chain	Res	Type	Atoms	Z	Observed(°)	Ideal(°)
2	B	3	MAN	C1-O5-C5	5.16	119.10	112.19
2	B	1	NAG	C1-O5-C5	4.09	117.67	112.19
2	B	3	MAN	C1-C2-C3	4.05	115.54	109.64
3	C	1	NAG	C4-C3-C2	3.08	115.53	111.02
2	B	2	NAG	O5-C1-C2	-2.47	107.47	111.29

All (1) chirality outliers are listed below:

Mol	Chain	Res	Type	Atom
2	B	3	MAN	C1

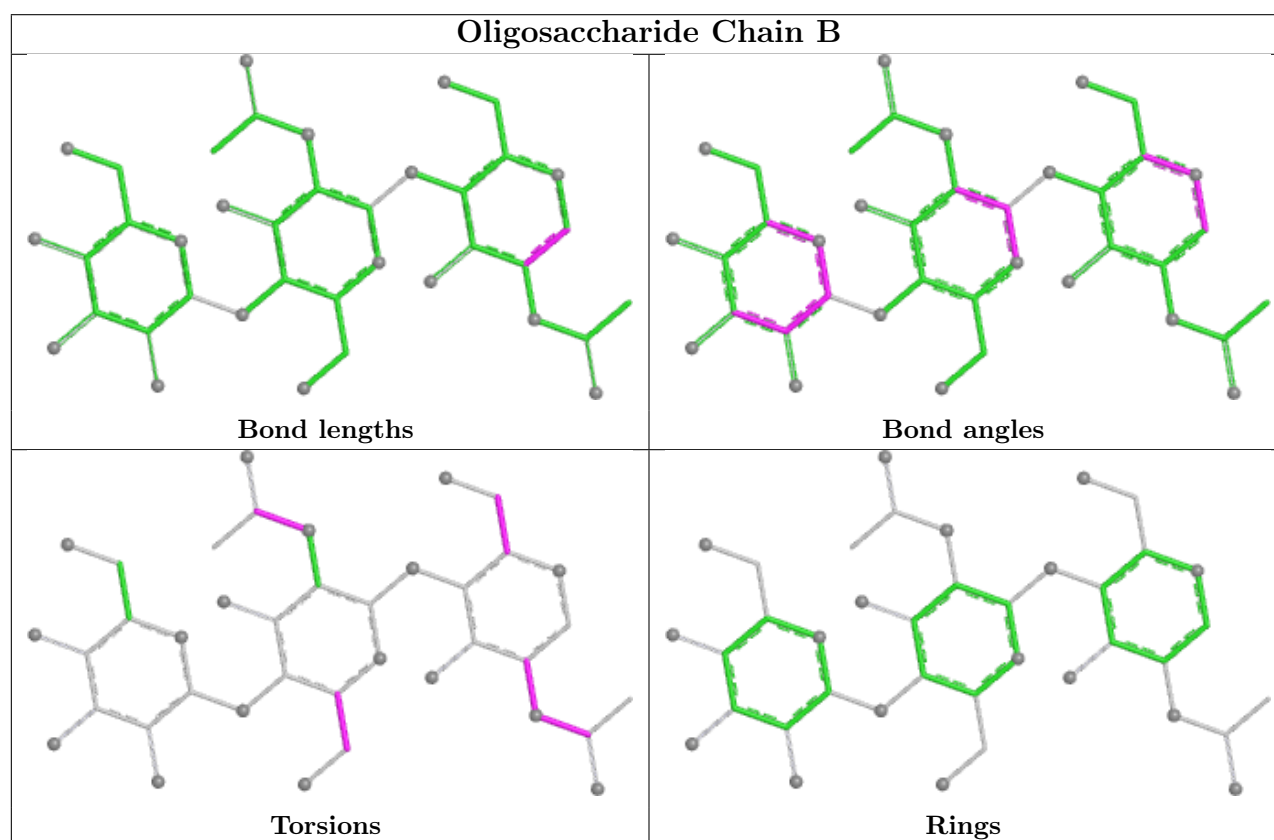
5 of 16 torsion outliers are listed below:

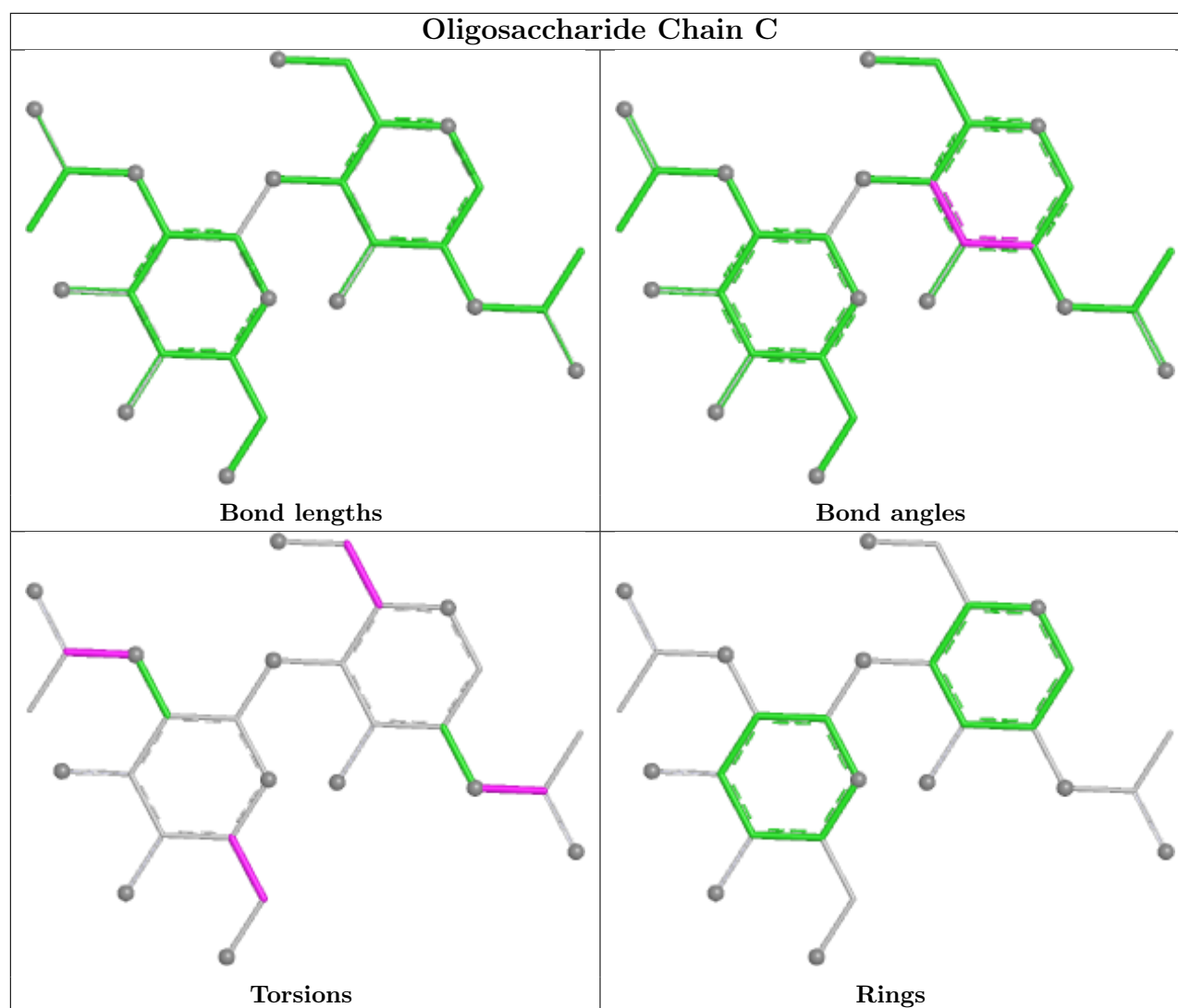
Mol	Chain	Res	Type	Atoms
2	B	1	NAG	C8-C7-N2-C2
2	B	1	NAG	O7-C7-N2-C2
2	B	2	NAG	C8-C7-N2-C2
2	B	2	NAG	O7-C7-N2-C2
3	C	1	NAG	C8-C7-N2-C2

There are no ring outliers.

No monomer is involved in short contacts.

The following is a two-dimensional graphical depiction of Mogul quality analysis of bond lengths, bond angles, torsion angles, and ring geometry for oligosaccharide.





## 5.6 Ligand geometry [i](#)

Of 32 ligands modelled in this entry, 30 are monoatomic - leaving 2 for Mogul analysis.

In the following table, the Counts columns list the number of bonds (or angles) for which Mogul statistics could be retrieved, the number of bonds (or angles) that are observed in the model and the number of bonds (or angles) that are defined in the Chemical Component Dictionary. The Link column lists molecule types, if any, to which the group is linked. The Z score for a bond length (or angle) is the number of standard deviations the observed value is removed from the expected value. A bond length (or angle) with  $|Z| > 2$  is considered an outlier worth inspection. RMSZ is the root-mean-square of all Z scores of the bond lengths (or angles).

Mol	Type	Chain	Res	Link	Bond lengths			Bond angles		
					Counts	RMSZ	$\# Z  > 2$	Counts	RMSZ	$\# Z  > 2$
4	NAG	A	6	1	14,14,15	0.67	0	17,19,21	0.96	0
4	NAG	A	7	1	14,14,15	0.61	0	17,19,21	1.21	2 (11%)

In the following table, the Chirals column lists the number of chiral outliers, the number of chiral centers analysed, the number of these observed in the model and the number defined in the Chemical Component Dictionary. Similar counts are reported in the Torsion and Rings columns. '-' means no outliers of that kind were identified.

Mol	Type	Chain	Res	Link	Chirals	Torsions	Rings
4	NAG	A	6	1	-	4/6/23/26	0/1/1/1
4	NAG	A	7	1	-	3/6/23/26	0/1/1/1

There are no bond length outliers.

All (2) bond angle outliers are listed below:

Mol	Chain	Res	Type	Atoms	Z	Observed(°)	Ideal(°)
4	A	7	NAG	C1-O5-C5	3.73	117.18	112.19
4	A	7	NAG	O5-C1-C2	-2.08	108.07	111.29

There are no chirality outliers.

5 of 7 torsion outliers are listed below:

Mol	Chain	Res	Type	Atoms
4	A	6	NAG	C8-C7-N2-C2
4	A	6	NAG	O7-C7-N2-C2
4	A	7	NAG	C8-C7-N2-C2
4	A	7	NAG	O7-C7-N2-C2
4	A	6	NAG	C4-C5-C6-O6

There are no ring outliers.

1 monomer is involved in 5 short contacts:

Mol	Chain	Res	Type	Clashes	Symm-Clashes
4	A	6	NAG	5	0

## 5.7 Other polymers [i](#)

There are no such residues in this entry.

## 5.8 Polymer linkage issues [i](#)

There are no chain breaks in this entry.



## 6 Fit of model and data [i](#)

### 6.1 Protein, DNA and RNA chains [i](#)

In the following table, the column labelled ‘#RSRZ > 2’ contains the number (and percentage) of RSRZ outliers, followed by percent RSRZ outliers for the chain as percentile scores relative to all X-ray entries and entries of similar resolution. The OWAB column contains the minimum, median, 95<sup>th</sup> percentile and maximum values of the occupancy-weighted average B-factor per residue. The column labelled ‘Q < 0.9’ lists the number of (and percentage) of residues with an average occupancy less than 0.9.

Mol	Chain	Analysed	<RSRZ>	#RSRZ>2	OWAB(Å <sup>2</sup> )	Q<0.9
1	A	616/634 (97%)	0.38	53 (8%) 18 15	40, 61, 122, 158	0

The worst 5 of 53 RSRZ outliers are listed below:

Mol	Chain	Res	Type	RSRZ
1	A	972	THR	6.2
1	A	582	LEU	5.6
1	A	579	VAL	5.4
1	A	581	PHE	4.9
1	A	585	GLY	4.7

### 6.2 Non-standard residues in protein, DNA, RNA chains [i](#)

There are no non-standard protein/DNA/RNA residues in this entry.

### 6.3 Carbohydrates [i](#)

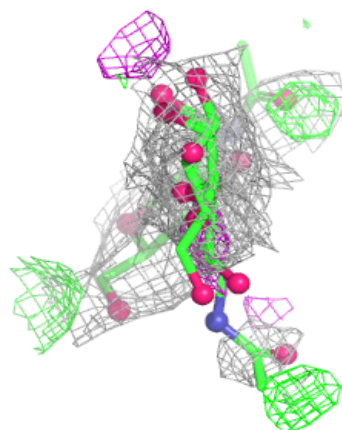
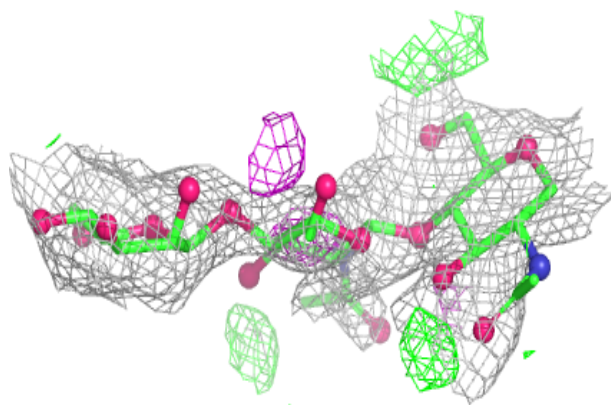
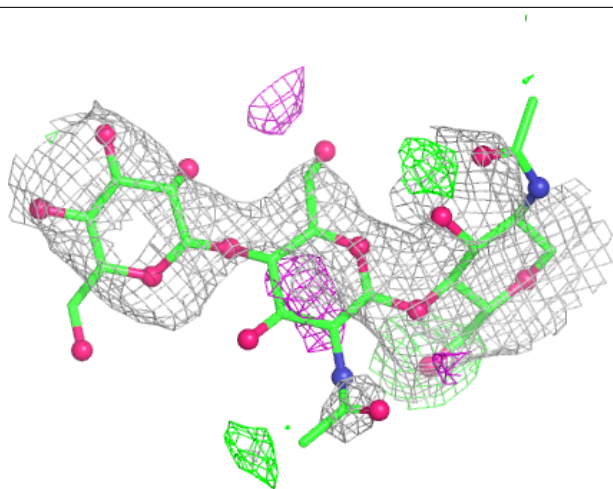
In the following table, the Atoms column lists the number of modelled atoms in the group and the number defined in the chemical component dictionary. The B-factors column lists the minimum, median, 95<sup>th</sup> percentile and maximum values of B factors of atoms in the group. The column labelled ‘Q < 0.9’ lists the number of atoms with occupancy less than 0.9.

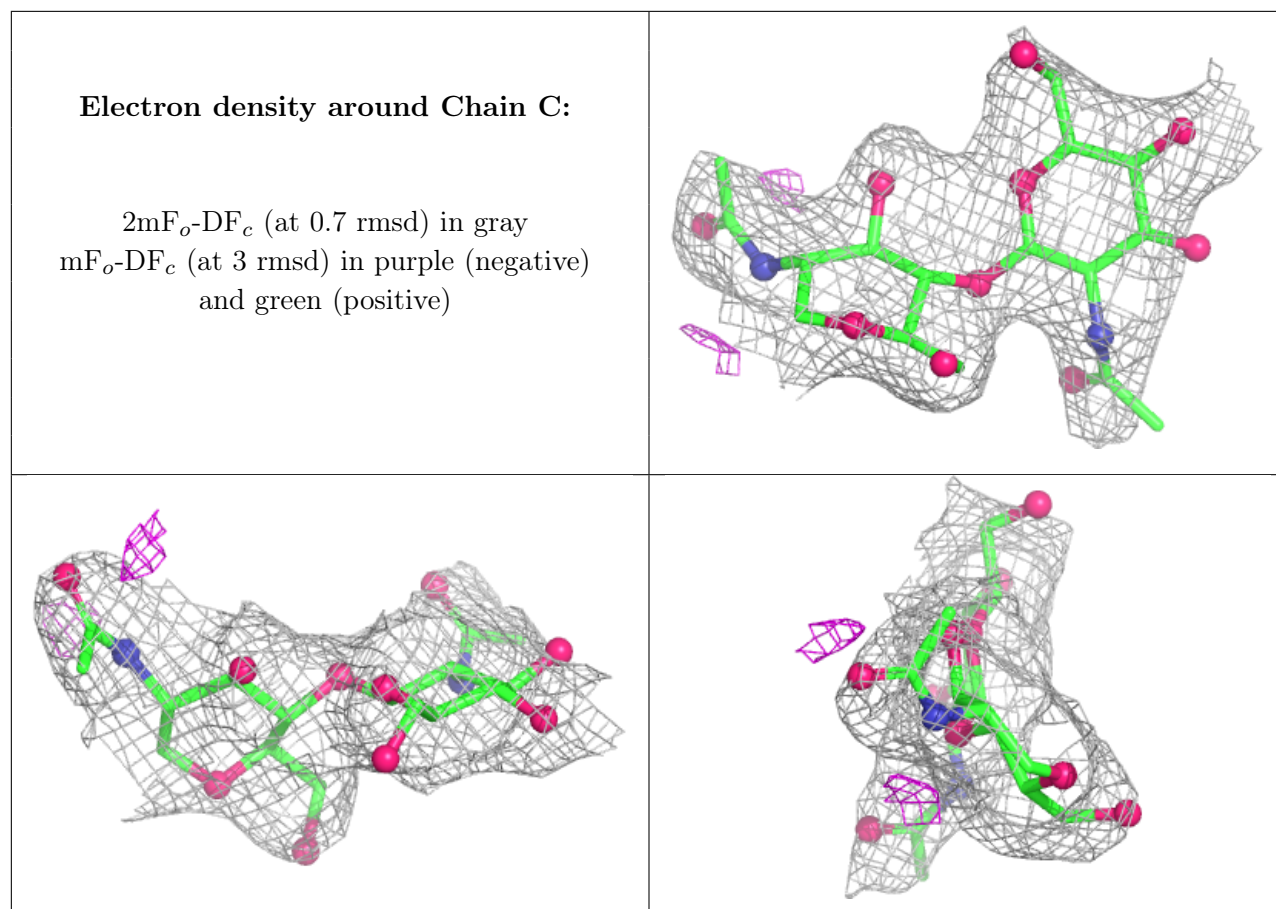
Mol	Type	Chain	Res	Atoms	RSCC	RSR	B-factors(Å <sup>2</sup> )	Q<0.9
2	NAG	B	2	14/15	0.45	0.21	123,127,131,132	0
2	NAG	B	1	14/15	0.51	0.22	114,119,121,122	0
2	MAN	B	3	11/12	0.54	0.17	133,136,137,138	0
3	NAG	C	2	14/15	0.72	0.12	115,123,126,127	0
3	NAG	C	1	14/15	0.84	0.13	80,89,98,107	0

The following is a graphical depiction of the model fit to experimental electron density for oligosaccharide. Each fit is shown from different orientation to approximate a three-dimensional view.

**Electron density around Chain B:**

$2mF_o-DF_c$  (at 0.7 rmsd) in gray  
 $mF_o-DF_c$  (at 3 rmsd) in purple (negative)  
and green (positive)





## 6.4 Ligands ⓘ

In the following table, the Atoms column lists the number of modelled atoms in the group and the number defined in the chemical component dictionary. The B-factors column lists the minimum, median, 95<sup>th</sup> percentile and maximum values of B factors of atoms in the group. The column labelled 'Q< 0.9' lists the number of atoms with occupancy less than 0.9.

Mol	Type	Chain	Res	Atoms	RSCC	RSR	B-factors(Å <sup>2</sup> )	Q<0.9
4	NAG	A	7	14/15	0.50	0.21	140,146,149,149	0
4	NAG	A	6	14/15	0.78	0.25	103,117,128,133	0
5	CA	A	1184	1/1	0.90	0.08	74,74,74,74	0
5	CA	A	1187	1/1	0.95	0.10	70,70,70,70	0
5	CA	A	1205	1/1	0.95	0.05	72,72,72,72	0
5	CA	A	1202	1/1	0.96	0.05	71,71,71,71	0
5	CA	A	1198	1/1	0.97	0.05	50,50,50,50	0
5	CA	A	1211	1/1	0.97	0.07	116,116,116,116	0
5	CA	A	1188	1/1	0.98	0.04	55,55,55,55	0
5	CA	A	1197	1/1	0.98	0.04	63,63,63,63	0
5	CA	A	1206	1/1	0.98	0.04	62,62,62,62	0
5	CA	A	1207	1/1	0.98	0.04	65,65,65,65	0
5	CA	A	1210	1/1	0.98	0.04	51,51,51,51	0

*Continued on next page...*

*Continued from previous page...*

Mol	Type	Chain	Res	Atoms	RSCC	RSR	B-factors( $\text{\AA}^2$ )	Q<0.9
5	CA	A	1185	1/1	0.98	0.04	57,57,57,57	0
5	CA	A	1194	1/1	0.99	0.06	55,55,55,55	0
5	CA	A	1195	1/1	0.99	0.08	53,53,53,53	0
5	CA	A	1196	1/1	0.99	0.02	52,52,52,52	0
5	CA	A	1186	1/1	0.99	0.04	58,58,58,58	0
5	CA	A	1182	1/1	0.99	0.03	46,46,46,46	0
5	CA	A	1199	1/1	0.99	0.02	59,59,59,59	0
5	CA	A	1200	1/1	0.99	0.02	62,62,62,62	0
5	CA	A	1201	1/1	0.99	0.02	70,70,70,70	0
5	CA	A	1183	1/1	0.99	0.04	50,50,50,50	0
5	CA	A	1203	1/1	0.99	0.05	81,81,81,81	0
5	CA	A	1204	1/1	0.99	0.03	70,70,70,70	0
5	CA	A	1189	1/1	0.99	0.04	61,61,61,61	0
5	CA	A	1190	1/1	0.99	0.03	63,63,63,63	0
5	CA	A	1191	1/1	0.99	0.03	53,53,53,53	0
5	CA	A	1208	1/1	0.99	0.03	58,58,58,58	0
5	CA	A	1192	1/1	0.99	0.05	55,55,55,55	0
5	CA	A	1193	1/1	0.99	0.03	57,57,57,57	0
5	CA	A	1209	1/1	1.00	0.02	45,45,45,45	0

## 6.5 Other polymers

There are no such residues in this entry.