



Full wwPDB X-ray Structure Validation Report ⓘ

Mar 18, 2025 – 06:54 PM EDT

PDB ID : 2YRR
Title : hypothetical alanine aminotransferase (TTH0173) from *Thermus thermophilus* HB8
Authors : Miyahara, I.; Matsumura, M.; Goto, M.; Omi, R.; Hirotsu, K.; RIKEN Structural Genomics/Proteomics Initiative (RSGI)
Deposited on : 2007-04-02
Resolution : 1.86 Å(reported)

This is a Full wwPDB X-ray Structure Validation Report for a publicly released PDB entry.

We welcome your comments at validation@mail.wwpdb.org

A user guide is available at

<https://www.wwpdb.org/validation/2017/XrayValidationReportHelp>

with specific help available everywhere you see the ⓘ symbol.

The types of validation reports are described at

<http://www.wwpdb.org/validation/2017/FAQs#types>.

The following versions of software and data (see [references ⓘ](#)) were used in the production of this report:

MolProbity	:	4.02b-467
Mogul	:	2022.3.0, CSD as543be (2022)
Xtriage (Phenix)	:	NOT EXECUTED
EDS	:	NOT EXECUTED
Percentile statistics	:	20231227.v01 (using entries in the PDB archive December 27th 2023)
Ideal geometry (proteins)	:	Engh & Huber (2001)
Ideal geometry (DNA, RNA)	:	Parkinson et al. (1996)
Validation Pipeline (wwPDB-VP)	:	2.41.4

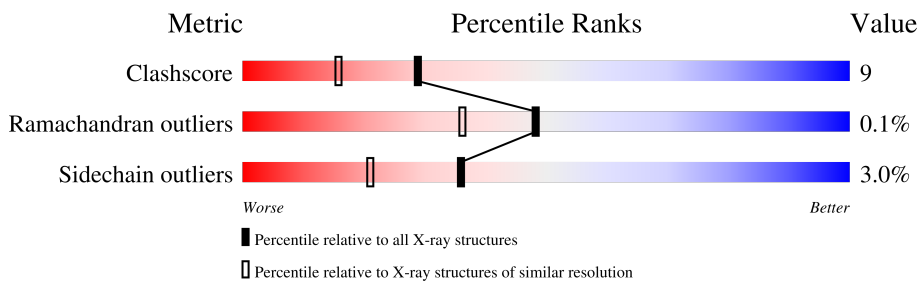
1 Overall quality at a glance

The following experimental techniques were used to determine the structure:

X-RAY DIFFRACTION

The reported resolution of this entry is 1.86 Å.

Percentile scores (ranging between 0-100) for global validation metrics of the entry are shown in the following graphic. The table shows the number of entries on which the scores are based.



Metric	Whole archive (#Entries)	Similar resolution (#Entries, resolution range(Å))
Clashscore	180529	3359 (1.86-1.86)
Ramachandran outliers	177936	3335 (1.86-1.86)
Sidechain outliers	177891	3335 (1.86-1.86)

The table below summarises the geometric issues observed across the polymeric chains and their fit to the electron density. The red, orange, yellow and green segments of the lower bar indicate the fraction of residues that contain outliers for ≥ 3 , 2, 1 and 0 types of geometric quality criteria respectively. A grey segment represents the fraction of residues that are not modelled. The numeric value for each fraction is indicated below the corresponding segment, with a dot representing fractions $\leq 5\%$.

Note EDS was not executed.

Mol	Chain	Length	Quality of chain
1	A	353	 82% 17%
1	B	353	 85% 14%

2 Entry composition [i](#)

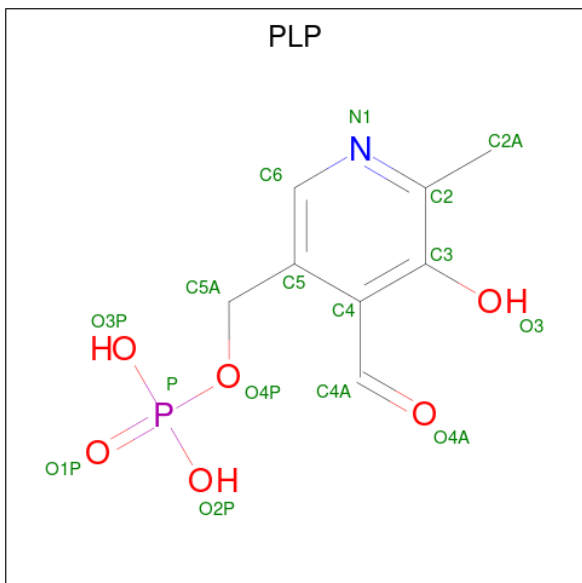
There are 3 unique types of molecules in this entry. The entry contains 5937 atoms, of which 0 are hydrogens and 0 are deuteriums.

In the tables below, the ZeroOcc column contains the number of atoms modelled with zero occupancy, the AltConf column contains the number of residues with at least one atom in alternate conformation and the Trace column contains the number of residues modelled with at most 2 atoms.

- Molecule 1 is a protein called Aminotransferase, class V.

Mol	Chain	Residues	Atoms					ZeroOcc	AltConf	Trace
1	A	352	Total	C	N	O	S	0	0	0
			2610	1666	466	468	10			
1	B	352	Total	C	N	O	S	0	0	0
			2595	1661	460	464	10			

- Molecule 2 is PYRIDOXAL-5'-PHOSPHATE (three-letter code: PLP) (formula: $C_8H_{10}NO_6P$).



Mol	Chain	Residues	Atoms					ZeroOcc	AltConf
2	A	1	Total	C	N	O	P	0	0
			15	8	1	5	1		
2	B	1	Total	C	N	O	P	0	0
			15	8	1	5	1		

- Molecule 3 is water.

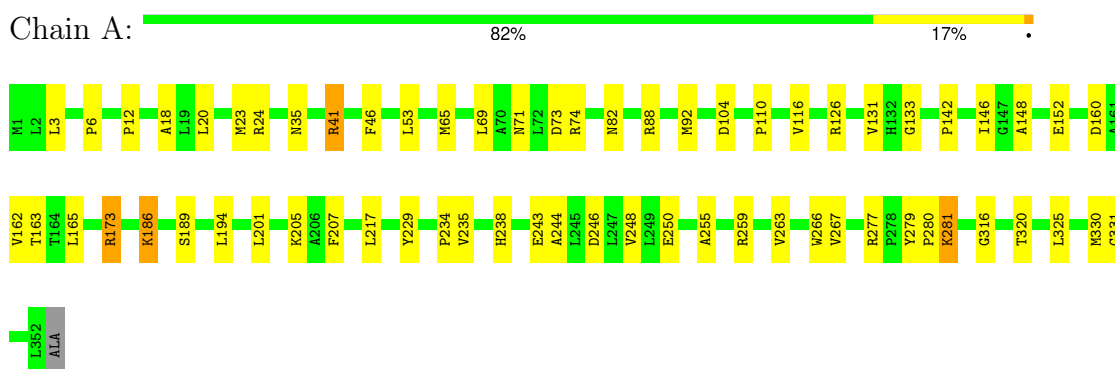
Mol	Chain	Residues	Atoms		ZeroOcc	AltConf
3	A	369	Total 369	O 369	0	0
3	B	333	Total 333	O 333	0	0

3 Residue-property plots

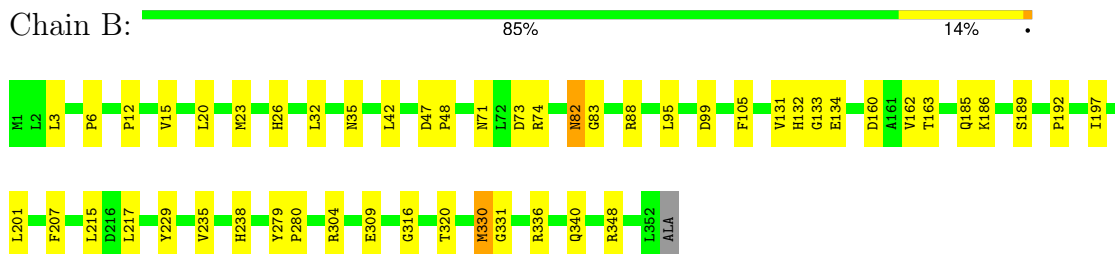
These plots are drawn for all protein, RNA, DNA and oligosaccharide chains in the entry. The first graphic for a chain summarises the proportions of the various outlier classes displayed in the second graphic. The second graphic shows the sequence view annotated by issues in geometry. Residues are color-coded according to the number of geometric quality criteria for which they contain at least one outlier: green = 0, yellow = 1, orange = 2 and red = 3 or more. Stretches of 2 or more consecutive residues without any outlier are shown as a green connector. Residues present in the sample, but not in the model, are shown in grey.

Note EDS was not executed.

- Molecule 1: Aminotransferase, class V



- Molecule 1: Aminotransferase, class V



4 Data and refinement statistics

Xtriage (Phenix) and EDS were not executed - this section is therefore incomplete.

Property	Value	Source
Space group	P 31 2 1	Depositor
Cell constants a, b, c, α , β , γ	80.92Å 80.92Å 203.96Å 90.00° 90.00° 120.00°	Depositor
Resolution (Å)	10.00 – 1.86	Depositor
% Data completeness (in resolution range)	(Not available) (10.00-1.86)	Depositor
R_{merge}	0.05	Depositor
R_{sym}	(Not available)	Depositor
Refinement program	CNS 1.1	Depositor
R, R_{free}	0.191 , (Not available)	Depositor
Estimated twinning fraction	No twinning to report.	Xtriage
Total number of atoms	5937	wwPDB-VP
Average B, all atoms (Å ²)	21.0	wwPDB-VP

5 Model quality

5.1 Standard geometry

Bond lengths and bond angles in the following residue types are not validated in this section: PLP

The Z score for a bond length (or angle) is the number of standard deviations the observed value is removed from the expected value. A bond length (or angle) with $|Z| > 5$ is considered an outlier worth inspection. RMSZ is the root-mean-square of all Z scores of the bond lengths (or angles).

Mol	Chain	Bond lengths		Bond angles	
		RMSZ	$\# Z > 5$	RMSZ	$\# Z > 5$
1	A	0.32	0/2667	0.60	0/3632
1	B	0.30	0/2652	0.59	0/3617
All	All	0.31	0/5319	0.59	0/7249

There are no bond length outliers.

There are no bond angle outliers.

There are no chirality outliers.

There are no planarity outliers.

5.2 Too-close contacts

In the following table, the Non-H and H(model) columns list the number of non-hydrogen atoms and hydrogen atoms in the chain respectively. The H(added) column lists the number of hydrogen atoms added and optimized by MolProbity. The Clashes column lists the number of clashes within the asymmetric unit, whereas Symm-Clashes lists symmetry-related clashes.

Mol	Chain	Non-H	H(model)	H(added)	Clashes	Symm-Clashes
1	A	2610	0	2627	56	0
1	B	2595	0	2610	38	0
2	A	15	0	7	1	0
2	B	15	0	7	1	0
3	A	369	0	0	5	0
3	B	333	0	0	2	0
All	All	5937	0	5251	90	0

The all-atom clashscore is defined as the number of clashes found per 1000 atoms (including hydrogen atoms). The all-atom clashscore for this structure is 9.

All (90) close contacts within the same asymmetric unit are listed below, sorted by their clash

magnitude.

Atom-1	Atom-2	Interatomic distance (Å)	Clash overlap (Å)
1:A:65:MET:HG2	1:A:92:MET:HE1	1.29	1.12
1:B:162:VAL:HG13	1:B:186:LYS:HG3	1.36	1.07
1:A:162:VAL:HG13	1:A:186:LYS:HG3	1.35	1.05
1:A:20:LEU:HD11	1:B:20:LEU:HD11	1.42	1.02
1:A:23:MET:HE2	1:A:24:ARG:H	1.34	0.93
1:A:69:LEU:HD12	1:A:92:MET:HE3	1.49	0.93
1:A:23:MET:HE2	1:A:24:ARG:N	1.94	0.82
1:A:246:ASP:O	1:A:250:GLU:HG3	1.86	0.76
1:A:65:MET:CG	1:A:92:MET:HE1	2.12	0.74
1:A:173:ARG:HH11	1:A:173:ARG:HG3	1.53	0.74
1:B:26:HIS:HE2	1:B:229:TYR:HD1	1.36	0.74
1:A:23:MET:CE	1:A:24:ARG:H	2.02	0.72
1:B:309:GLU:OE1	1:B:348:ARG:NH1	2.23	0.70
1:B:71:ASN:HD21	1:B:217:LEU:H	1.39	0.70
1:A:162:VAL:CG1	1:A:186:LYS:HG3	2.18	0.70
1:A:277:ARG:HH11	1:A:277:ARG:HG2	1.54	0.69
1:A:186:LYS:HE2	3:B:4489:HOH:O	1.94	0.67
1:B:162:VAL:CG1	1:B:186:LYS:HG3	2.21	0.66
1:A:71:ASN:HD21	1:A:217:LEU:H	1.45	0.65
1:A:173:ARG:HG3	1:A:173:ARG:NH1	2.11	0.63
1:A:6:PRO:HA	1:A:330:MET:CE	2.30	0.62
1:A:131:VAL:HA	1:A:160:ASP:HB3	1.83	0.61
1:A:23:MET:HE1	1:A:235:VAL:HB	1.81	0.61
1:B:71:ASN:ND2	1:B:217:LEU:H	2.00	0.60
1:A:35:ASN:OD1	1:A:238:HIS:HD2	1.84	0.59
1:A:126:ARG:HD2	3:A:4176:HOH:O	2.02	0.59
1:B:131:VAL:HA	1:B:160:ASP:HB3	1.84	0.59
1:B:35:ASN:OD1	1:B:238:HIS:HD2	1.86	0.57
1:A:23:MET:HE2	1:A:24:ARG:O	2.04	0.57
3:A:4675:HOH:O	1:B:95:LEU:HD12	2.04	0.57
1:A:277:ARG:HG2	1:A:277:ARG:NH1	2.14	0.56
1:B:185:GLN:NE2	1:B:186:LYS:HE3	2.20	0.56
1:A:263:VAL:O	1:A:267:VAL:HG23	2.06	0.56
1:A:281:LYS:N	1:A:281:LYS:HD2	2.19	0.56
1:A:6:PRO:CA	1:A:330:MET:HE1	2.36	0.56
1:A:148:ALA:O	1:A:152:GLU:HG3	2.06	0.55
1:B:83:GLY:HA3	1:B:134:GLU:HG2	1.87	0.55
1:A:82:ASN:HD21	1:A:110:PRO:HA	1.72	0.54
1:A:133:GLY:HA3	1:A:163:THR:OG1	2.08	0.54
1:B:82:ASN:ND2	3:B:4151:HOH:O	2.41	0.54
1:A:23:MET:CE	1:A:235:VAL:HB	2.39	0.53

Continued on next page...

Continued from previous page...

Atom-1	Atom-2	Interatomic distance (Å)	Clash overlap (Å)
1:A:71:ASN:ND2	1:A:217:LEU:H	2.06	0.52
1:A:88:ARG:HH22	1:B:229:TYR:HE2	1.56	0.52
1:A:41:ARG:NH1	3:A:4172:HOH:O	2.42	0.52
1:B:279:TYR:N	1:B:280:PRO:HD2	2.26	0.51
1:B:83:GLY:HA3	1:B:134:GLU:CG	2.41	0.51
1:B:6:PRO:C	1:B:330:MET:HE3	2.30	0.51
1:A:74:ARG:O	1:A:126:ARG:HG2	2.11	0.50
1:A:279:TYR:N	1:A:280:PRO:HD2	2.27	0.49
1:A:12:PRO:HB3	3:A:4458:HOH:O	2.12	0.49
1:B:336:ARG:O	1:B:340:GLN:HG3	2.12	0.49
1:A:69:LEU:HD12	1:A:92:MET:CE	2.32	0.49
1:B:133:GLY:HA3	1:B:163:THR:OG1	2.14	0.48
1:B:73:ASP:OD1	1:B:74:ARG:N	2.47	0.48
1:A:234:PRO:HA	1:B:192:PRO:HG2	1.96	0.48
1:B:316:GLY:HA3	1:B:320:THR:O	2.13	0.48
1:A:6:PRO:CA	1:A:330:MET:CE	2.92	0.47
1:A:229:TYR:HE2	1:B:88:ARG:HH22	1.54	0.47
1:B:12:PRO:HB2	1:B:15:VAL:HG23	1.97	0.47
1:A:194:LEU:HD21	1:A:234:PRO:HG2	1.97	0.47
1:B:83:GLY:HA3	1:B:134:GLU:CD	2.36	0.47
1:A:201:LEU:HG	1:A:205:LYS:HE3	1.96	0.46
1:A:255:ALA:O	1:A:259:ARG:HG3	2.15	0.46
1:A:41:ARG:NH1	1:A:246:ASP:OD1	2.49	0.46
1:B:197:ILE:C	1:B:197:ILE:HD12	2.36	0.45
1:A:73:ASP:OD1	1:A:74:ARG:N	2.50	0.45
1:A:316:GLY:HA3	1:A:320:THR:O	2.17	0.45
1:A:46:PHE:CE2	1:A:165:LEU:HD22	2.52	0.44
1:B:71:ASN:O	1:B:207:PHE:HA	2.17	0.44
1:A:6:PRO:CB	1:A:330:MET:HE1	2.47	0.44
1:A:23:MET:CE	1:A:24:ARG:O	2.66	0.43
1:A:18:ALA:HB2	1:A:243:GLU:HG3	2.00	0.42
1:B:82:ASN:HB3	1:B:105:PHE:HB2	2.01	0.42
1:B:279:TYR:H	1:B:280:PRO:HD2	1.82	0.42
1:A:142:PRO:O	1:A:146:ILE:HG12	2.19	0.42
1:B:162:VAL:HG11	1:B:186:LYS:NZ	2.34	0.42
1:B:47:ASP:N	1:B:48:PRO:CD	2.82	0.41
1:A:160:ASP:OD2	2:A:500:PLP:N1	2.53	0.41
1:B:189:SER:OG	1:B:331:GLY:HA3	2.20	0.41
1:B:23:MET:HE1	1:B:235:VAL:HB	2.01	0.41
1:B:82:ASN:HD22	1:B:82:ASN:N	2.19	0.41
1:A:244:ALA:O	1:A:248:VAL:HG23	2.21	0.41

Continued on next page...

Continued from previous page...

Atom-1	Atom-2	Interatomic distance (Å)	Clash overlap (Å)
1:A:53:LEU:HA	3:A:4389:HOH:O	2.21	0.41
1:A:71:ASN:O	1:A:207:PHE:HA	2.21	0.41
1:A:189:SER:OG	1:A:331:GLY:HA3	2.21	0.41
1:B:42:LEU:HD23	1:B:42:LEU:HA	1.94	0.41
1:A:116:VAL:HG21	1:A:146:ILE:HD12	2.02	0.40
1:B:6:PRO:CA	1:B:330:MET:HE3	2.51	0.40
1:B:162:VAL:HG11	2:B:500:PLP:C3	2.51	0.40
1:B:304:ARG:HE	1:B:304:ARG:HB3	1.67	0.40

There are no symmetry-related clashes.

5.3 Torsion angles [i](#)

5.3.1 Protein backbone [i](#)

In the following table, the Percentiles column shows the percent Ramachandran outliers of the chain as a percentile score with respect to all X-ray entries followed by that with respect to entries of similar resolution.

The Analysed column shows the number of residues for which the backbone conformation was analysed, and the total number of residues.

Mol	Chain	Analysed	Favoured	Allowed	Outliers	Percentiles	
1	A	350/353 (99%)	343 (98%)	6 (2%)	1 (0%)	37	25
1	B	350/353 (99%)	340 (97%)	10 (3%)	0	100	100
All	All	700/706 (99%)	683 (98%)	16 (2%)	1 (0%)	48	36

All (1) Ramachandran outliers are listed below:

Mol	Chain	Res	Type
1	A	186	LYS

5.3.2 Protein sidechains [i](#)

In the following table, the Percentiles column shows the percent sidechain outliers of the chain as a percentile score with respect to all X-ray entries followed by that with respect to entries of similar resolution.

The Analysed column shows the number of residues for which the sidechain conformation was analysed, and the total number of residues.

Mol	Chain	Analysed	Rotameric	Outliers	Percentiles	
1	A	253/263 (96%)	246 (97%)	7 (3%)	38	24
1	B	250/263 (95%)	242 (97%)	8 (3%)	34	19
All	All	503/526 (96%)	488 (97%)	15 (3%)	36	21

All (15) residues with a non-rotameric sidechain are listed below:

Mol	Chain	Res	Type
1	A	3	LEU
1	A	41	ARG
1	A	104	ASP
1	A	173	ARG
1	A	266	TRP
1	A	281	LYS
1	A	325	LEU
1	B	3	LEU
1	B	32	LEU
1	B	82	ASN
1	B	99	ASP
1	B	132	HIS
1	B	201	LEU
1	B	215	LEU
1	B	330	MET

Sometimes sidechains can be flipped to improve hydrogen bonding and reduce clashes. All (10) such sidechains are listed below:

Mol	Chain	Res	Type
1	A	39	GLN
1	A	71	ASN
1	A	132	HIS
1	A	230	HIS
1	A	238	HIS
1	B	71	ASN
1	B	82	ASN
1	B	132	HIS
1	B	230	HIS
1	B	238	HIS

5.3.3 RNA ⓘ

There are no RNA molecules in this entry.

5.4 Non-standard residues in protein, DNA, RNA chains [i](#)

There are no non-standard protein/DNA/RNA residues in this entry.

5.5 Carbohydrates [i](#)

There are no oligosaccharides in this entry.

5.6 Ligand geometry [i](#)

2 ligands are modelled in this entry.

In the following table, the Counts columns list the number of bonds (or angles) for which Mogul statistics could be retrieved, the number of bonds (or angles) that are observed in the model and the number of bonds (or angles) that are defined in the Chemical Component Dictionary. The Link column lists molecule types, if any, to which the group is linked. The Z score for a bond length (or angle) is the number of standard deviations the observed value is removed from the expected value. A bond length (or angle) with $|Z| > 2$ is considered an outlier worth inspection. RMSZ is the root-mean-square of all Z scores of the bond lengths (or angles).

Mol	Type	Chain	Res	Link	Bond lengths			Bond angles		
					Counts	RMSZ	$\# Z > 2$	Counts	RMSZ	$\# Z > 2$
2	PLP	B	500	1	15,15,16	1.71	4 (26%)	21,22,23	1.81	6 (28%)
2	PLP	A	500	1	15,15,16	1.62	4 (26%)	21,22,23	2.68	9 (42%)

In the following table, the Chirals column lists the number of chiral outliers, the number of chiral centers analysed, the number of these observed in the model and the number defined in the Chemical Component Dictionary. Similar counts are reported in the Torsion and Rings columns. '-' means no outliers of that kind were identified.

Mol	Type	Chain	Res	Link	Chirals	Torsions	Rings
2	PLP	B	500	1	-	1/6/6/8	0/1/1/1
2	PLP	A	500	1	-	2/6/6/8	0/1/1/1

All (8) bond length outliers are listed below:

Mol	Chain	Res	Type	Atoms	Z	Observed(Å)	Ideal(Å)
2	B	500	PLP	C2A-C2	3.44	1.55	1.50
2	B	500	PLP	P-O1P	2.83	1.59	1.50
2	A	500	PLP	C2-N1	2.45	1.38	1.33
2	B	500	PLP	O4P-C5A	-2.39	1.36	1.44
2	A	500	PLP	P-O1P	2.33	1.57	1.50
2	A	500	PLP	P-O3P	-2.21	1.46	1.54

Continued on next page...

Continued from previous page...

Mol	Chain	Res	Type	Atoms	Z	Observed(Å)	Ideal(Å)
2	A	500	PLP	C2A-C2	2.15	1.53	1.50
2	B	500	PLP	P-O2P	-2.10	1.47	1.54

All (15) bond angle outliers are listed below:

Mol	Chain	Res	Type	Atoms	Z	Observed(°)	Ideal(°)
2	A	500	PLP	O4P-P-O1P	-6.77	88.14	106.44
2	A	500	PLP	O4P-C5A-C5	6.76	122.03	109.36
2	B	500	PLP	O4P-C5A-C5	3.33	115.60	109.36
2	A	500	PLP	O2P-P-O4P	3.29	115.26	106.67
2	B	500	PLP	O4P-P-O1P	3.26	115.24	106.44
2	A	500	PLP	O3P-P-O2P	3.18	119.74	107.80
2	B	500	PLP	O3P-P-O2P	3.11	119.45	107.80
2	A	500	PLP	C5A-C5-C6	-2.90	114.64	119.36
2	A	500	PLP	C4A-C4-C5	2.84	123.86	120.94
2	B	500	PLP	C4A-C4-C5	2.61	123.63	120.94
2	A	500	PLP	C6-C5-C4	2.36	120.03	118.10
2	B	500	PLP	C5A-C5-C6	-2.33	115.57	119.36
2	B	500	PLP	O2P-P-O4P	-2.23	100.86	106.67
2	A	500	PLP	C5-C6-N1	-2.14	120.36	123.83
2	A	500	PLP	C4A-C4-C3	-2.07	117.07	120.52

There are no chirality outliers.

All (3) torsion outliers are listed below:

Mol	Chain	Res	Type	Atoms
2	A	500	PLP	C4-C5-C5A-O4P
2	A	500	PLP	C6-C5-C5A-O4P
2	B	500	PLP	C5A-O4P-P-O2P

There are no ring outliers.

2 monomers are involved in 2 short contacts:

Mol	Chain	Res	Type	Clashes	Symm-Clashes
2	B	500	PLP	1	0
2	A	500	PLP	1	0

5.7 Other polymers

There are no such residues in this entry.

5.8 Polymer linkage issues ⓘ

There are no chain breaks in this entry.

6 Fit of model and data

6.1 Protein, DNA and RNA chains

EDS was not executed - this section is therefore empty.

6.2 Non-standard residues in protein, DNA, RNA chains

EDS was not executed - this section is therefore empty.

6.3 Carbohydrates

EDS was not executed - this section is therefore empty.

6.4 Ligands

EDS was not executed - this section is therefore empty.

6.5 Other polymers

EDS was not executed - this section is therefore empty.