



Full wwPDB X-ray Structure Validation Report ⓘ

Jun 26, 2024 – 10:29 AM EDT

PDB ID : 6YSY
Title : Skeletal Myosin bound to MPH-220, MgADP-VO4
Authors : Canon, L.; Kikuti, C.M.; Gyimesi, M.; Malnasi-Csizmadia, A.; Houdusse, A.
Deposited on : 2020-04-23
Resolution : 3.25 Å(reported)

This is a Full wwPDB X-ray Structure Validation Report for a publicly released PDB entry.

We welcome your comments at validation@mail.wwpdb.org

A user guide is available at

<https://www.wwpdb.org/validation/2017/XrayValidationReportHelp>

with specific help available everywhere you see the ⓘ symbol.

The types of validation reports are described at

<http://www.wwpdb.org/validation/2017/FAQs#types>.

The following versions of software and data (see [references ⓘ](#)) were used in the production of this report:

MolProbity : 4.02b-467
Mogul : 1.8.5 (274361), CSD as541be (2020)
Xtriage (Phenix) : 1.13
EDS : 2.37.1
buster-report : 1.1.7 (2018)
Percentile statistics : 20191225.v01 (using entries in the PDB archive December 25th 2019)
Refmac : 5.8.0158
CCP4 : 7.0.044 (Gargrove)
Ideal geometry (proteins) : Engh & Huber (2001)
Ideal geometry (DNA, RNA) : Parkinson et al. (1996)
Validation Pipeline (wwPDB-VP) : 2.37.1

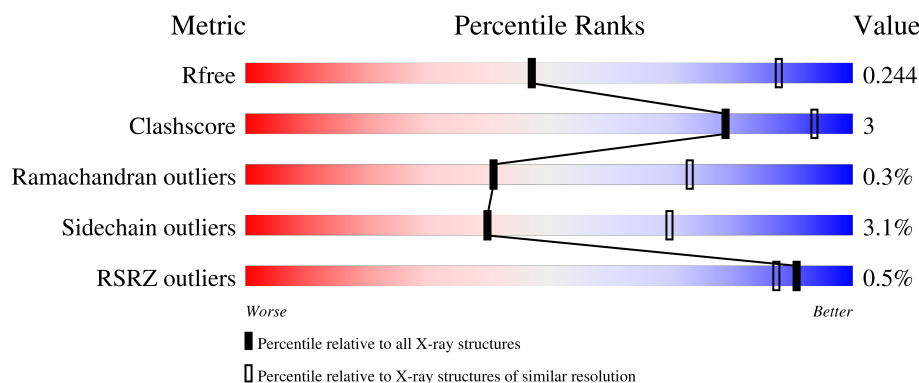
1 Overall quality at a glance

The following experimental techniques were used to determine the structure:

X-RAY DIFFRACTION



The reported resolution of this entry is 3.25 Å.

Percentile scores (ranging between 0-100) for global validation metrics of the entry are shown in the following graphic. The table shows the number of entries on which the scores are based.



Metric	Whole archive (#Entries)	Similar resolution (#Entries, resolution range(Å))
R_{free}	130704	1619 (3.28-3.20)
Clashscore	141614	1755 (3.28-3.20)
Ramachandran outliers	138981	1728 (3.28-3.20)
Sidechain outliers	138945	1727 (3.28-3.20)
RSRZ outliers	127900	1567 (3.28-3.20)

The table below summarises the geometric issues observed across the polymeric chains and their fit to the electron density. The red, orange, yellow and green segments of the lower bar indicate the fraction of residues that contain outliers for ≥ 3 , 2, 1 and 0 types of geometric quality criteria respectively. A grey segment represents the fraction of residues that are not modelled. The numeric value for each fraction is indicated below the corresponding segment, with a dot representing fractions $\leq 5\%$. The upper red bar (where present) indicates the fraction of residues that have poor fit to the electron density. The numeric value is given above the bar.

Mol	Chain	Length	Quality of chain
1	A	1938	
2	B	192	

2 Entry composition

There are 7 unique types of molecules in this entry. The entry contains 7474 atoms, of which 0 are hydrogens and 0 are deuteriums.

In the tables below, the ZeroOcc column contains the number of atoms modelled with zero occupancy, the AltConf column contains the number of residues with at least one atom in alternate conformation and the Trace column contains the number of residues modelled with at most 2 atoms.

- Molecule 1 is a protein called Myosin-4.

Mol	Chain	Residues	Atoms					ZeroOcc	AltConf	Trace
1	A	767	Total	C	N	O	S	0	1	0
			6169	3950	1034	1151	34			

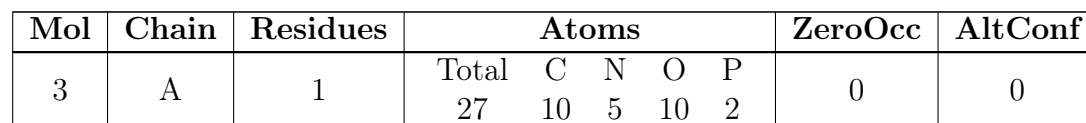
There are 7 discrepancies between the modelled and reference sequences:

Chain	Residue	Modelled	Actual	Comment	Reference
A	109	ARG	UNK	conflict	UNP Q28641
A	426	SER	ALA	conflict	UNP Q28641
A	512	THR	GLU	conflict	UNP Q28641
A	667	SER	THR	conflict	UNP Q28641
A	668	THR	HIS	conflict	UNP Q28641
A	669	HIS	SER	conflict	UNP Q28641
A	675	CYS	SER	conflict	UNP Q28641

- Molecule 2 is a protein called Myosin light chain 1/3, skeletal muscle isoform.

Mol	Chain	Residues	Atoms					ZeroOcc	AltConf	Trace
2	B	155	Total	C	N	O	S	0	0	0
			1213	757	201	248	7			

- Molecule 3 is ADENOSINE-5'-DIPHOSPHATE (three-letter code: ADP) (formula: $C_{10}H_{15}N_5O_{10}P_2$).



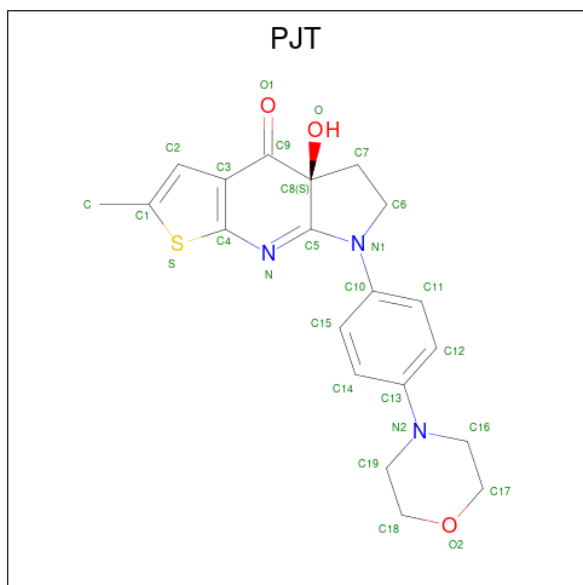
-

Mol	Chain	Residues	Atoms			ZeroOcc	AltConf
4	A	1	Total	O	V	0	0
			5	4	1		

- 

Mol	Chain	Residues	Atoms		ZeroOcc	AltConf
5	A	1	Total	Mg	0	0
			1	1		

- Molecule 6 is (9 {S})-5-methyl-12-(4-morpholin-4-ylphenyl)-9-oxidanyl-4-thia-2,12-diazatricyclo[7.3.0.0^{3,7}]dodeca-1,3(7),5-trien-8-one (three-letter code: PJT) (formula: C₂₀H₂₁N₃O₃S) (labeled as "Ligand of Interest" by depositor).



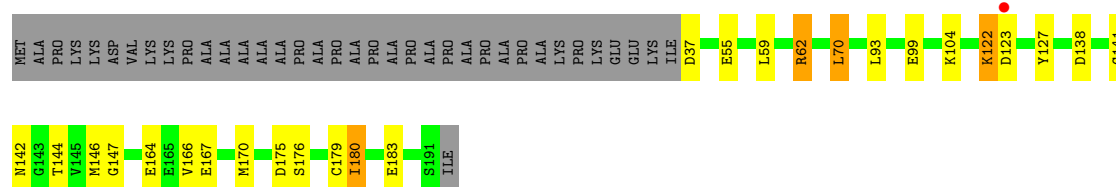
Mol	Chain	Residues	Atoms					ZeroOcc	AltConf
6	A	1	Total	C	N	O	S	0	0
			27	20	3	3	1		

- Molecule 7 is water.

Mol	Chain	Residues	Atoms		ZeroOcc	AltConf
7	A	29	Total	O	0	0
			29	29		
7	B	3	Total	O	0	0
			3	3		

[illegible]

- Molecule 2: Myosin light chain 1/3, skeletal muscle isoform



4 Data and refinement statistics

Property	Value	Source
Space group	P 21 21 21	Depositor
Cell constants a, b, c, α , β , γ	49.61Å 119.42Å 176.63Å 90.00° 90.00° 90.00°	Depositor
Resolution (Å)	98.93 – 3.25 98.93 – 3.25	Depositor EDS
% Data completeness (in resolution range)	99.9 (98.93-3.25) 99.9 (98.93-3.25)	Depositor EDS
R_{merge}	0.00	Depositor
R_{sym}	(Not available)	Depositor
$\langle I/\sigma(I) \rangle$ ¹	2.46 (at 3.26Å)	Xtriage
Refinement program	BUSTER 2.10.3 (6-FEB-2020)	Depositor
R, R_{free}	0.217 , 0.232 0.219 , 0.244	Depositor DCC
R_{free} test set	854 reflections (4.93%)	wwPDB-VP
Wilson B-factor (Å ²)	77.5	Xtriage
Anisotropy	1.191	Xtriage
Bulk solvent k_{sol} (e/Å ³), B_{sol} (Å ²)	0.32 , 68.8	EDS
L-test for twinning ²	$\langle L \rangle = 0.47$, $\langle L^2 \rangle = 0.30$	Xtriage
Estimated twinning fraction	No twinning to report.	Xtriage
F_o, F_c correlation	0.94	EDS
Total number of atoms	7474	wwPDB-VP
Average B, all atoms (Å ²)	100.0	wwPDB-VP

Xtriage's analysis on translational NCS is as follows: *The largest off-origin peak in the Patterson function is 5.12% of the height of the origin peak. No significant pseudotranslation is detected.*

¹Intensities estimated from amplitudes.

²Theoretical values of $\langle |L| \rangle$, $\langle L^2 \rangle$ for acentric reflections are 0.5, 0.333 respectively for untwinned datasets, and 0.375, 0.2 for perfectly twinned datasets.

5 Model quality

5.1 Standard geometry

Bond lengths and bond angles in the following residue types are not validated in this section: M3L, MG, VO4, PJT, ADP

The Z score for a bond length (or angle) is the number of standard deviations the observed value is removed from the expected value. A bond length (or angle) with $|Z| > 5$ is considered an outlier worth inspection. RMSZ is the root-mean-square of all Z scores of the bond lengths (or angles).

Mol	Chain	Bond lengths		Bond angles	
		RMSZ	$\# Z > 5$	RMSZ	$\# Z > 5$
1	A	0.40	0/6284	0.57	0/8473
2	B	0.43	0/1228	0.61	0/1647
All	All	0.40	0/7512	0.57	0/10120

There are no bond length outliers.

There are no bond angle outliers.

There are no chirality outliers.

There are no planarity outliers.

5.2 Too-close contacts

In the following table, the Non-H and H(model) columns list the number of non-hydrogen atoms and hydrogen atoms in the chain respectively. The H(added) column lists the number of hydrogen atoms added and optimized by MolProbity. The Clashes column lists the number of clashes within the asymmetric unit, whereas Symm-Clashes lists symmetry-related clashes.

Mol	Chain	Non-H	H(model)	H(added)	Clashes	Symm-Clashes
1	A	6169	0	6136	34	0
2	B	1213	0	1186	8	0
3	A	27	0	12	0	0
4	A	5	0	0	1	0
5	A	1	0	0	0	0
6	A	27	0	0	0	0
7	A	29	0	0	0	0
7	B	3	0	0	0	0
All	All	7474	0	7334	42	0

The all-atom clashscore is defined as the number of clashes found per 1000 atoms (including hydrogen atoms). The all-atom clashscore for this structure is 3.

All (42) close contacts within the same asymmetric unit are listed below, sorted by their clash magnitude.

Atom-1	Atom-2	Interatomic distance (Å)	Clash overlap (Å)
1:A:408:LYS:NZ	1:A:410:GLY:H	1.74	0.85
1:A:144:ARG:HD3	1:A:199:ILE:HD13	1.63	0.79
1:A:181:SER:HA	4:A:2002:VO4:O4	1.90	0.72
1:A:3:LYS:HZ3	1:A:18:ARG:HH11	1.41	0.68
1:A:407:VAL:HG22	1:A:416:LYS:HG3	1.76	0.66
1:A:408:LYS:HZ2	1:A:410:GLY:H	1.45	0.65
1:A:408:LYS:HZ1	1:A:410:GLY:H	1.47	0.63
1:A:739:ILE:HG13	1:A:743:LYS:HB3	1.86	0.57
1:A:408:LYS:NZ	1:A:410:GLY:N	2.51	0.57
2:B:70:LEU:HD22	2:B:104:LYS:HB2	1.85	0.56
1:A:310:PRO:HB2	1:A:321:ILE:HD12	1.88	0.55
1:A:98:HIS:CE1	1:A:101:ALA:HB2	2.42	0.54
2:B:147:GLY:HA2	2:B:180:ILE:HD11	1.88	0.54
1:A:3:LYS:NZ	1:A:18:ARG:HH11	2.06	0.51
1:A:3:LYS:HZ3	1:A:18:ARG:HD2	1.76	0.51
2:B:127:TYR:OH	2:B:183:GLU:HG3	2.10	0.50
1:A:3:LYS:HZ3	1:A:18:ARG:CD	2.24	0.49
1:A:408:LYS:HZ2	1:A:410:GLY:N	2.08	0.48
1:A:715:ARG:HG2	1:A:767:PHE:CE2	2.49	0.47
1:A:768:PHE:HD1	1:A:772:LEU:HD23	1.78	0.46
1:A:55:ARG:HG2	1:A:60:VAL:HG22	1.98	0.46
2:B:144:THR:CG2	2:B:179:CYS:HB3	2.45	0.46
1:A:336:ASP:OD1	1:A:349:ARG:NH2	2.48	0.46
2:B:166:VAL:O	2:B:170:MET:HG2	2.16	0.46
1:A:583:VAL:O	1:A:583:VAL:HG23	2.17	0.45
1:A:178:THR:HB	1:A:674:ARG:HA	1.98	0.44
1:A:87:LYS:HD3	1:A:114:MET:CE	2.48	0.44
1:A:187:VAL:O	1:A:191:ARG:HG2	2.18	0.44
1:A:487:LYS:HG3	1:A:658:LEU:HD21	2.00	0.43
2:B:70:LEU:HG	2:B:93:LEU:HD22	2.00	0.43
1:A:452:THR:OG1	1:A:454:GLN:HG2	2.17	0.43
1:A:3:LYS:HB2	1:A:6:ASP:HB2	2.00	0.43
1:A:725:TYR:O	1:A:748:LEU:HD21	2.19	0.42
1:A:272:GLU:HG3	1:A:477:GLU:HG2	2.01	0.42
1:A:798:PHE:O	1:A:802:VAL:HG13	2.20	0.42
1:A:173:GLN:OE1	1:A:669:HIS:HD2	2.03	0.41
2:B:59:LEU:O	2:B:62:ARG:NH1	2.51	0.41
1:A:231:GLU:O	1:A:235:ASN:HB2	2.21	0.41
1:A:583:VAL:O	1:A:583:VAL:CG2	2.69	0.41
1:A:178:THR:CB	1:A:674:ARG:HE	2.35	0.40

Continued on next page...

Continued from previous page...

Atom-1	Atom-2	Interatomic distance (Å)	Clash overlap (Å)
2:B:138:ASP:OD2	2:B:141:GLY:O	2.40	0.40
1:A:773:LEU:HD23	1:A:776:LEU:HD12	2.02	0.40

There are no symmetry-related clashes.

5.3 Torsion angles [i](#)

5.3.1 Protein backbone [i](#)

In the following table, the Percentiles column shows the percent Ramachandran outliers of the chain as a percentile score with respect to all X-ray entries followed by that with respect to entries of similar resolution.

The Analysed column shows the number of residues for which the backbone conformation was analysed, and the total number of residues.

Mol	Chain	Analysed	Favoured	Allowed	Outliers	Percentiles	
1	A	758/1938 (39%)	739 (98%)	19 (2%)	0	100	100
2	B	153/192 (80%)	141 (92%)	9 (6%)	3 (2%)	7	34
All	All	911/2130 (43%)	880 (97%)	28 (3%)	3 (0%)	41	73

All (3) Ramachandran outliers are listed below:

Mol	Chain	Res	Type
2	B	122	LYS
2	B	123	ASP
2	B	142	ASN

5.3.2 Protein sidechains [i](#)

In the following table, the Percentiles column shows the percent sidechain outliers of the chain as a percentile score with respect to all X-ray entries followed by that with respect to entries of similar resolution.

The Analysed column shows the number of residues for which the sidechain conformation was analysed, and the total number of residues.

Mol	Chain	Analysed	Rotameric	Outliers	Percentiles	
1	A	667/1693 (39%)	654 (98%)	13 (2%)	57	79

Continued on next page...

Continued from previous page...

Mol	Chain	Analysed	Rotameric	Outliers	Percentiles
2	B	132/156 (85%)	120 (91%)	12 (9%)	9 32
All	All	799/1849 (43%)	774 (97%)	25 (3%)	40 70

All (25) residues with a non-rotameric sidechain are listed below:

Mol	Chain	Res	Type
1	A	3	LYS
1	A	73	LYS
1	A	176	LEU
1	A	238	THR
1	A	246	ARG
1	A	458	TYR
1	A	568	LYS
1	A	602	ASP
1	A	715	ARG
1	A	722	LYS
1	A	739	ILE
1	A	741	SER
1	A	803	GLU
2	B	37	ASP
2	B	55	GLU
2	B	62	ARG
2	B	70	LEU
2	B	99	GLU
2	B	122	LYS
2	B	146	MET
2	B	164	GLU
2	B	167	GLU
2	B	175	ASP
2	B	176	SER
2	B	180	ILE

Sometimes sidechains can be flipped to improve hydrogen bonding and reduce clashes. All (3) such sidechains are listed below:

Mol	Chain	Res	Type
1	A	669	HIS
1	A	729	ASN
2	B	124	GLN

5.3.3 RNA ⓘ

There are no RNA molecules in this entry.

5.4 Non-standard residues in protein, DNA, RNA chains ⓘ

1 non-standard protein/DNA/RNA residue is modelled in this entry.

In the following table, the Counts columns list the number of bonds (or angles) for which Mogul statistics could be retrieved, the number of bonds (or angles) that are observed in the model and the number of bonds (or angles) that are defined in the Chemical Component Dictionary. The Link column lists molecule types, if any, to which the group is linked. The Z score for a bond length (or angle) is the number of standard deviations the observed value is removed from the expected value. A bond length (or angle) with $|Z| > 2$ is considered an outlier worth inspection. RMSZ is the root-mean-square of all Z scores of the bond lengths (or angles).

Mol	Type	Chain	Res	Link	Bond lengths			Bond angles		
					Counts	RMSZ	$\# Z > 2$	Counts	RMSZ	$\# Z > 2$
1	M3L	A	130	1	10,11,12	0.85	1 (10%)	9,14,16	0.34	0

In the following table, the Chirals column lists the number of chiral outliers, the number of chiral centers analysed, the number of these observed in the model and the number defined in the Chemical Component Dictionary. Similar counts are reported in the Torsion and Rings columns. '-' means no outliers of that kind were identified.

Mol	Type	Chain	Res	Link	Chirals	Torsions	Rings
1	M3L	A	130	1	-	1/9/10/12	-

All (1) bond length outliers are listed below:

Mol	Chain	Res	Type	Atoms	Z	Observed(Å)	Ideal(Å)
1	A	130	M3L	CB-CA	2.26	1.56	1.53

There are no bond angle outliers.

There are no chirality outliers.

All (1) torsion outliers are listed below:

Mol	Chain	Res	Type	Atoms
1	A	130	M3L	CA-CB-CG-CD

There are no ring outliers.

No monomer is involved in short contacts.

5.5 Carbohydrates [i](#)

There are no monosaccharides in this entry.

5.6 Ligand geometry [i](#)

Of 4 ligands modelled in this entry, 1 is monoatomic - leaving 3 for Mogul analysis.

In the following table, the Counts columns list the number of bonds (or angles) for which Mogul statistics could be retrieved, the number of bonds (or angles) that are observed in the model and the number of bonds (or angles) that are defined in the Chemical Component Dictionary. The Link column lists molecule types, if any, to which the group is linked. The Z score for a bond length (or angle) is the number of standard deviations the observed value is removed from the expected value. A bond length (or angle) with $|Z| > 2$ is considered an outlier worth inspection. RMSZ is the root-mean-square of all Z scores of the bond lengths (or angles).

Mol	Type	Chain	Res	Link	Bond lengths			Bond angles		
					Counts	RMSZ	# $ Z > 2$	Counts	RMSZ	# $ Z > 2$
3	ADP	A	2001	4,5	24,29,29	1.36	4 (16%)	29,45,45	1.38	3 (10%)
4	VO4	A	2002	5,3	1,4,4	2.61	1 (100%)	-		
6	PJT	A	2004	-	26,31,31	0.70	1 (3%)	26,47,47	0.50	0

In the following table, the Chirals column lists the number of chiral outliers, the number of chiral centers analysed, the number of these observed in the model and the number defined in the Chemical Component Dictionary. Similar counts are reported in the Torsion and Rings columns. '-' means no outliers of that kind were identified.

Mol	Type	Chain	Res	Link	Chirals	Torsions	Rings
3	ADP	A	2001	4,5	-	2/12/32/32	0/3/3/3
6	PJT	A	2004	-	-	0/8/46/46	0/4/5/5

All (6) bond length outliers are listed below:

Mol	Chain	Res	Type	Atoms	Z	Observed(Å)	Ideal(Å)
3	A	2001	ADP	PB-O2B	-3.67	1.40	1.54
4	A	2002	VO4	O1-V	2.61	1.78	1.63
3	A	2001	ADP	O4'-C1'	2.56	1.44	1.41
3	A	2001	ADP	C2-N3	2.44	1.36	1.32
6	A	2004	PJT	C5-N	2.39	1.32	1.29
3	A	2001	ADP	C5-C4	-2.05	1.35	1.40

All (3) bond angle outliers are listed below:

Mol	Chain	Res	Type	Atoms	Z	Observed(°)	Ideal(°)
3	A	2001	ADP	PA-O3A-PB	-4.26	118.21	132.83
3	A	2001	ADP	C4-C5-N7	4.05	113.62	109.40
3	A	2001	ADP	O3B-PB-O2B	2.19	116.02	107.64

There are no chirality outliers.

All (2) torsion outliers are listed below:

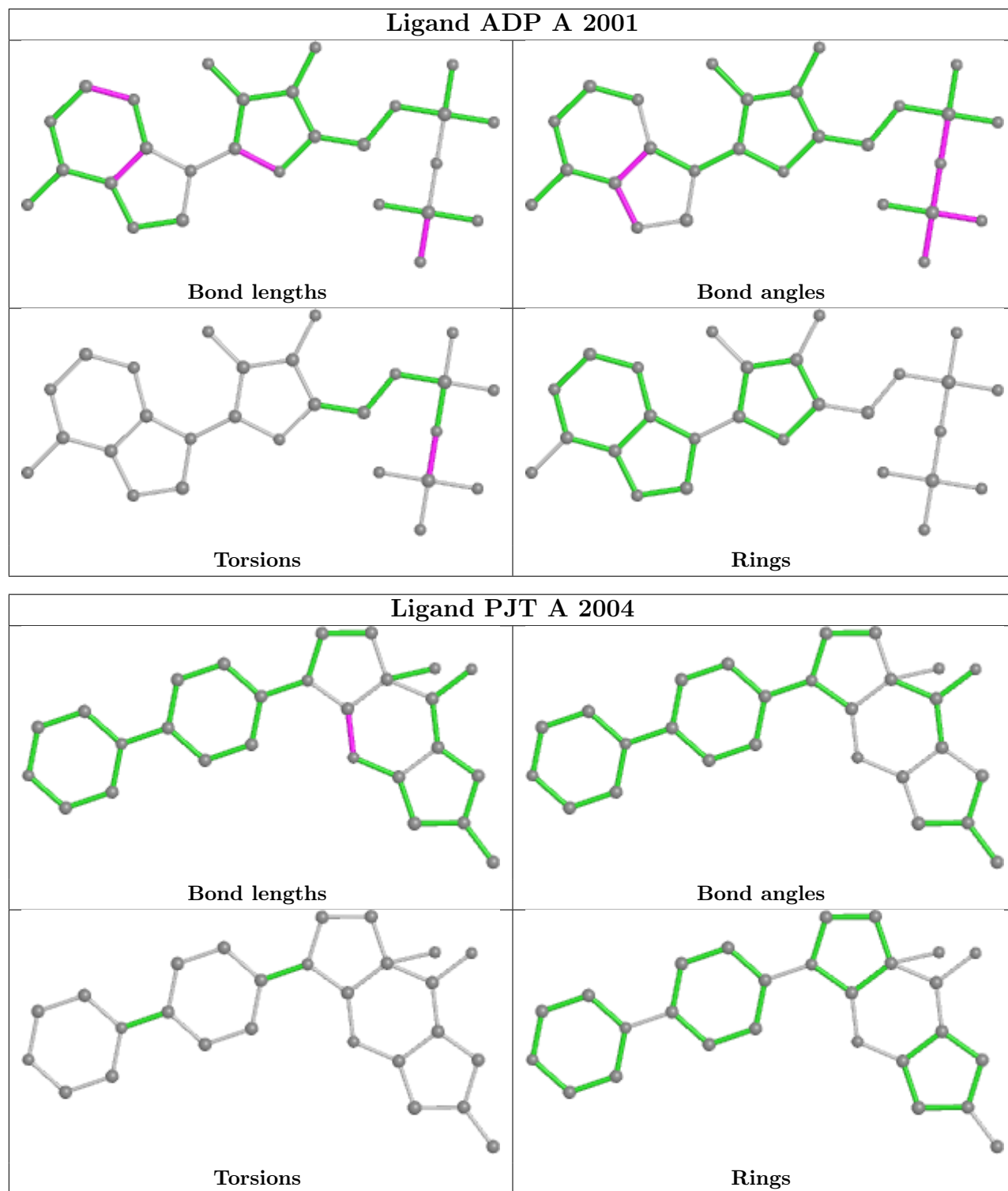
Mol	Chain	Res	Type	Atoms
3	A	2001	ADP	PA-O3A-PB-O2B
3	A	2001	ADP	PA-O3A-PB-O3B

There are no ring outliers.

1 monomer is involved in 1 short contact:

Mol	Chain	Res	Type	Clashes	Symm-Clashes
4	A	2002	VO4	1	0

The following is a two-dimensional graphical depiction of Mogul quality analysis of bond lengths, bond angles, torsion angles, and ring geometry for all instances of the Ligand of Interest. In addition, ligands with molecular weight > 250 and outliers as shown on the validation Tables will also be included. For torsion angles, if less than 5% of the Mogul distribution of torsion angles is within 10 degrees of the torsion angle in question, then that torsion angle is considered an outlier. Any bond that is central to one or more torsion angles identified as an outlier by Mogul will be highlighted in the graph. For rings, the root-mean-square deviation (RMSD) between the ring in question and similar rings identified by Mogul is calculated over all ring torsion angles. If the average RMSD is greater than 60 degrees and the minimal RMSD between the ring in question and any Mogul-identified rings is also greater than 60 degrees, then that ring is considered an outlier. The outliers are highlighted in purple. The color gray indicates Mogul did not find sufficient equivalents in the CSD to analyse the geometry.



5.7 Other polymers ⓘ

There are no such residues in this entry.

5.8 Polymer linkage issues ⓘ

There are no chain breaks in this entry.

6 Fit of model and data [i](#)

6.1 Protein, DNA and RNA chains [i](#)

In the following table, the column labelled ‘#RSRZ > 2’ contains the number (and percentage) of RSRZ outliers, followed by percent RSRZ outliers for the chain as percentile scores relative to all X-ray entries and entries of similar resolution. The OWAB column contains the minimum, median, 95th percentile and maximum values of the occupancy-weighted average B-factor per residue. The column labelled ‘Q < 0.9’ lists the number of (and percentage) of residues with an average occupancy less than 0.9.

Mol	Chain	Analysed	<RSRZ>	#RSRZ>2	OWAB(Å ²)	Q<0.9
1	A	765/1938 (39%)	0.14	4 (0%) 91 87	62, 98, 142, 175	0
2	B	155/192 (80%)	-0.07	1 (0%) 89 85	61, 94, 130, 137	0
All	All	920/2130 (43%)	0.10	5 (0%) 91 87	61, 98, 137, 175	0

All (5) RSRZ outliers are listed below:

Mol	Chain	Res	Type	RSRZ
2	B	123	ASP	2.5
1	A	367	PHE	2.5
1	A	555	LEU	2.4
1	A	551	PHE	2.1
1	A	233	PHE	2.1

6.2 Non-standard residues in protein, DNA, RNA chains [i](#)

In the following table, the Atoms column lists the number of modelled atoms in the group and the number defined in the chemical component dictionary. The B-factors column lists the minimum, median, 95th percentile and maximum values of B factors of atoms in the group. The column labelled ‘Q < 0.9’ lists the number of atoms with occupancy less than 0.9.

Mol	Type	Chain	Res	Atoms	RSCC	RSR	B-factors(Å ²)	Q<0.9
1	M3L	A	130	12/13	0.92	0.26	91,92,94,94	0

6.3 Carbohydrates [i](#)

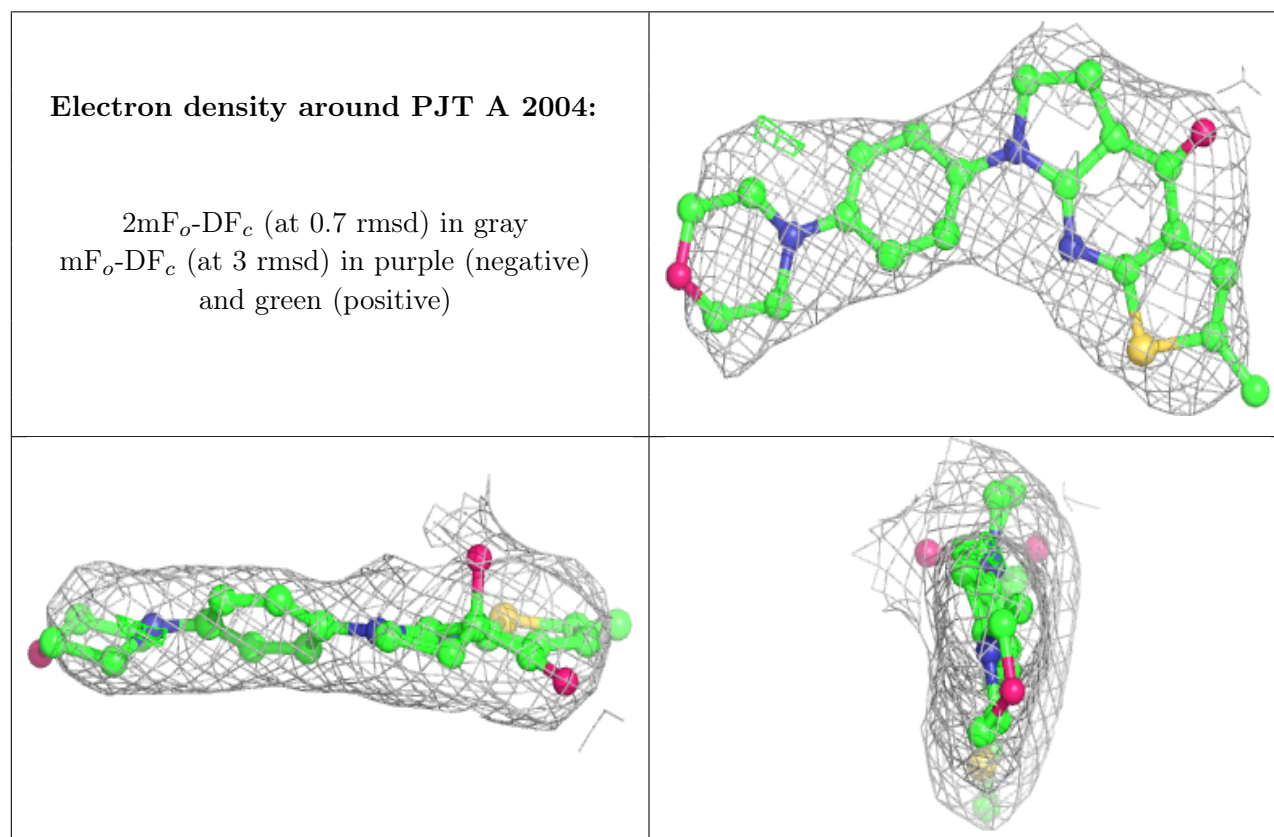
There are no monosaccharides in this entry.

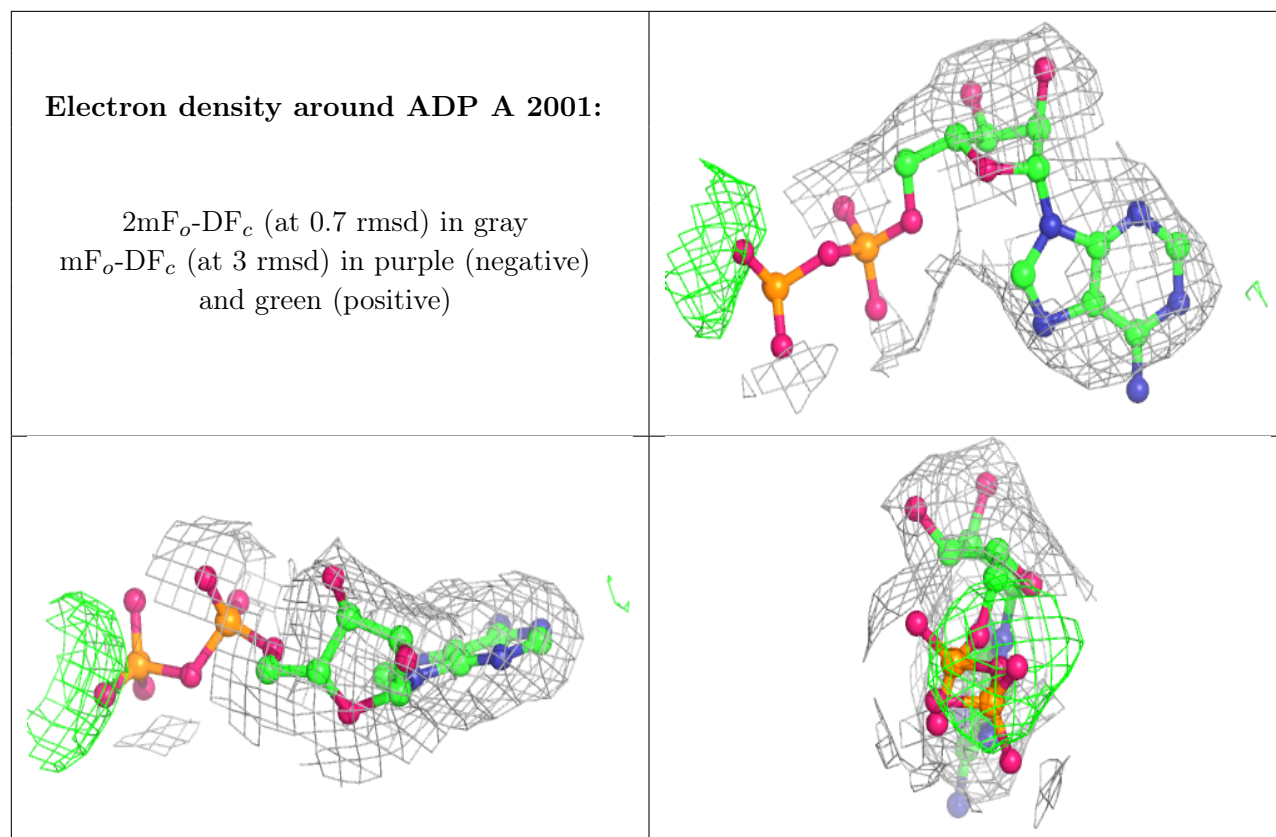
6.4 Ligands [i](#)

In the following table, the Atoms column lists the number of modelled atoms in the group and the number defined in the chemical component dictionary. The B-factors column lists the minimum, median, 95th percentile and maximum values of B factors of atoms in the group. The column labelled 'Q< 0.9' lists the number of atoms with occupancy less than 0.9.

Mol	Type	Chain	Res	Atoms	RSCC	RSR	B-factors(\AA^2)	Q<0.9
5	MG	A	2003	1/1	0.92	0.09	52,52,52,52	0
6	PJT	A	2004	27/27	0.93	0.29	95,98,105,105	0
3	ADP	A	2001	27/27	0.94	0.18	70,86,89,89	0
4	VO4	A	2002	5/5	0.97	0.22	87,90,90,91	0

The following is a graphical depiction of the model fit to experimental electron density of all instances of the Ligand of Interest. In addition, ligands with molecular weight > 250 and outliers as shown on the geometry validation Tables will also be included. Each fit is shown from different orientation to approximate a three-dimensional view.





6.5 Other polymers [i](#)

There are no such residues in this entry.